


| | | | | | |
|---------|--------------|---------|-----|---|----------------|
| Outil | La Feignasse | | |  | |
| Date | 01/02/2024 | Version | 1.3 | | page n° 1 / 25 |
| Feuille | Préambule | | | | |



Avant de commencer

La présente version est le résultat des évolutions par l'usage, d'expérimentations paysannes quotidiennes, des ajustements pratiques issus des retours des participants aux nombreuses formations et journées de terrain collectives.


L'autoconstruction de votre outil à l'aide de ce tutoriel n'est que le début de votre aventure. Si cette machine est pertinente en l'état pour de nombreux contextes, vous allez devoir l'adapter, la régler, la modifier pour l'ajuster à votre projet agronomique, vos itinéraires techniques, vos conditions pédo-climatiques. Vous allez donc faire vivre cette machine.

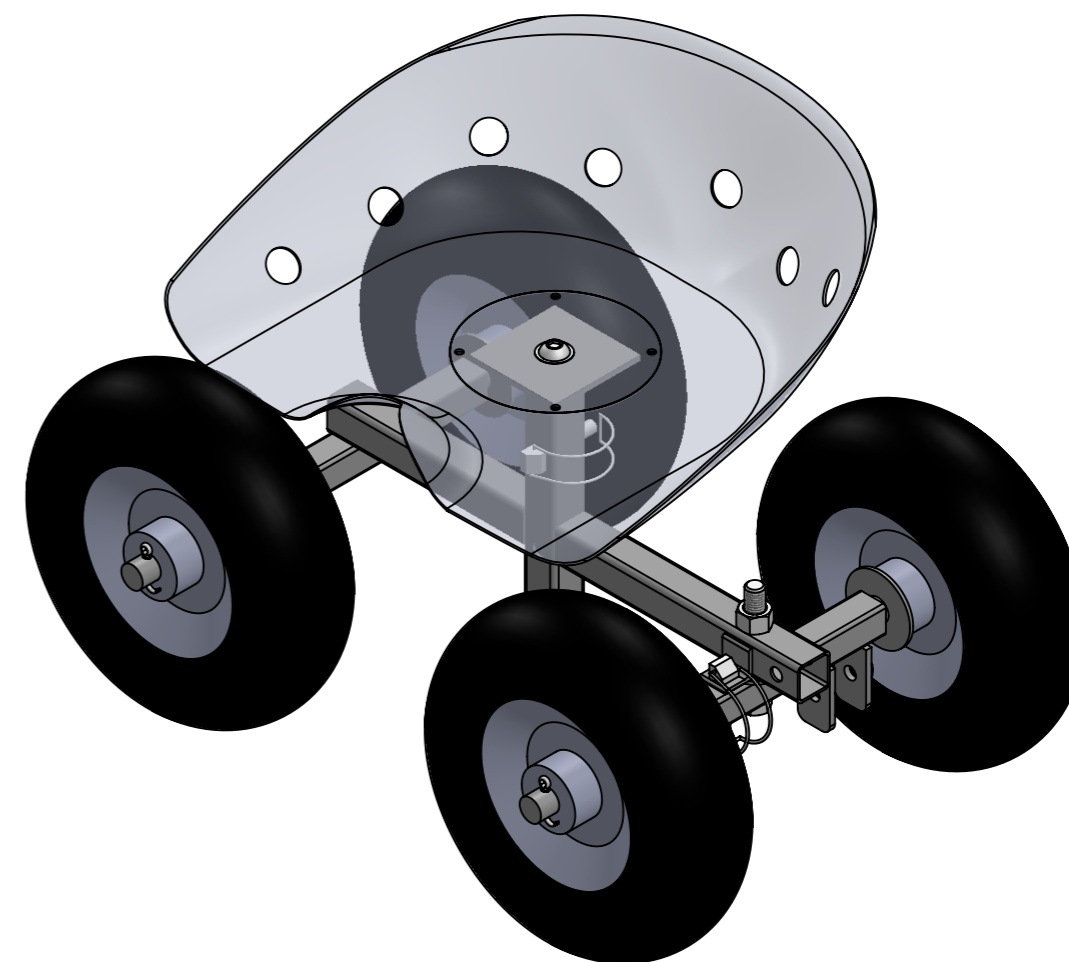
Félicitations, vous êtes en passe de devenir constructeur d'outils et machines agricoles homologué CE! Renseignez-vous sur vos responsabilités légales sur notre site: des outils paysans\techniques et réglementations.
(<https://www.latelierpaysan.org/Techniques-et-reglementations>)

Merci de nous faire parvenir vos retours, vos découvertes, vos réussites.
Vos expériences individuelles, vos tâtonnements de terrain viendront enrichir le pot commun paysan, sous même licence libre que les présents plans.


<http://www.latelierpaysan.org/>

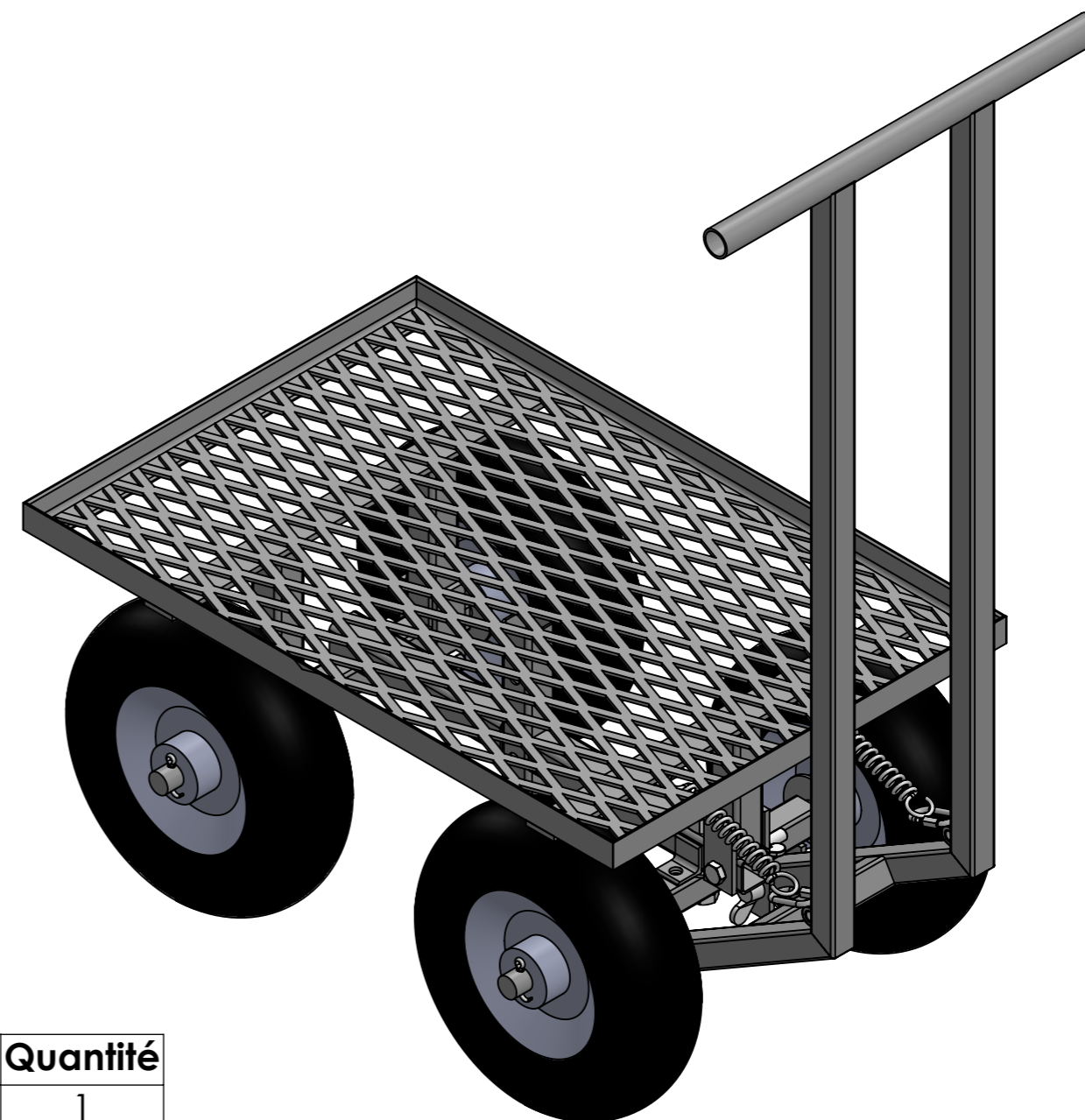
<http://forum.latelierpaysan.org>

| | | | | | |
|---------|------------------------------|---------|-----|---|----------------|
| Outil | La Feignasse | | |  | |
| Date | 01/02/2024 | Version | 1.3 | | page n° 2 / 25 |
| Feuille | Nomenclature générale- Siège | | | | |



| Repère | Désignation | Quantité |
|--------------------------|-----------------------------------|----------|
| A | Chassis roues fixes | 1 |
| B | Chassis roues mobiles | 1 |
| C | Support de siège | 1 |
| Ecrou | Ecrou M14 Zingué | 1 |
| Goupille clips demi lune | Goupille clips demi lune Ø10 x 50 | 2 |
| Goupille fendue | Goupille fendue 5 x 30 | 4 |
| Rondelle | Rondelle Ø14 série LLU | 1 |
| Vis BHC | Vis BHC avec embase M12 x 30 10.9 | 1 |
| Vis Hexagonale | Vis hexagonale M14 x 90 PF | 1 |
| Roue gonflable | Roue gonflable Ø260 ; L85 | 4 |
| siège_cuvette | Siège cuvette | 1 |

| | | | | | |
|---------|--------------------------------|---------|-----|---|----------------|
| Outil | La Feignasse | | |  | |
| Date | 01/02/2024 | Version | 1.3 | | page n° 3 / 25 |
| Feuille | Nomenclature générale- Chariot | | | | |

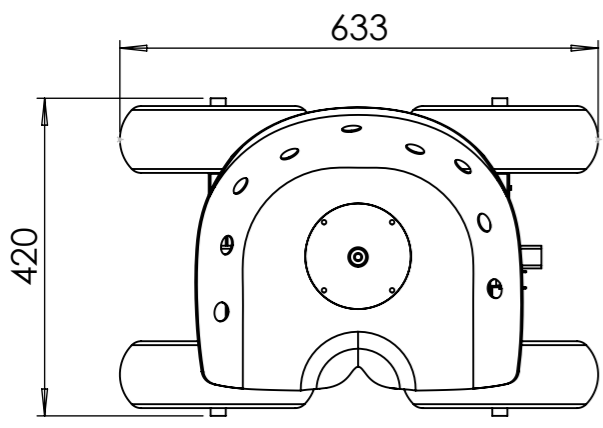
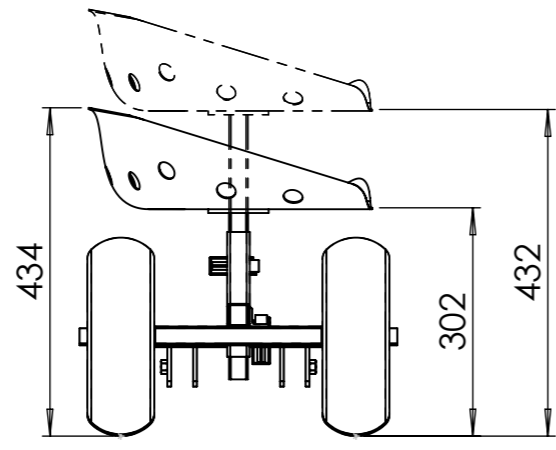
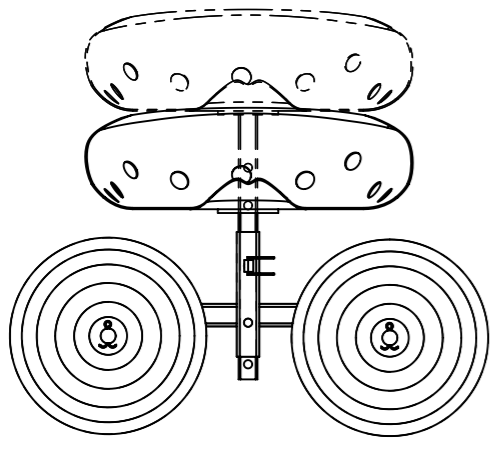


| Repère | Désignation | Quantité |
|--------------------|------------------------------|----------|
| A | Chassis roues fixes | 1 |
| B | Chassis roues mobiles | 1 |
| D | Plateau du chariot | 1 |
| E | Guidon du chariot | 1 |
| Ecrou | Ecrou M14 Zingué | 1 |
| Ecrou papillon | Ecrou papillon M10 | 3 |
| Goupille fendue | Goupille fendue 5 x 30 | 4 |
| Rondelle | Rondelle Ø14 série LLU | 1 |
| Vis Hexagonale | Vis hexagonale M14 x 90 PF | 1 |
| Vis Hexagonale | vis hexagonale M10 x 70 | 3 |
| Vis papillon | Vis papillon M10 x 60 | 2 |
| maillon_rapide_5mm | Maillon rapide Ø5mm | 2 |
| ressort | Ressort à traction 1,8x14x80 | 2 |
| Roue gonflable | Roue gonflable Ø260 ; L85 | 4 |

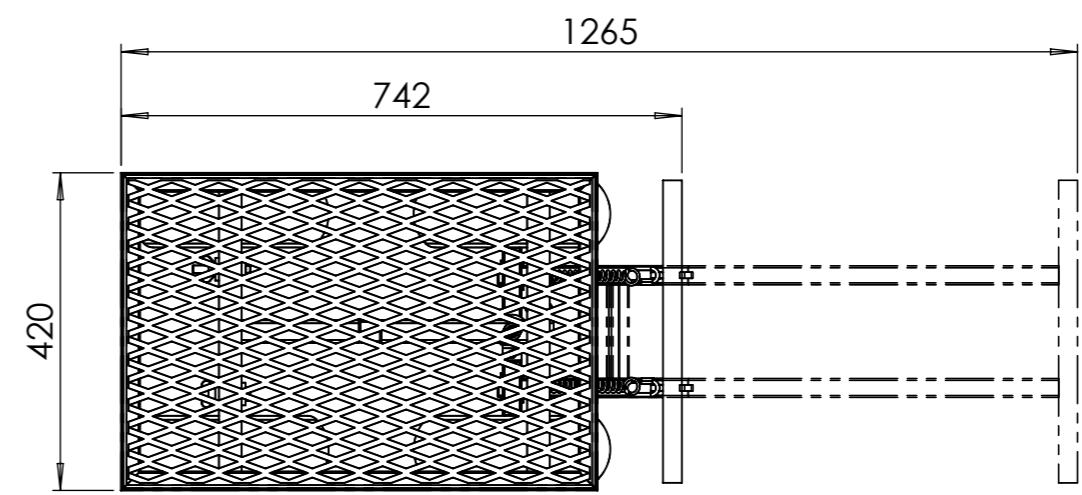
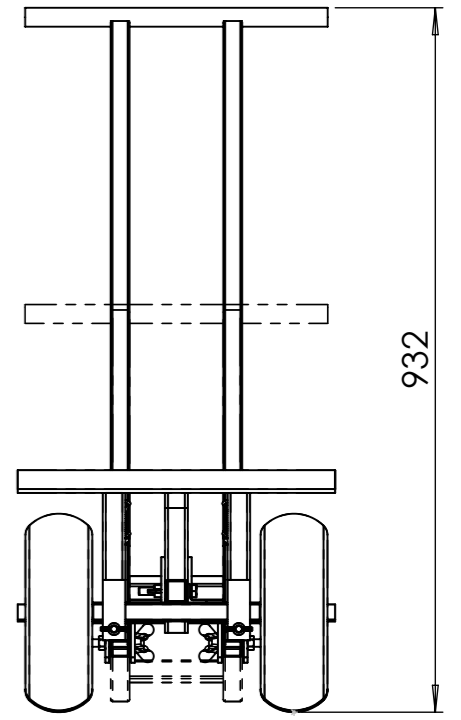
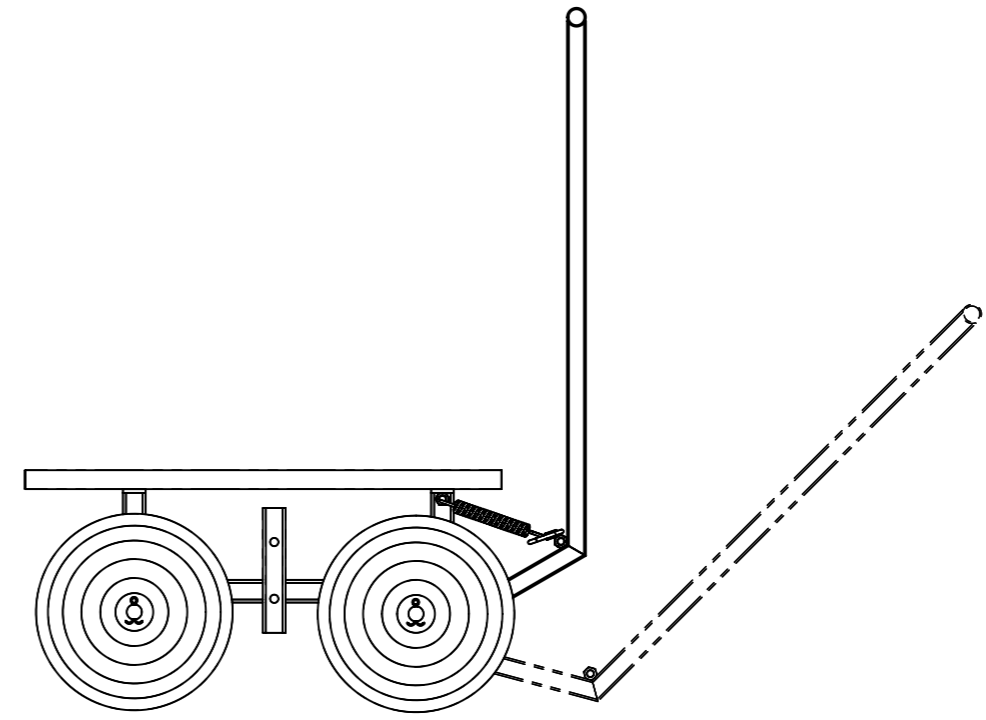
| | | | | | |
|---------|--------------|---------|-----|---|----------------|
| Outil | La Feignasse | | |  | |
| Date | 01/02/2024 | Version | 1.3 | | page n° 4 / 25 |
| Feuille | Encombrement | | | | |



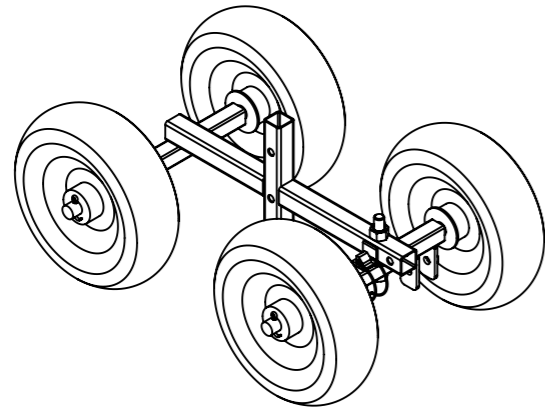
Mode siège de récolte



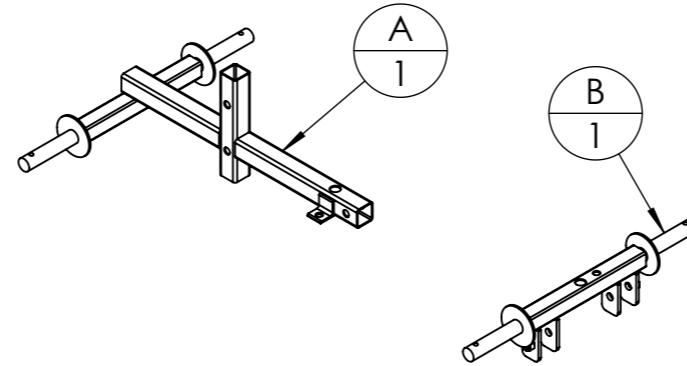
Mode chariot de récolte



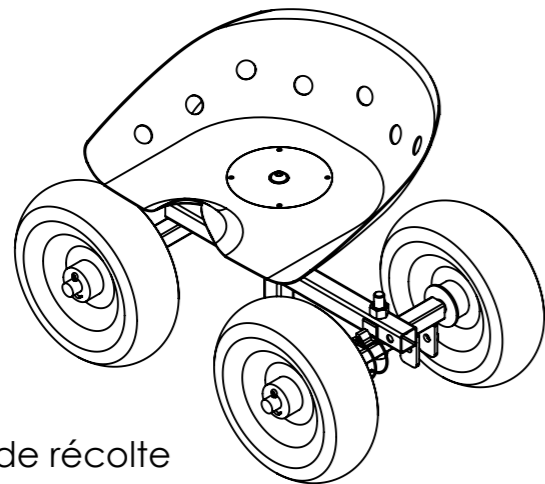
Châssis seul



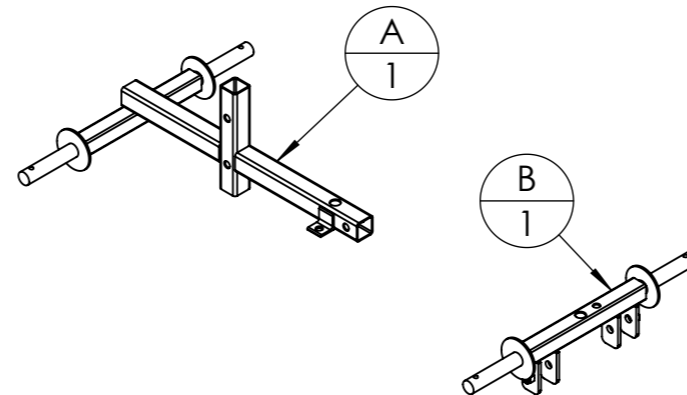
=



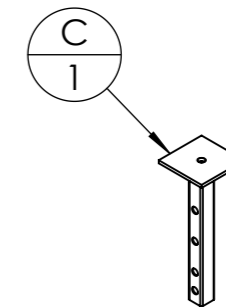
Mode siège de récolte



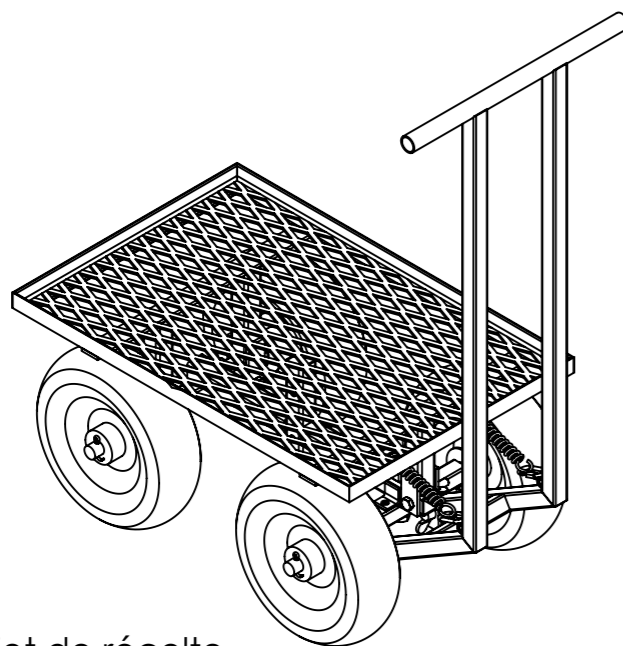
=



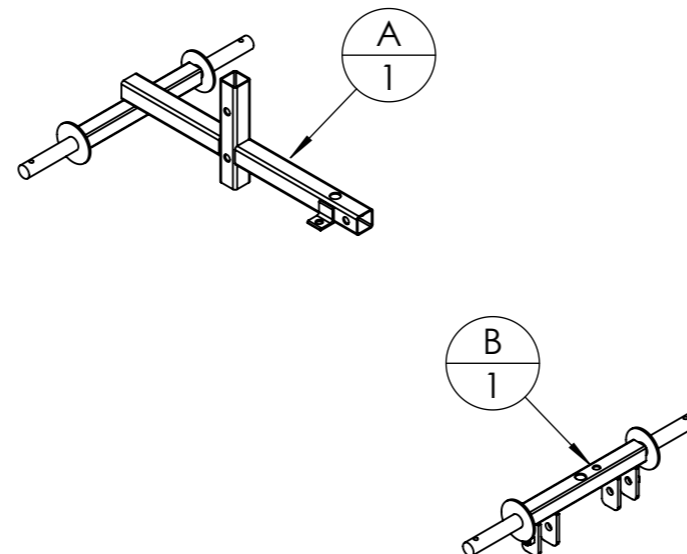
+



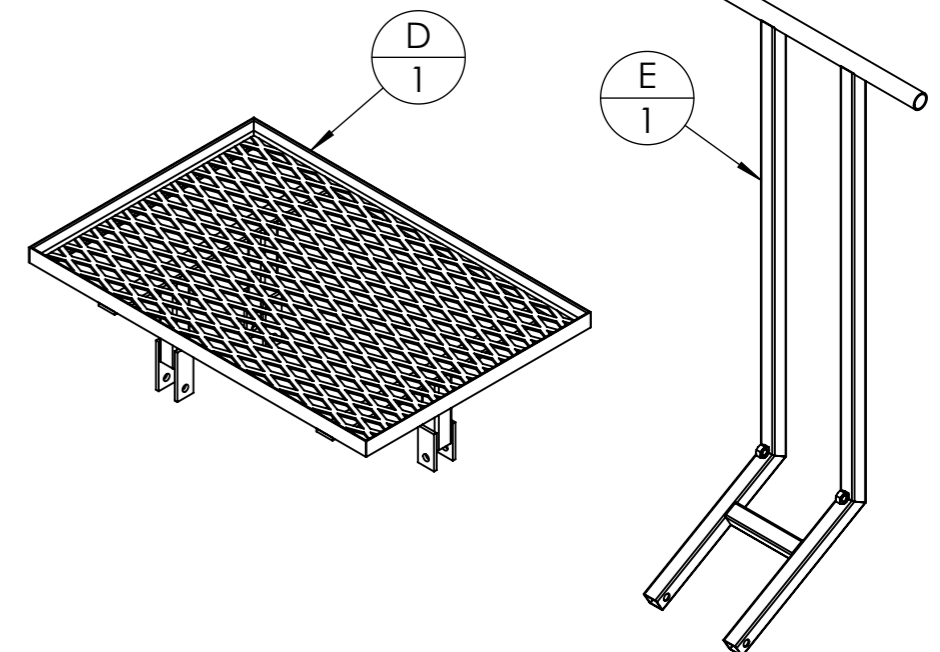
Mode chariot de récolte

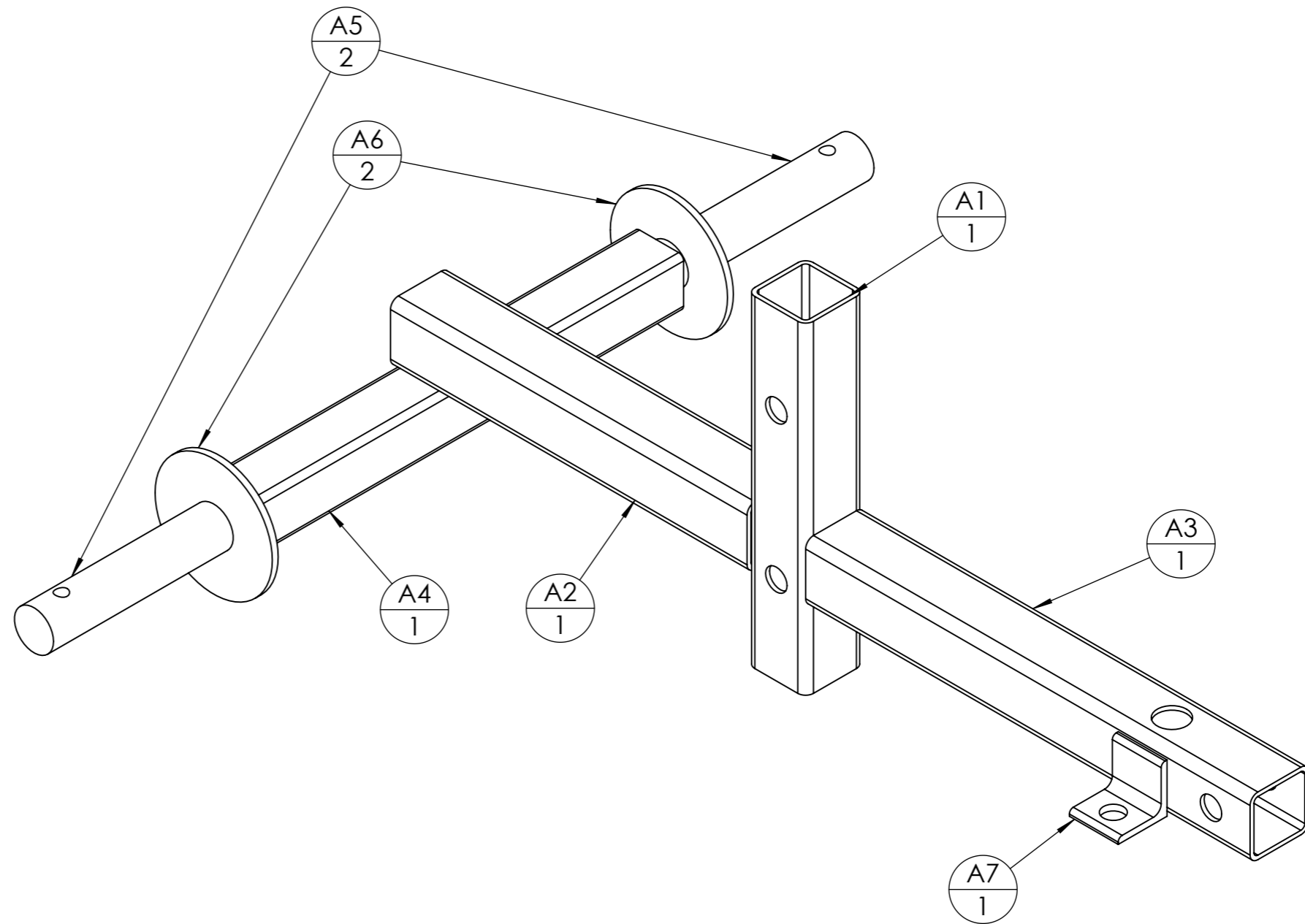


=

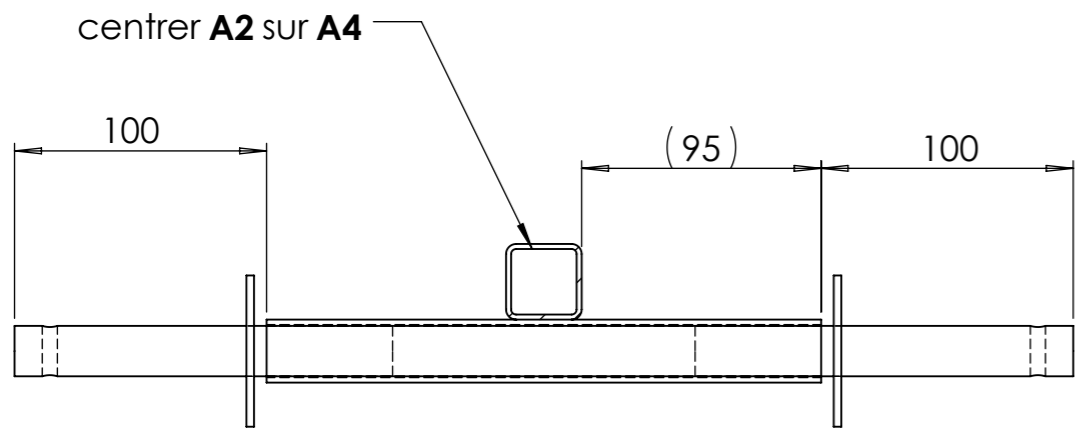


+

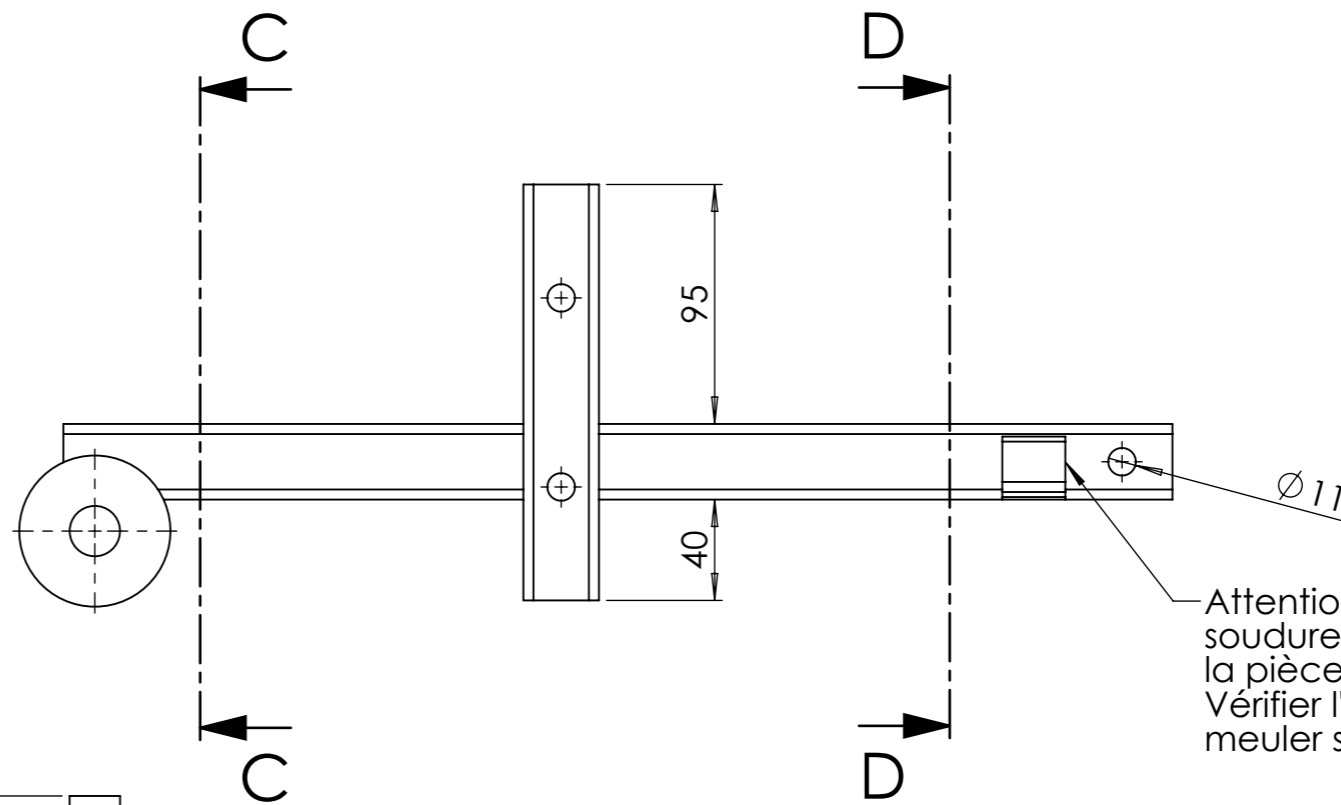




| repère | Désignation | ANGLE1 | ANGLE2 | p | LONGUEUR | Quantité |
|--------|------------------------|--------|--------|-------------------|----------|----------|
| A1 | Tube carré 30 x 2 | 0° | 0° | 4x Ø11 - | 165 | 1 |
| A2 | Tube carré 30 x 2 | 0° | 0° | | 183 | 1 |
| A3 | Tube carré 30 x 2 | 0° | 0° | 2x Ø11 - 2x Ø15 - | 228 | 1 |
| A4 | Tube carré 25 x 2 | 0° | 0° | | 220 | 1 |
| A5 | étiré rond Ø20 | 0° | 0° | 1x Ø6 - | 150 | 2 |
| A6 | Rondelle Ø20 série LLU | | | | STD | 2 |
| A7 | Cornière 25 x 25 x 3 | 0° | 0° | 1x Ø10,2 - | 25 | 1 |

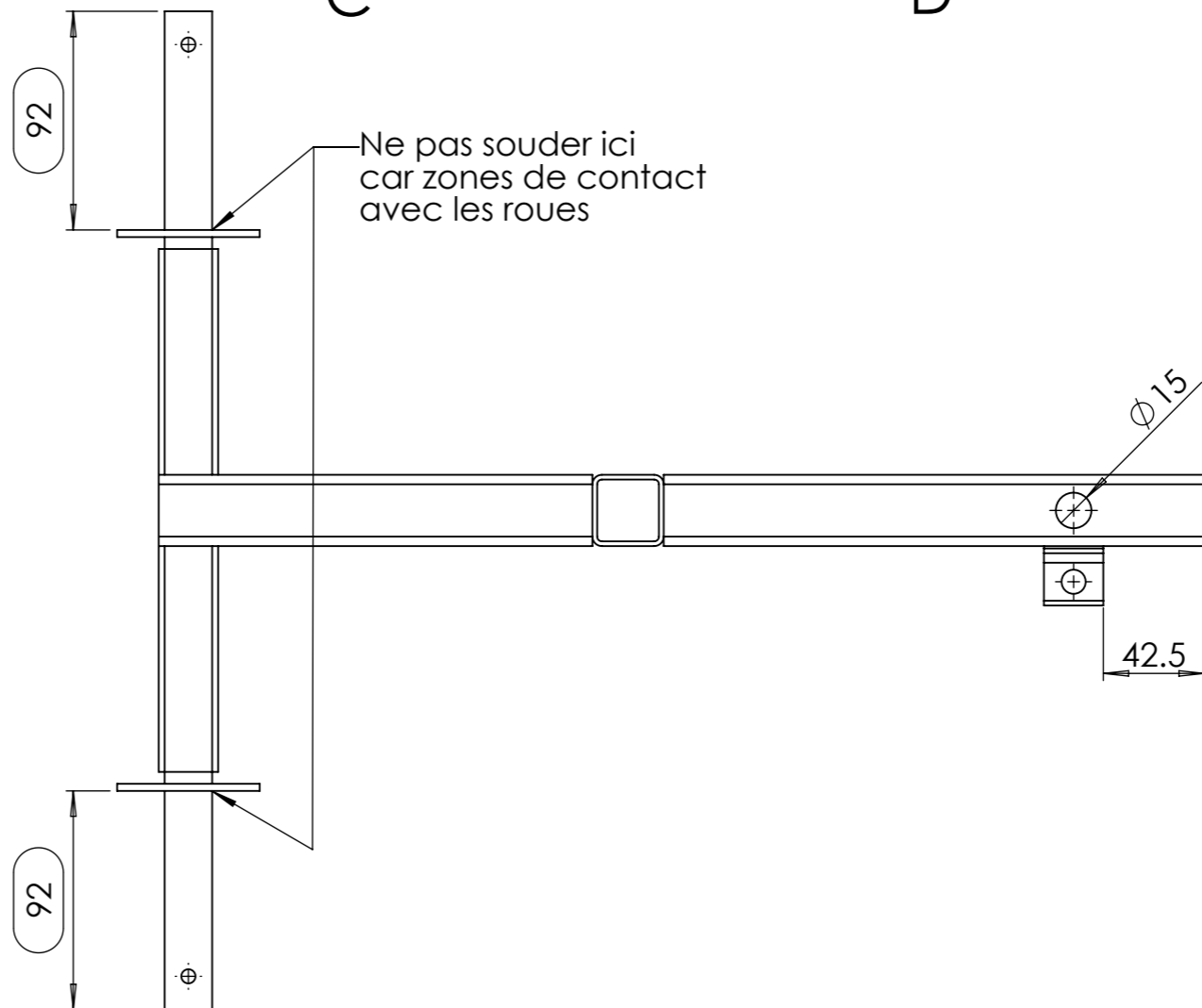
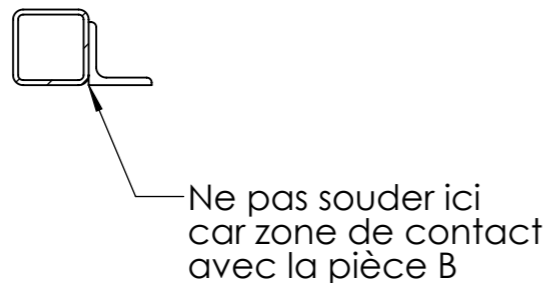


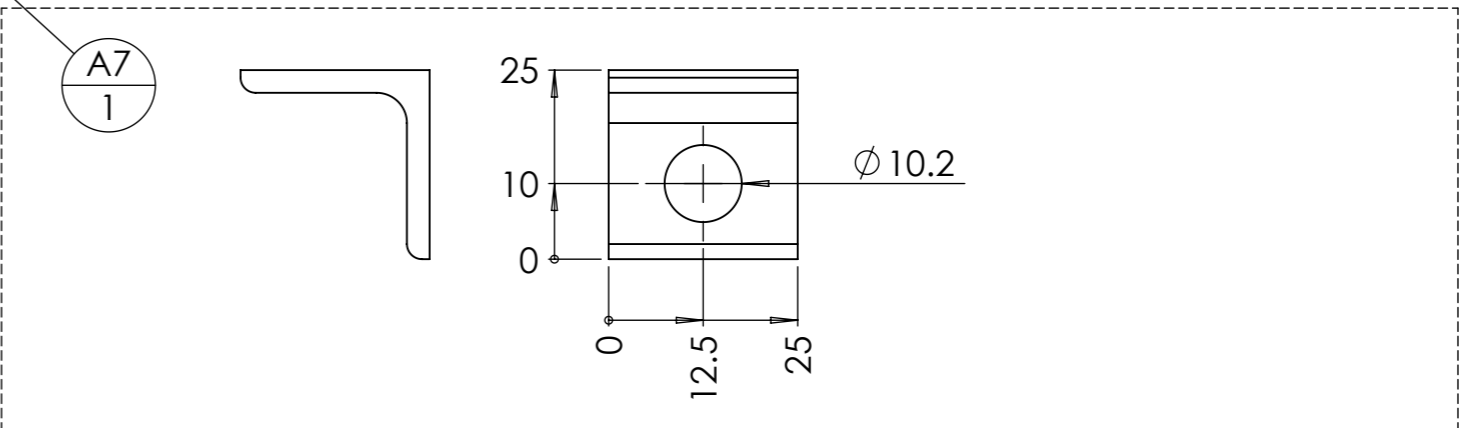
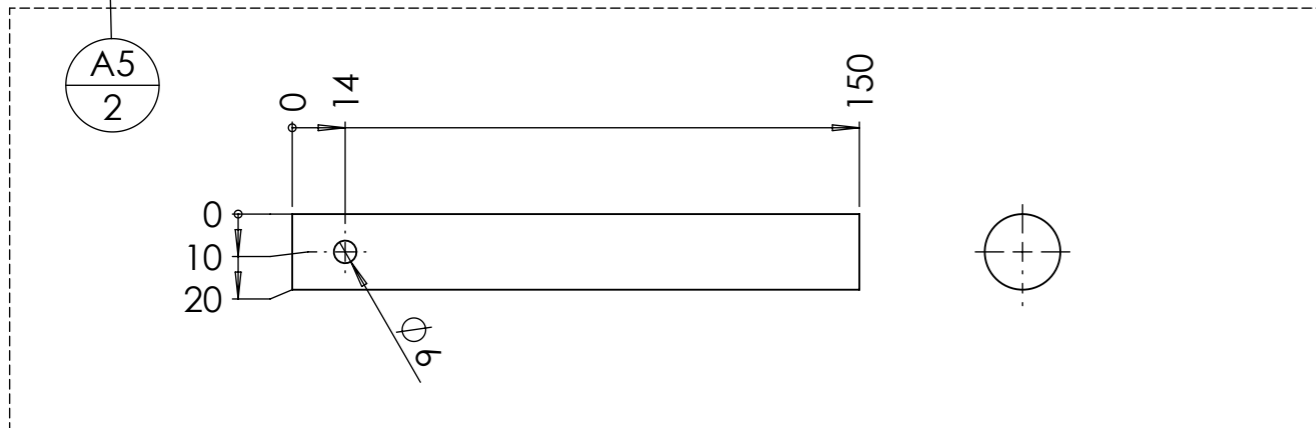
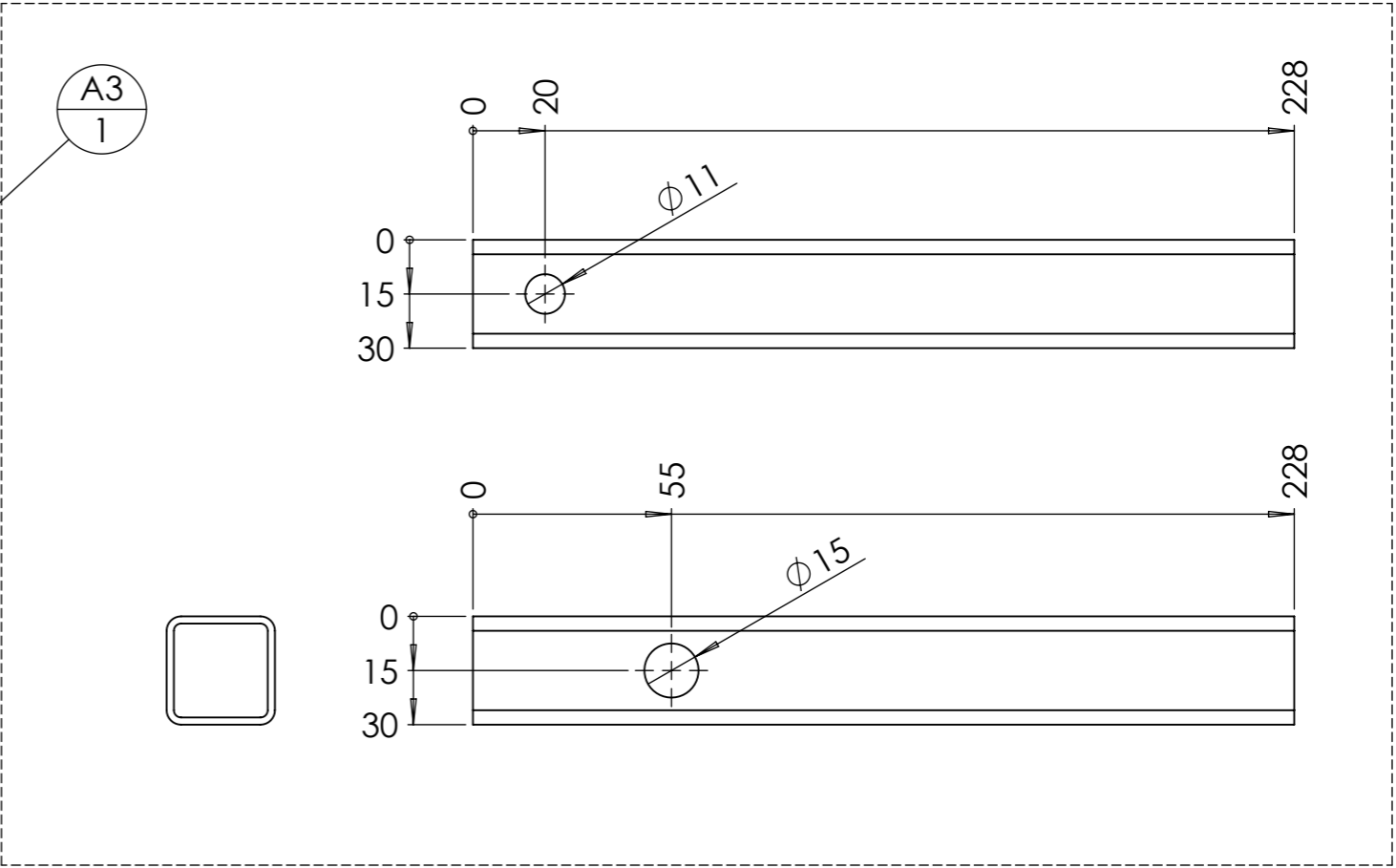
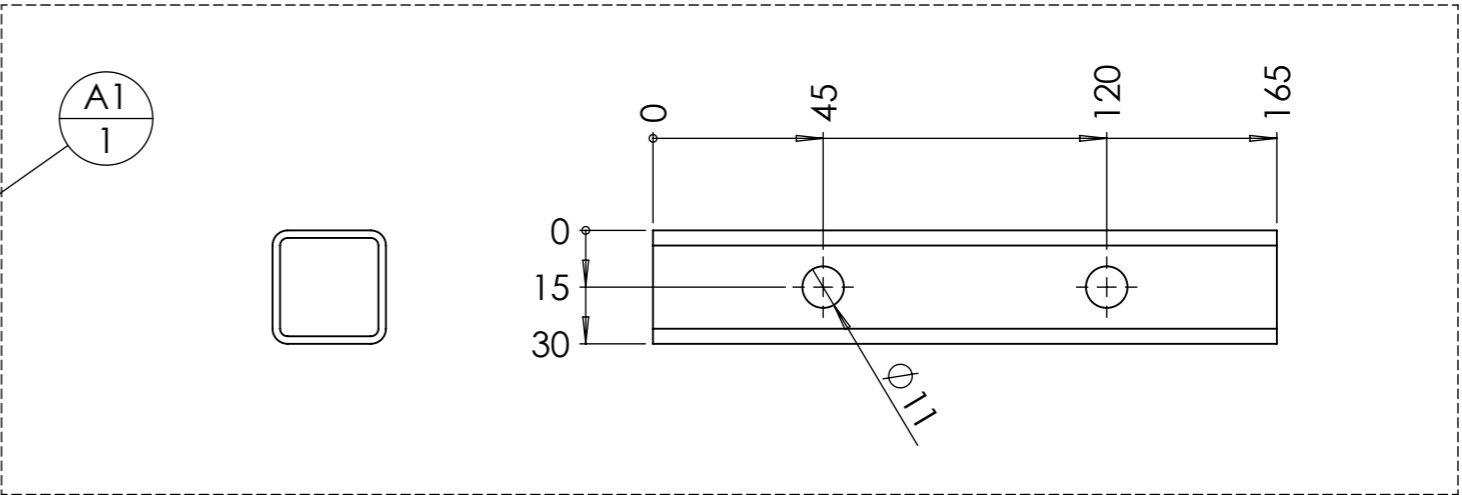
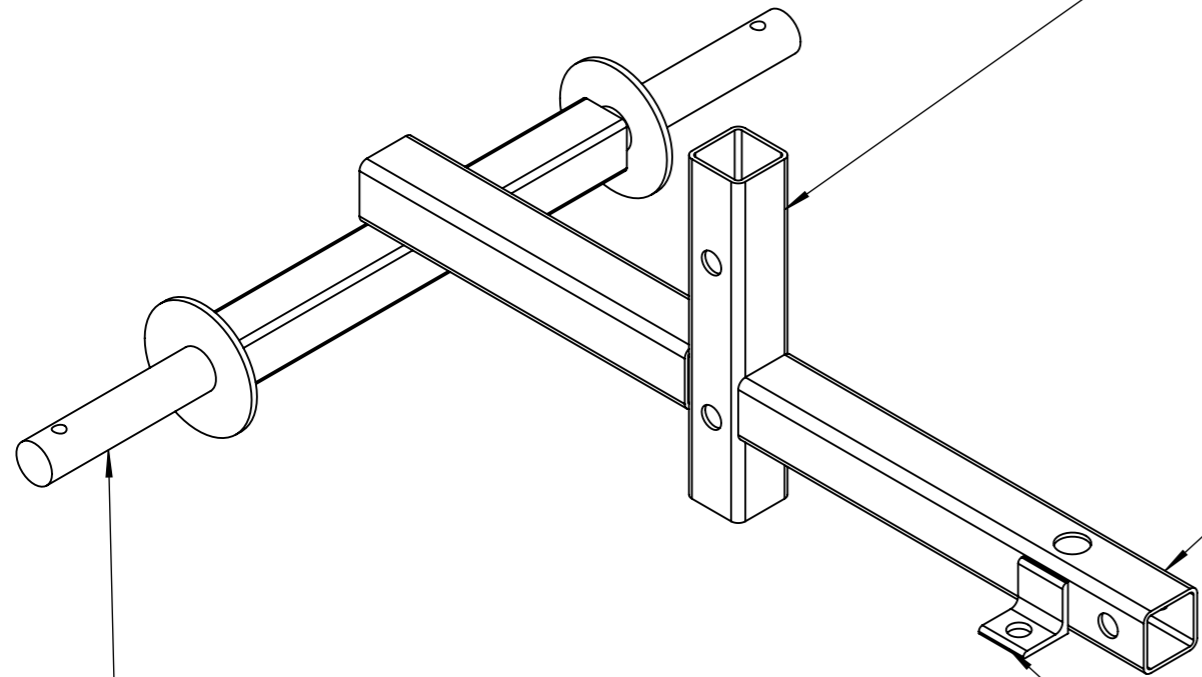
COUPE C-C

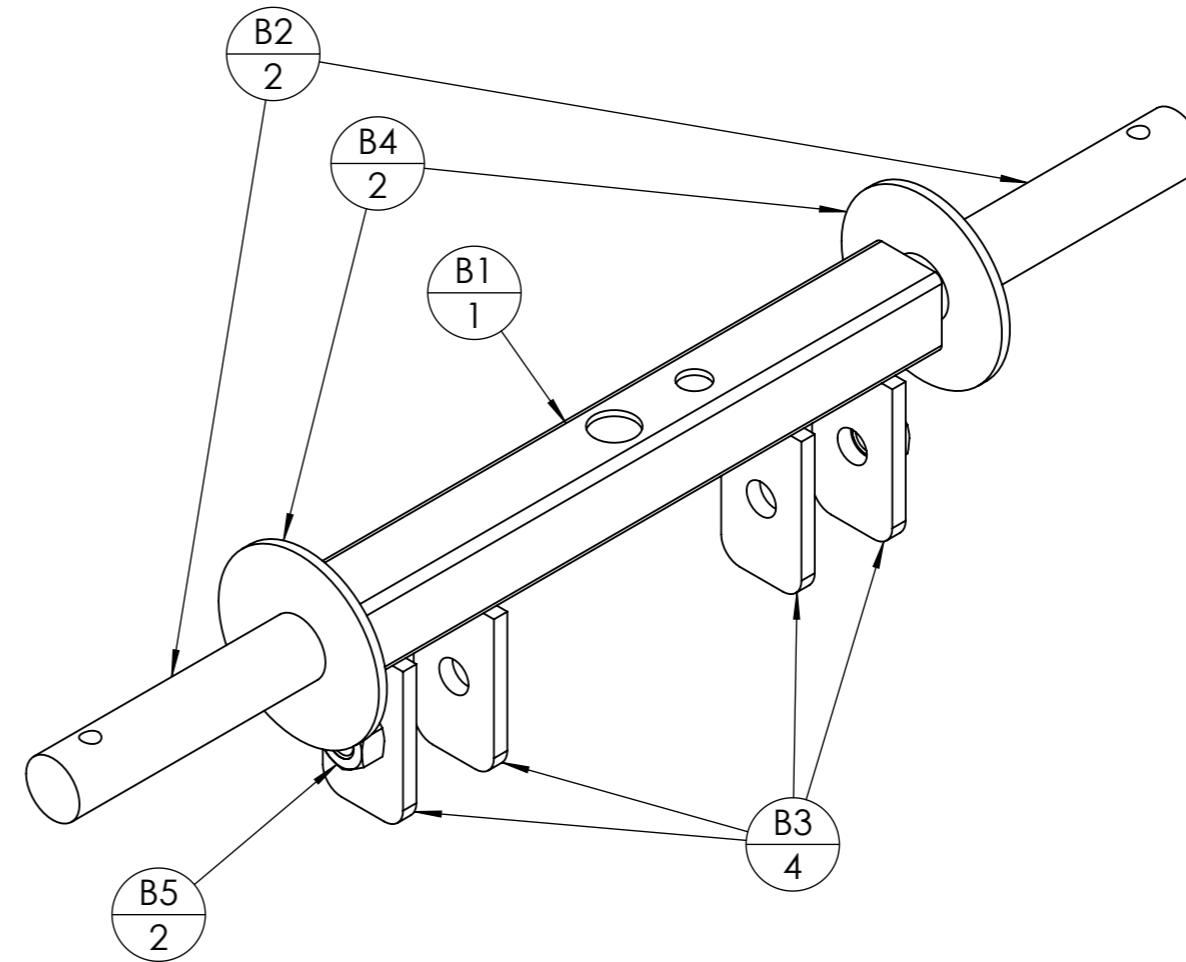


Attention à la taille de la soudure car peu d'écart avec la pièce D en mode chariot. Vérifier l'assemblage et meuler si besoin.

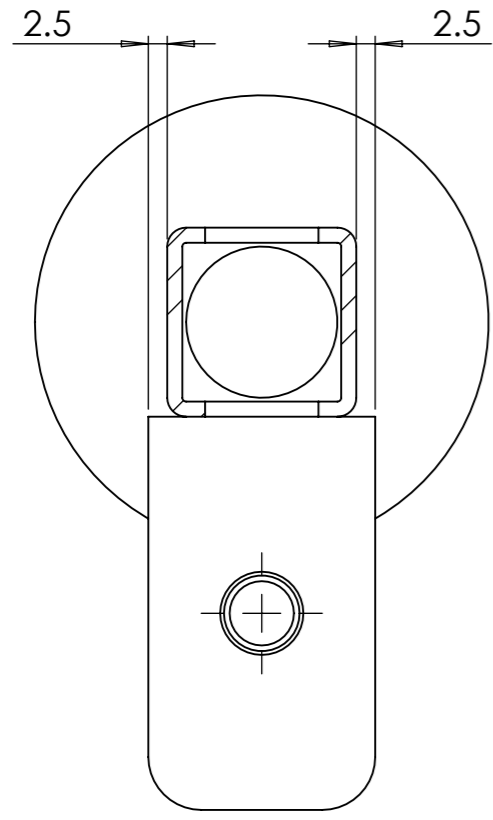
COUPE D-D



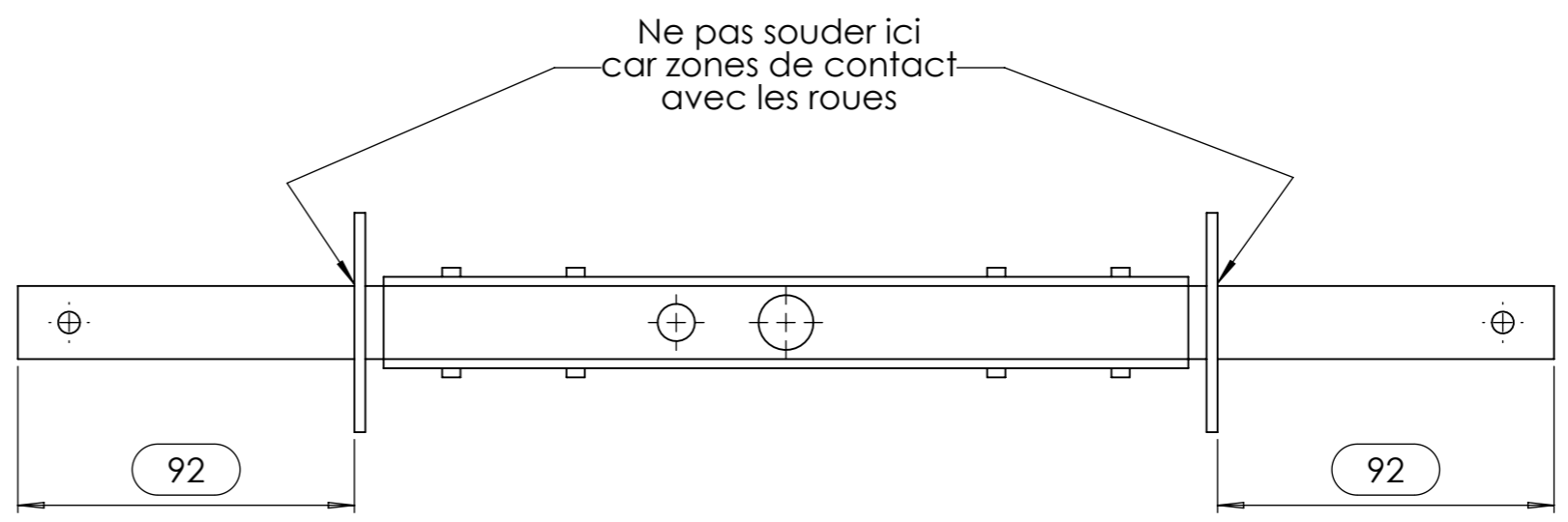
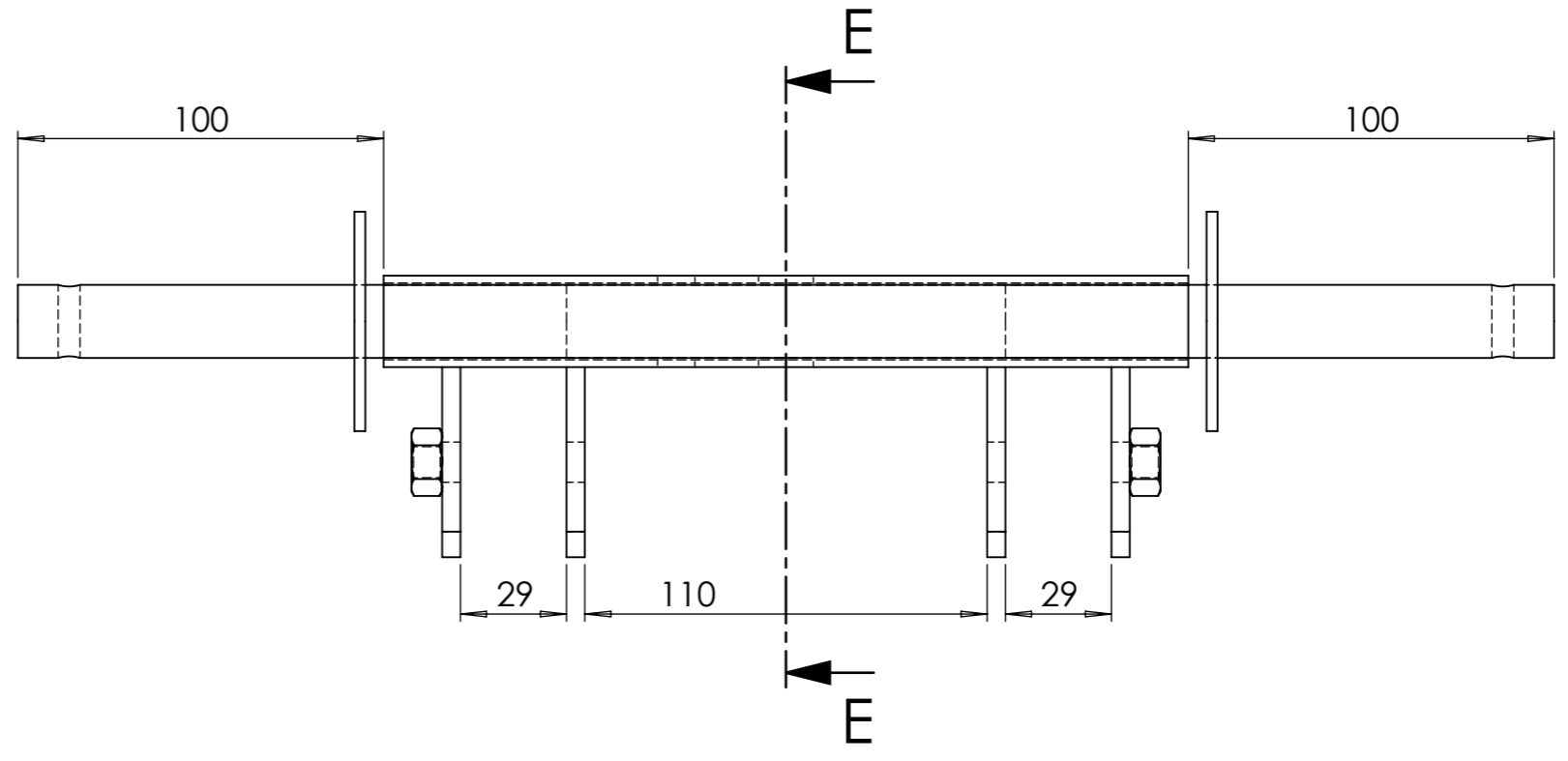


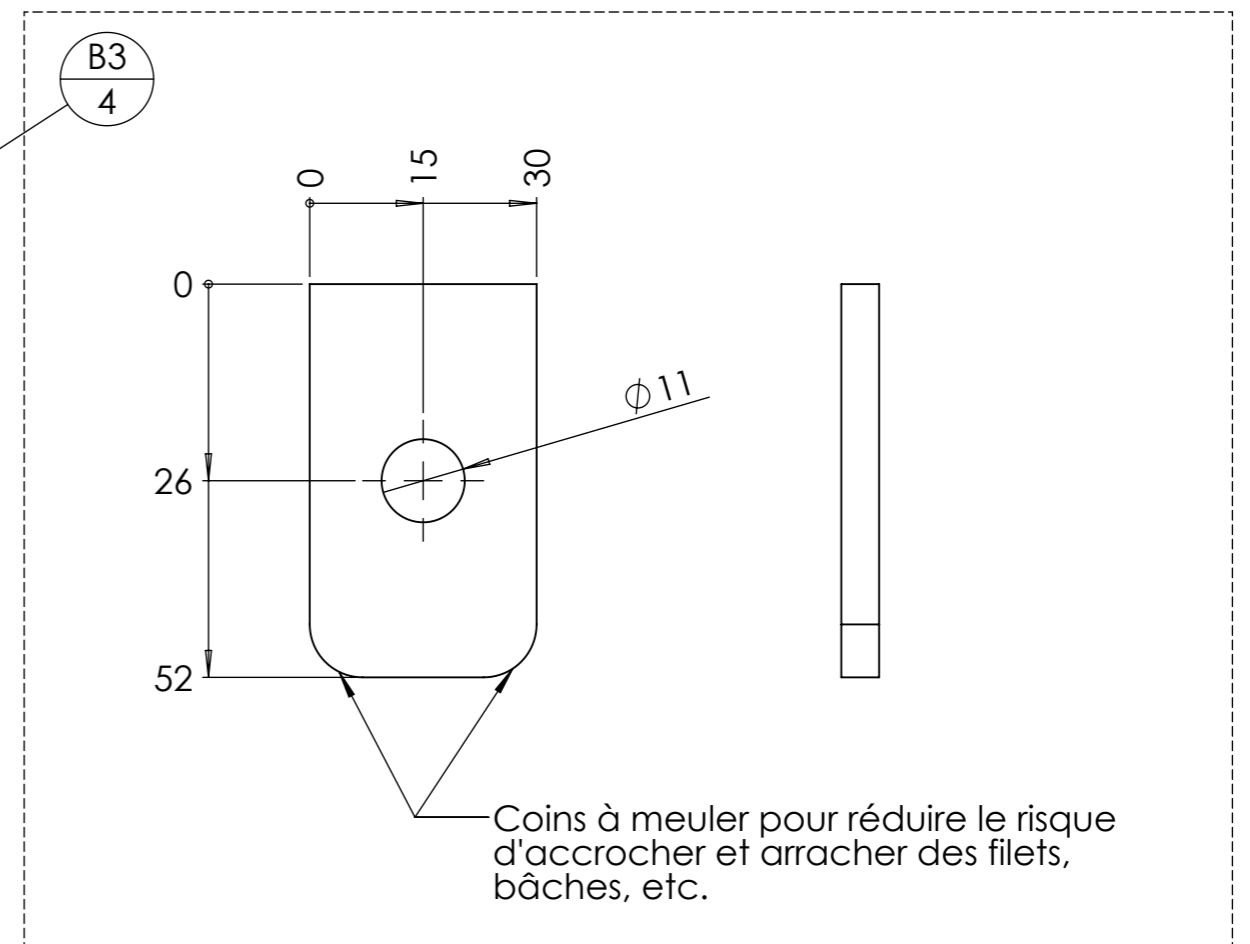
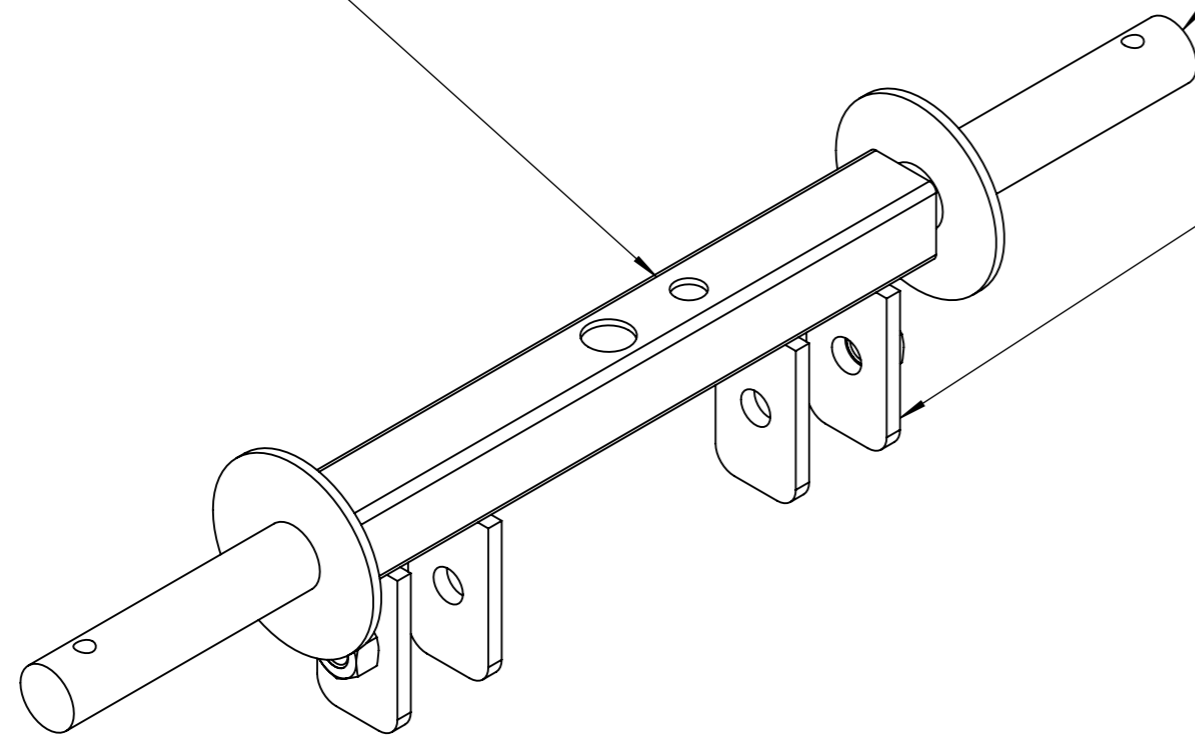
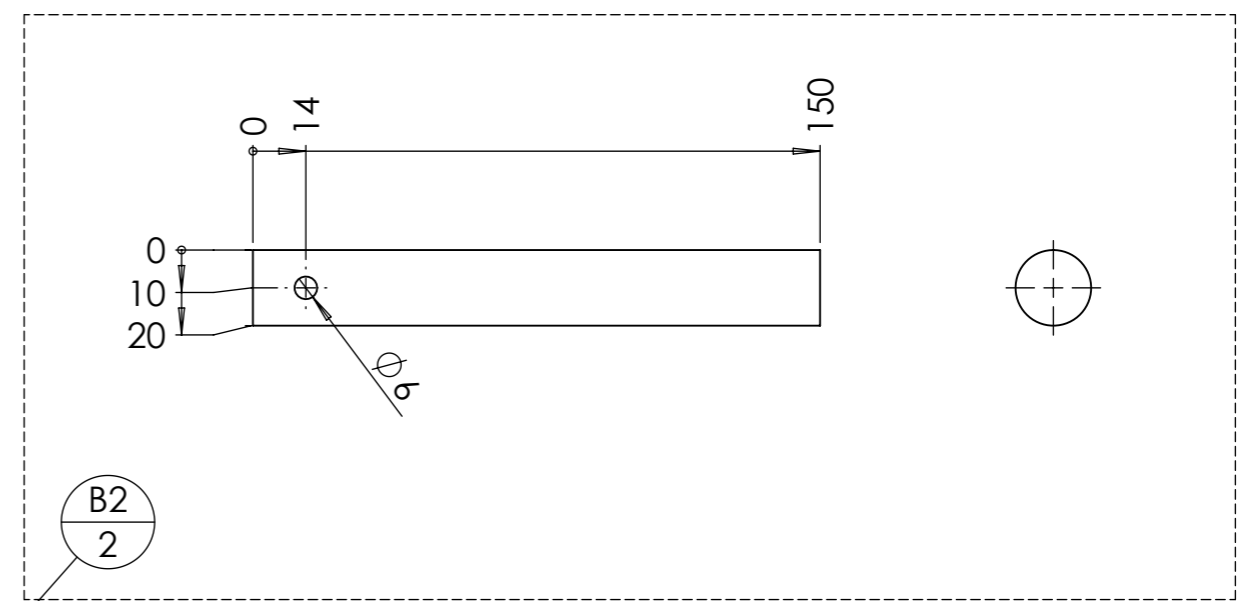
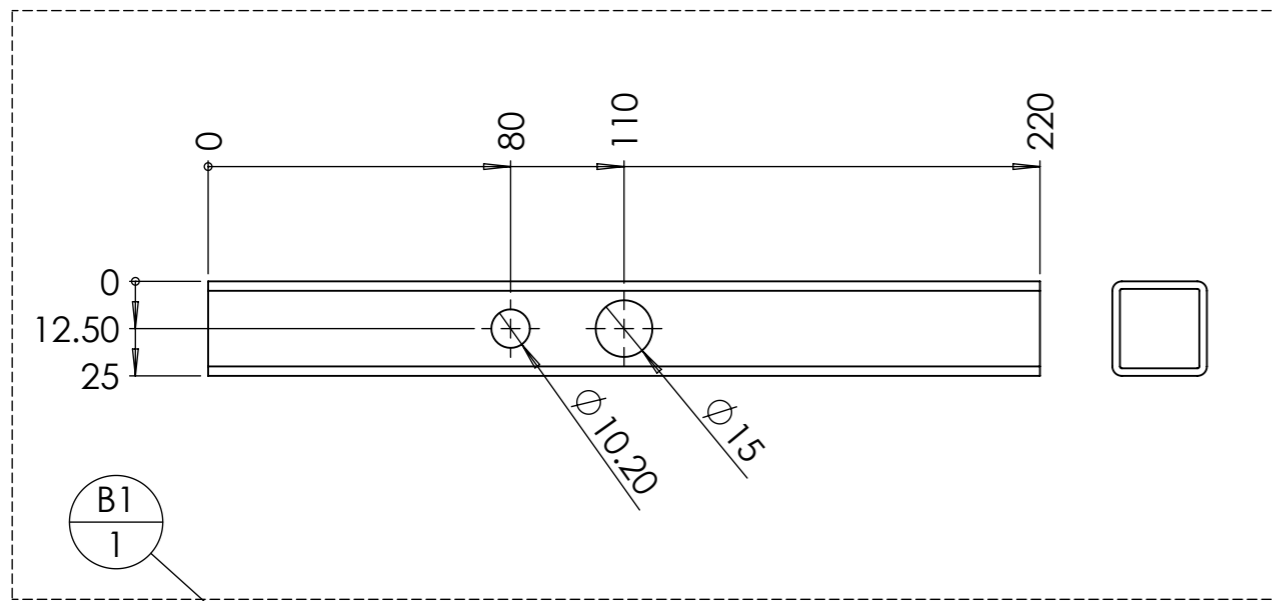


| repère | Désignation | ANGLE1 | ANGLE2 | P | LONGUEUR | Quantité |
|--------|------------------------|--------|--------|---------------------|----------|----------|
| B1 | Tube carré 25 x 2 | 0° | 0° | 2x Ø15 - 2x Ø10,2 - | 220 | 1 |
| B2 | étiré rond Ø20 | 0° | 0° | 1x Ø6 - | 150 | 2 |
| B3 | Fer plat 30 x 5 | 0° | 0° | 1x Ø11 - | 52 | 4 |
| B4 | Rondelle Ø20 série LLU | | | | STD | 2 |
| B5 | Ecrou M10 brut | | | | STD | 2 |

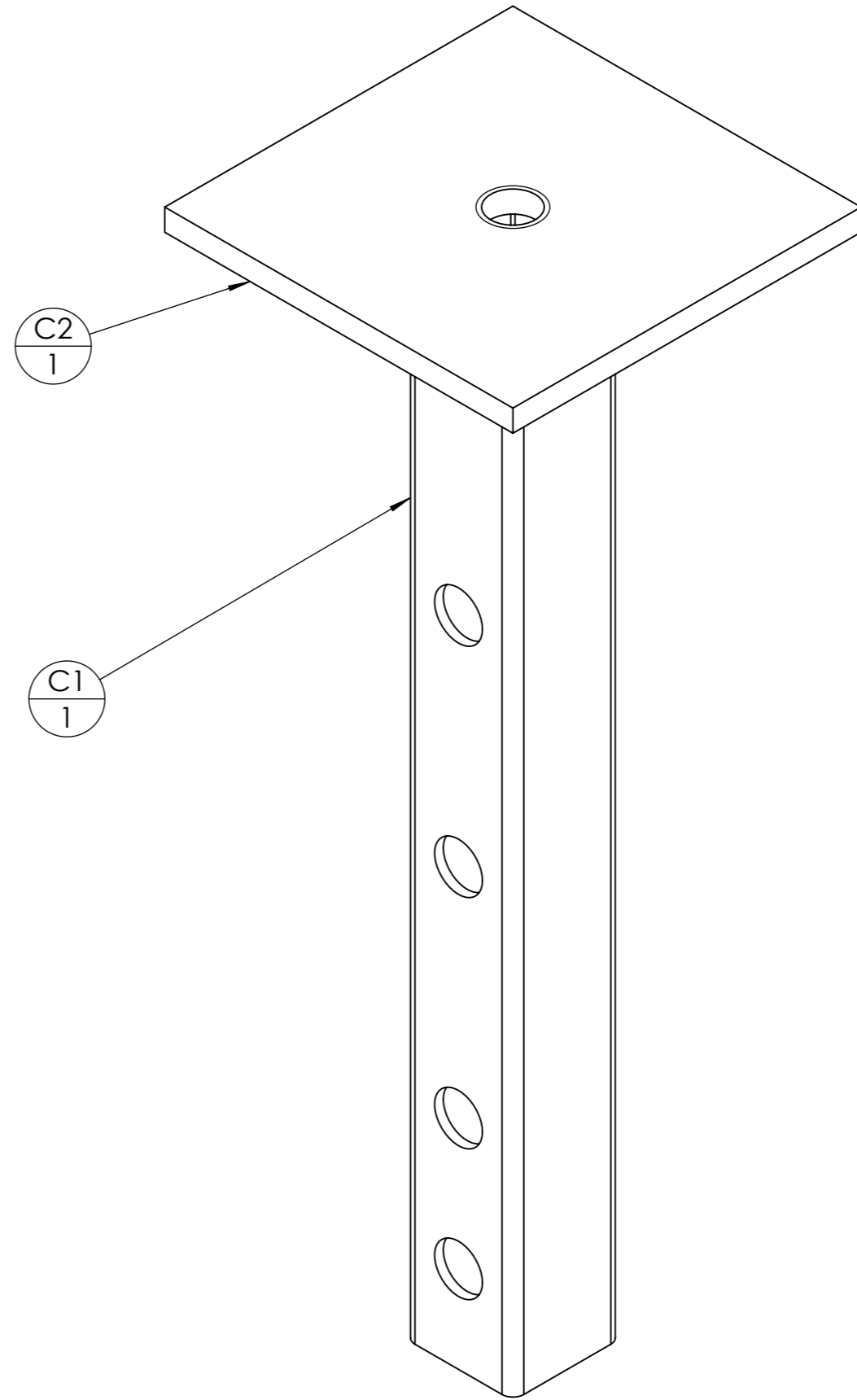


COUPE E-E
ECHELLE 1 : 1

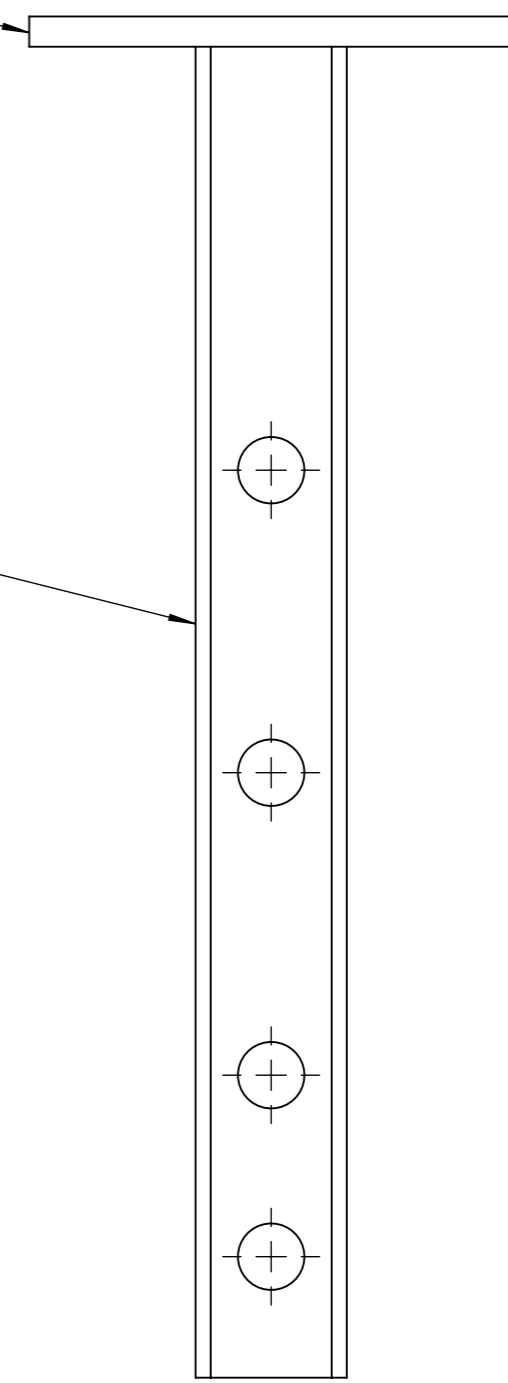
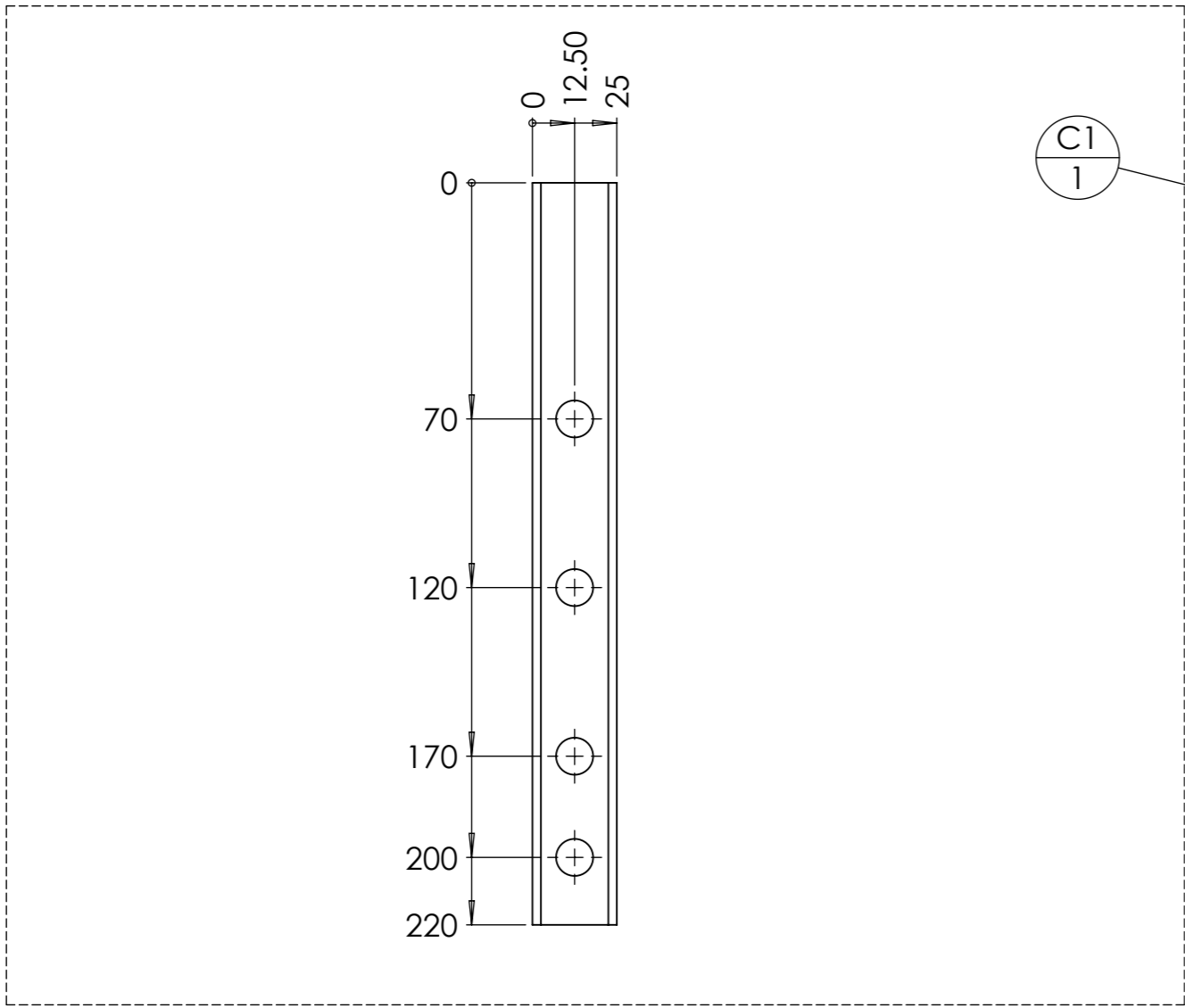
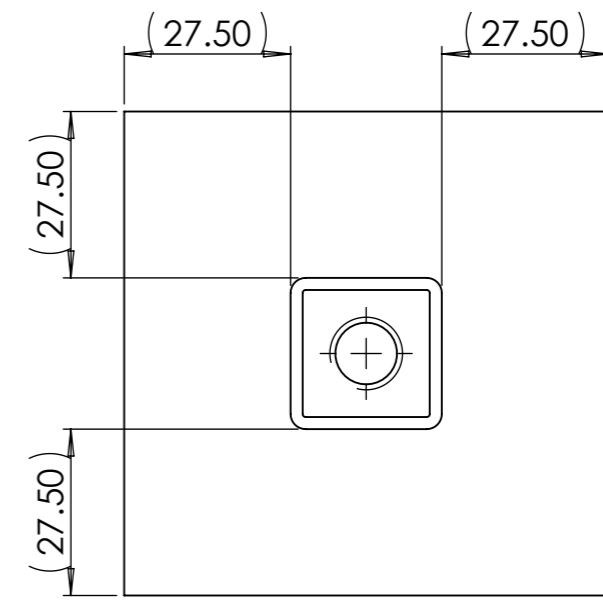
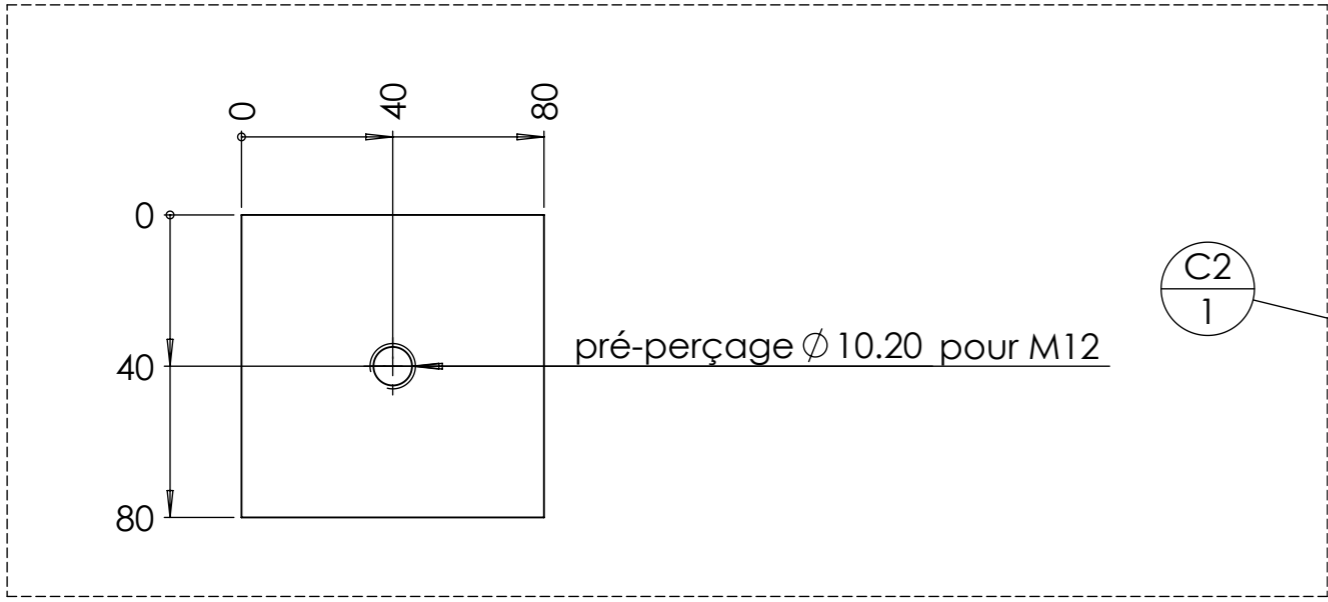


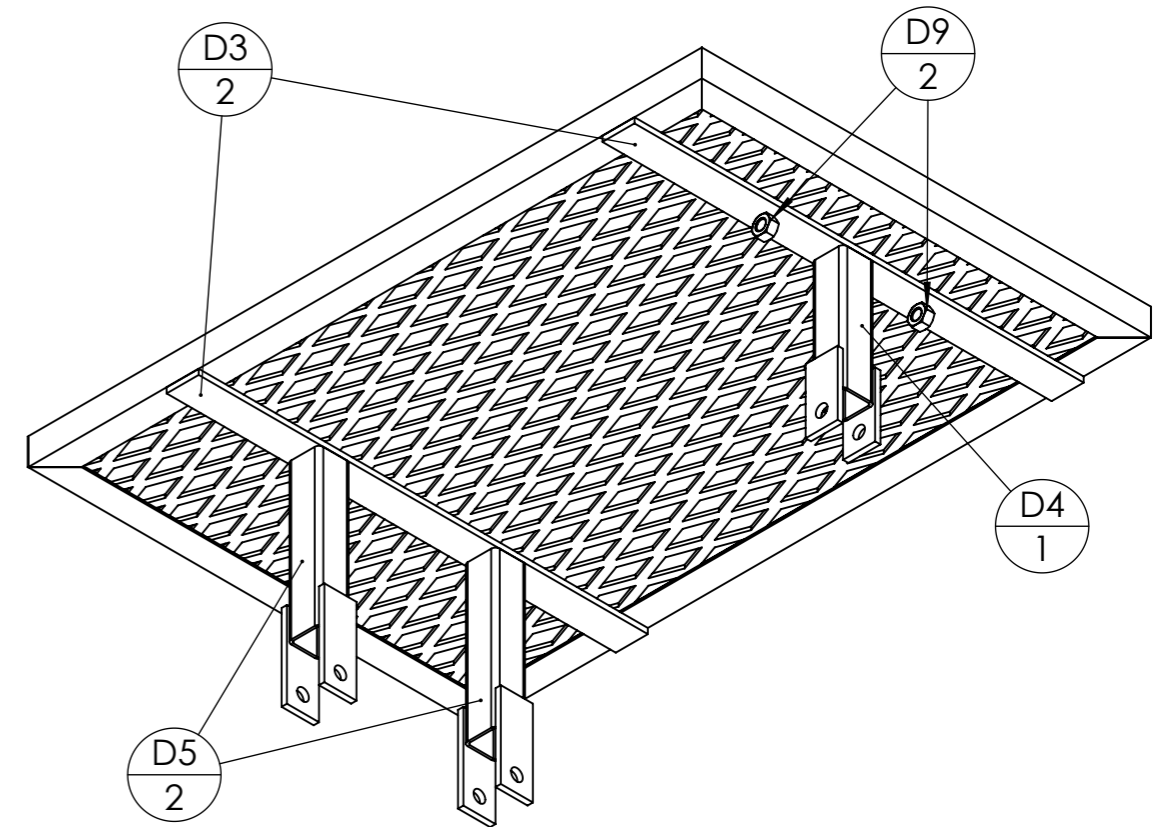
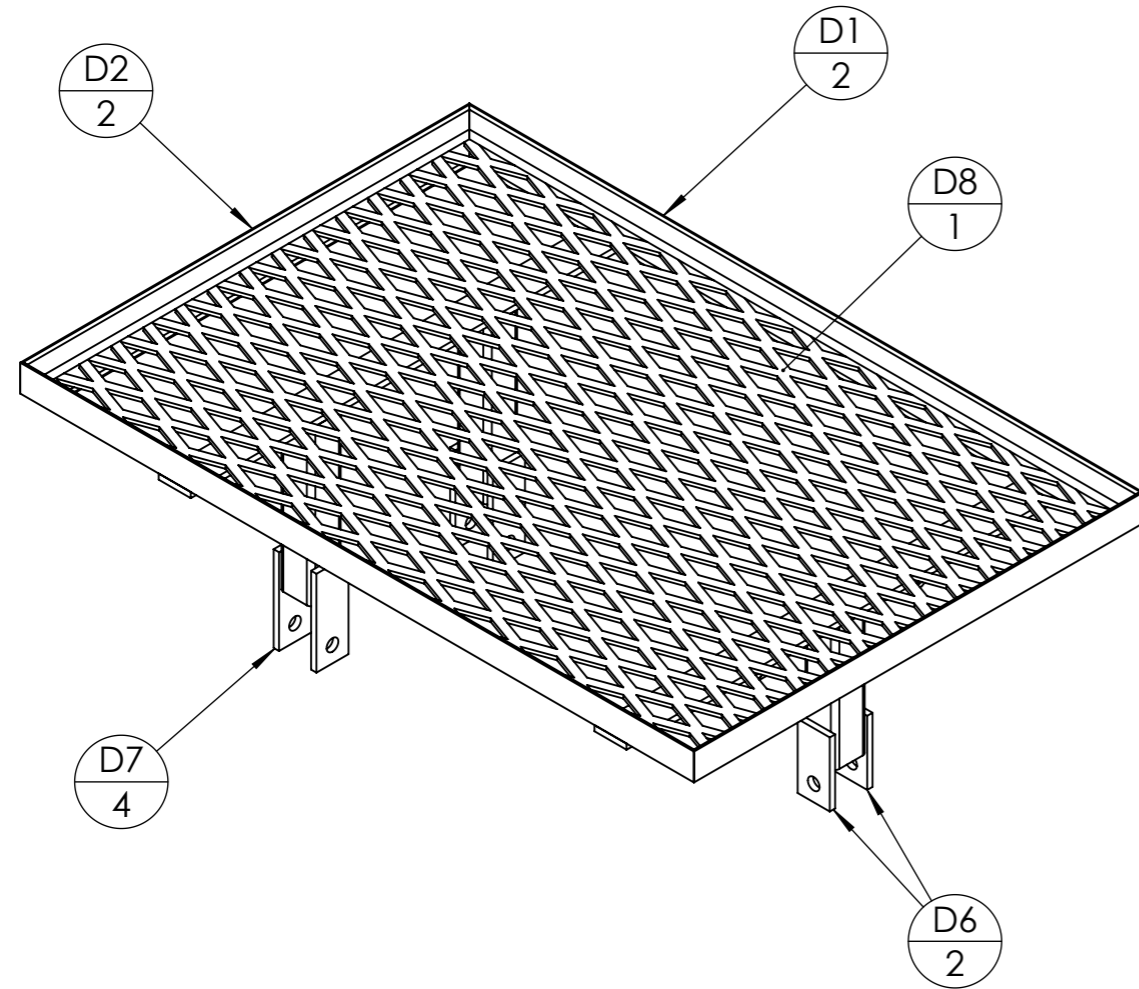


| | | | | | |
|---------|------------------|---------|-----|---|----------------|
| Outil | La Feignasse | | |  | |
| Date | 01/02/2024 | Version | 1.3 | | page n° 12/ 25 |
| Feuille | C - Nomenclature | | | | |



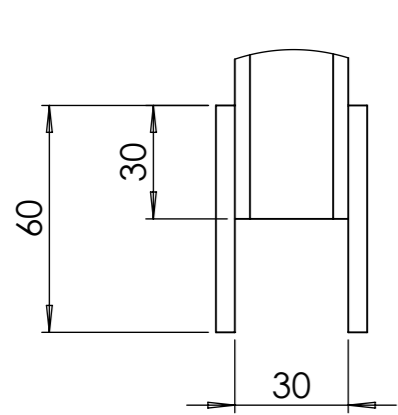
| repère | Désignation | ANGLE1 | ANGLE2 | P | LONGUEUR | Quantité |
|--------|-------------------|--------|--------|------------|----------|----------|
| C1 | Tube carré 25 x 2 | 0° | 0° | 8x Ø11 ; | 220 | 1 |
| C2 | Fer plat 80 x 5 | 0° | 0° | 1x Ø10,2 ; | 80 | 1 |



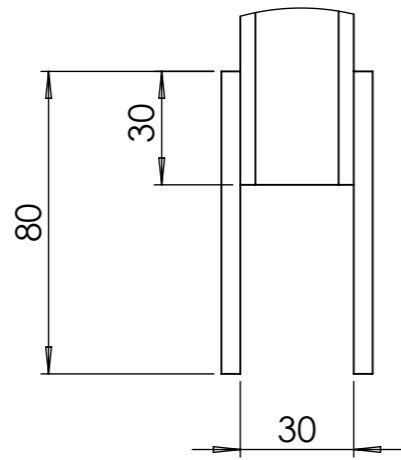


| repère | Désignation | ANGLE1 | ANGLE2 | p | LONGUEUR | Quantité |
|--------|-------------------------------|--------|--------|----------|----------|----------|
| D1 | Cornière 25 x 25 x 3 | 45° | 45° | | 630 | 2 |
| D2 | Cornière 25 x 25 x 3 | 45° | 45° | | 420 | 2 |
| D3 | Fer plat 30 x 5 | 0° | 0° | | 420 | 2 |
| D4 | Tube carré 30 x 2 | 0° | 0° | | 115 | 1 |
| D5 | Tube carré 30 x 2 | 0° | 0° | | 145 | 2 |
| D6 | Fer plat 30 x 5 | 0° | 0° | 1x Ø11 ; | 60 | 2 |
| D7 | Fer plat 30 x 5 | 0° | 0° | 1x Ø11 ; | 80 | 4 |
| D8 | Métal déployé 62 x 30 - 6 x 3 | | | | STD | 1 |
| D9 | Ecrou M10 brut | | | | STD | 2 |

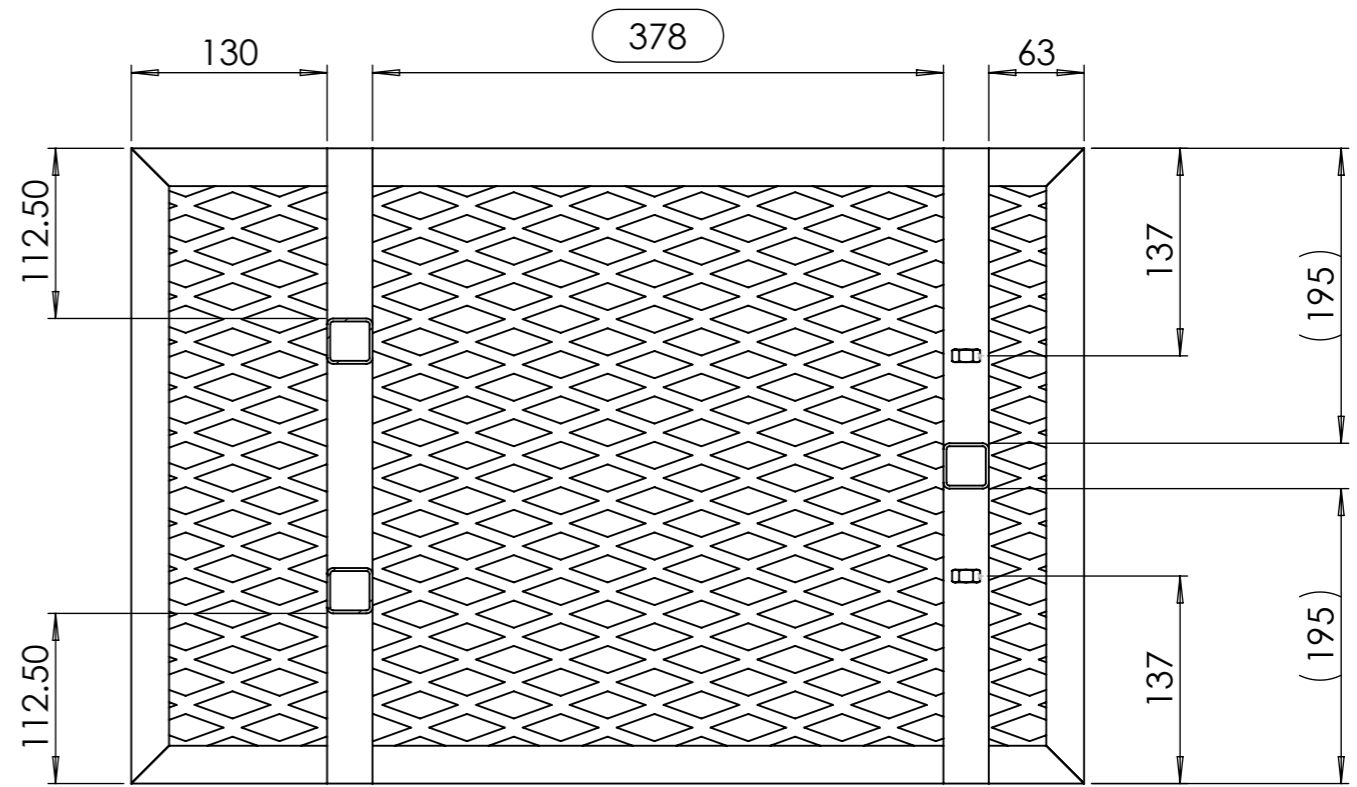
| | | | | | |
|---------|----------------|---------|-----|----------------|---|
| Outil | La Feignasse | | | |  |
| Date | 01/02/2024 | Version | 1.3 | page n° 15/ 25 | |
| Feuille | D - Assemblage | | | | |



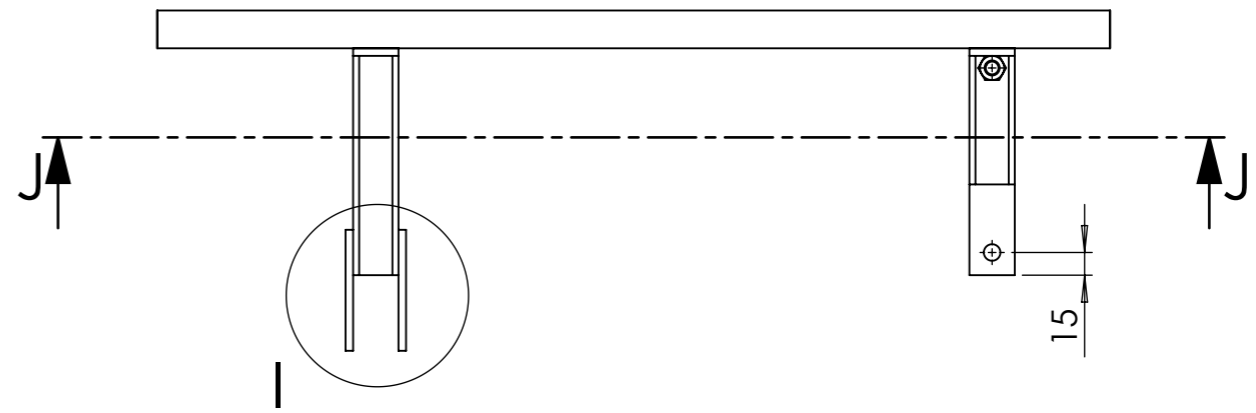
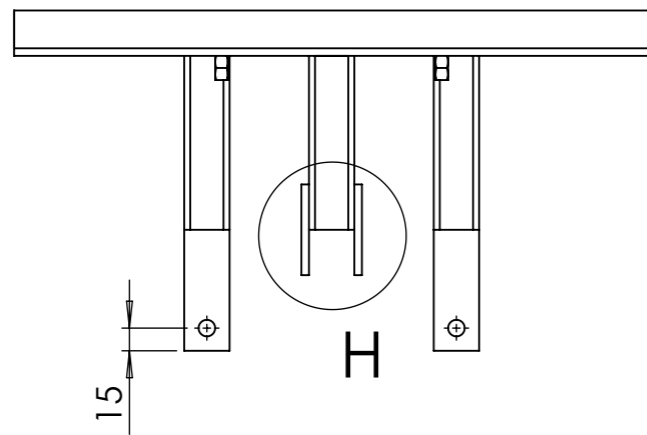
DÉTAIL H
ECHELLE 1 : 2

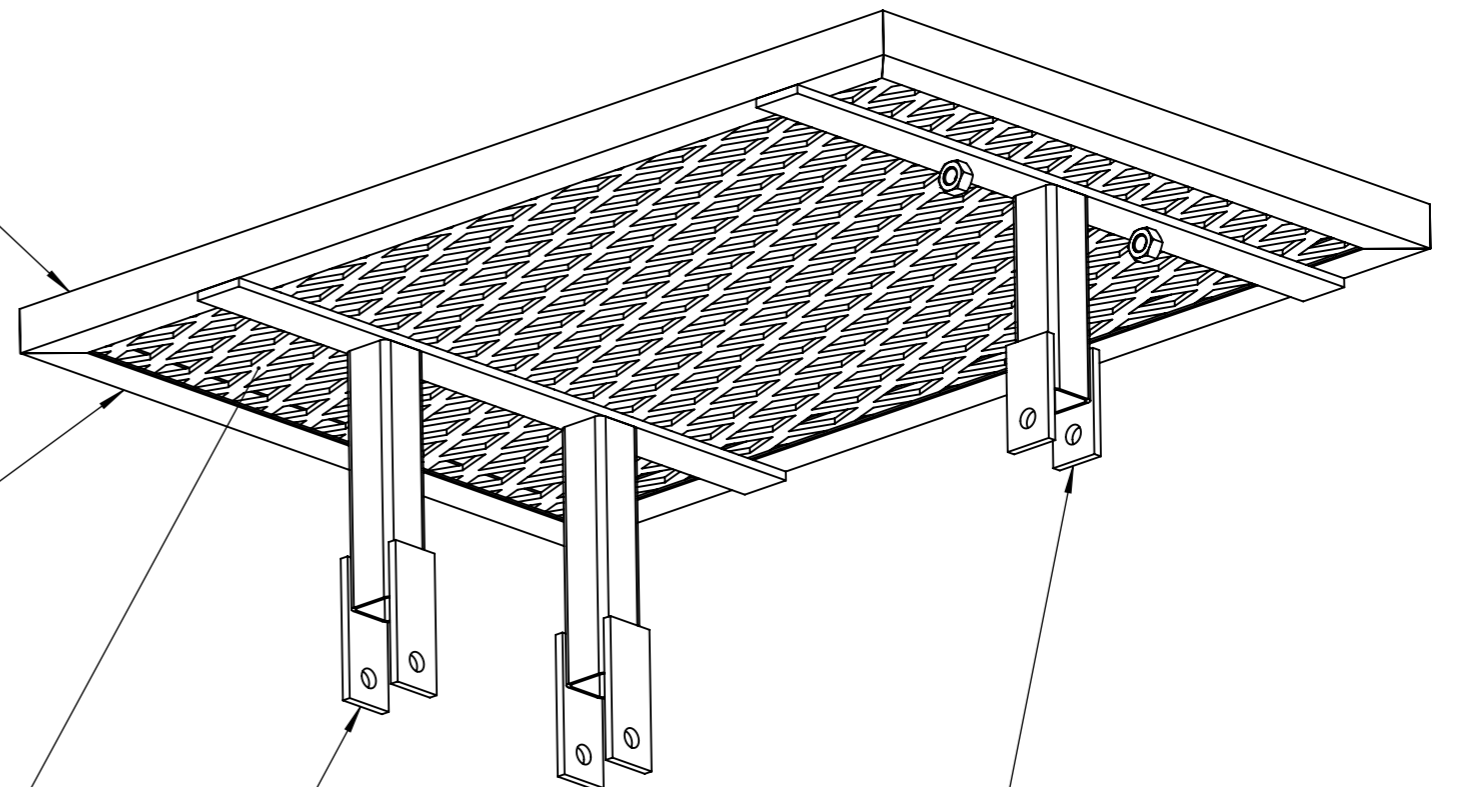
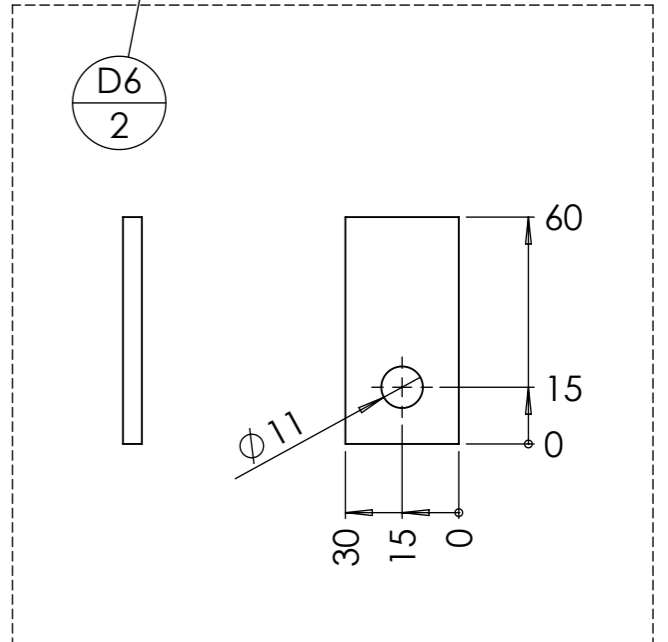
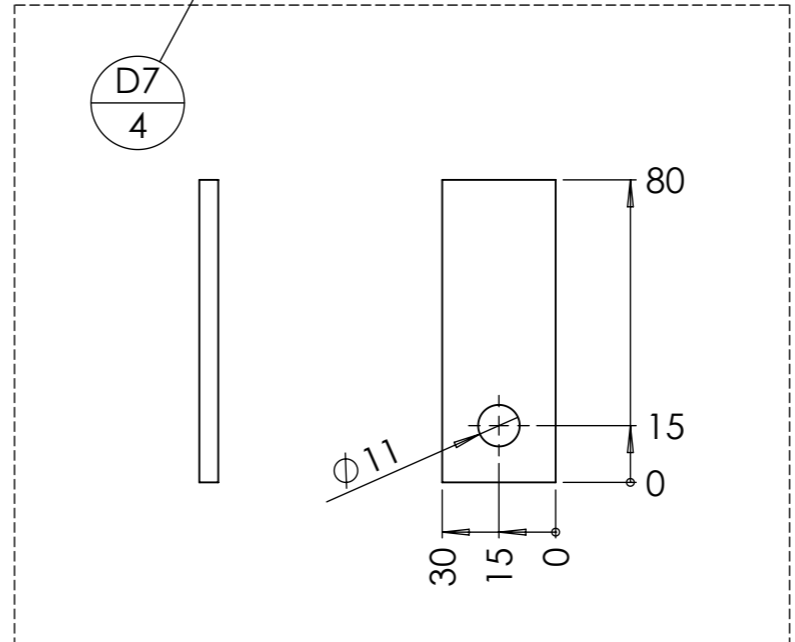
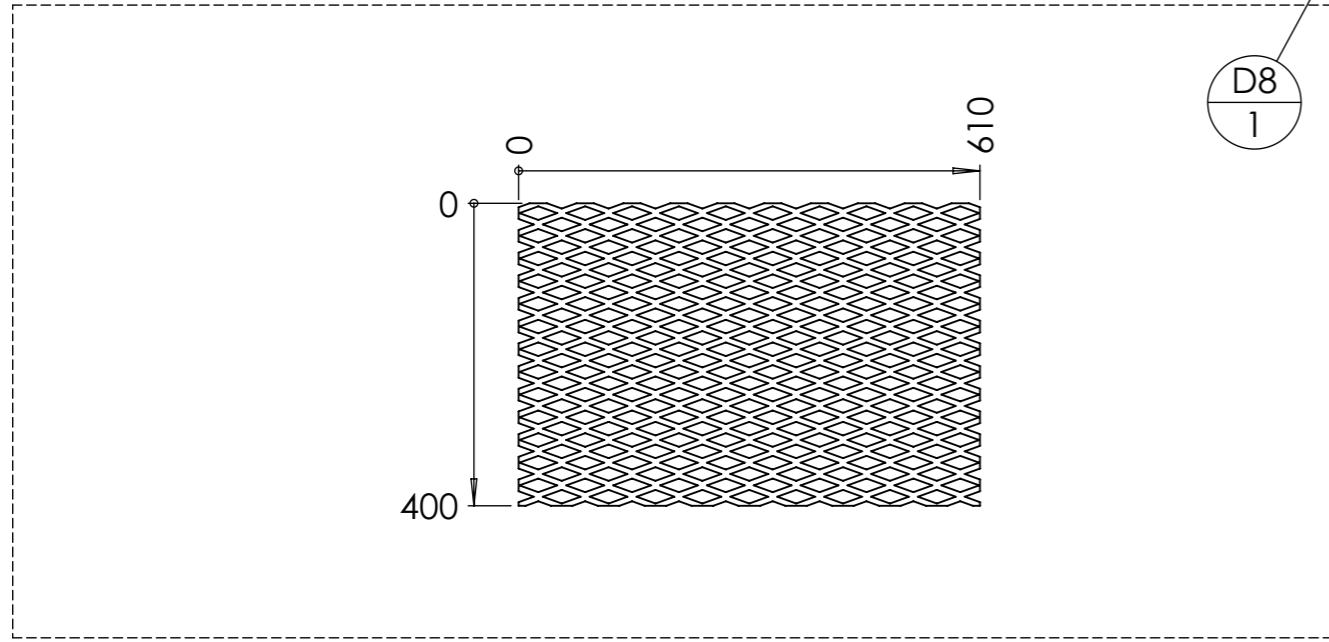
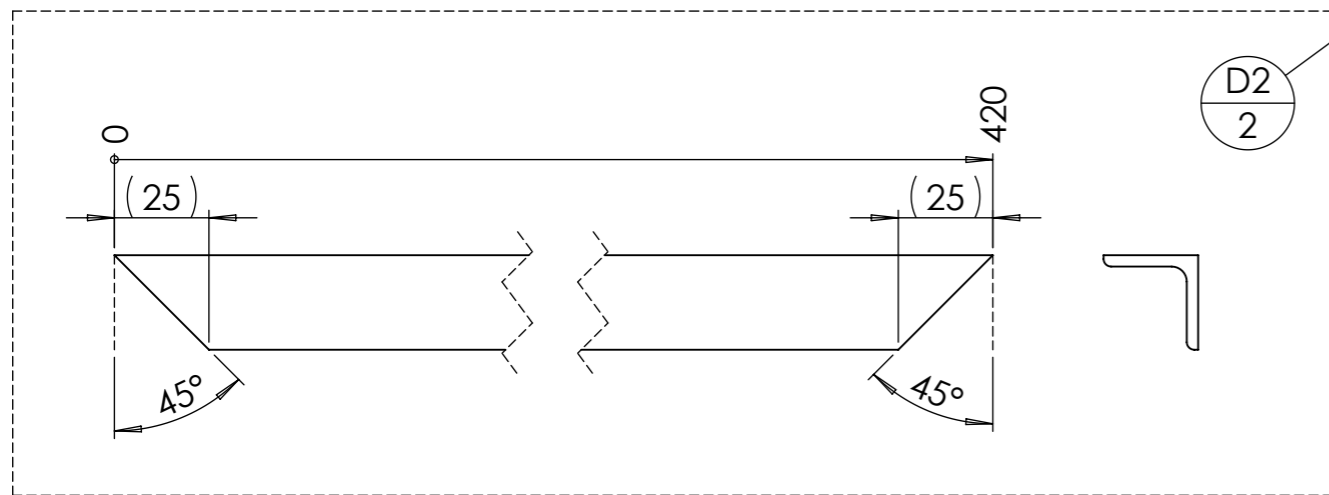
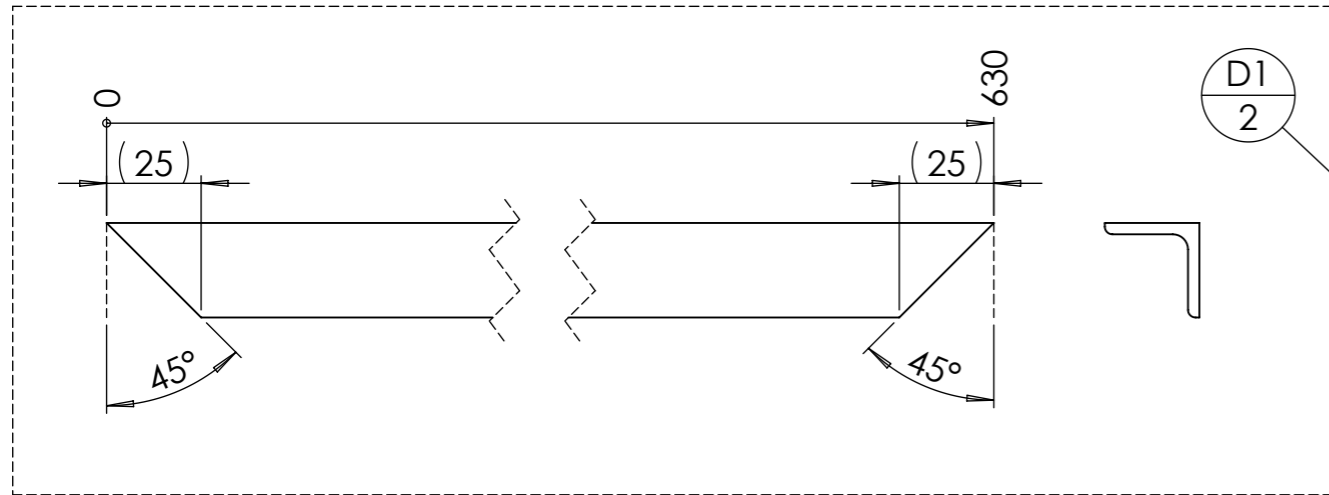


DÉTAIL I
ECHELLE 1 : 2

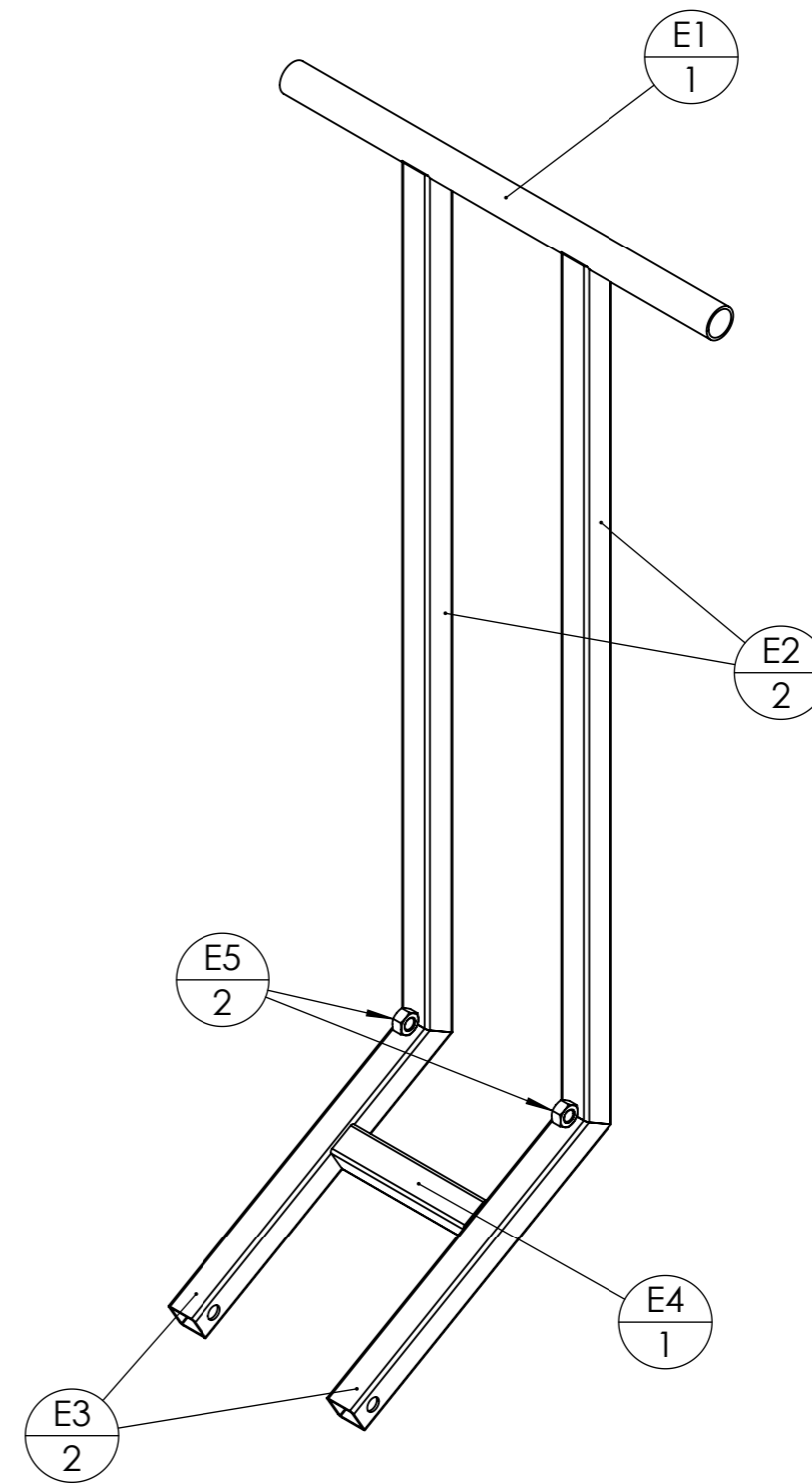


COUPE J-J



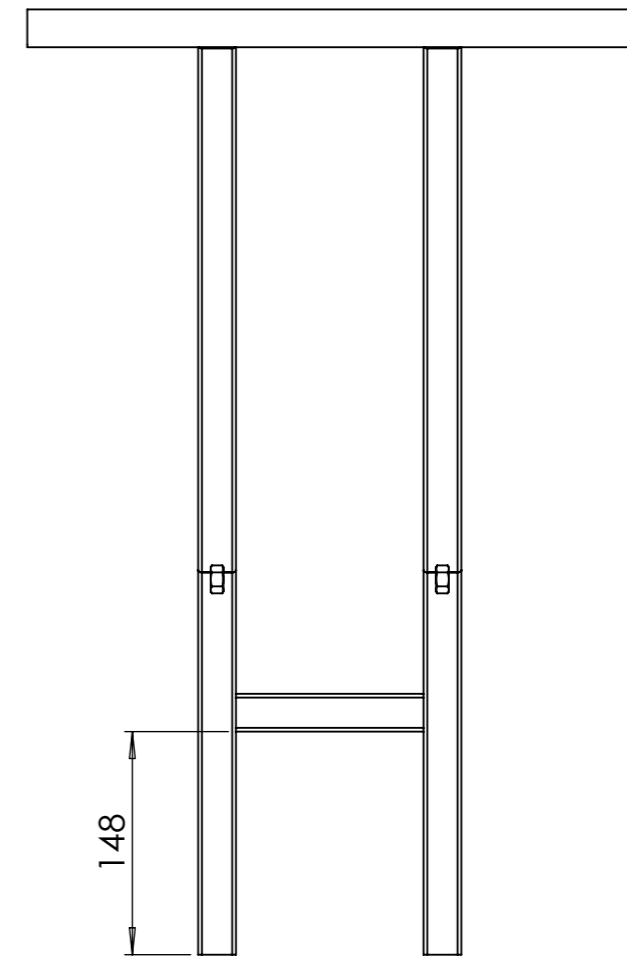
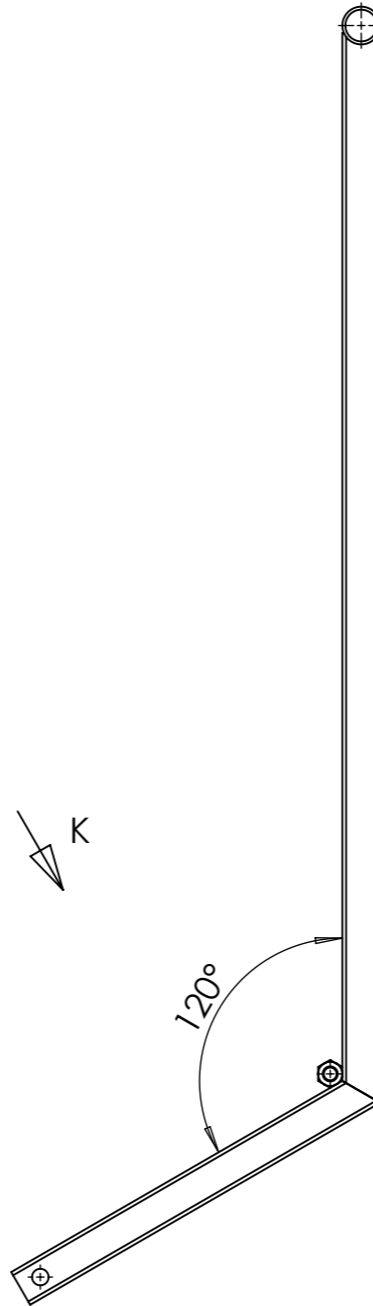
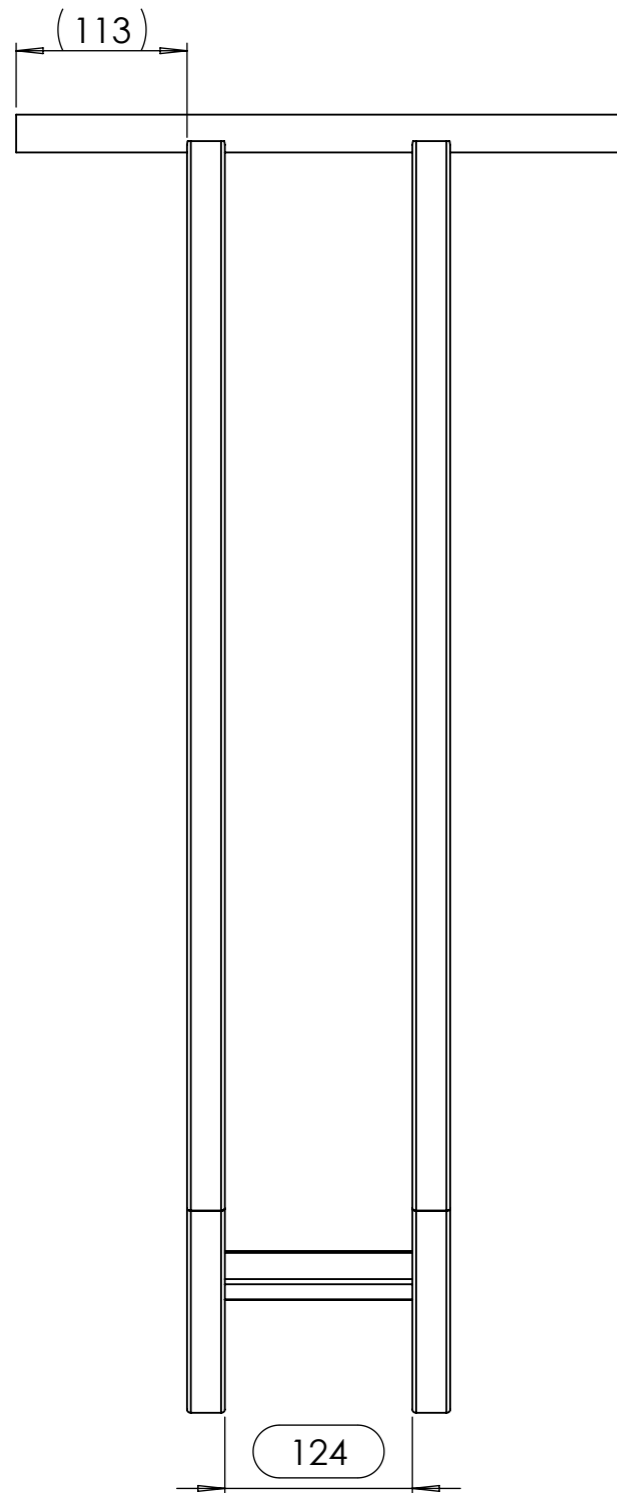


| | | | | | |
|---------|------------------|---------|-----|----------------|---|
| Outil | La Feignasse | | | |  |
| Date | 01/02/2024 | Version | 1.3 | page n° 17/ 25 | |
| Feuille | E - Nomenclature | | | | |

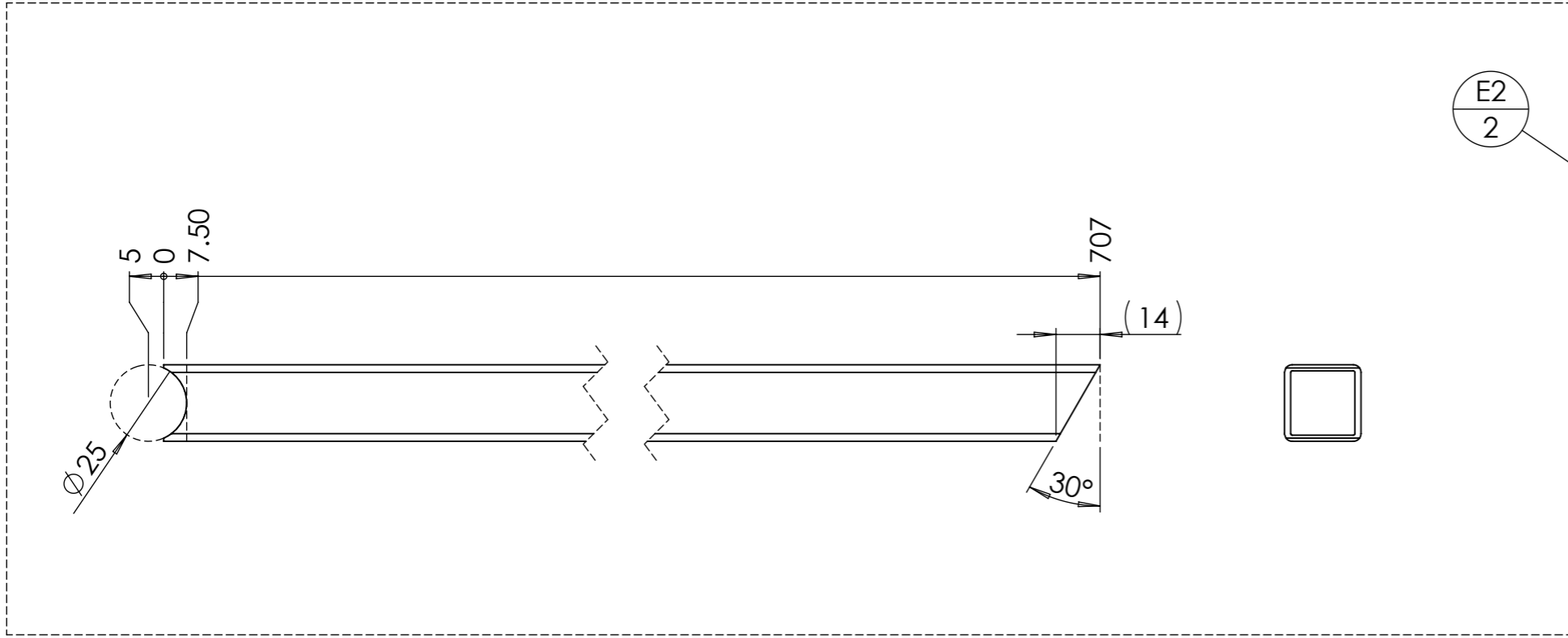


| repère | Désignation | ANGLE1 | ANGLE2 | p | LONGUEUR | Quantité |
|--------|-------------------|--------|--------|----------|----------|----------|
| E1 | tube rond 25 x 2 | 0° | 0° | | 400 | 1 |
| E2 | Tube carré 25 x 2 | 30° | 0° | | 707 | 2 |
| E3 | Tube carré 25 x 2 | 0° | 30° | 2x Ø11 ; | 267 | 2 |
| E4 | Tube carré 25 x 2 | 0° | 0° | | 124 | 1 |
| E5 | Ecrou M10 brut | | | | STD | 2 |

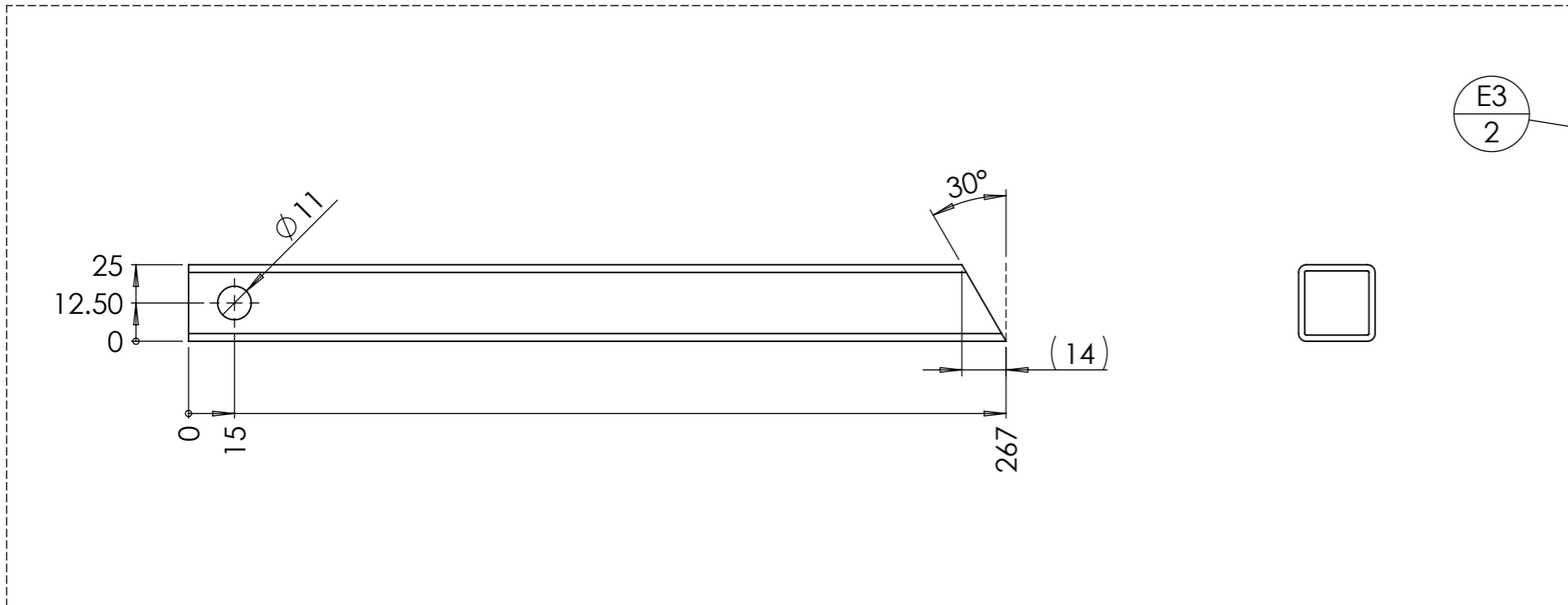
| | | | | | |
|---------|----------------|---------|-----|---|-----------------|
| Outil | La Feignasse | | |  | |
| Date | 01/02/2024 | Version | 1.3 | | page n° 18 / 25 |
| Feuille | E - Assemblage | | | | |



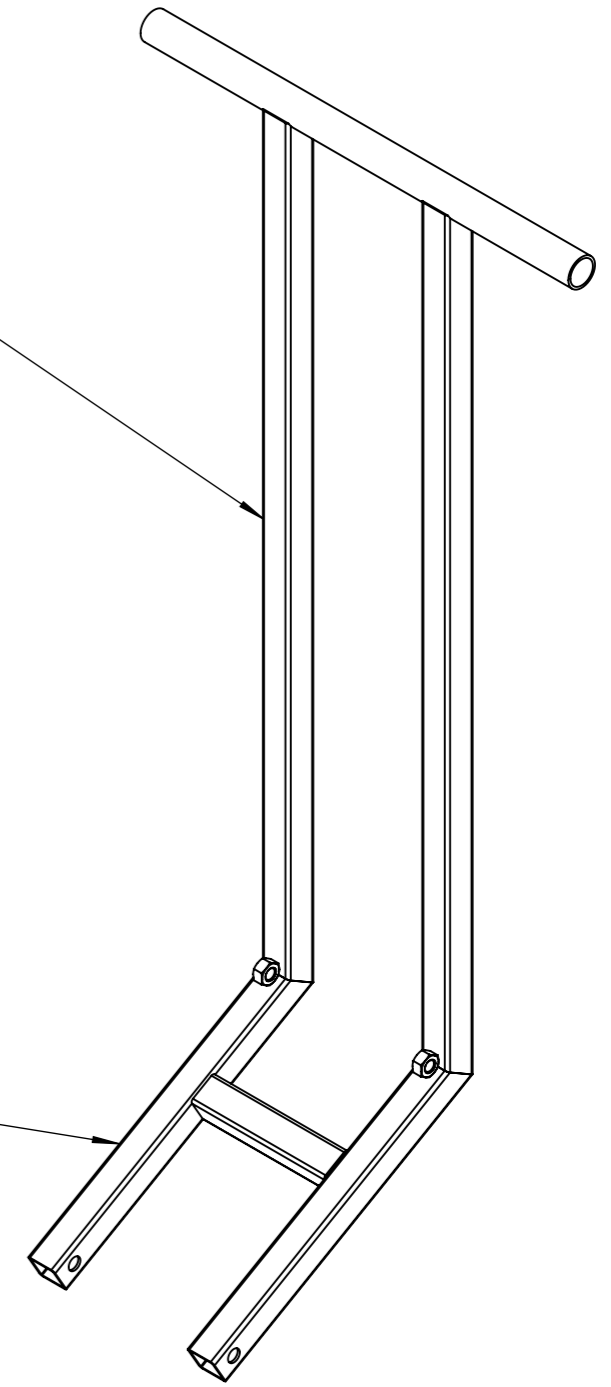
Astuce pour assurer le bon écartement :
 Assembler les deux bras (**E2** , **E3**) du manche, puis pointer l'ensemble monté sur le chassis.

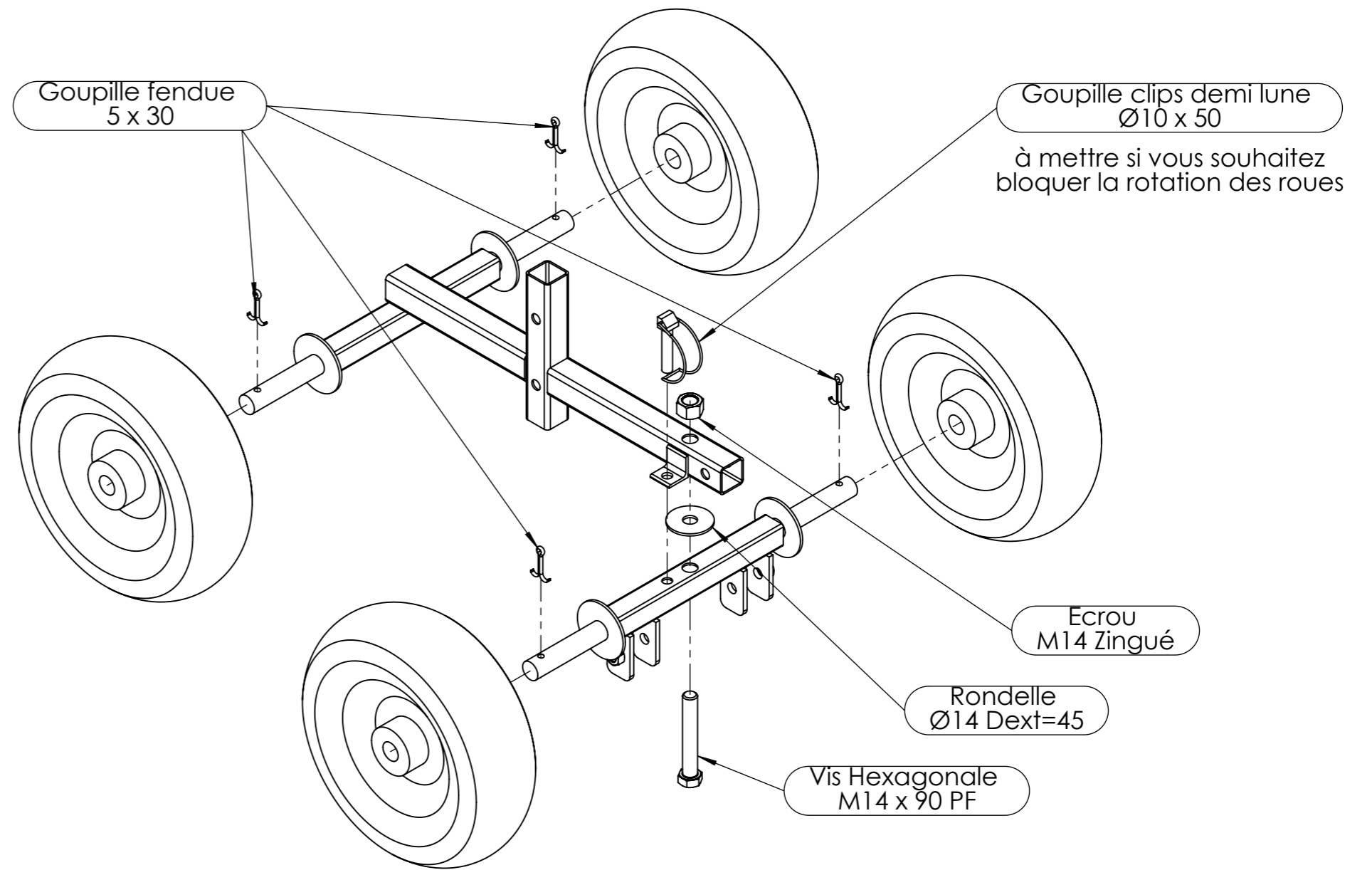
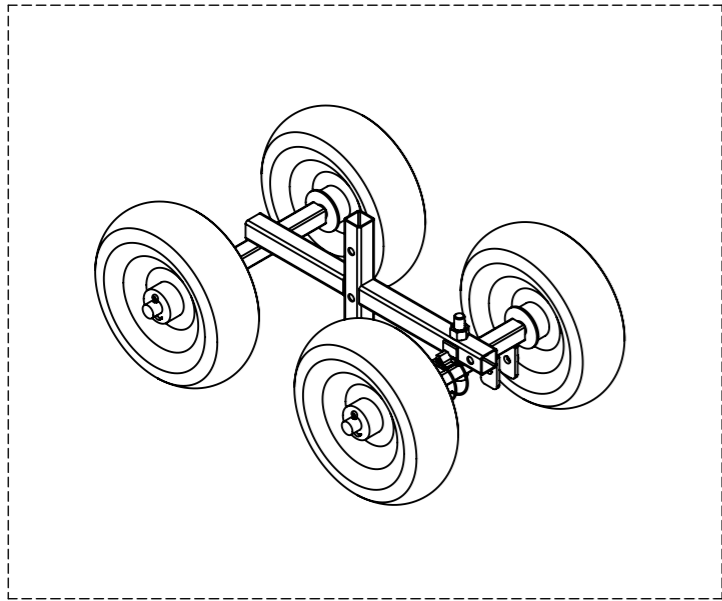


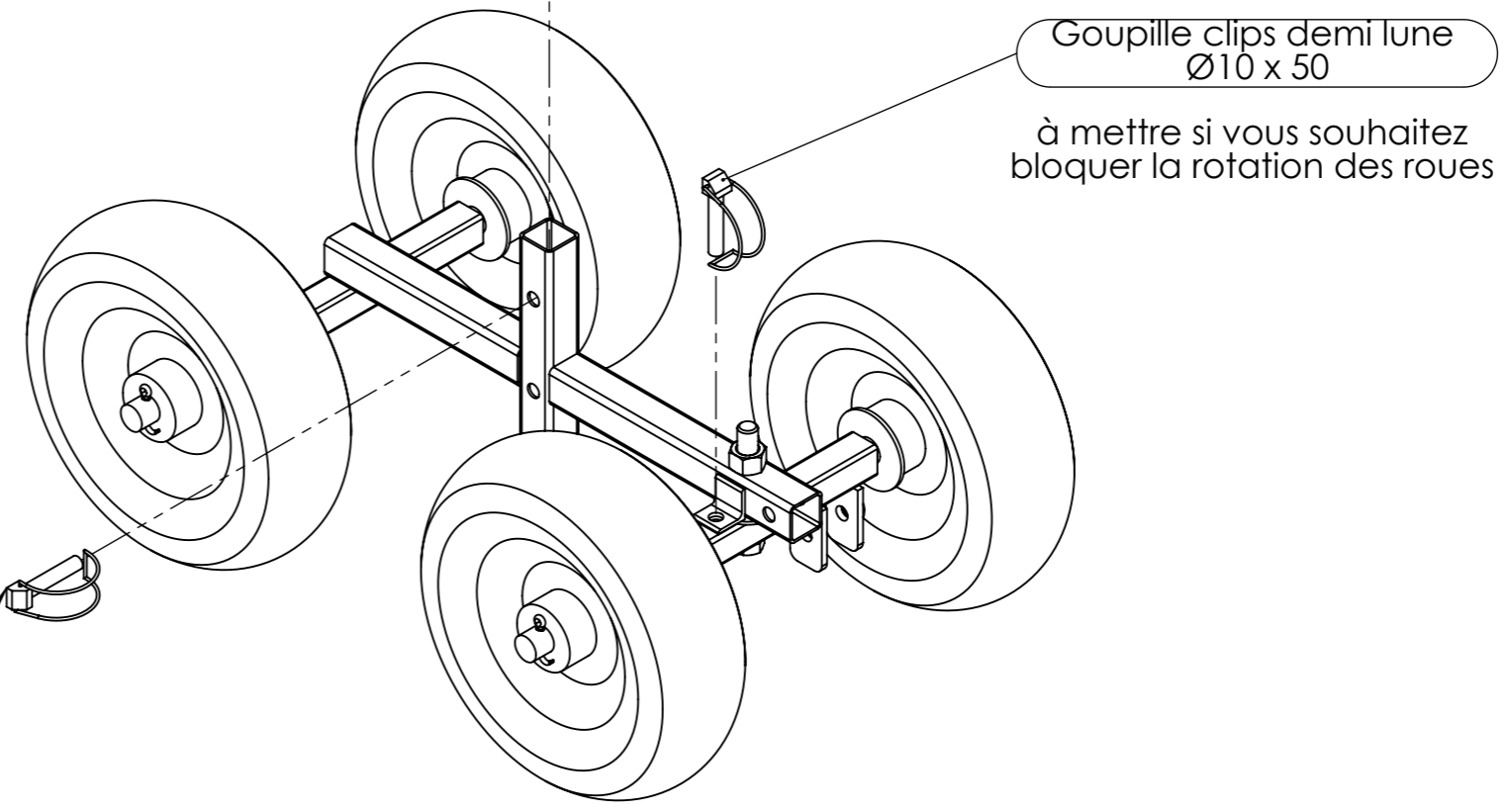
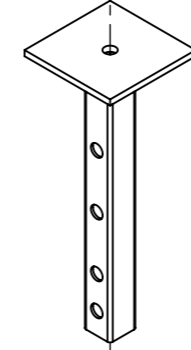
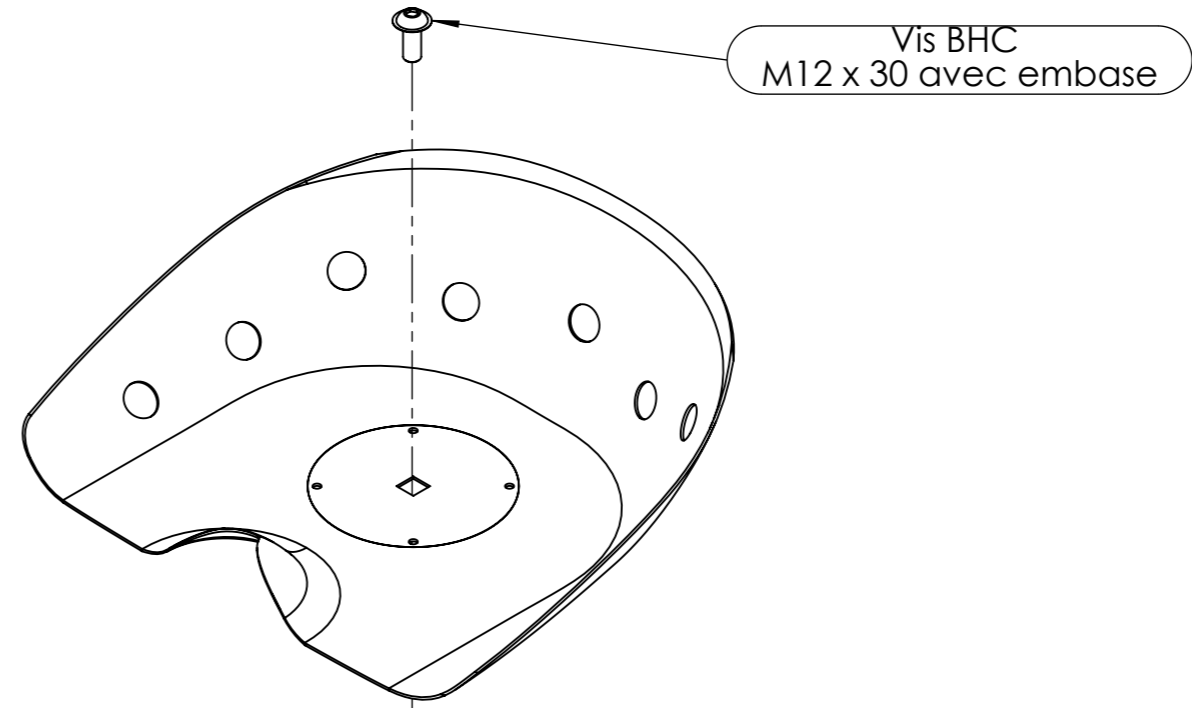
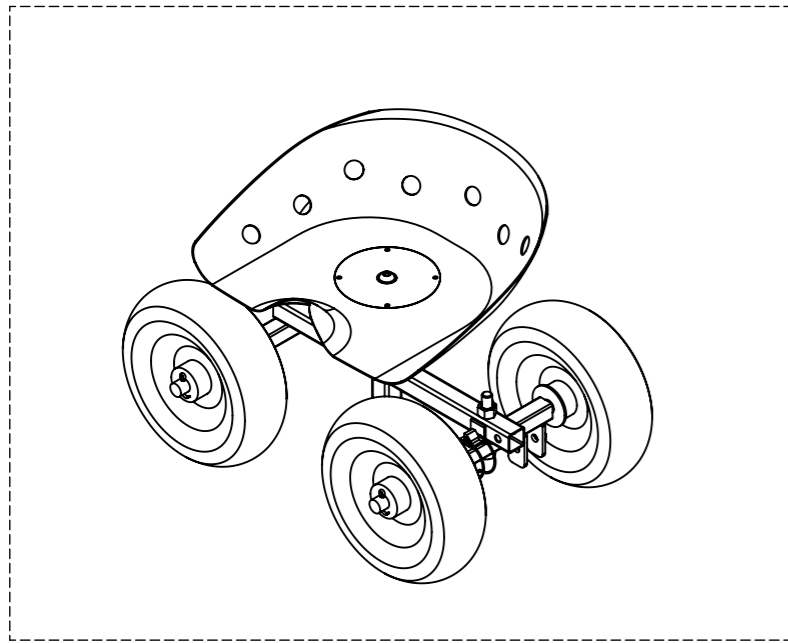
E2
2



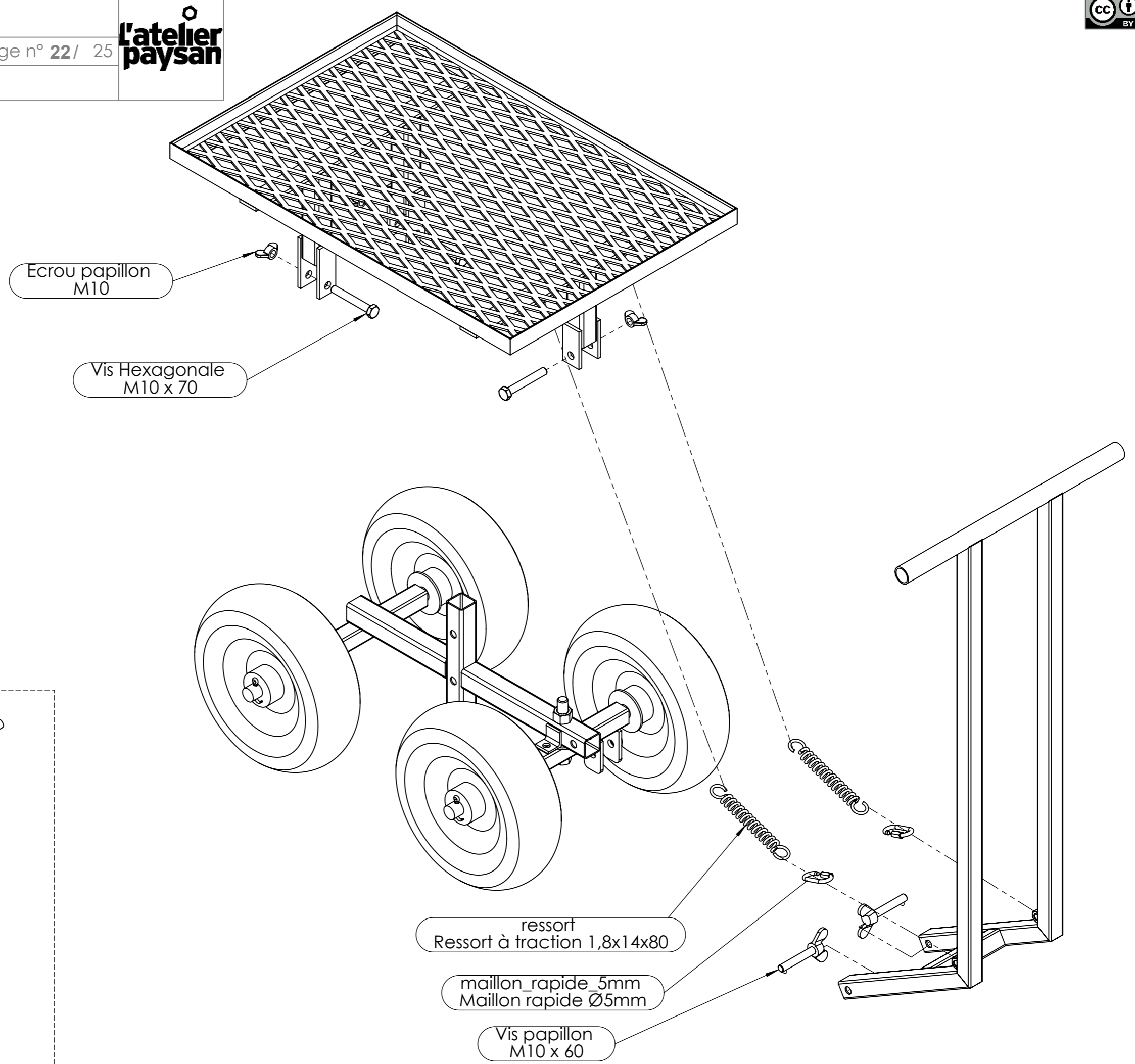
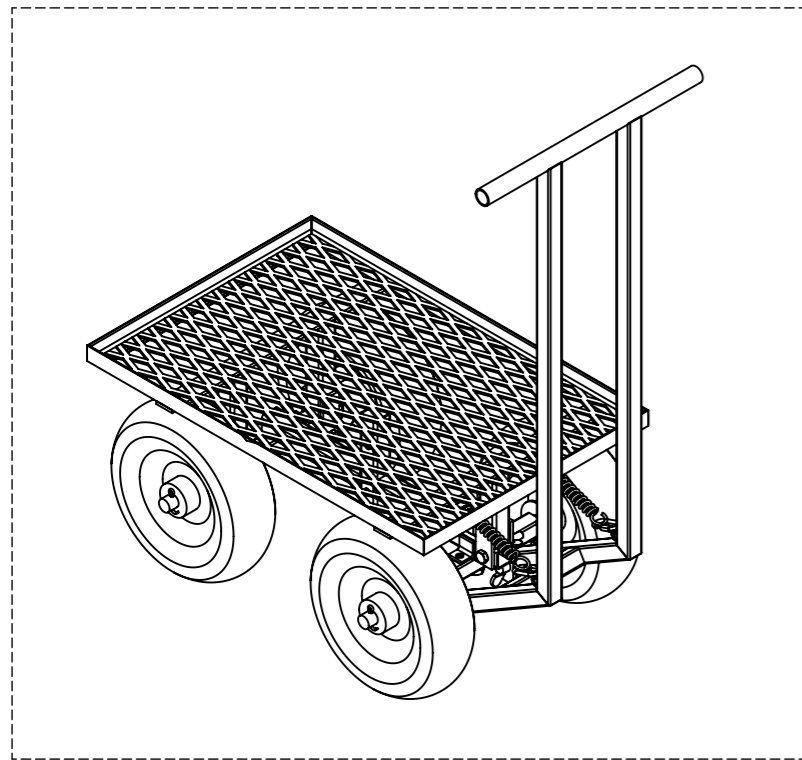
E3
2




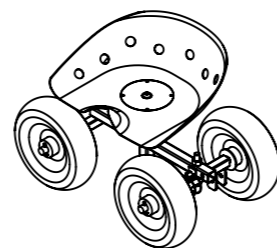




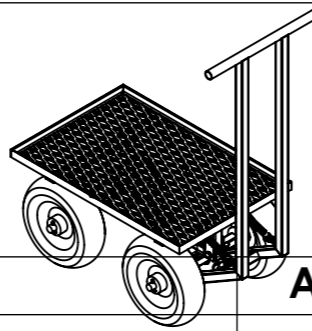
Goupille clips demi lune
Ø10 x 50




| | | | | | |
|---------|-----------------------------|---------|-----|---|-----------------|
| Outil | La Feignasse | | |  | |
| Date | 01/02/2024 | Version | 1.3 | | page n° 23 / 25 |
| Feuille | Fournitures globales- siège | | | | |



| repère | Désignation | ANGLE1 | ANGLE2 | p | LONGUEUR | Quantité |
|--------------------------|-----------------------------------|--------|--------|---------------------|----------|----------|
| A1 | Tube carré 30 x 2 | 0° | 0° | 4x Ø11 - | 165 | 1 |
| A2 | Tube carré 30 x 2 | 0° | 0° | | 183 | 1 |
| A3 | Tube carré 30 x 2 | 0° | 0° | 2x Ø11 - 2x Ø15 - | 228 | 1 |
| A4 | Tube carré 25 x 2 | 0° | 0° | | 220 | 1 |
| A5 | étiré rond Ø20 | 0° | 0° | 1x Ø6 - | 150 | 2 |
| A6 | Rondelle Ø20 série LLU | | | | STD | 2 |
| A7 | Cornière 25 x 25 x 3 | 0° | 0° | 1x Ø10,2 - | 25 | 1 |
| B1 | Tube carré 25 x 2 | 0° | 0° | 2x Ø15 - 2x Ø10,2 - | 220 | 1 |
| B2 | étiré rond Ø20 | 0° | 0° | 1x Ø6 - | 150 | 2 |
| B3 | Fer plat 30 x 5 | 0° | 0° | 1x Ø11 - | 52 | 4 |
| B4 | Rondelle Ø20 série LLU | | | | STD | 2 |
| B5 | Ecrou M10 brut | | | | STD | 2 |
| C1 | Tube carré 25 x 2 | 0° | 0° | 8x Ø11 ; | 220 | 1 |
| C2 | Fer plat 80 x 5 | 0° | 0° | 1x Ø10,2 ; | 80 | 1 |
| Ecrou | Ecrou M14 Zingué | | | | STD | 1 |
| Goupille clips demi lune | Goupille clips demi lune Ø10 x 50 | | | | STD | 2 |
| Goupille fendue | Goupille fendue 5 x 30 | | | | STD | 4 |
| Rondelle | Rondelle Ø14 série LLU | | | | STD | 1 |
| Roue gonflable | Roue gonflable Ø260 ; L85 | | | | STD | 4 |
| Vis BHC | Vis BHC avec embase M12 x 30 10.9 | | | | STD | 1 |
| Vis Hexagonale | Vis hexagonale M14 x 90 PF | | | | STD | 1 |
| siège_cuvette | Siège cuvette | | | | STD | 1 |



| repère | Désignation | ANGLE1 | ANGLE2 | p | LONGUEUR | Quantité |
|--------------------|-------------------------------|--------|--------|---------------------|----------|----------|
| A1 | Tube carré 30 x 2 | 0° | 0° | 4x Ø11 - | 165 | 1 |
| A2 | Tube carré 30 x 2 | 0° | 0° | | 183 | 1 |
| A3 | Tube carré 30 x 2 | 0° | 0° | 2x Ø11 - 2x Ø15 - | 228 | 1 |
| A4 | Tube carré 25 x 2 | 0° | 0° | | 220 | 1 |
| A5 | étiré rond Ø20 | 0° | 0° | 1x Ø6 - | 150 | 2 |
| A6 | Rondelle Ø20 série LLU | | | | STD | 2 |
| A7 | Cornière 25 x 25 x 3 | 0° | 0° | 1x Ø10,2 - | 25 | 1 |
| B1 | Tube carré 25 x 2 | 0° | 0° | 2x Ø15 - 2x Ø10,2 - | 220 | 1 |
| B2 | étiré rond Ø20 | 0° | 0° | 1x Ø6 - | 150 | 2 |
| B3 | Fer plat 30 x 5 | 0° | 0° | 1x Ø11 - | 52 | 4 |
| B4 | Rondelle Ø20 série LLU | | | | STD | 2 |
| B5 | Ecrou M10 brut | | | | STD | 6 |
| D1 | Cornière 25 x 25 x 3 | 45° | 45° | | 630 | 2 |
| D2 | Cornière 25 x 25 x 3 | 45° | 45° | | 420 | 2 |
| D3 | Fer plat 30 x 5 | 0° | 0° | | 420 | 2 |
| D4 | Tube carré 30 x 2 | 0° | 0° | | 115 | 1 |
| D5 | Tube carré 30 x 2 | 0° | 0° | | 145 | 2 |
| D6 | Fer plat 30 x 5 | 0° | 0° | 1x Ø11 ; | 60 | 2 |
| D7 | Fer plat 30 x 5 | 0° | 0° | 1x Ø11 ; | 80 | 4 |
| D8 | Métal déployé 62 x 30 - 6 x 3 | | | | STD | 1 |
| E1 | tube rond 25 x 2 | 0° | 0° | | 400 | 1 |
| E2 | Tube carré 25 x 2 | 30° | 0° | | 707 | 2 |
| E3 | Tube carré 25 x 2 | 0° | 30° | 2x Ø11 ; | 267 | 2 |
| E4 | Tube carré 25 x 2 | 0° | 0° | | 124 | 1 |
| Ecrou | Ecrou M14 Zingué | | | | STD | 1 |
| Ecrou papillon | Ecrou papillon M10 | | | | STD | 3 |
| Goupille fendue | Goupille fendue 5 x 30 | | | | STD | 4 |
| Rondelle | Rondelle Ø14 série LLU | | | | STD | 1 |
| Roue gonflable | Roue gonflable Ø260 ; L85 | | | | STD | 4 |
| Vis Hexagonale | Vis hexagonale M14 x 90 PF | | | | STD | 1 |
| Vis Hexagonale | vis hexagonale M10 x 70 | | | | STD | 3 |
| Vis papillon | Vis papillon M10 x 60 | | | | STD | 2 |
| maillon_rapide_5mm | Maillon rapide Ø5mm | | | | STD | 2 |
| ressort | Ressort à traction 1,8x14x80 | | | | STD | 2 |

| | | | | | |
|---------|---------------|---------|-----|---|-----------------|
| Outil | La Feignasse | | |  | |
| Date | 01/02/2024 | Version | 1.3 | | page n° 25 / 25 |
| Feuille | Contributions | | | | |



Les travaux pour réaliser la présente mise à jour ont bénéficié d'une contribution des collectivités publiques :



Cette action est cofinancée par le Fonds européen agricole pour le développement rural : l'Europe investit dans les zones rurales.



Cette mise à jour, comme les précédentes, a bénéficié de la contribution bénévole et décisive des nombreux(ses) paysan(ne)s, membres formels ou informels du collectif L'Atelier Paysan.