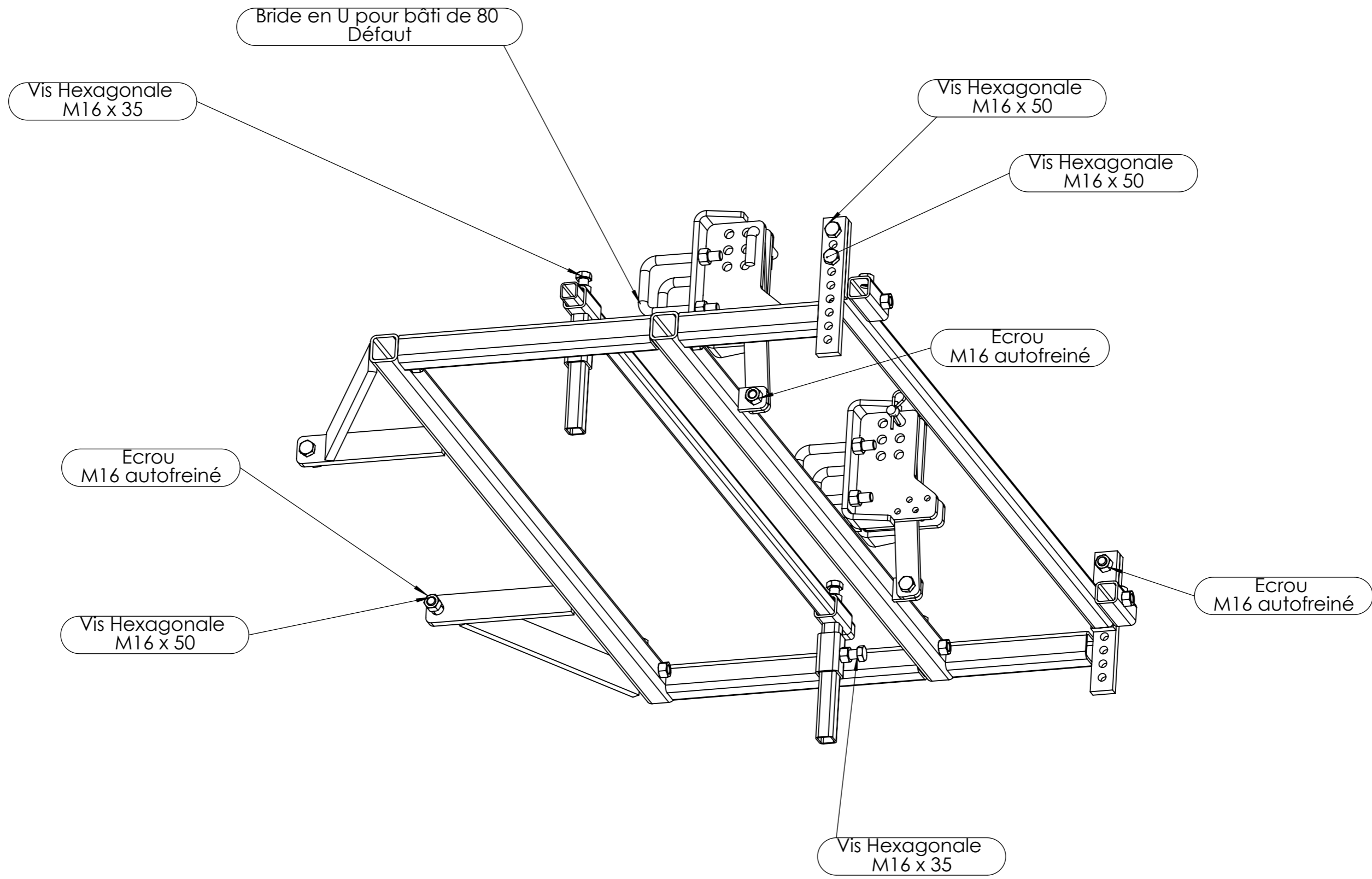
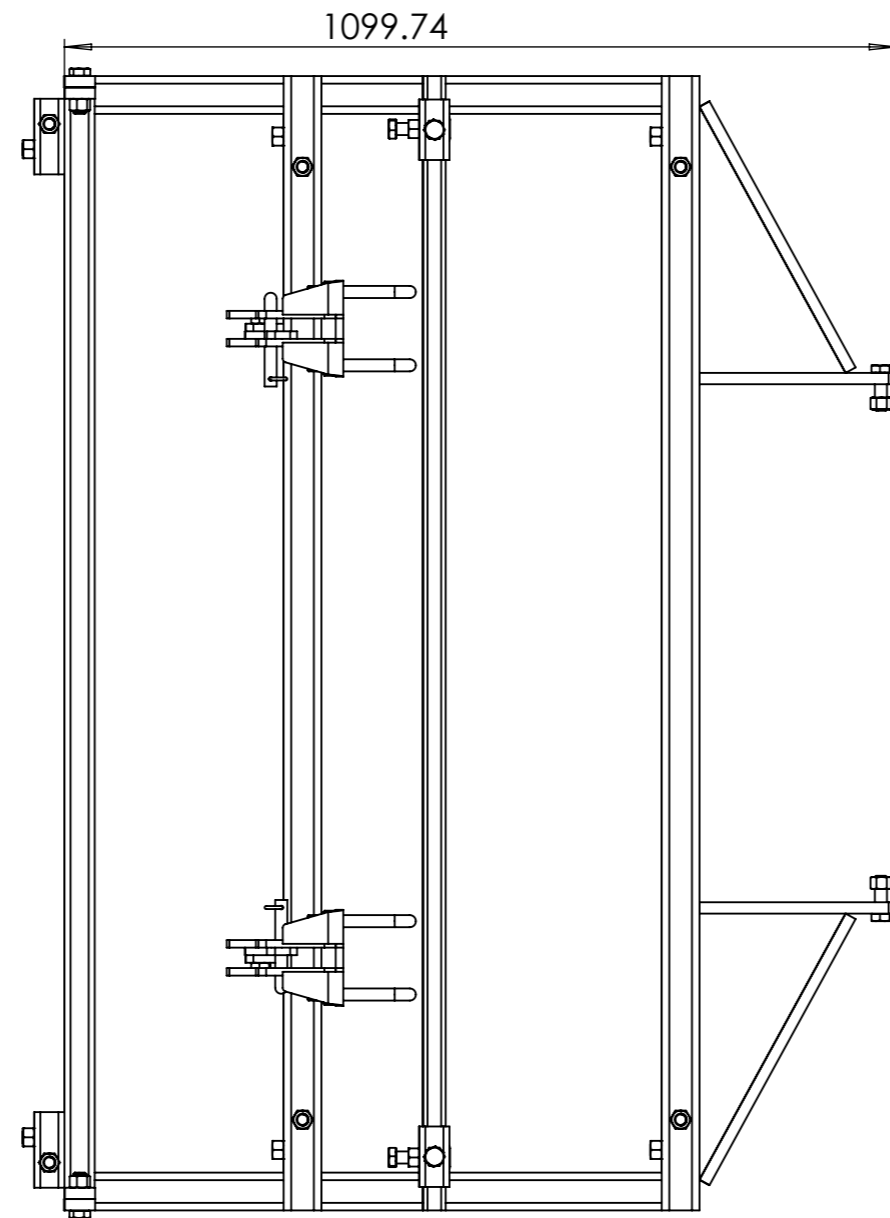
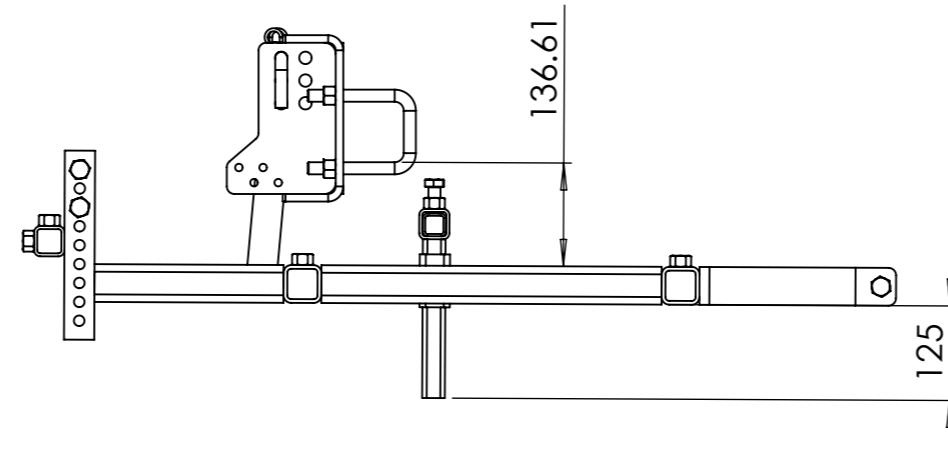


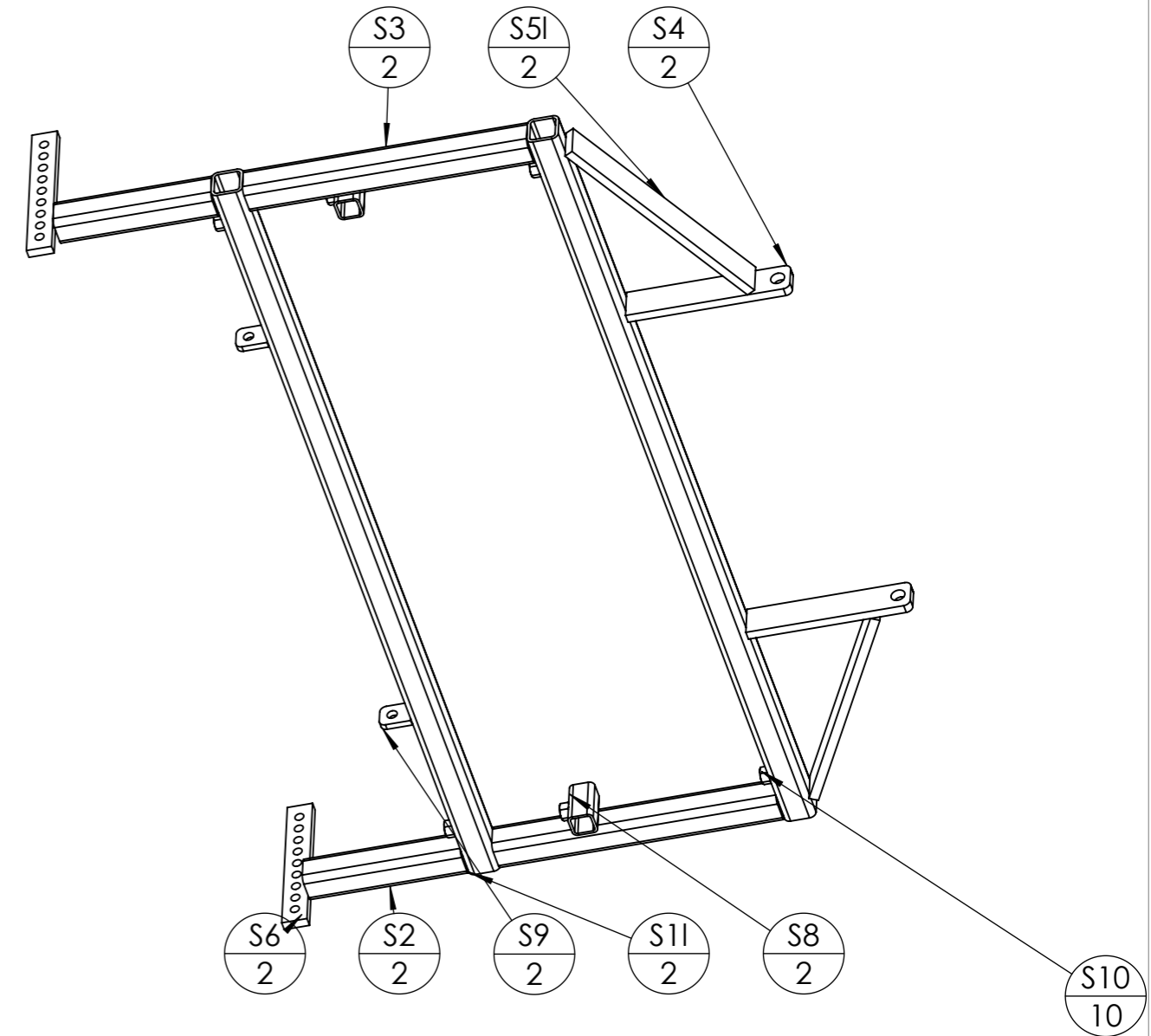
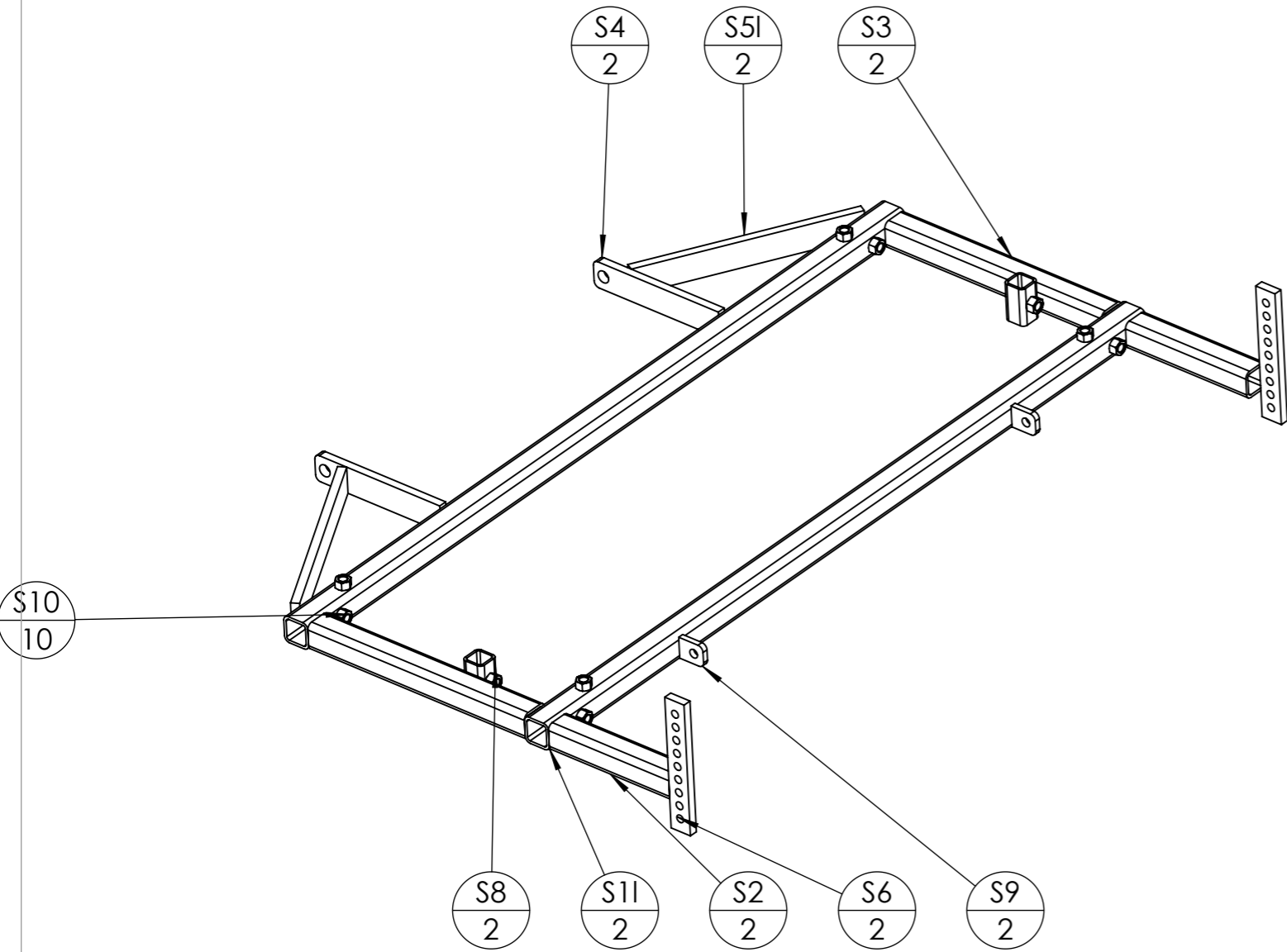
Pièce	Désignation	Qté
S	chassis bas large	1
V	barre porte dent	1
X	support barre porte cuillère	2
Y	barre porte cuillère	1
Z	bras support module bas	2
D	Bride viticole	2
Bride en U pour bâti de 80	Bride en U pour bâti de 80	4
Ecrou	Ecrou M16 autofreiné	16
Vis Hexagonale	Vis hexagonale M16 x 35	6
Vis Hexagonale	Vis hexagonale M16 x 50	6
Broche 1 - 16 L100	Broche pliée Ø16 - L100	2
Goupille épingle d'axe, 15x70 Ø4	Goupille épingle d'axe 15x70 Ø4	2



Outil	<b>Cadre ST large</b>		
Date	11/01/2023	Version	4.1
Feuille	page n° 3 / 13		
	<b>Vue générale(2)</b>		

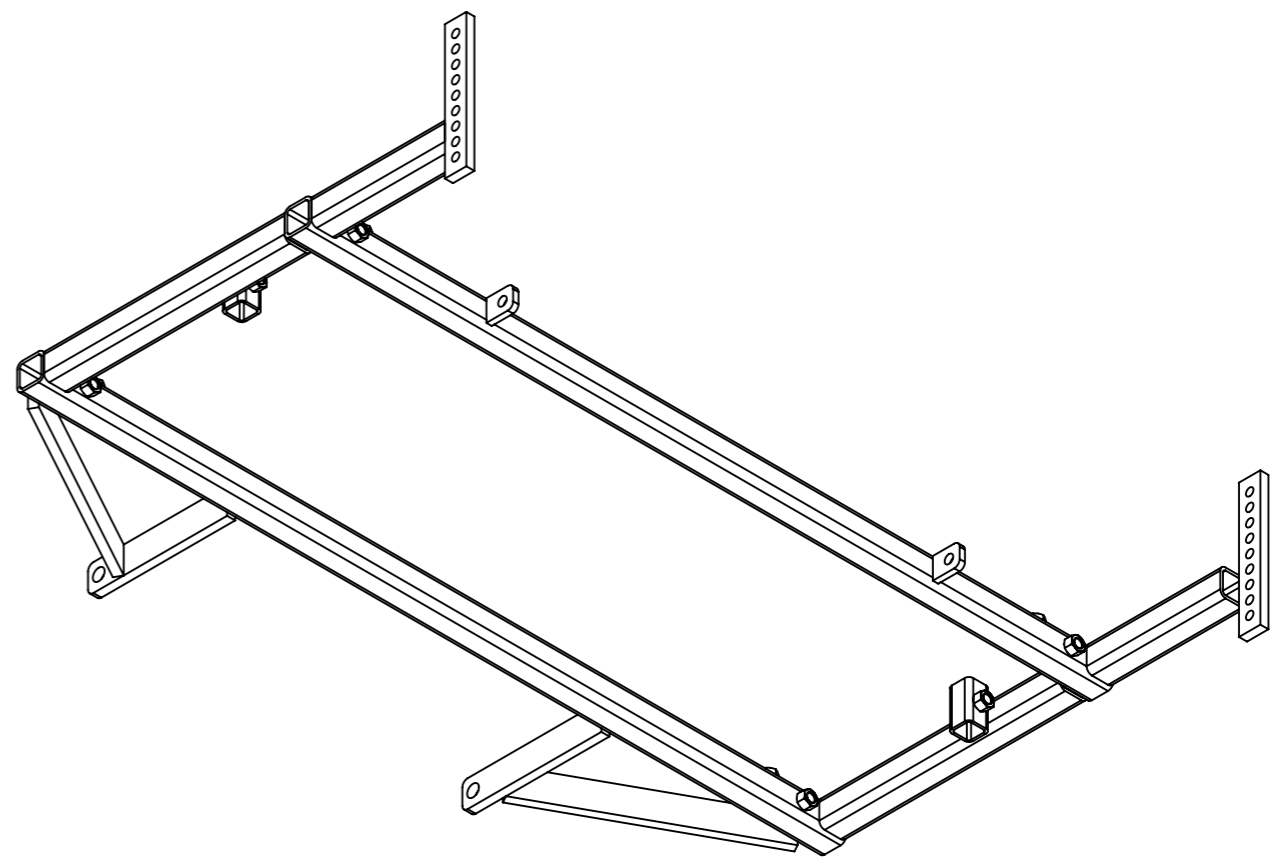
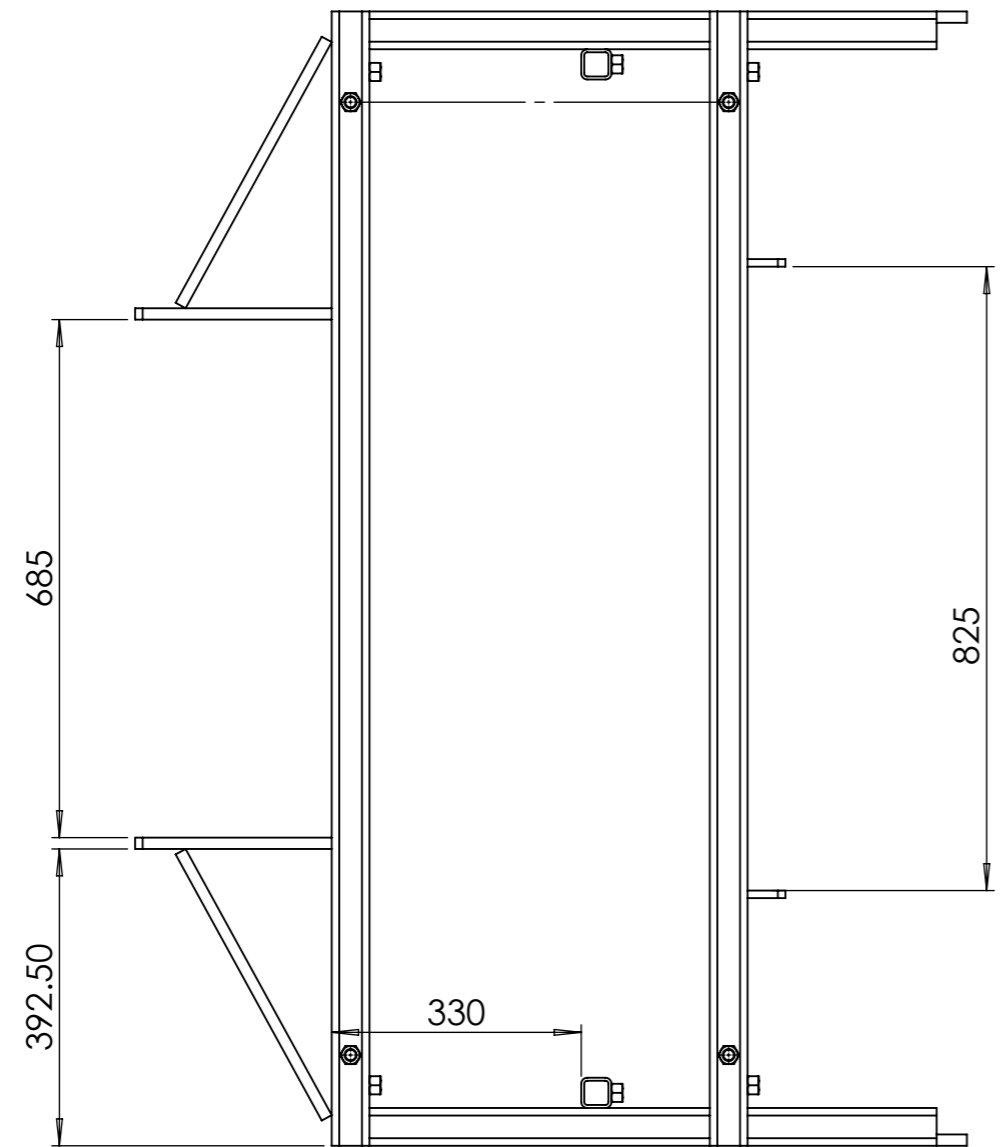
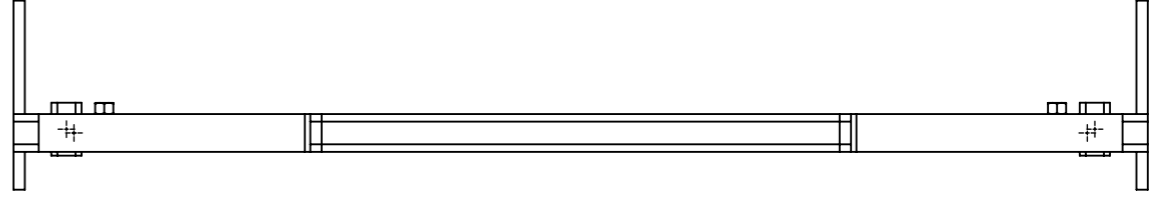
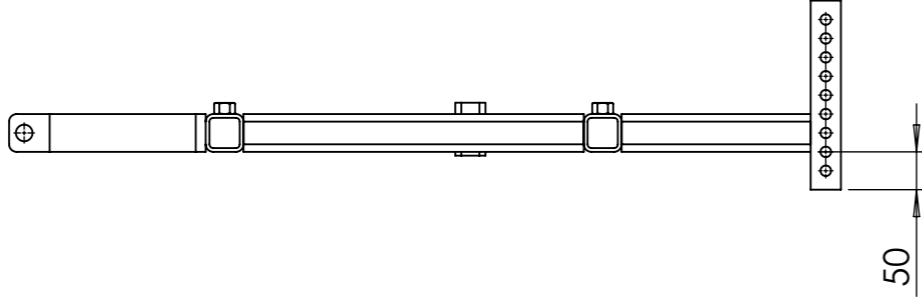
**L'atelier  
paysan**

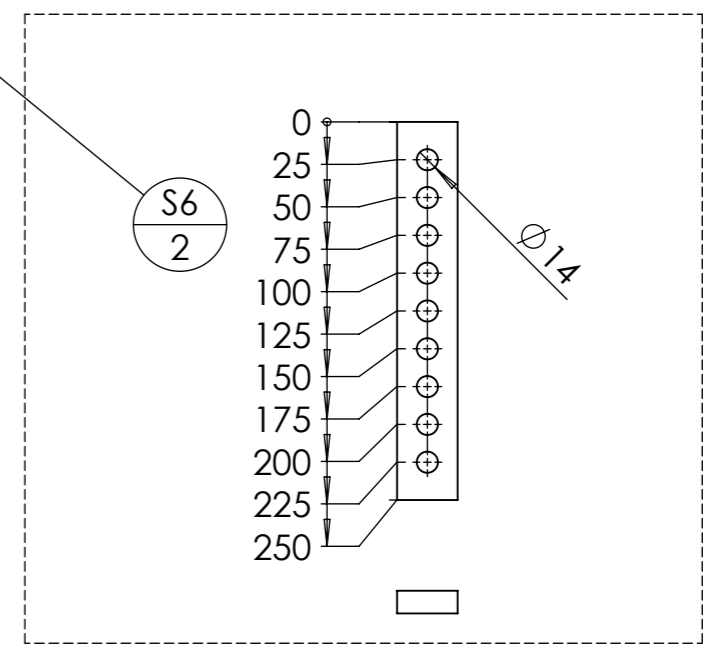
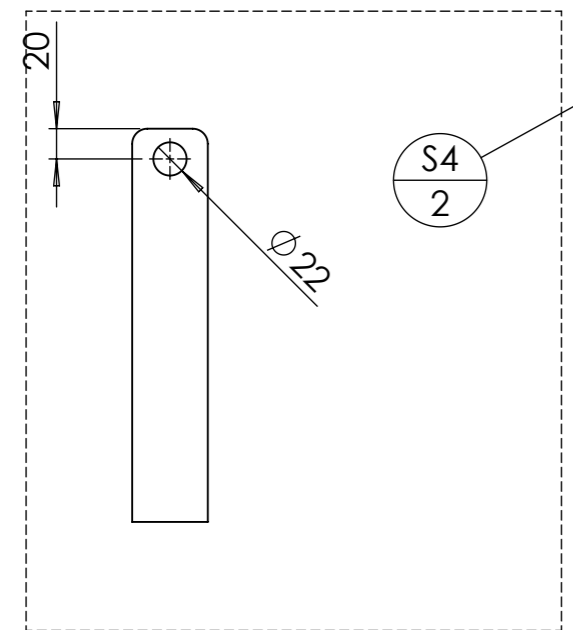
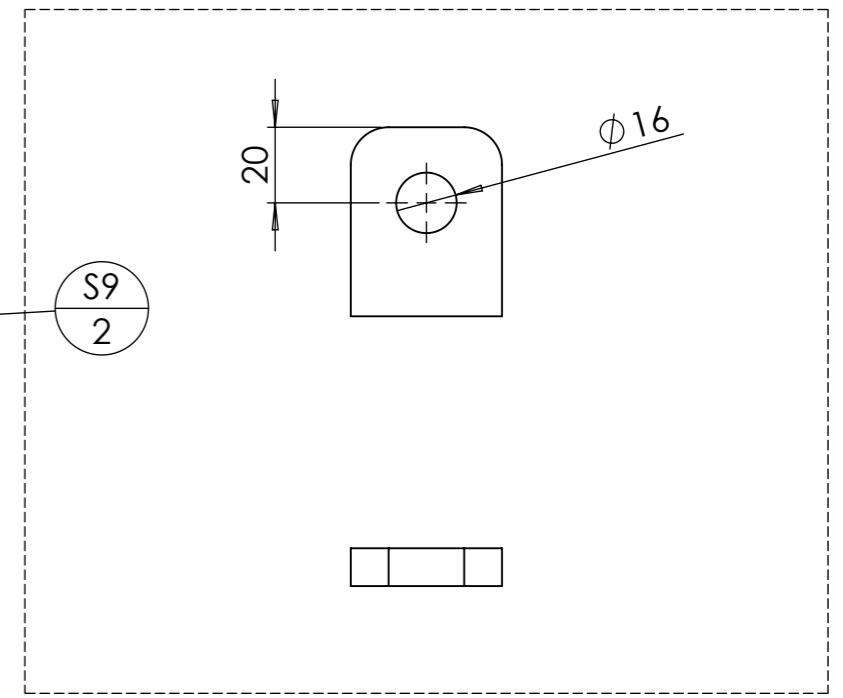
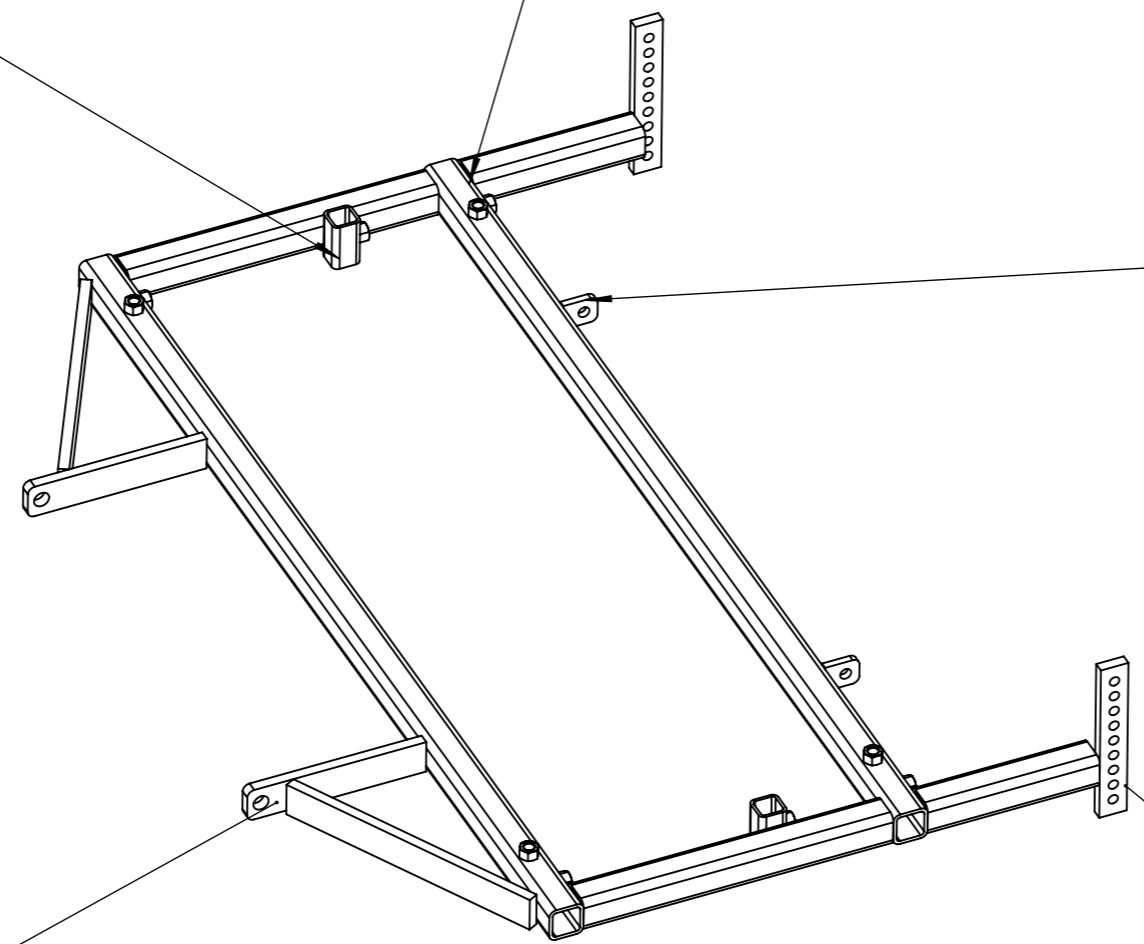
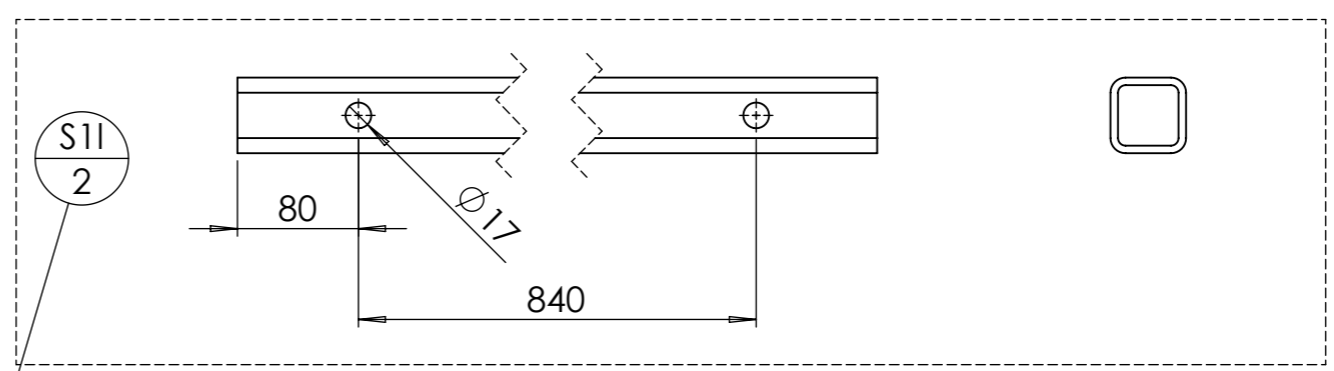
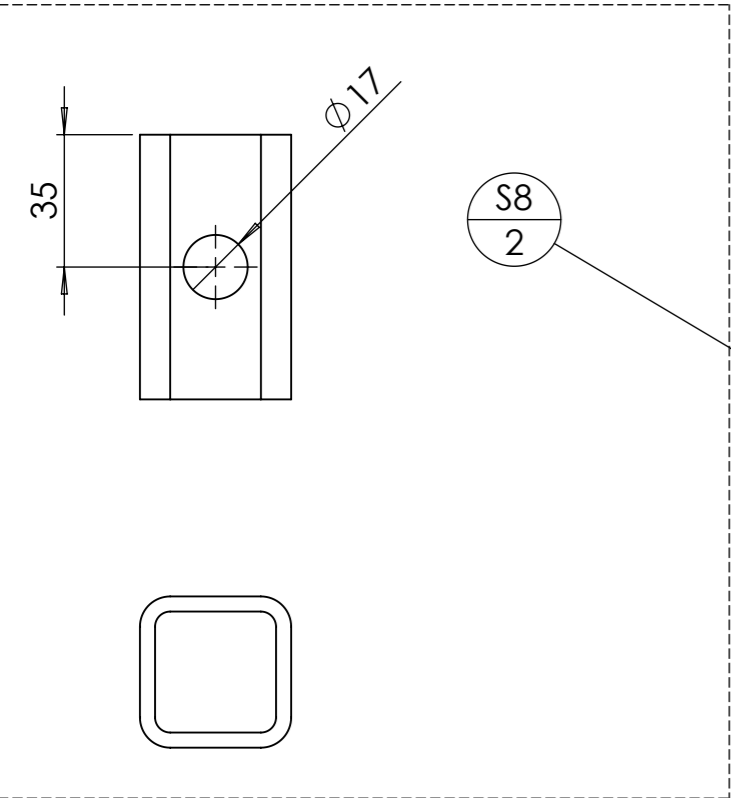




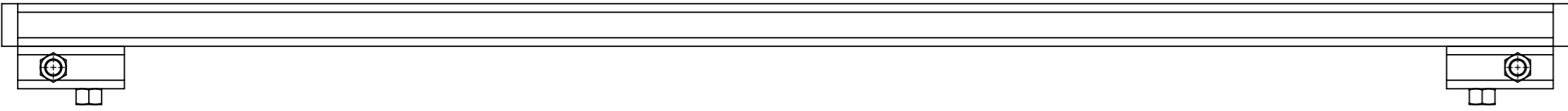
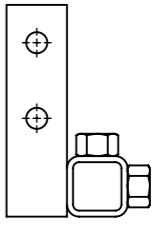
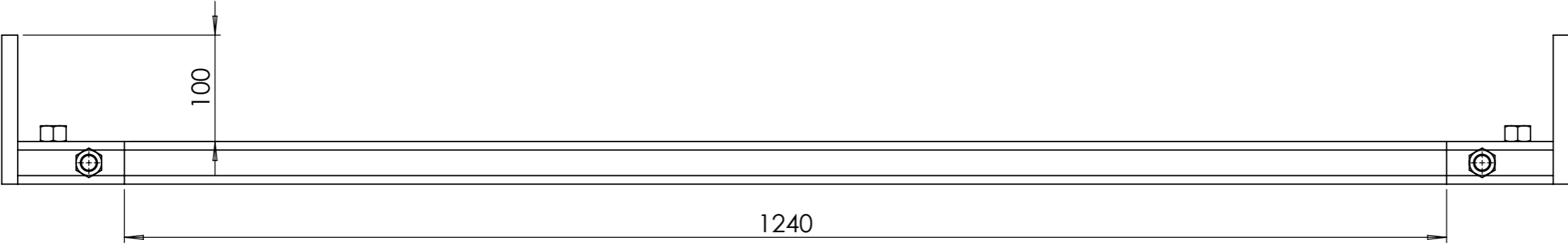
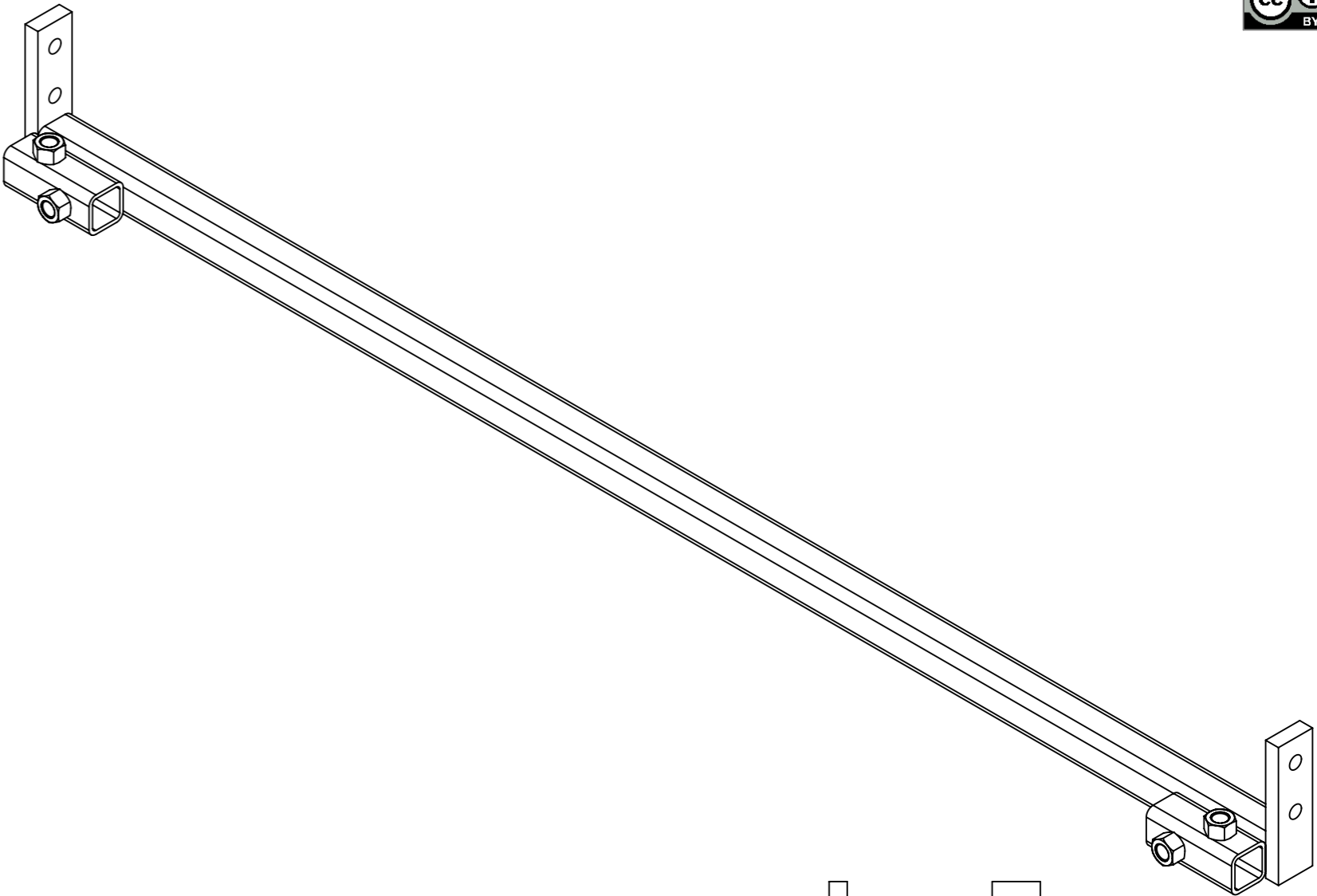
ID	Description	ANGLE1	ANGLE2	p	Longueur	Qté
S11	tube carré 50 x 5	0.00	0.00	4x Ø17 ;	1500	2
S2	tube carré 50 x 5	0.00	0.00		250	2
S3	tube carré 50 x 5	0.00	0.00		450	2
S4	fer plat 50 x 15	0.00	0.00	1x Ø22 ;	260	2
S5l	fer plat 50 x 15	0.00	0.00		401.4653	2
S6	Fer plat 40 x 15	0.00	0.00	9x Ø14 ;	250	2
S8	tube carré 40 x 4	0.00	0.00	1x Ø17 ;	70	2
S9	Fer plat 40 x 10	0.00	0.00	1x Ø16 ;	50	2
S10	Ecrou M16 brut					10

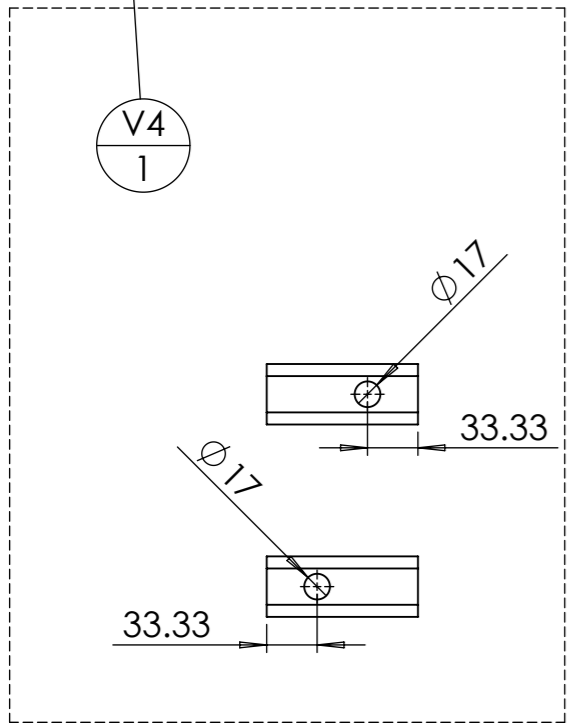
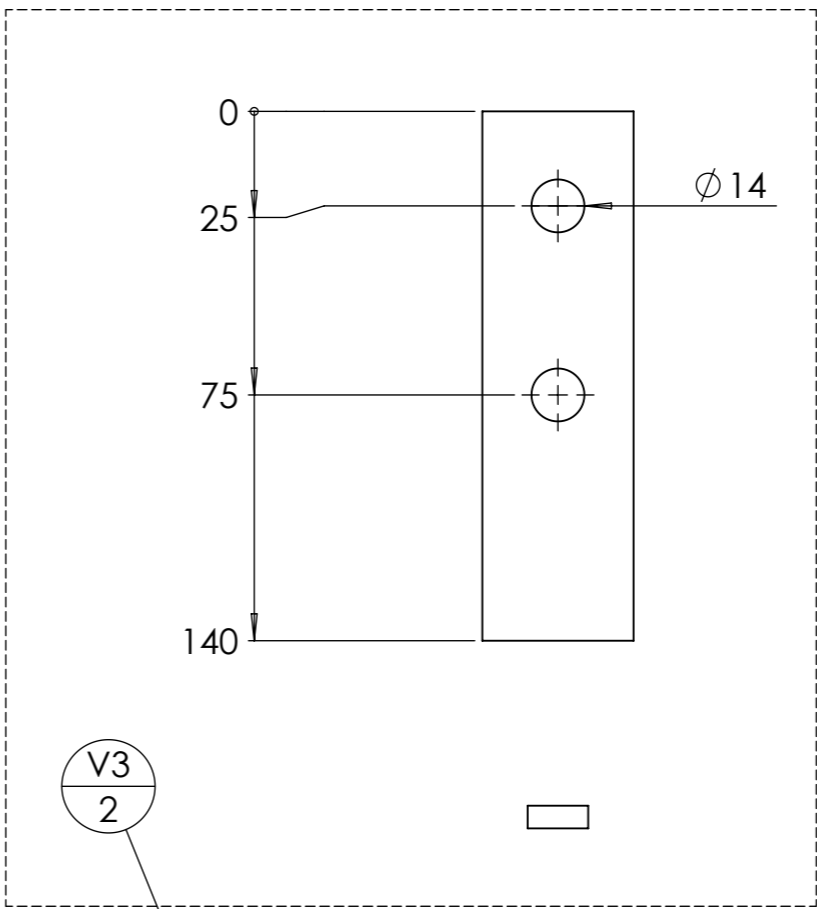
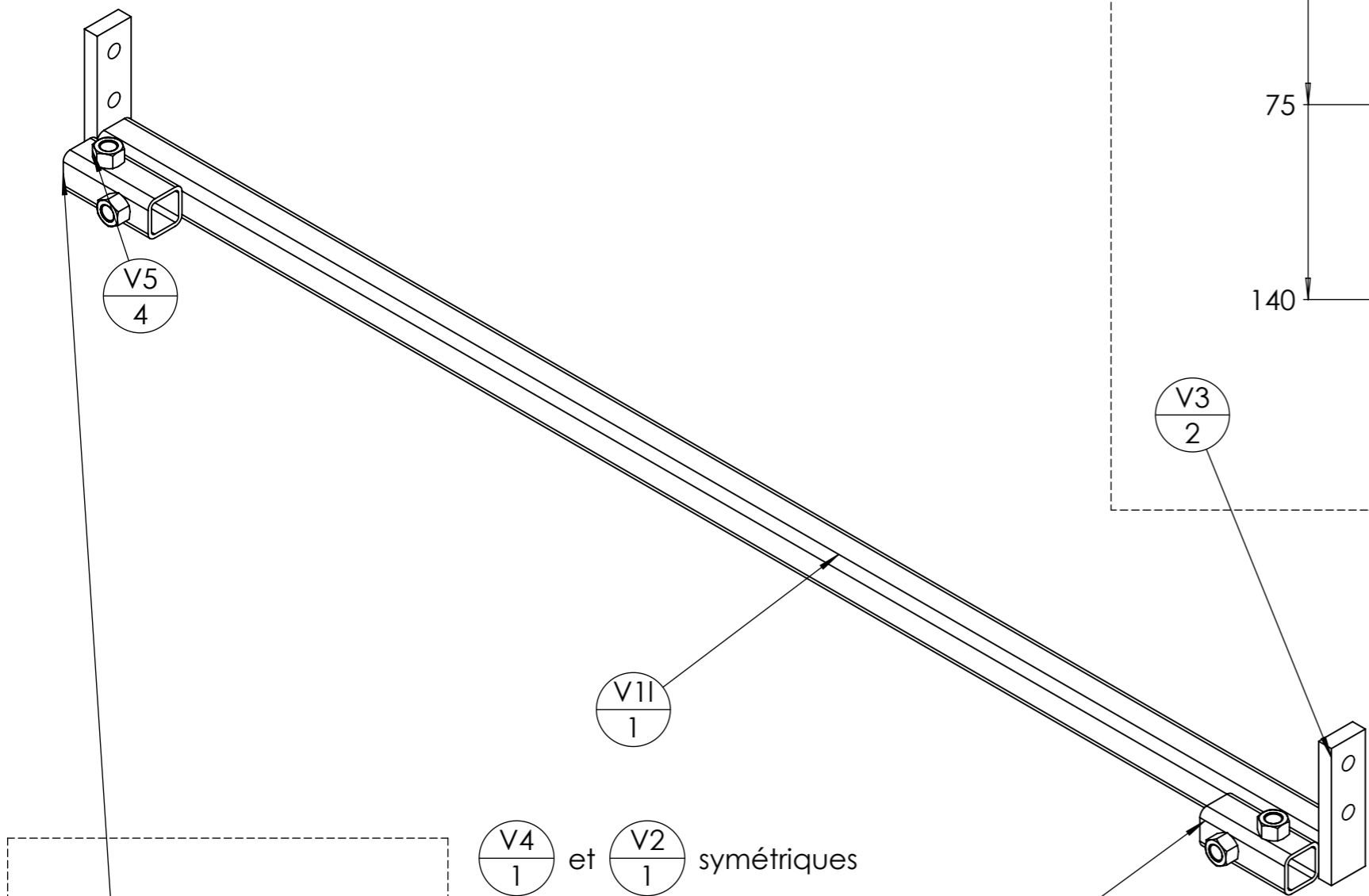
Outil	Cadre ST large		
Date	11/01/2023	Version	4.1
Feuille	S large position		



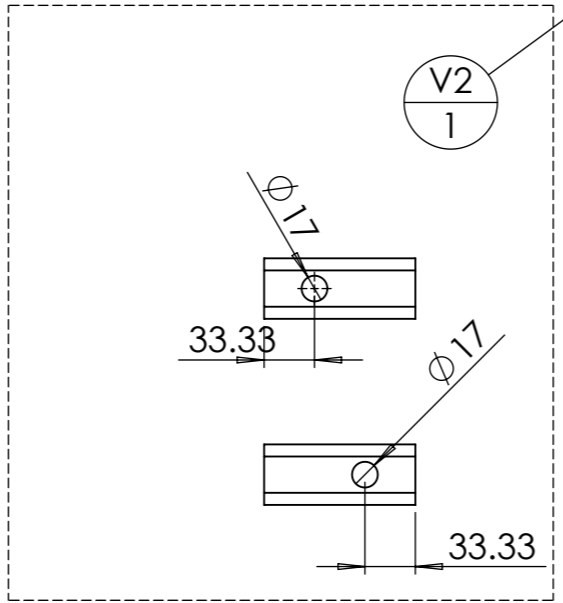


Outil	<b>Cadre ST large</b>			<b>L'atelier paysan</b>	
Date	11/01/2023	Version	4.1		page n° <b>7</b> / 13
Feuille	<b>V large position</b>				





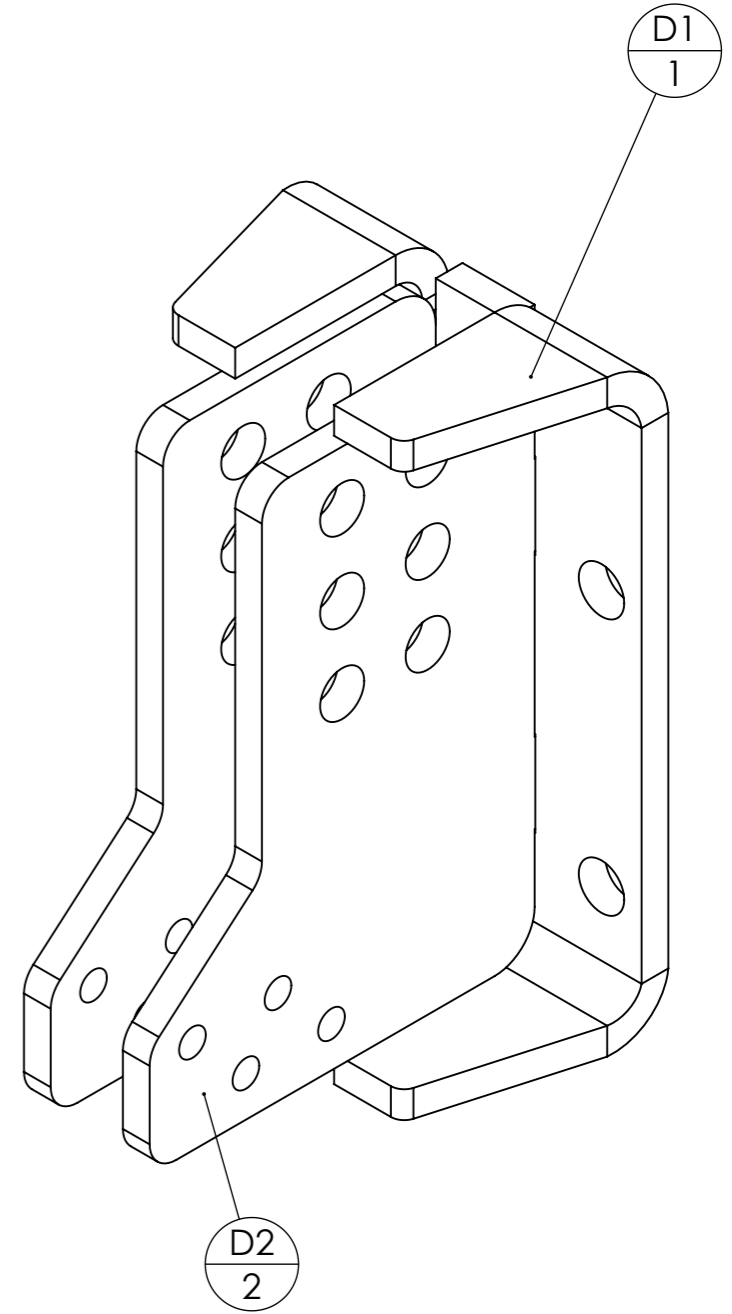
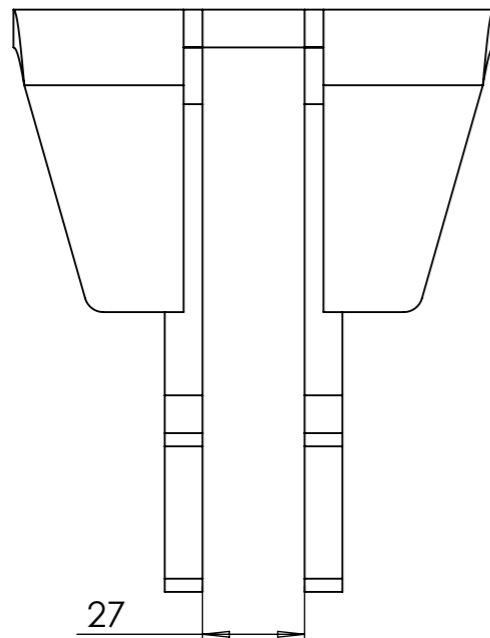
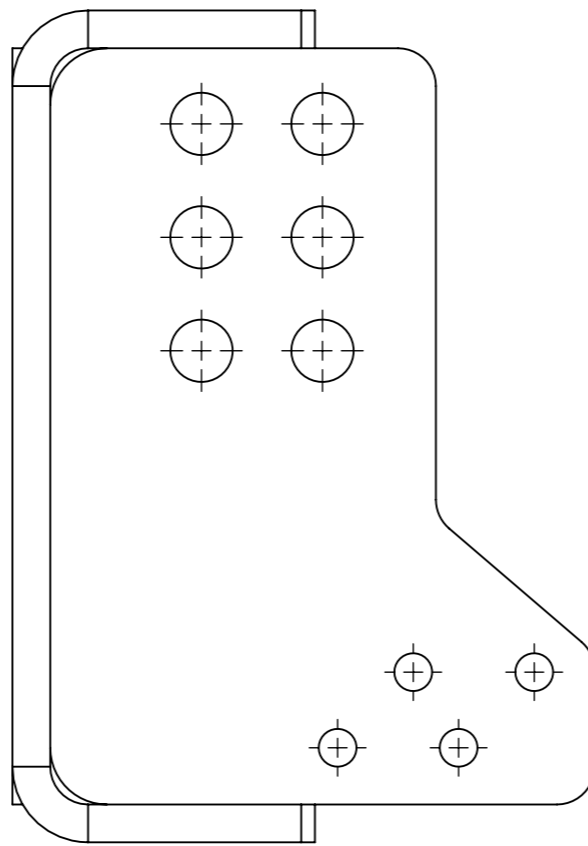
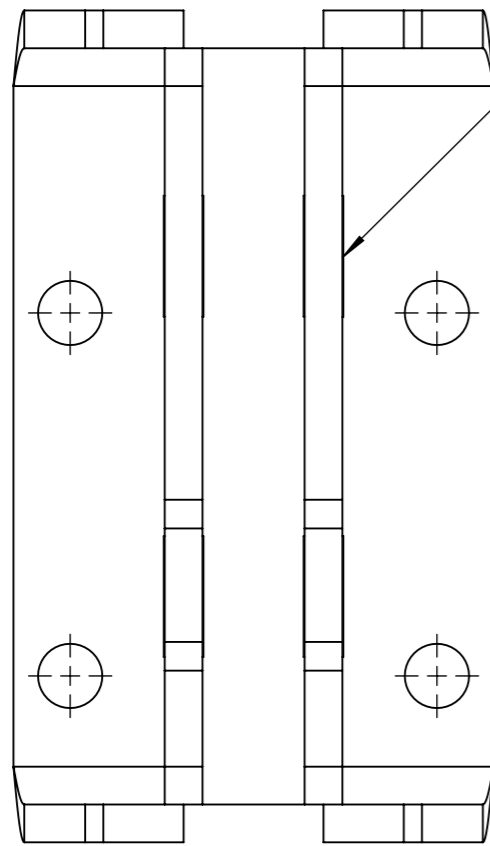
V4 et V2 symétriques



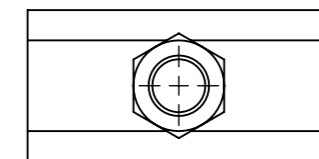
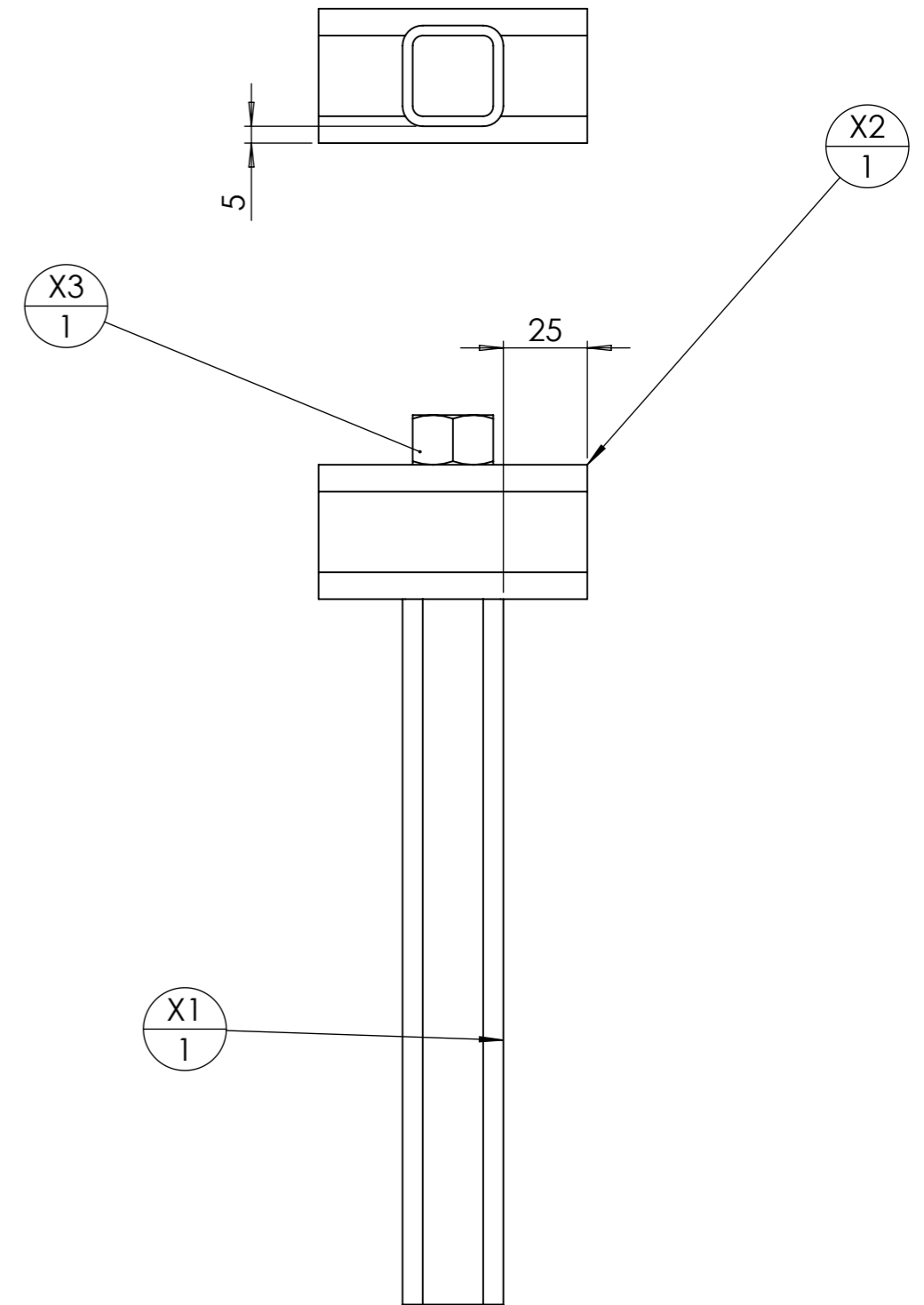
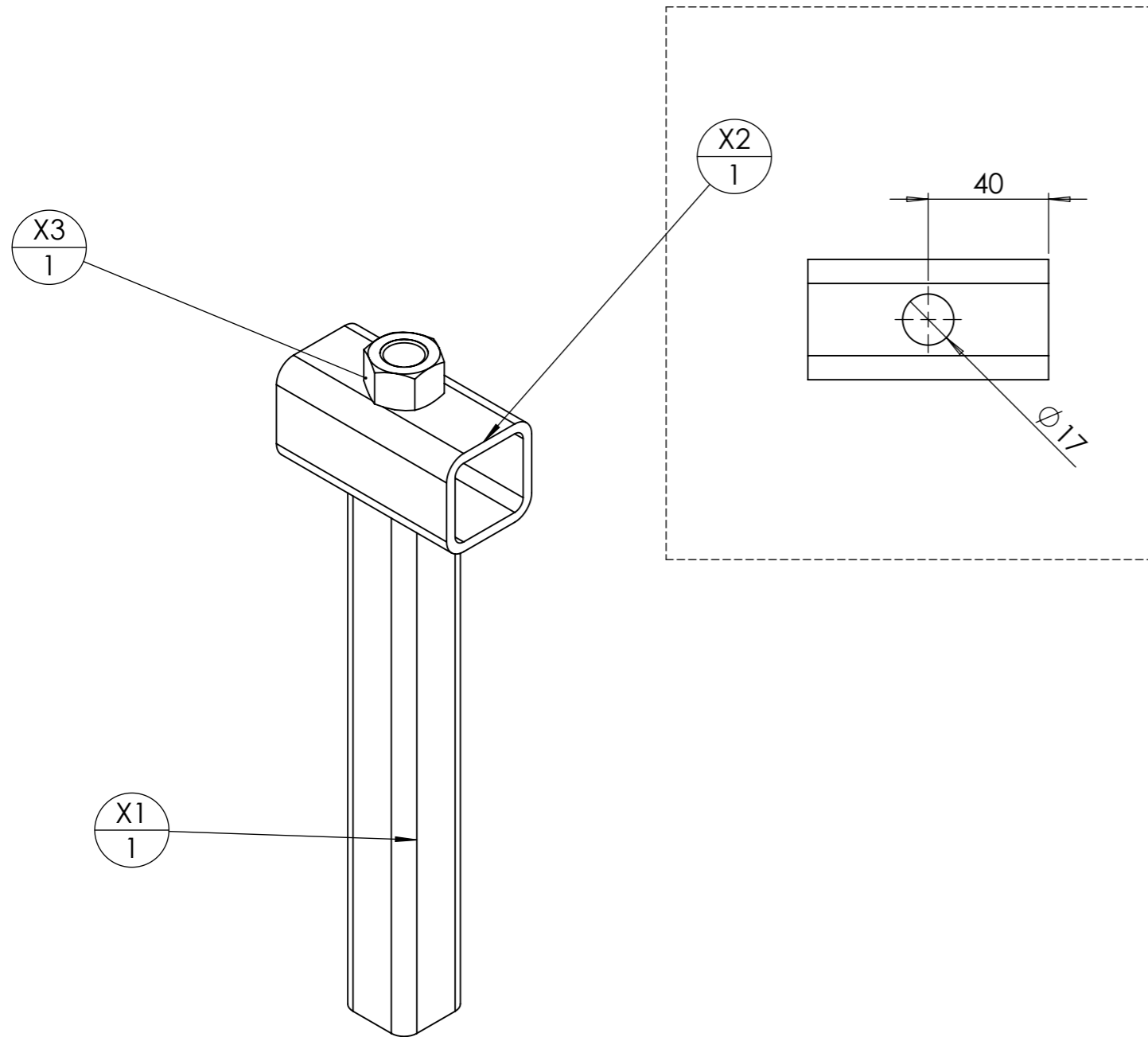
ID	Description	ANGLE1	ANGLE2	p	Longueur	Qté
V11	tube carré 40 x 4	0.00	0.00		1440	1
V2	tube carré 40 x 4	0.00	0.00	2x Ø17 ;	100	1
V3	Fer plat 40 x 15	0.00	0.00	2x Ø14 ;	140	2
V4	tube carré 40 x 4	0.00	0.00	2x Ø17 ;	100	1
V5	Ecrou M16 brut					4



Des tenons-mortaises facilitent l'assemblage.

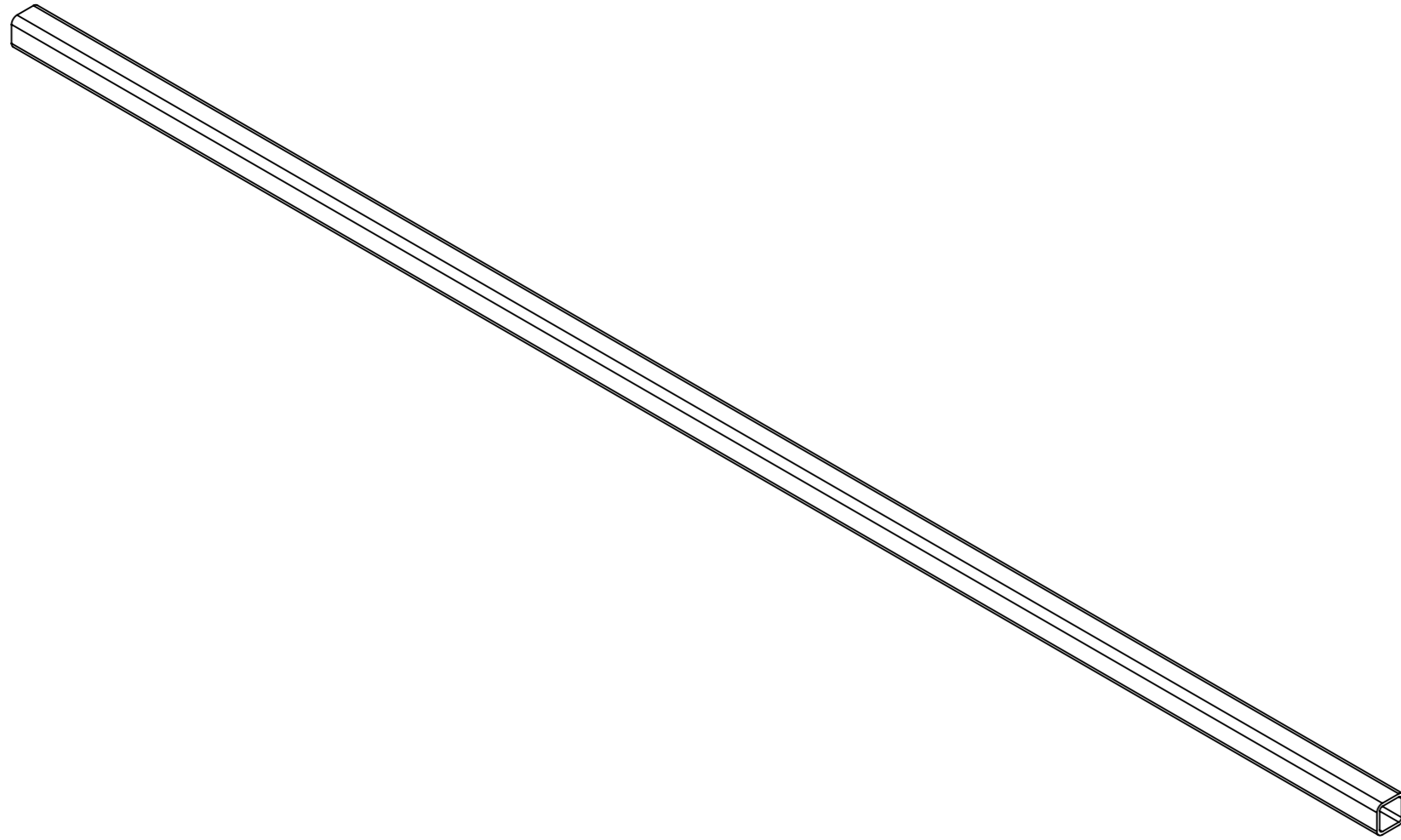


ID	Description	Qté
D1	châpe de fixation sur bâti de 80	1
D2	châpe mobile pour dent de semoir	2

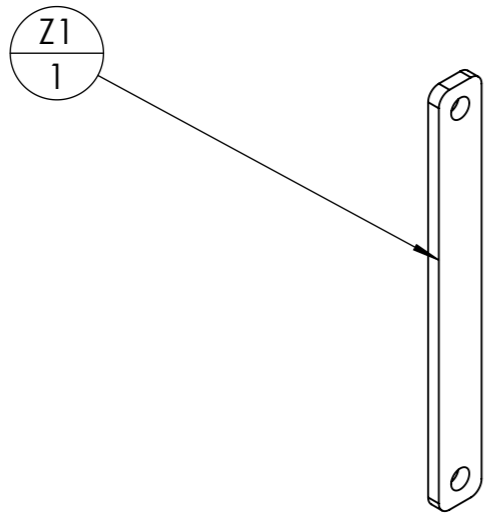


ID	Description	ANGLE1	ANGLE2	p	Longueur	Qté
X1	tube carré 30 x 3	0.00	0.00		210	1
X2	tube carré 40 x 4	0.00	0.00	1x Ø17 ;	80	1
X3	Ecrou M16 brut					1

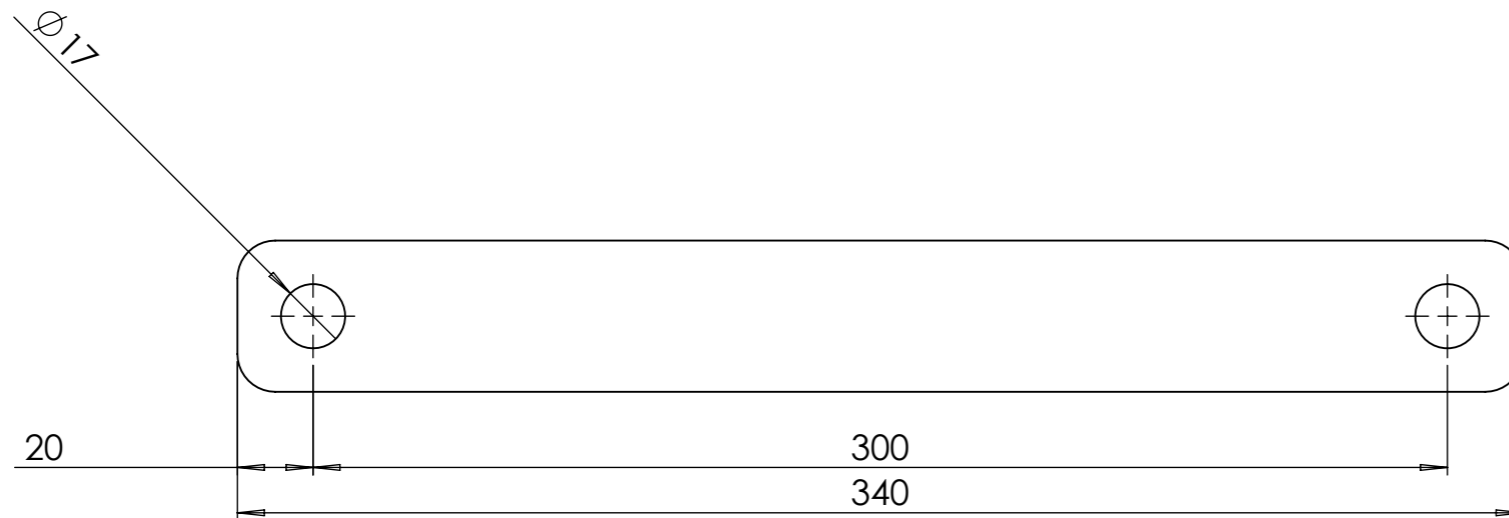
Outil	Cadre ST large				
Date	11/01/2023	Version	4.1		page n° 11 / 13
Feuille	Y				



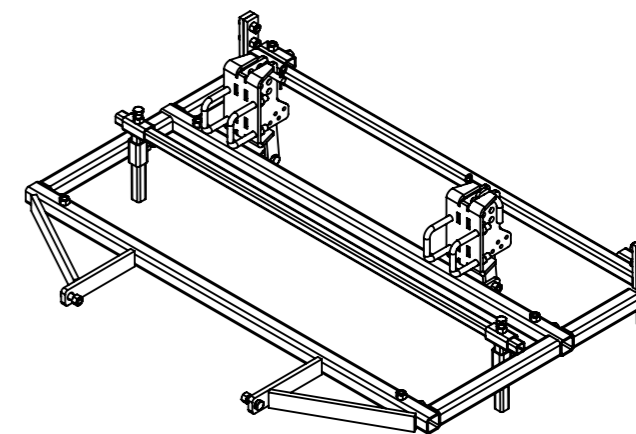
ID	Description	ANGLE1	ANGLE2	p	Longueur	Qté
Y11	tube carré 30 x 3	0.00	0.00		1500	1



ID	Description	ANGLE1	ANGLE2	p	Longueur	Qté
Z1	Fer plat 40 x 10	0.00	0.00	2x Ø17 ;	340	1



Outil	Cadre ST large				
Date	11/01/2023	Version	4.1		page n° 13 / 13
Feuille	Fournitures				



repère	Désignation	ANGLE1	ANGLE2	p	LONGUEUR	Quantité
V	barre porte dent					1
V11	tube carré 40 x 4	0.00	0.00		1440	1
V2	tube carré 40 x 4	0.00	0.00	2x Ø17 ;	100	1
V3	Fer plat 40 x 15	0.00	0.00	2x Ø14 ;	140	2
V5	Ecrou M16 brut					4
V4	tube carré 40 x 4	0.00	0.00	2x Ø17 ;	100	1
Vis Hexagonale	Vis hexagonale M16 x 35					6
Ecrou	Ecrou M16 autofreiné					16
Vis Hexagonale	Vis hexagonale M16 x 50					6
Z1	Fer plat 40 x 10	0.00	0.00	2x Ø17 ;	340	2
Y11	tube carré 30 x 3	0.00	0.00		1500	1
X1	tube carré 30 x 3	0.00	0.00		210	2
X2	tube carré 40 x 4	0.00	0.00	1x Ø17 ;	80	2
X3	Ecrou M16 brut					2
S11	tube carré 50 x 5	0.00	0.00	4x Ø17 ;	1500	2
S2	tube carré 50 x 5	0.00	0.00		250	2
S3	tube carré 50 x 5	0.00	0.00		450	2
S4	fer plat 50 x 15	0.00	0.00	1x Ø22 ;	260	2
S51	fer plat 50 x 15	0.00	0.00		401.4653	2
S6	Fer plat 40 x 15	0.00	0.00	9x Ø14 ;	250	2
S8	tube carré 40 x 4	0.00	0.00	1x Ø17 ;	70	2
S9	Fer plat 40 x 10	0.00	0.00	1x Ø16 ;	50	2
S10	Ecrou M16 brut					10
Broche 1 - 16 L100	étiré rond Ø16	0.00	0.00	5	175.13	2
Goupille épingle d'axe, 15x70 Ø4	Goupille épingle d'axe 15x70 Ø4					2
D	Bride viticole					2
D1	châpe de fixation sur bâti de 80					1
D2	châpe mobile pour dent de semoir					2
Bride en U pour bâti de 80	Bride en U pour bâti de 80					4