

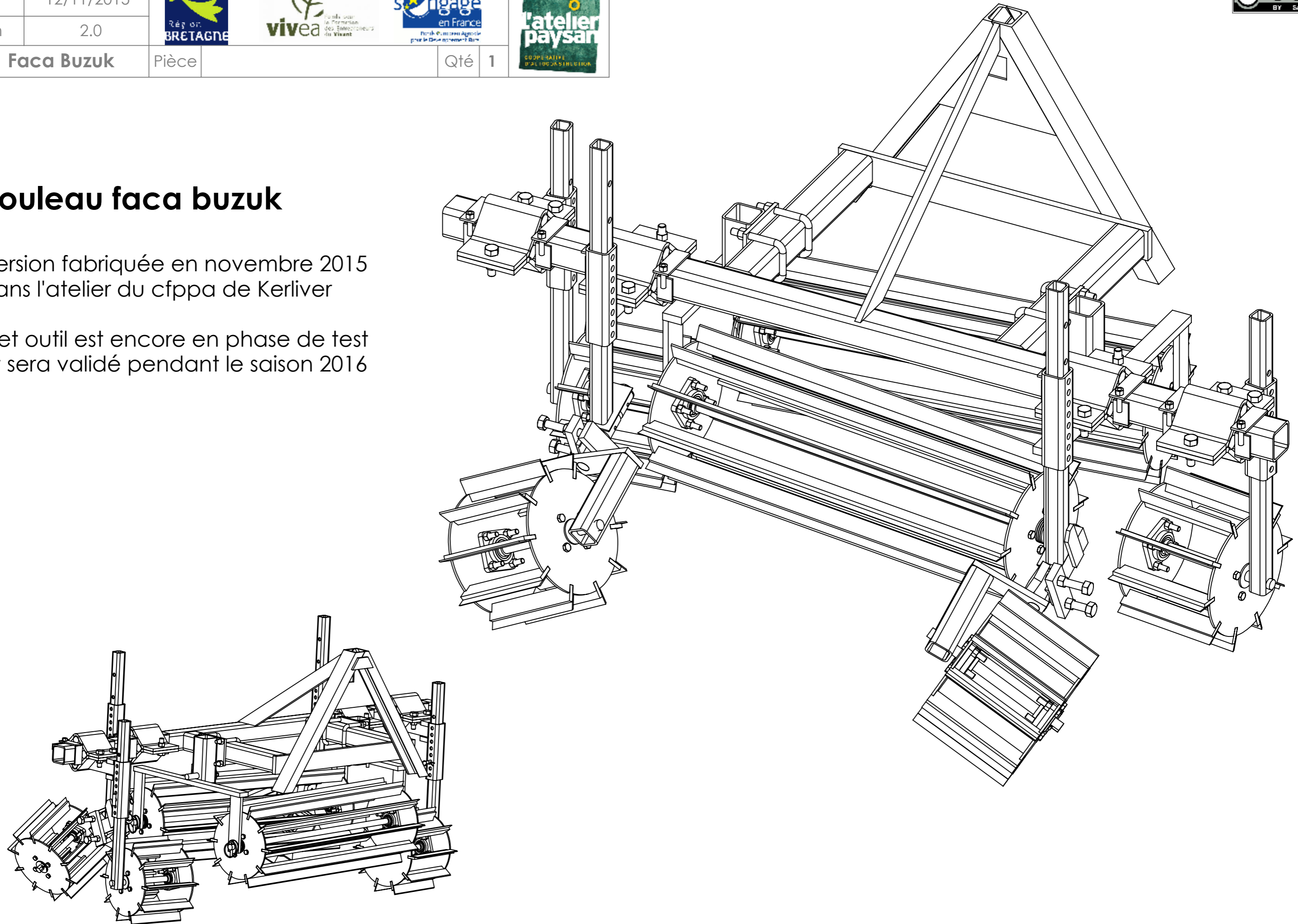
Date	12/11/2015	   		
Version	2.0			
Outil	Faca Buzuk	Pièce	Qté	1



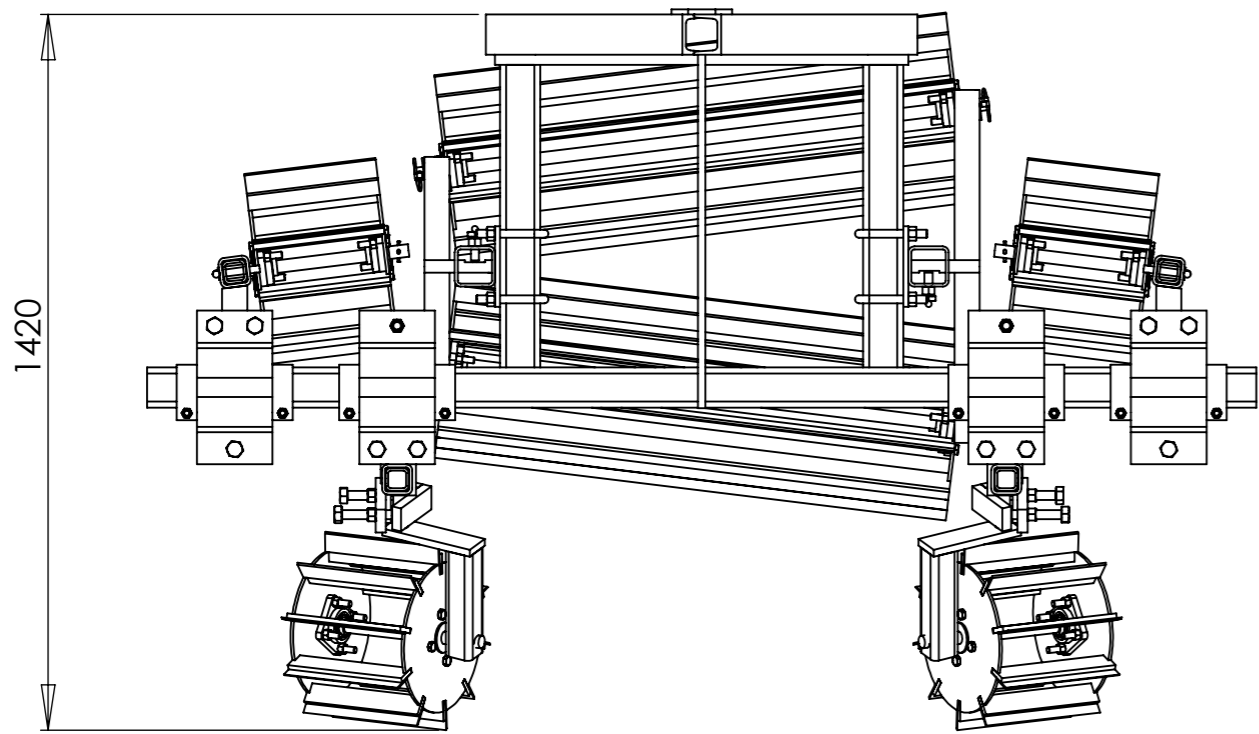
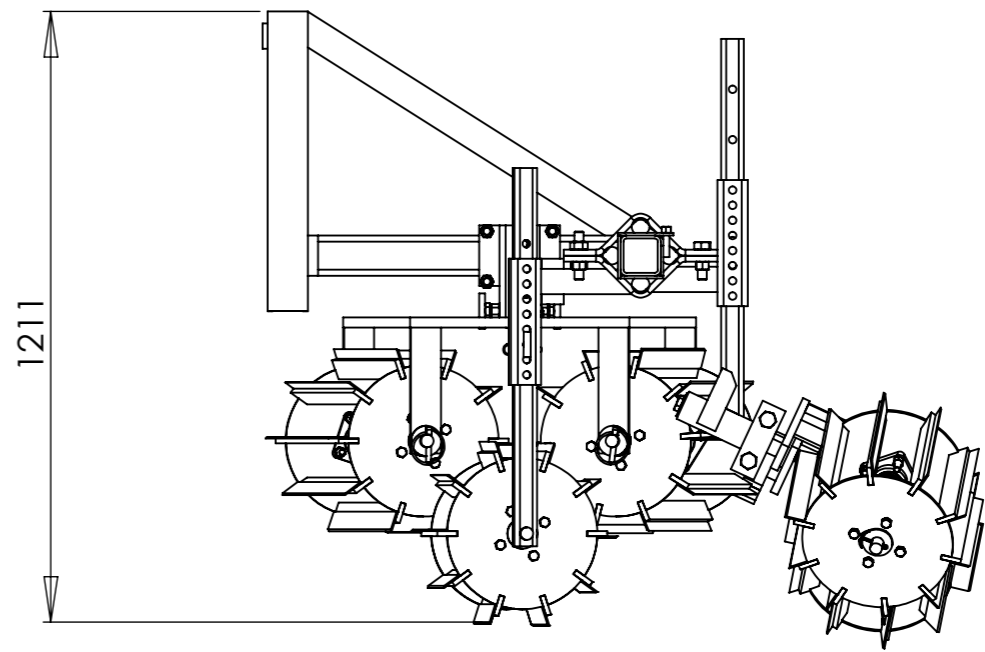
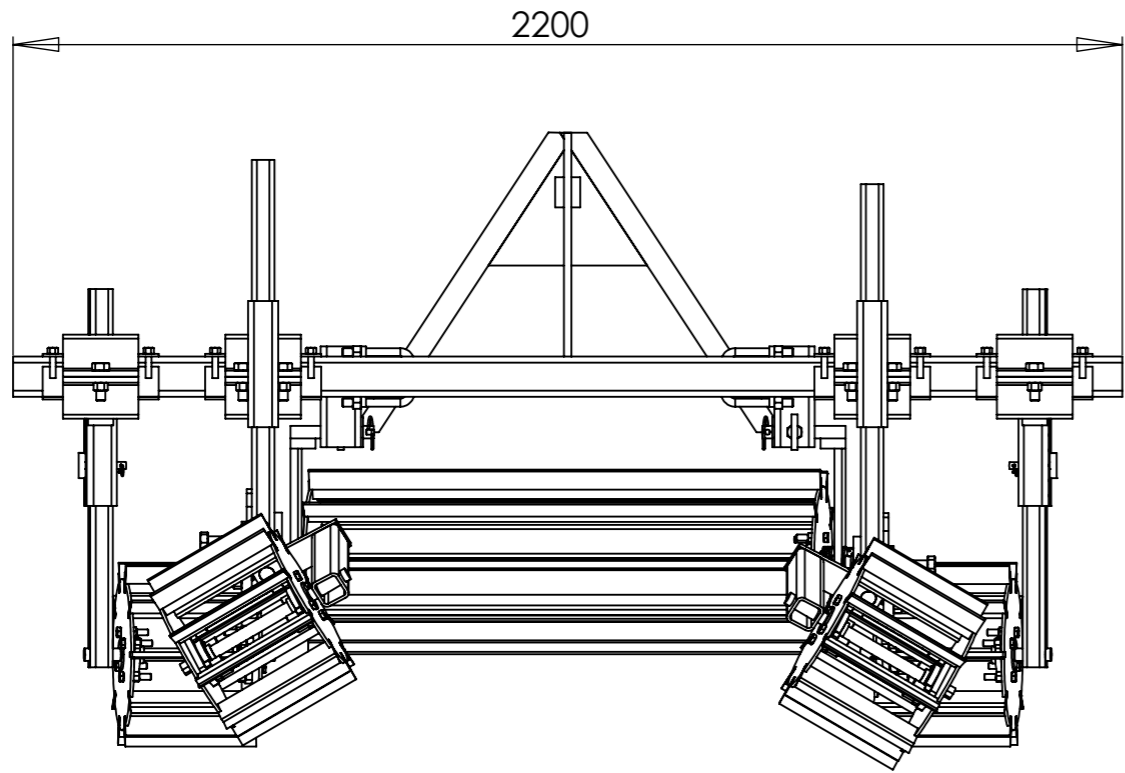
Rouleau faca buzuk

Version fabriquée en novembre 2015 dans l'atelier du cfppa de Kerliver

Cet outil est encore en phase de test et sera validé pendant le saison 2016



Date	12/11/2015	   			
Version	2.0				
Outil	Faca Buzuk	Pièce	Encombrement	Qté	1

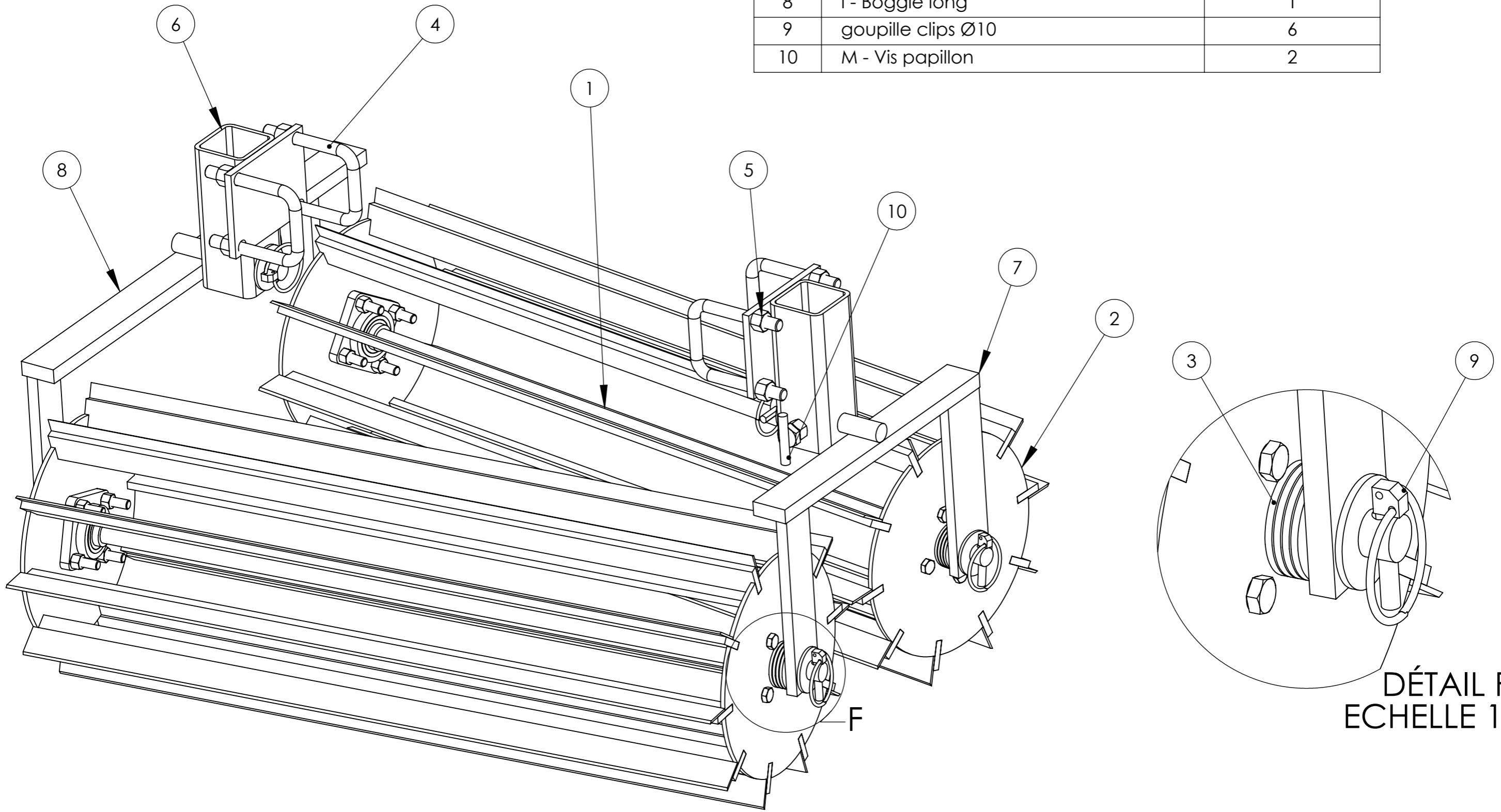


Date	12/11/2015
Version	2.0
Outil	Facca Buzuk



Pièce	Rouleaux centraux	Qté	1
-------	--------------------------	-----	---

N°	Désignation	Rouleaux centraux seuls/Quantité
1	S - Axe des rouleaux centraux	2
2	R - Rouleau 1022	2
3	Rondelle Ø24 série LU	22
4	Bride en U pour bâti de 80	4
5	Ecrou M16	8
6	J - Bras rouleau centraux	2
7	I - boggie court	1
8	I - Boggie long	1
9	goupille clips Ø10	6
10	M - Vis papillon	2

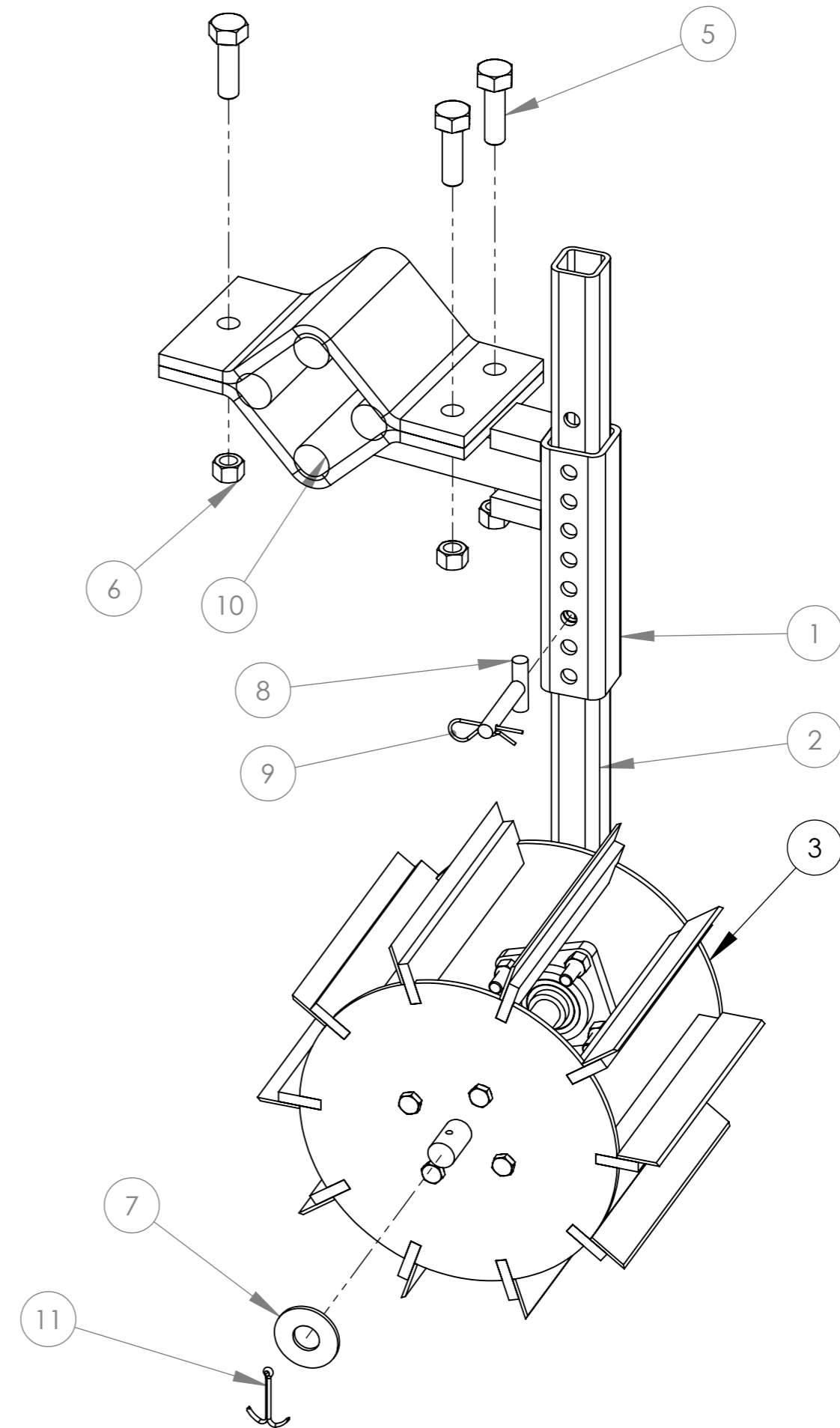


DÉTAIL F
ECHELLE 1 : 2

Date	12/11/2015	   			
Version	2.0				
Outil	Faca Buzuk	Pièce	Rouleau coté	Qté	1



N°	Désignation	Qté
1	G - Chape rouleau coté	1
2	H - Bras de rouleau de coté	1
3	R - Rouleau 262mm	1
4	Demi chape amortisseur	1
5	Vis hexagonale M18 x 60	3
6	Ecrou M18	3
7	Rondelle Ø24 série LU	1
8	Broche Ø14 (C)	1
9	Goupille épingle d'axe, 15x70 Ø4	1
10	4 Ronds caoutchouc - diam 40 L150	1
11	Goupille fendue 5 x 80	1



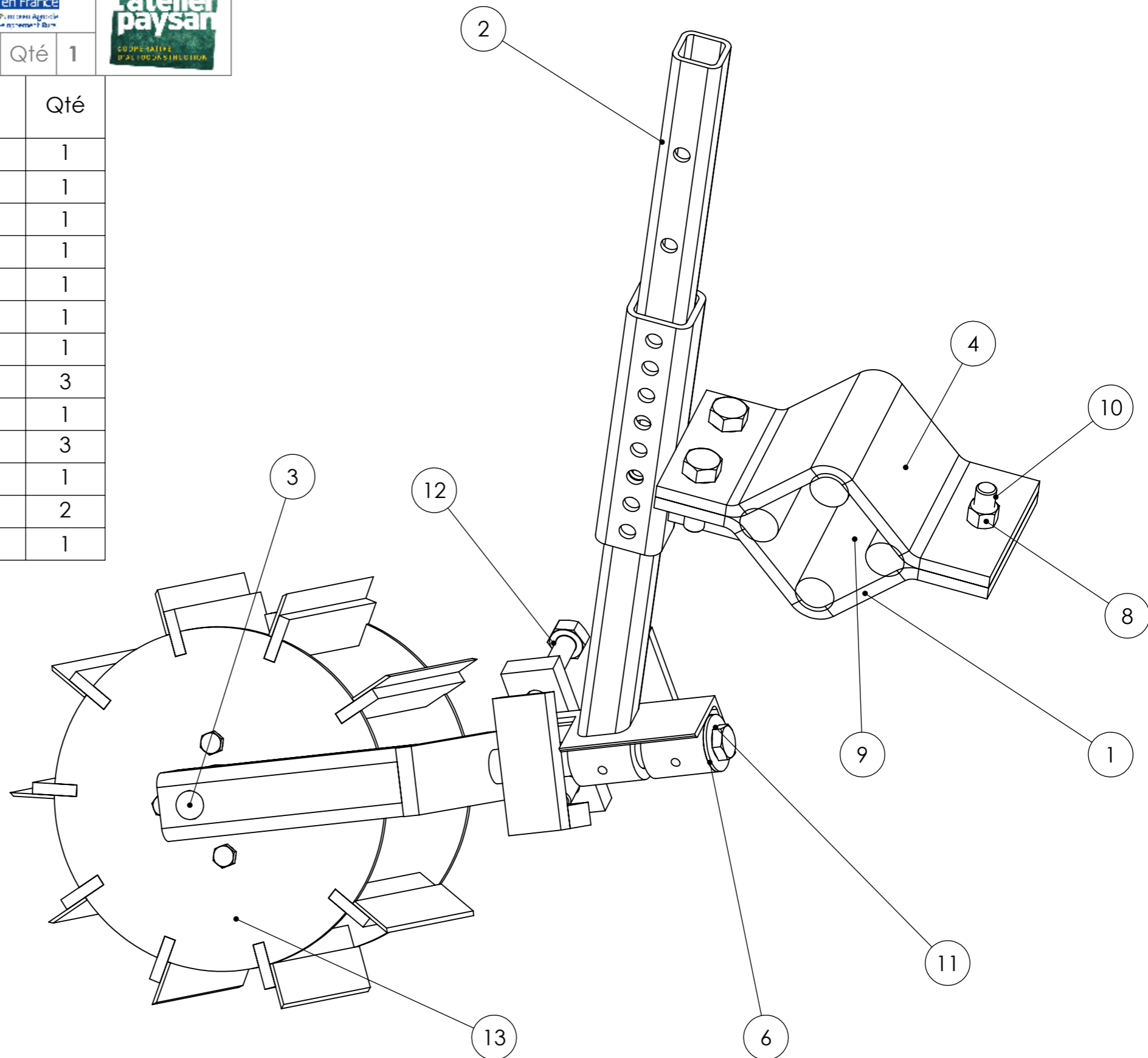
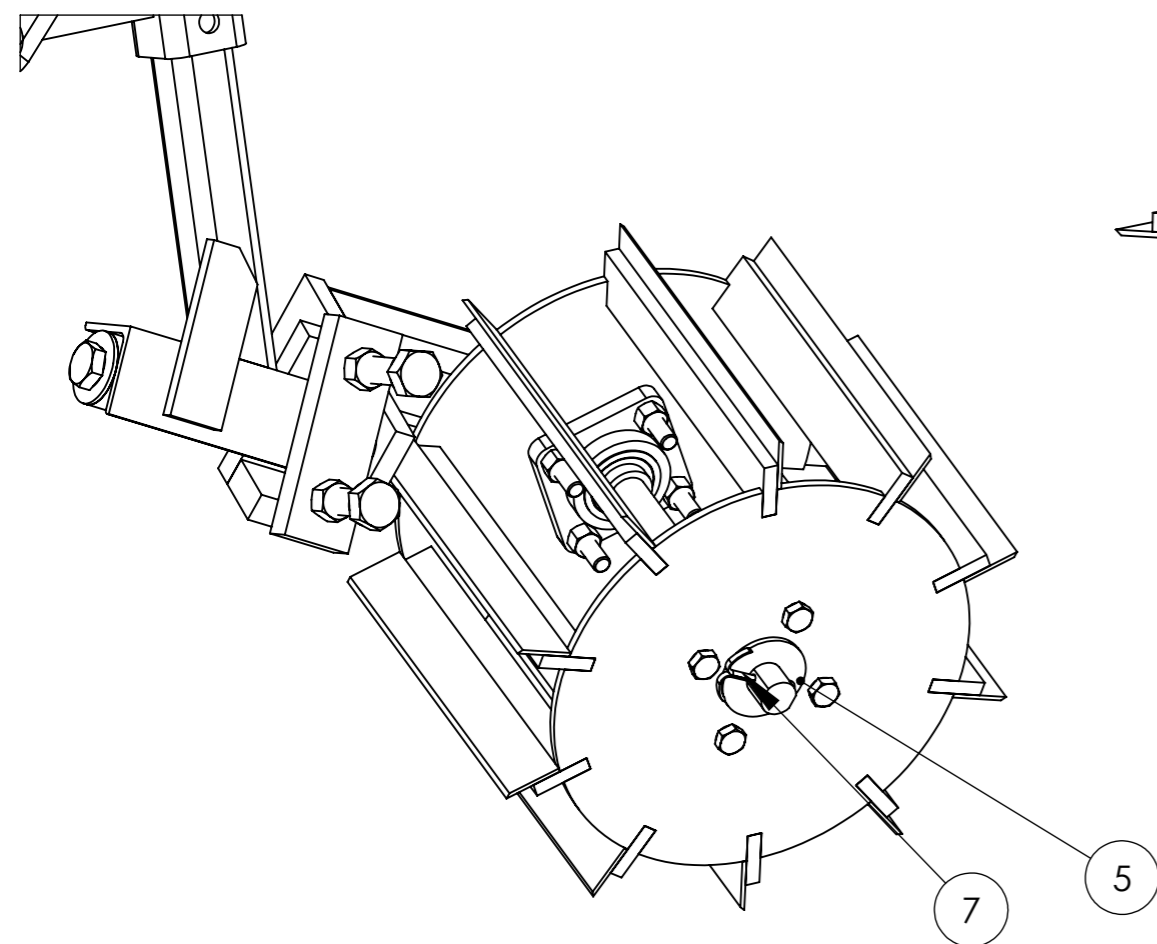
Date 12/11/2015

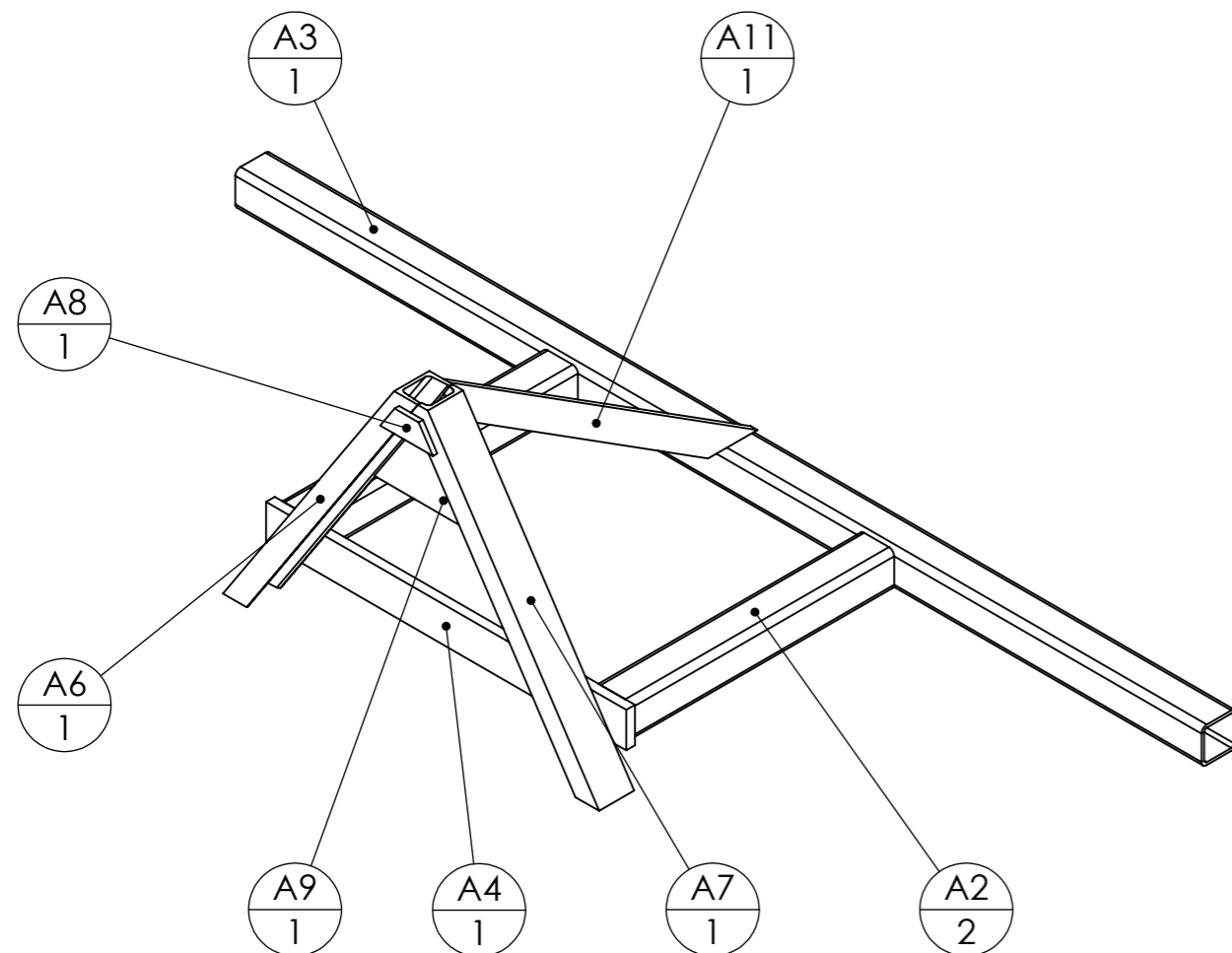
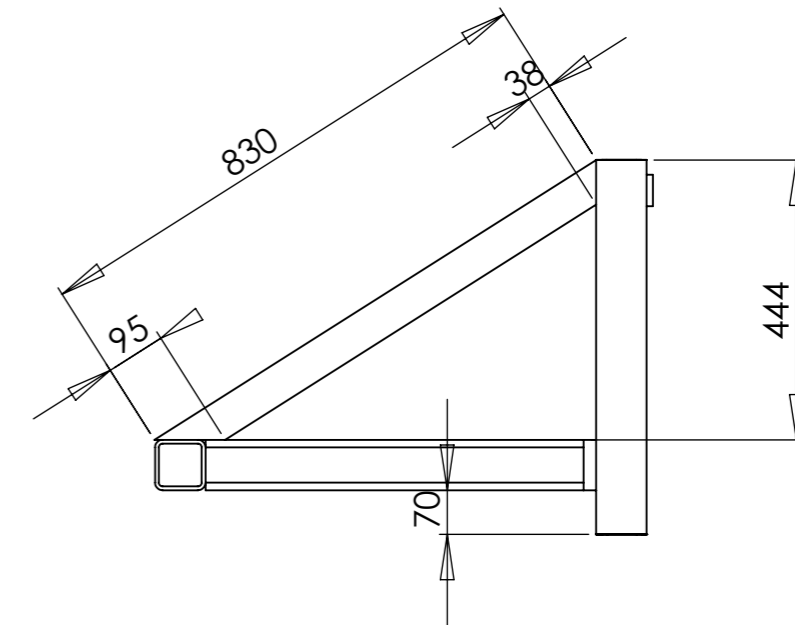
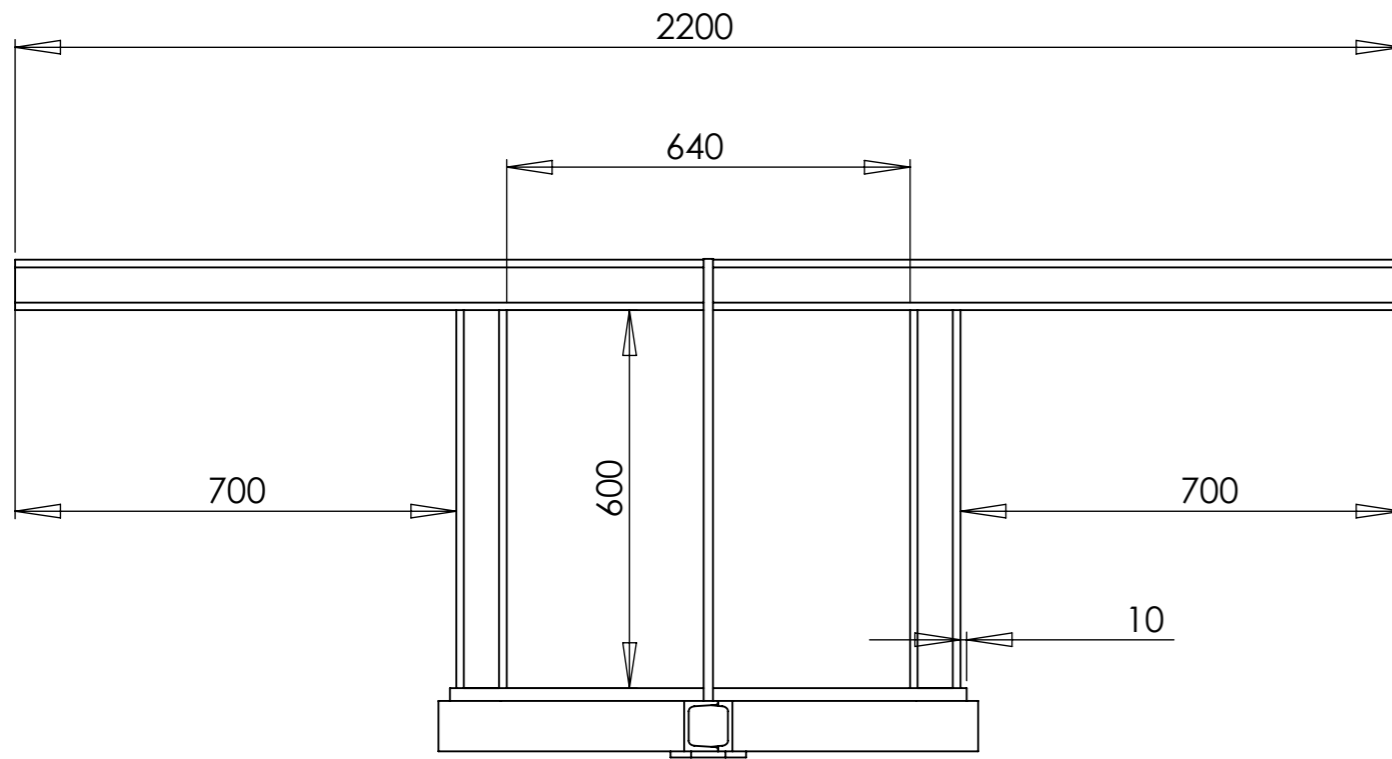
Version 2.0



Outil	Faca Buzuk	Pièce	Rouleaux flan	Qté	1
-------	-------------------	-------	----------------------	-----	---

ff	Désignation	Qté
1	C - Châpe de rouleau flan	1
2	D - Bras fixe de rouleau flan	1
3	E - bras mobile de rouleau flan	1
4	Demi châpe amortisseur	1
5	Rondelle Ø24 série LU	1
6	Rondelle Ø16 série LLU	1
7	Goupille fendue 5 x 80	1
8	Ecrou M18	3
9	4 Ronds caoutchouc - diam 40 L150	1
10	Vis hexagonale M18 x 60	3
11	Vis hexagonale M16 x 25	1
12	Vis hexagonale M18 x 100	2
13	R - Rouleau 262mm	1





N°	Désignation	Longueur	Qté
A2	tube carré 80 x 6	600	2
A3	tube carré 80 x 6	2200	1
A4	Fer plat 80 x 20	820	1
A6	Profilé UPN 80 x 45	740	1
A7	Profilé UPN 80 x 45	740	1
A8	Fer plat 50 x 10	120	1
A9	Tôle triangle intérieure		1
A11	Fer plat 60 x 15	830	1

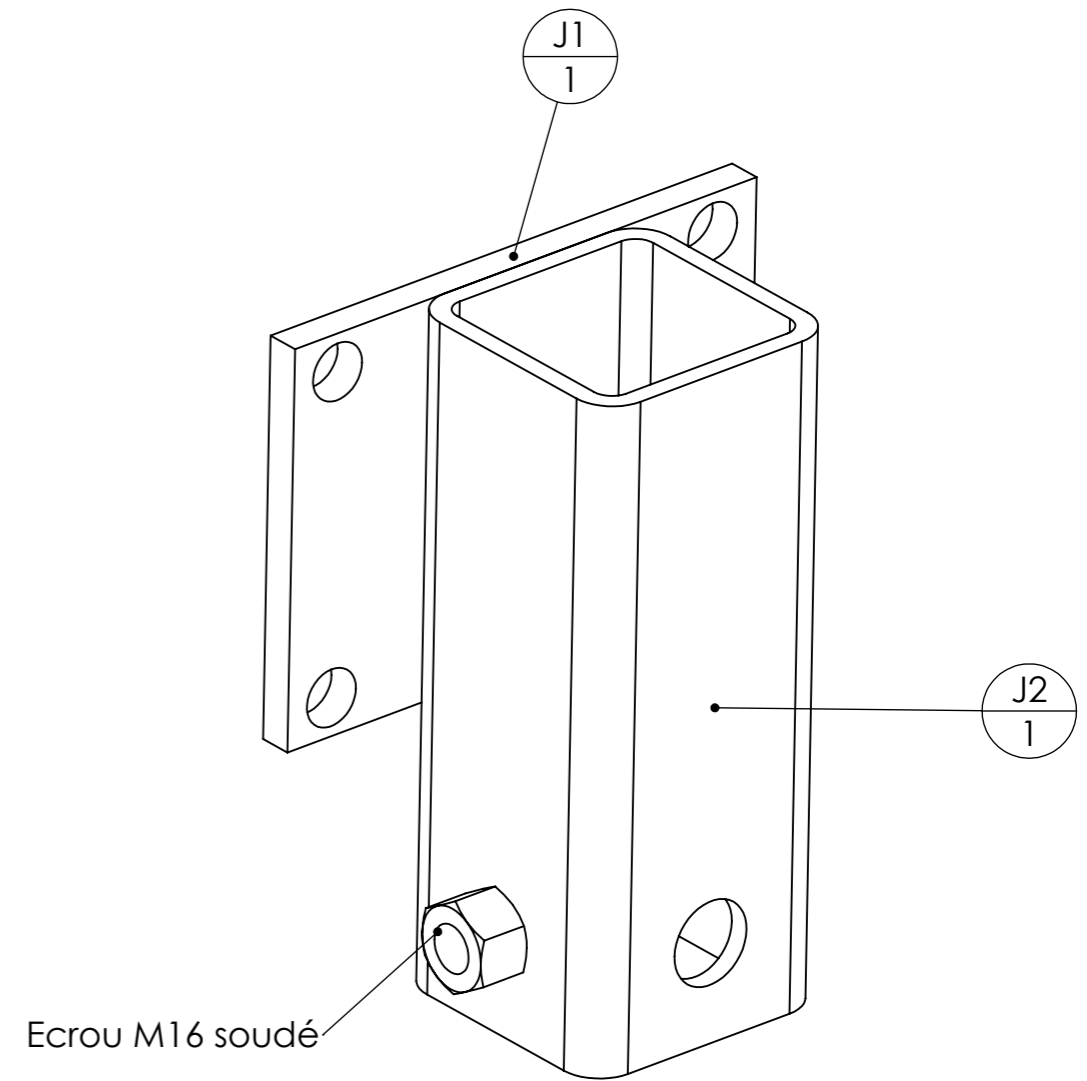
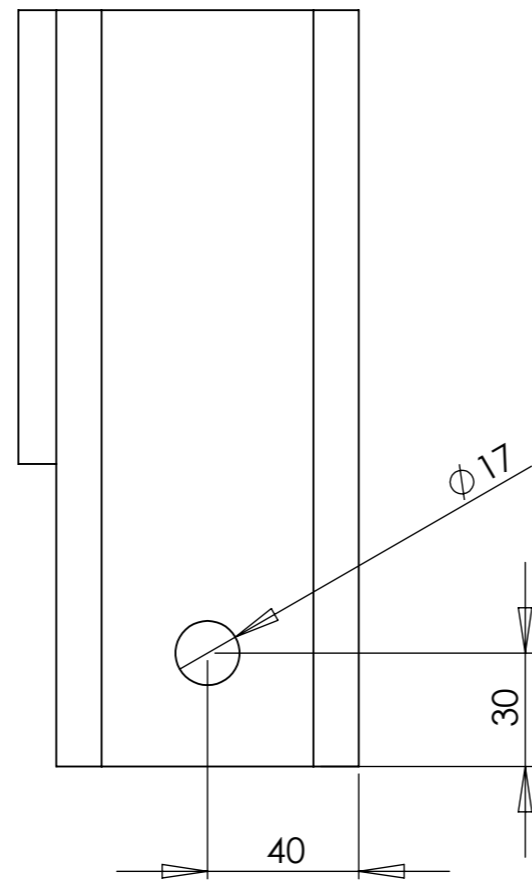
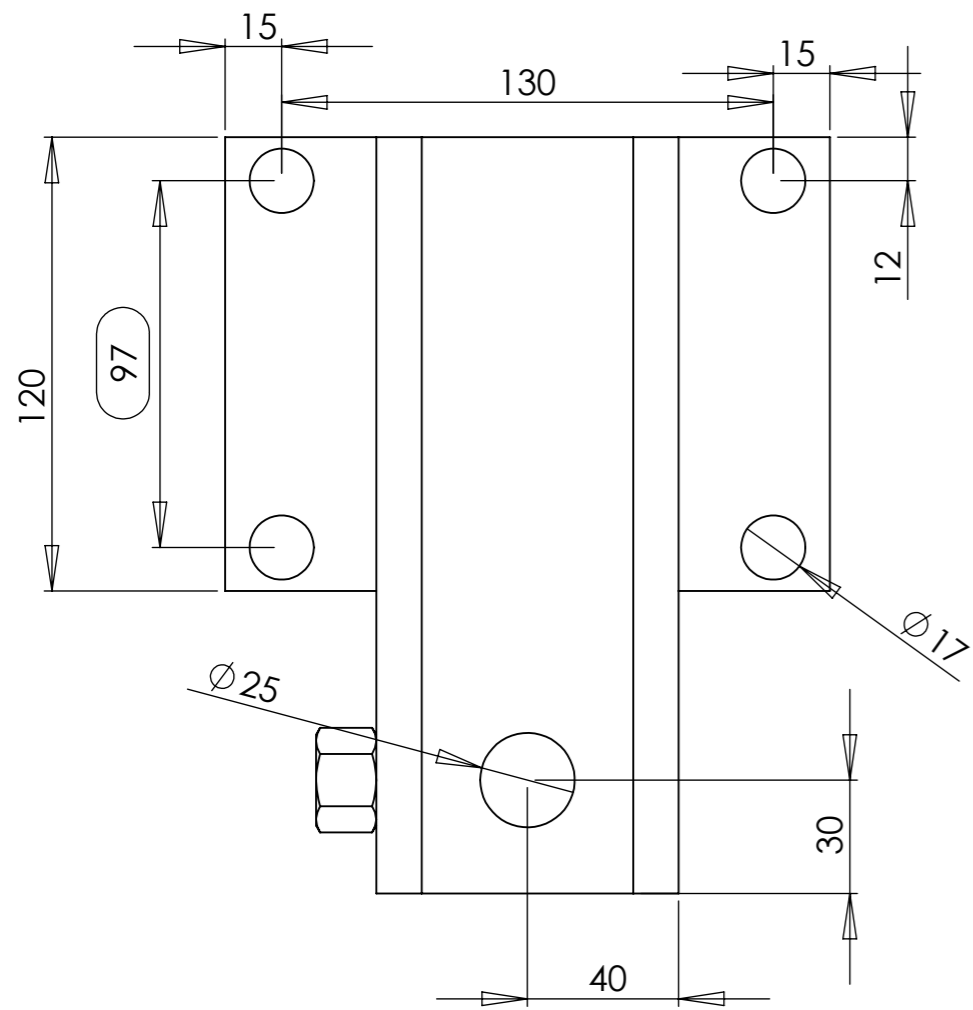
Date 12/11/2015

Version 2.0

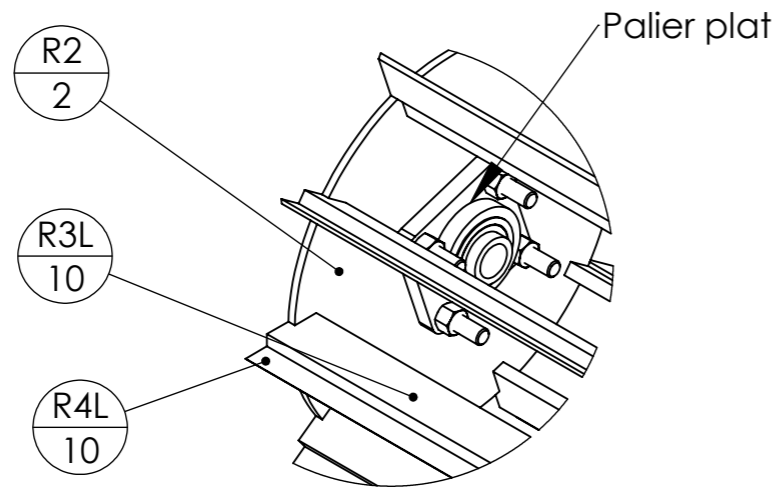
Outil **Faca Buzuk**



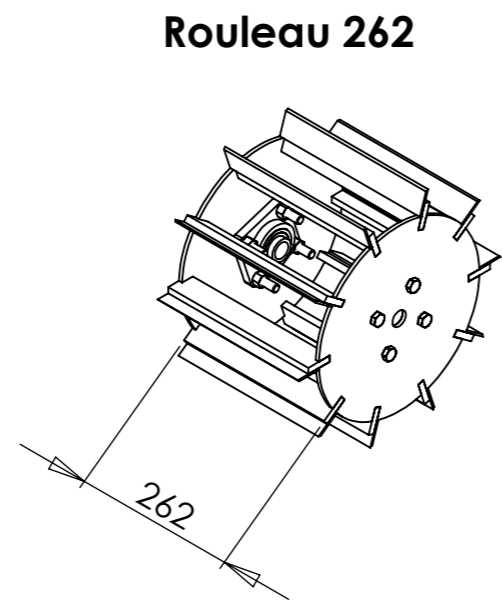
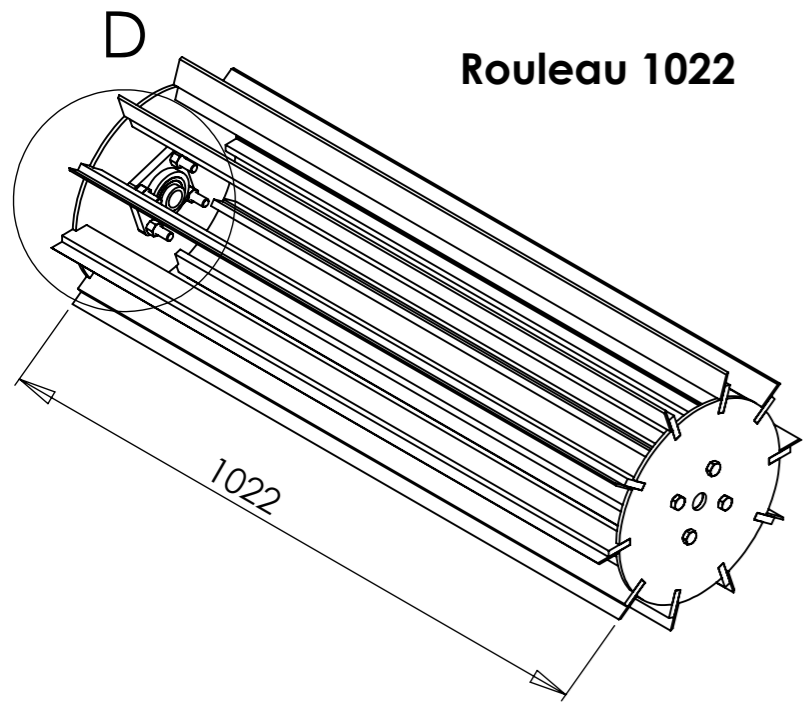
Pièce **J - Bras rouleaux centraux** Qté 2



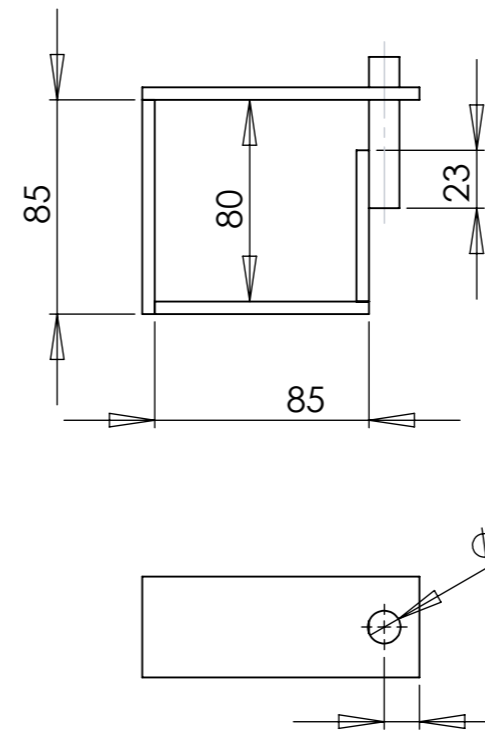
N°	Désignation	Longueur	Qté
J1	Fer plat 120 x 10	160	1
J2	tube carré 80 x 6	200	1
Ecrou	Ecrou M16 brut		1



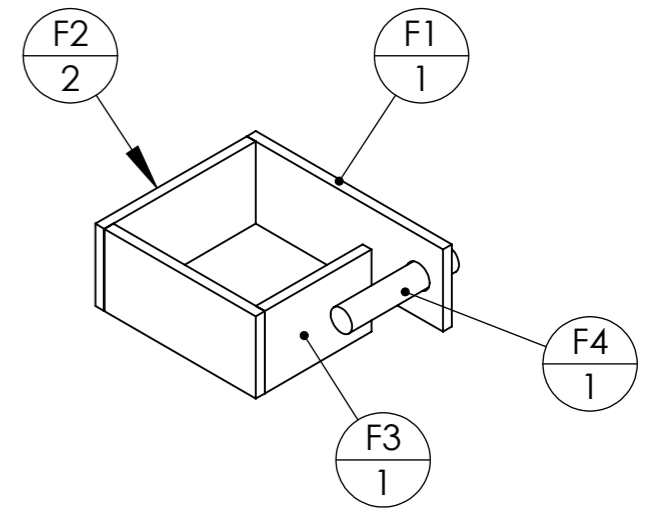
DÉTAIL D
ECHELLE 1 : 5



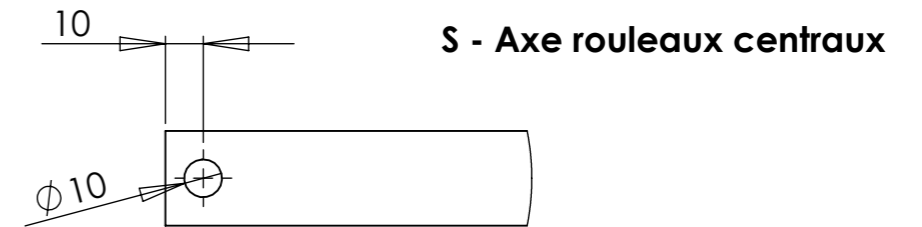
N°	Désignation	Longueur	Qté
R2	Coupelle toile laser pour rouleau facca Ø300 ep6		2
R3L	fer plat 40 x 10	1022	10
R4L	Acier étiré section rectangulaire 40 x 3	1022	10
Ecrou	Ecrou M12		8
-	Palier plat diam 25		2
-	Vis hexagonale M12 x 55		8



F - Bague verrouillage chape

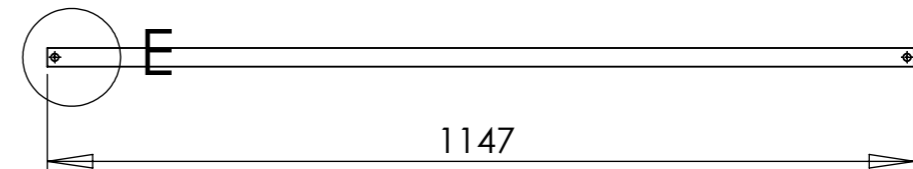


N°	Désignation	Longueur	Qté
F1	Fer plat 40 x 5	110	1
F2	Fer plat 40 x 5	85	2
F3	Fer plat 40 x 5	60	1
F4	Tige filetée Ø12	60	1



S - Axe rouleaux centraux

DÉTAIL E
ECHELLE 1 : 2



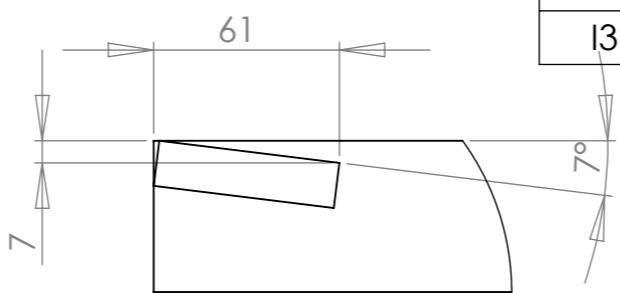
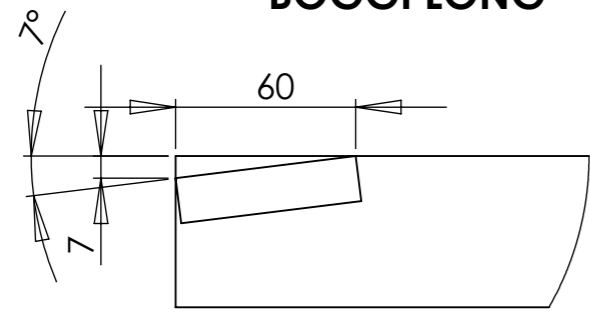
N°	Désignation	Longueur	Qté
S1	étiré rond Ø25	1147	1

Outil	Faca Buzuk	Pièce	boggies	Qté	2
-------	-------------------	-------	----------------	-----	----------

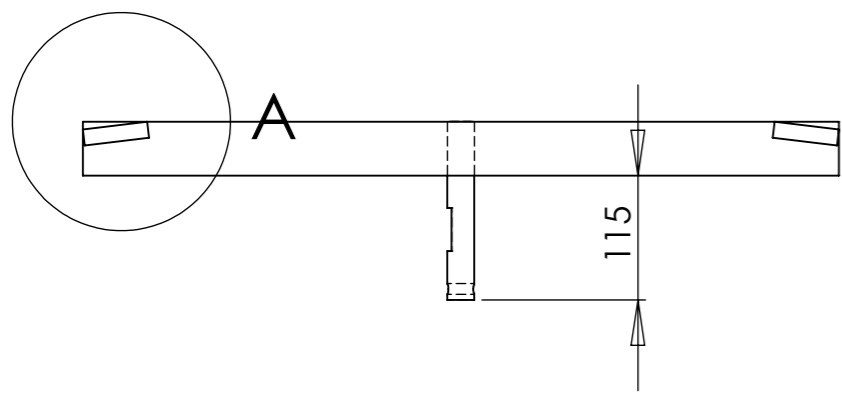
BOGGI COURT

N°	Désignation	Longueur	Qté
11	Fer plat 50 x 20	435	1
12	Fer plat 60 x 15	250	2
13	étiré rond Ø25	165	1

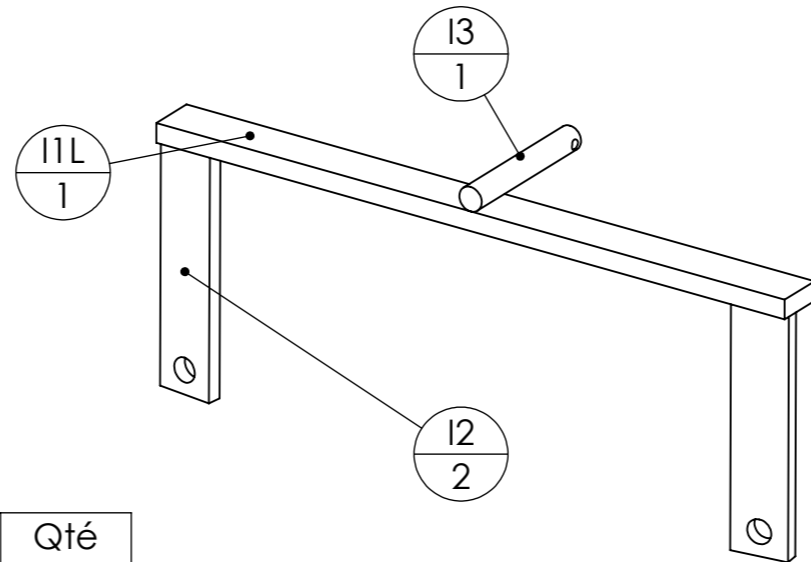
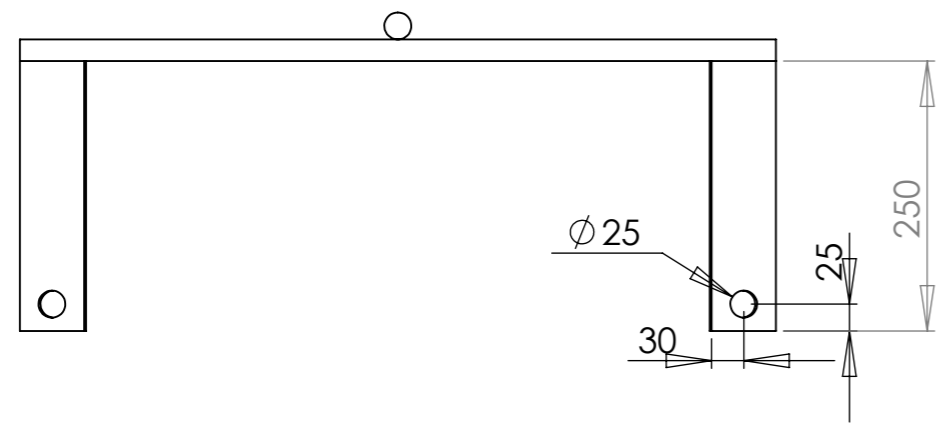
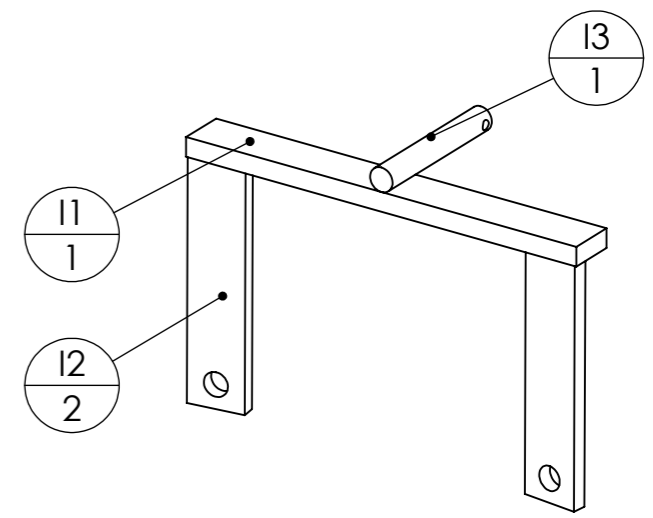
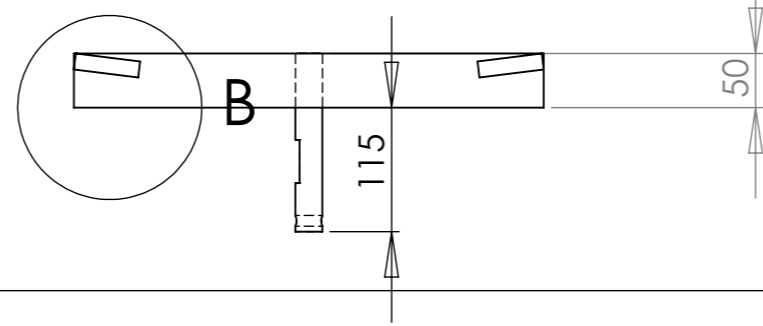
BOGGI LONG



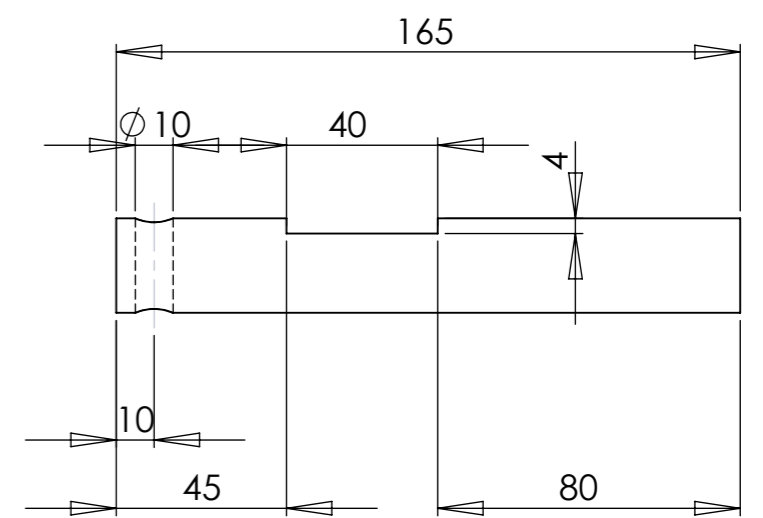
**DÉTAIL A
ECHELLE 2 : 5**



**DÉTAIL B
ECHELLE 2 : 5**

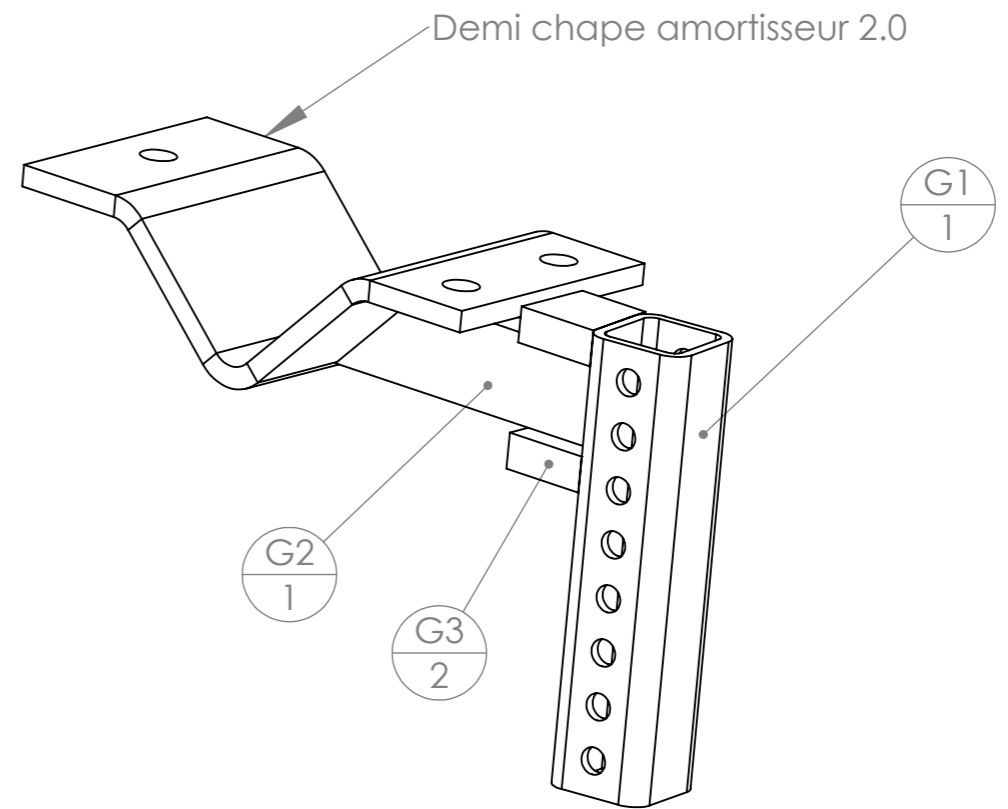
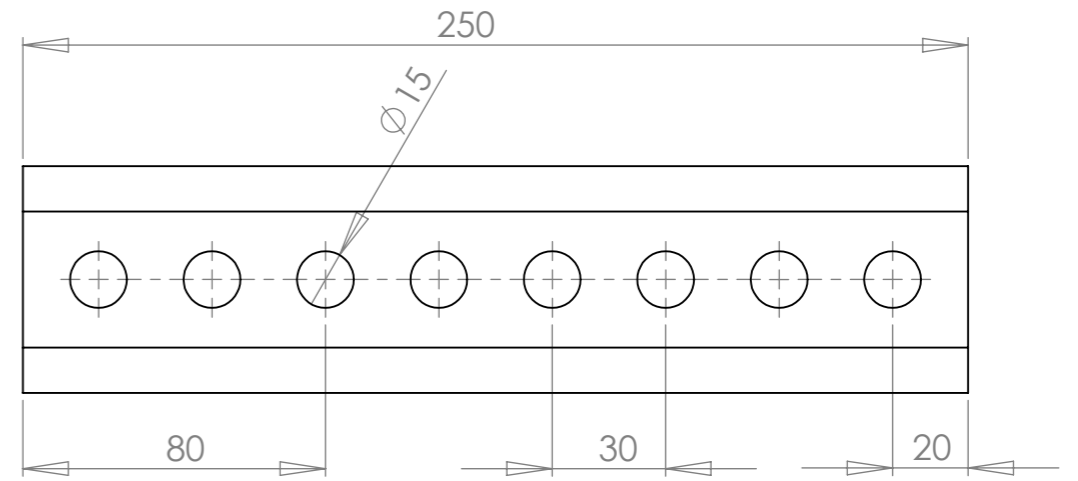
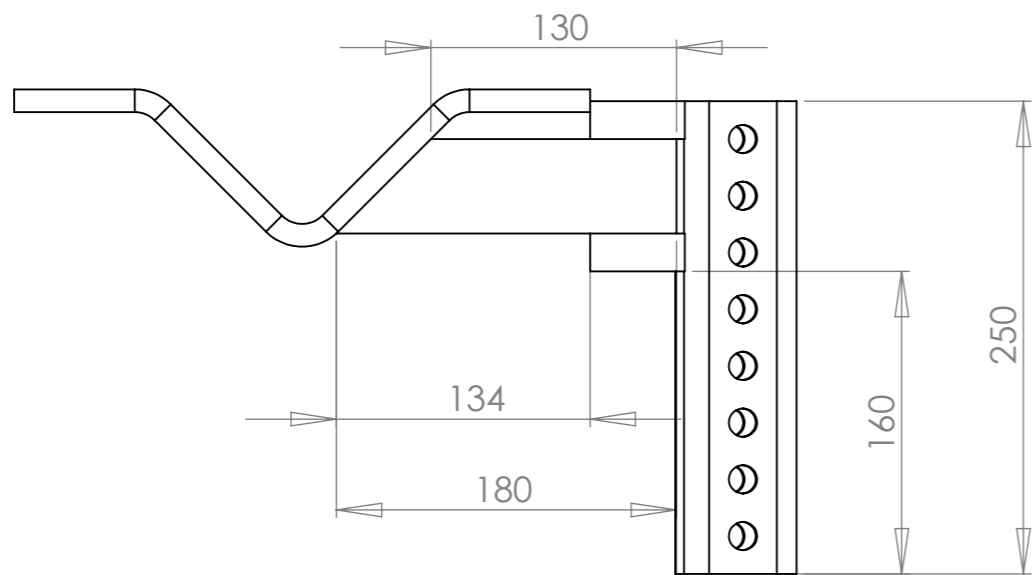
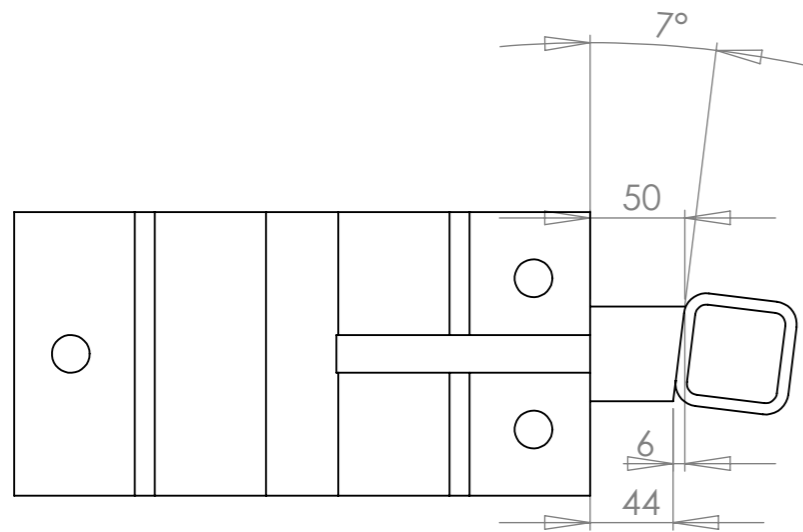


13



N°	Désignation	Longueur	Qté
12	Fer plat 60 x 15	250	2
13	étiré rond Ø25	165	1
11L	Fer plat 50 x 20	700	1

Date	12/11/2015	   			
Version	2.0				
Outil	Faca Buzuk	Pièce	G - Châpe rouleau coté	Qté	2



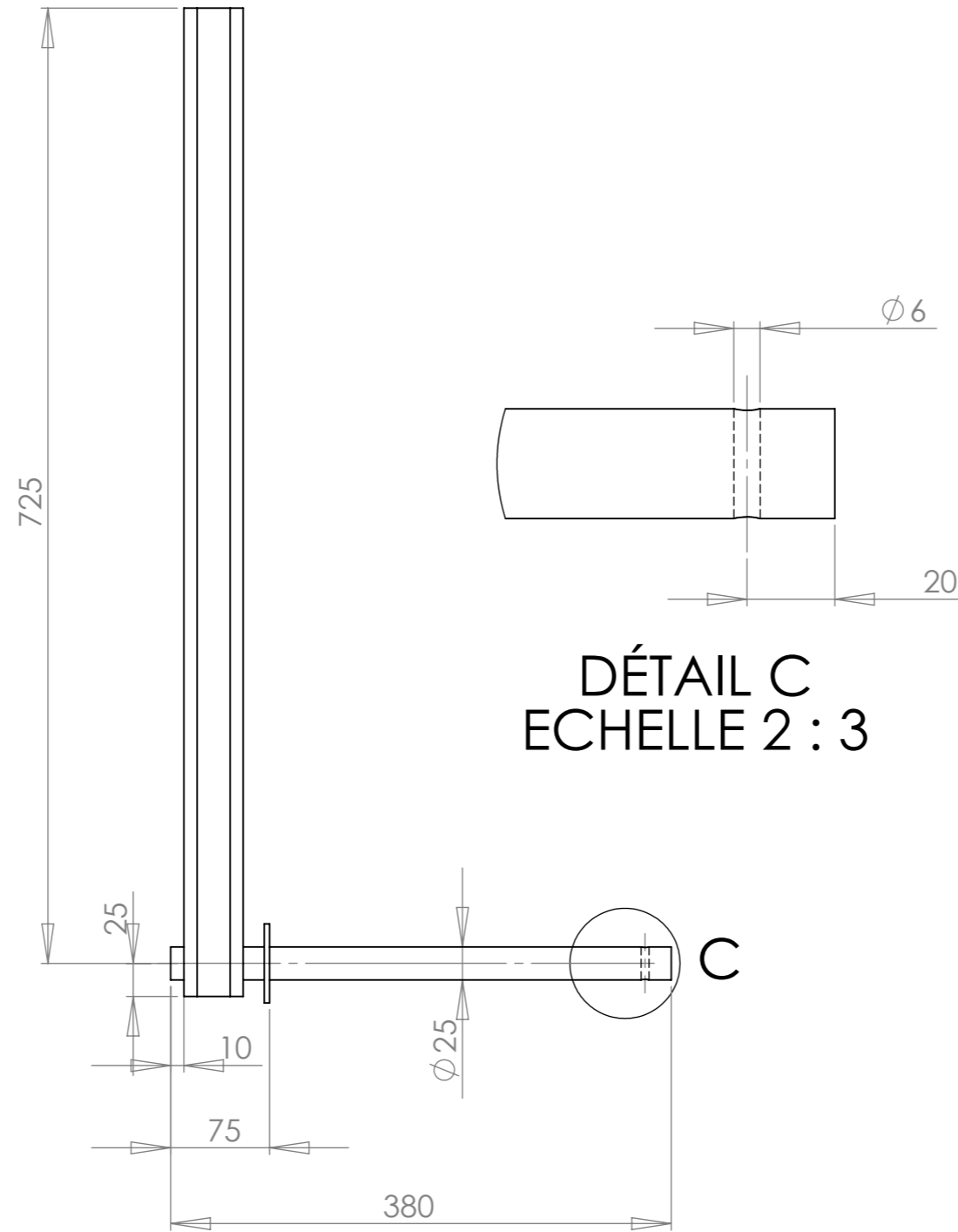
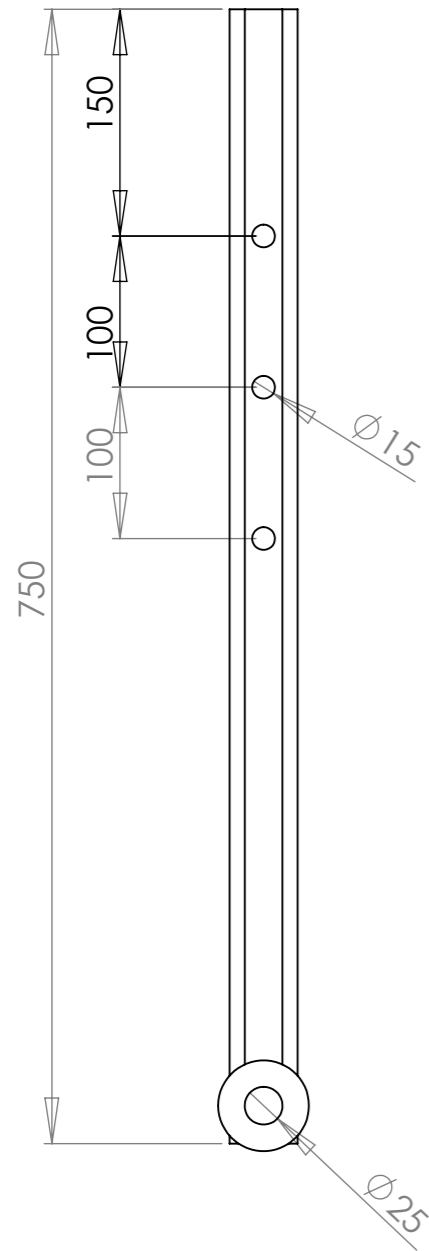
N°	Désignation	Longueur	Qté
G1	tube carré 60 x 6	250	1
G2	Fer plat 50 x 20	180	1
G3	Fer plat 50 x 20	50	2
-	Demi châpe amortisseur		1

Date 12/11/2015

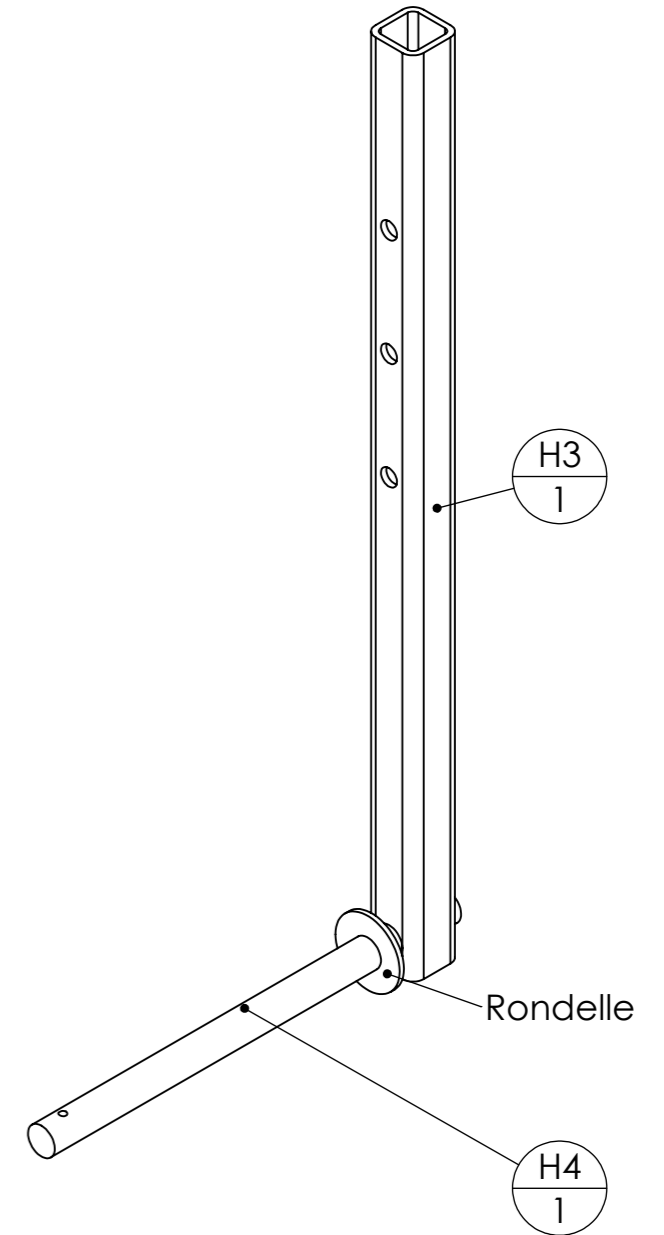
Version 2.0



Outil **Faca Buzuk** Pièce **H - bras de rouleau coté** Qté **2**



DÉTAIL C
ECHELLE 2 : 3



N°	Désignation	Longueur	Qté
H3	tube carré 45 x 5	750	1
H4	étiré rond Ø25	380	1
Rondelle	Rondelle Ø24 série LU		1

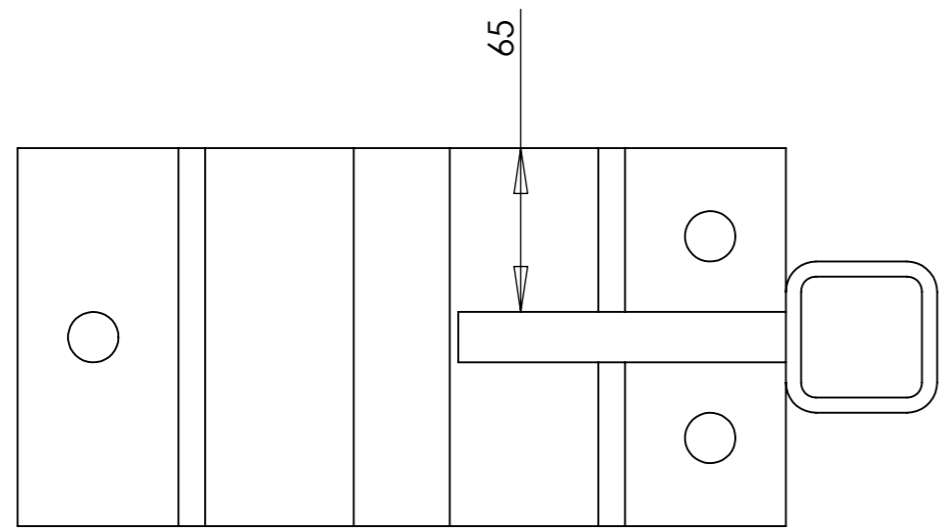
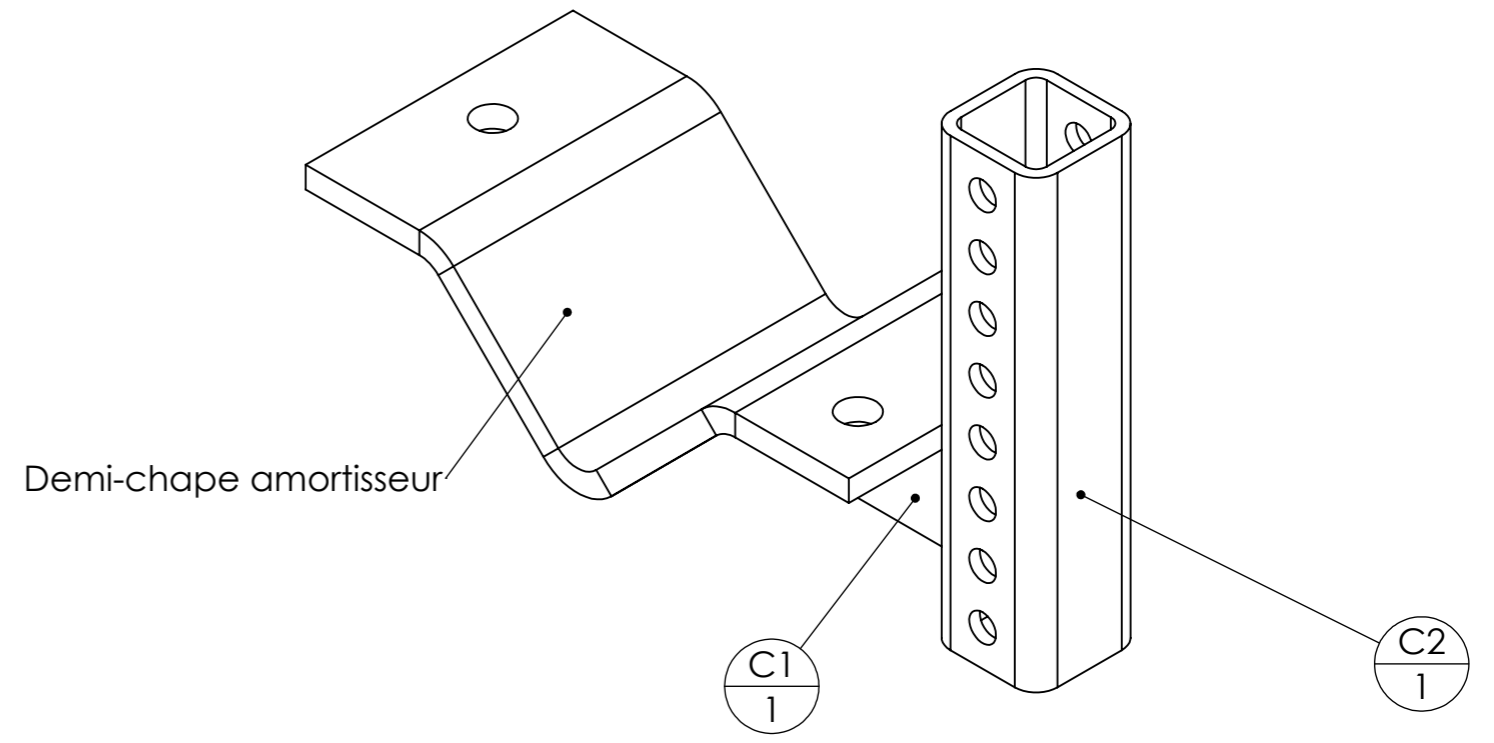
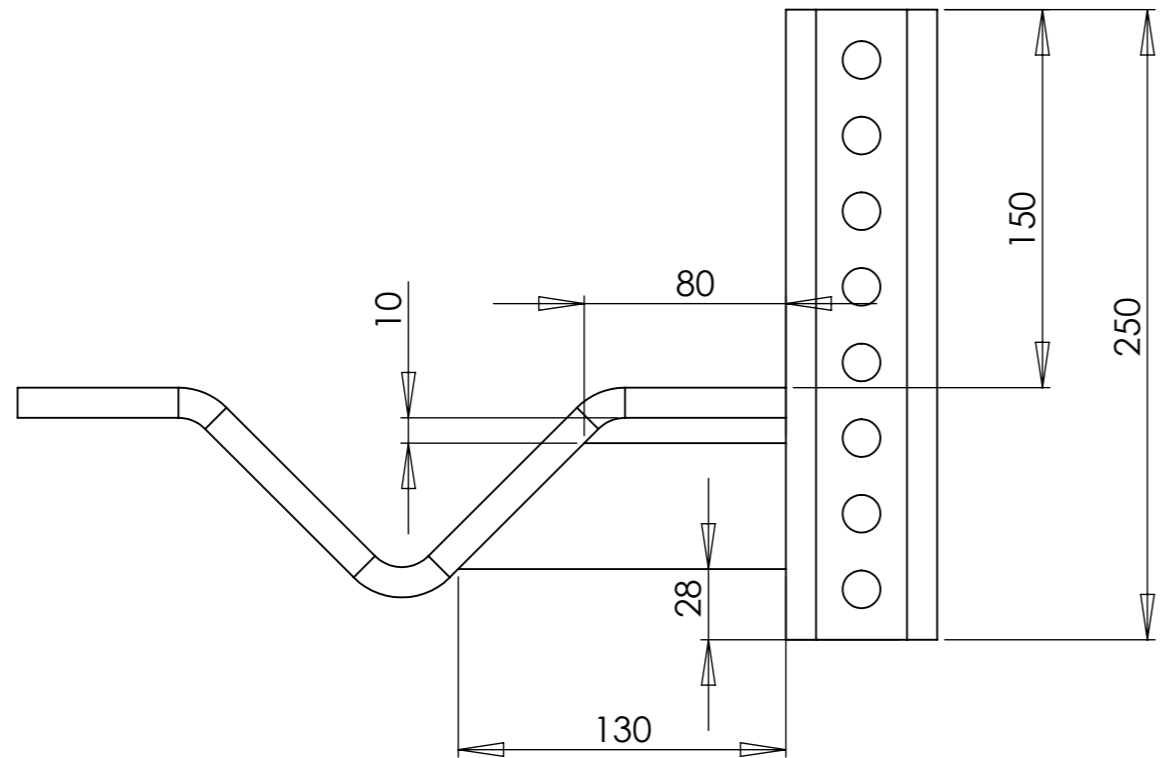
Date 12/11/2015

Version 2.0

Outil **Faca Buzuk**



Pièce **C - Chape rouleau flan** Qté **2**



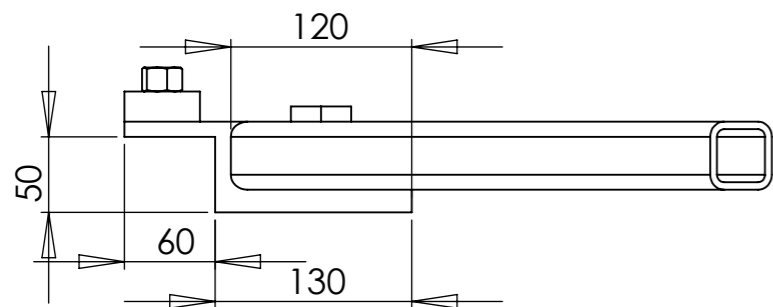
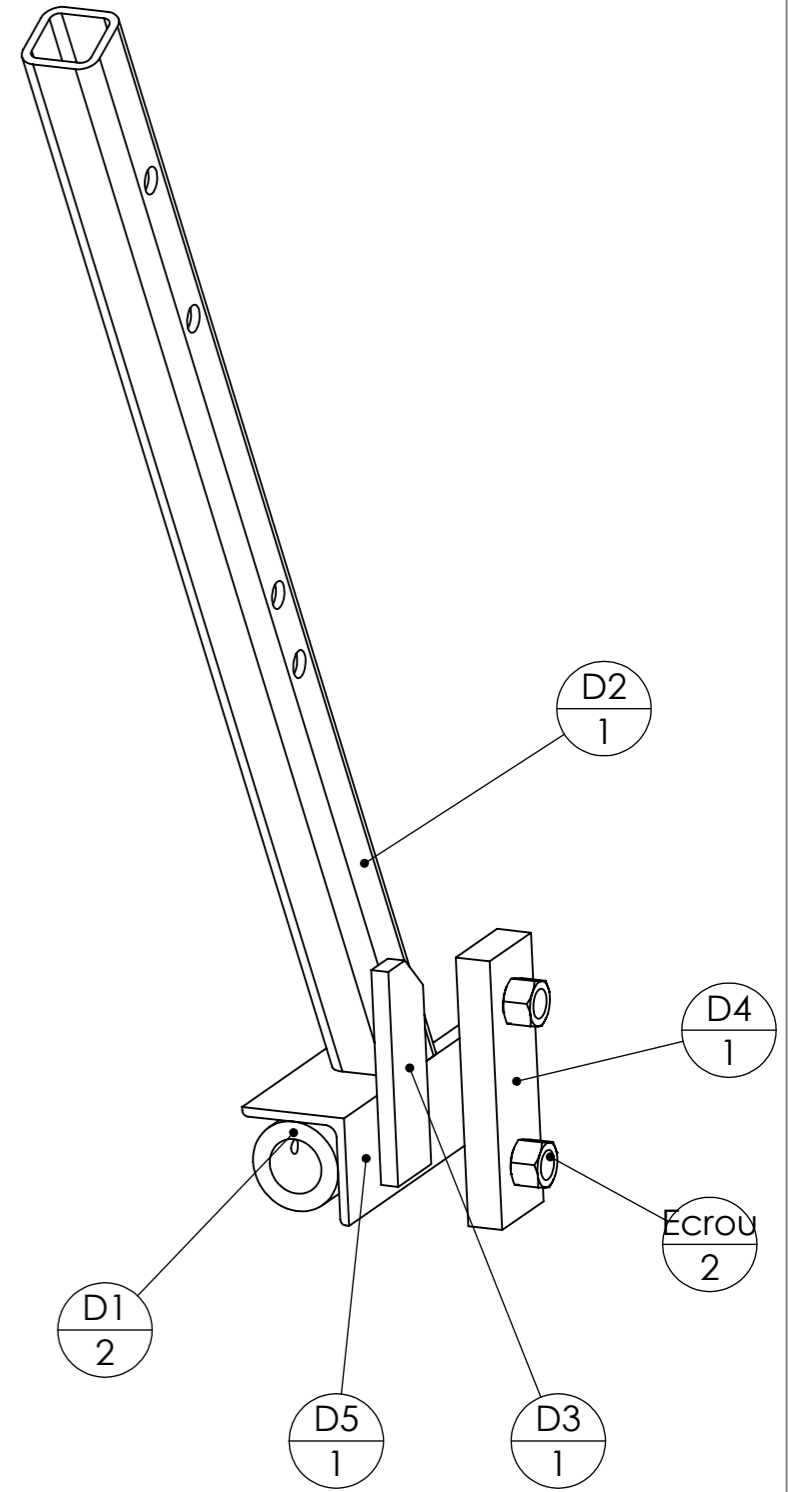
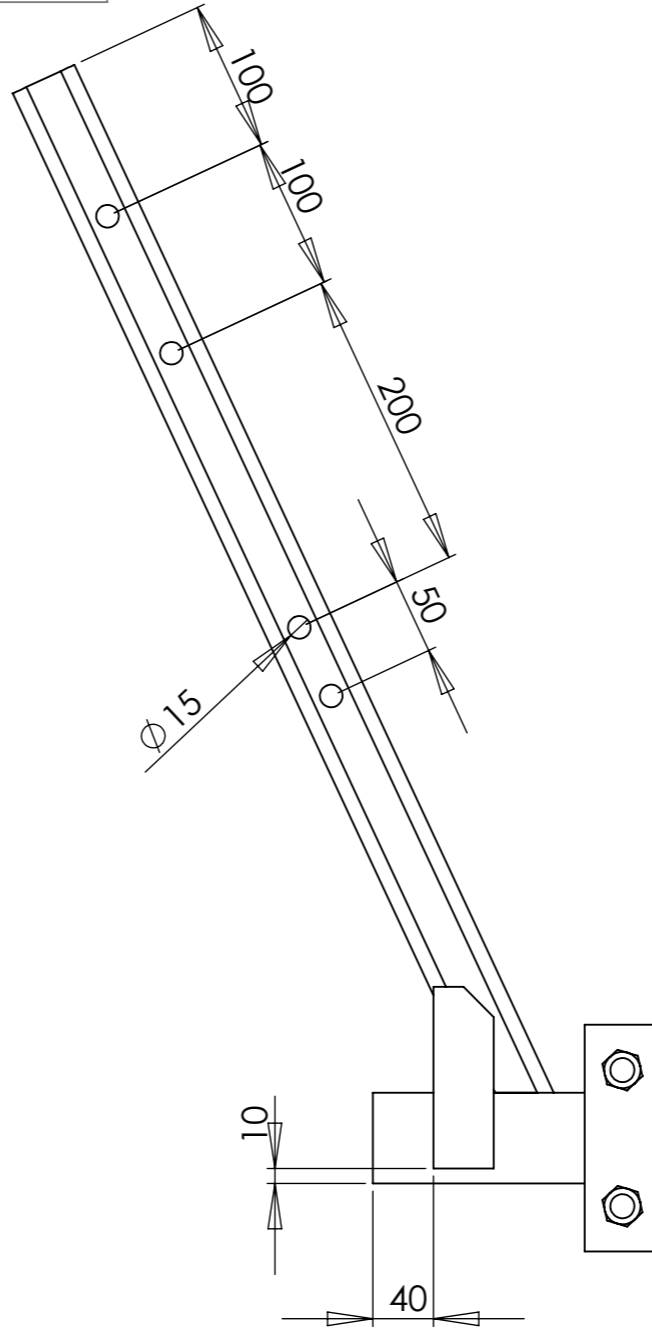
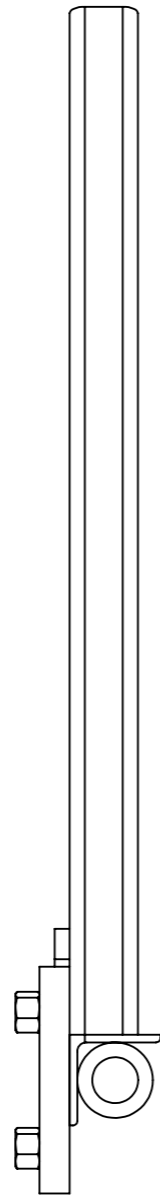
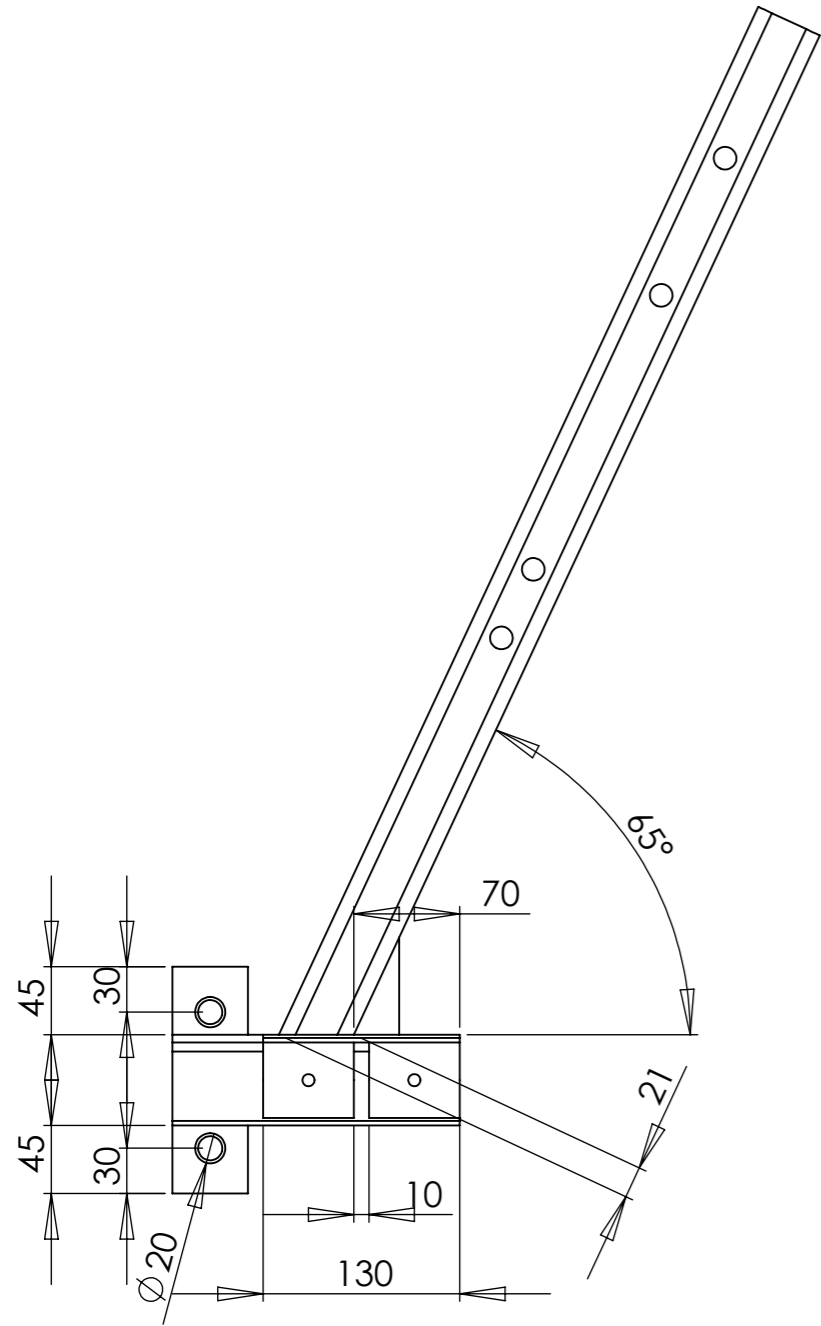
N°	Désignation	Longueur	Qté
C1	Fer plat 50 x 20	130	1
C2	tube carré 60 x 6	250	1
-	Demi chape amortisseur		1

Date 12/11/2015

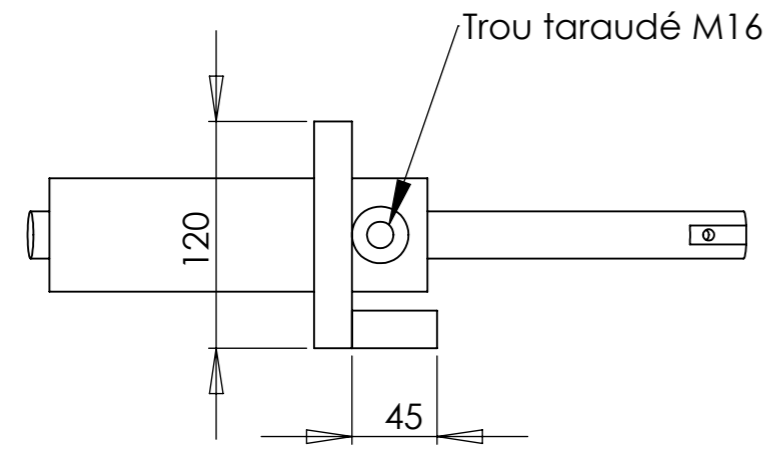
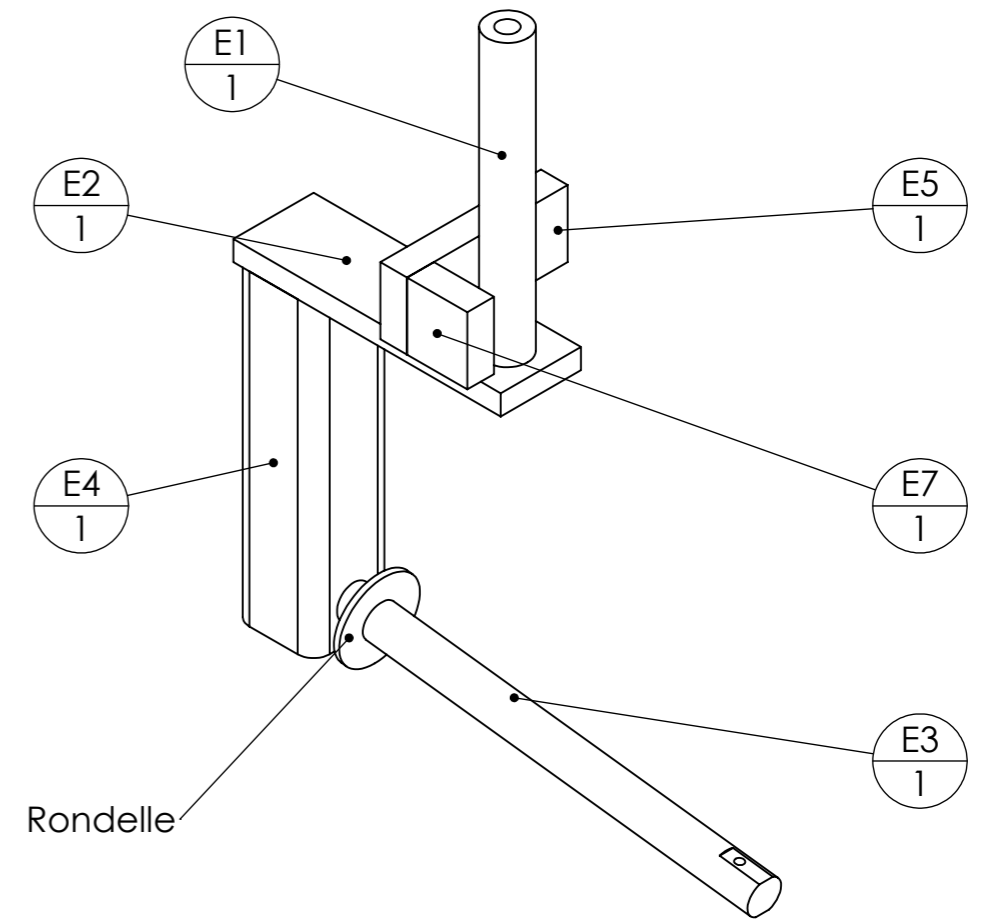
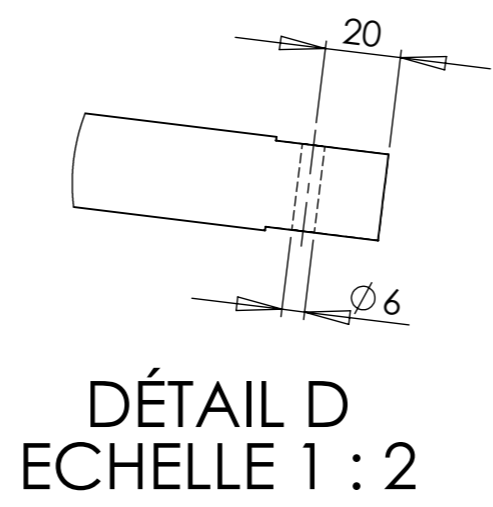
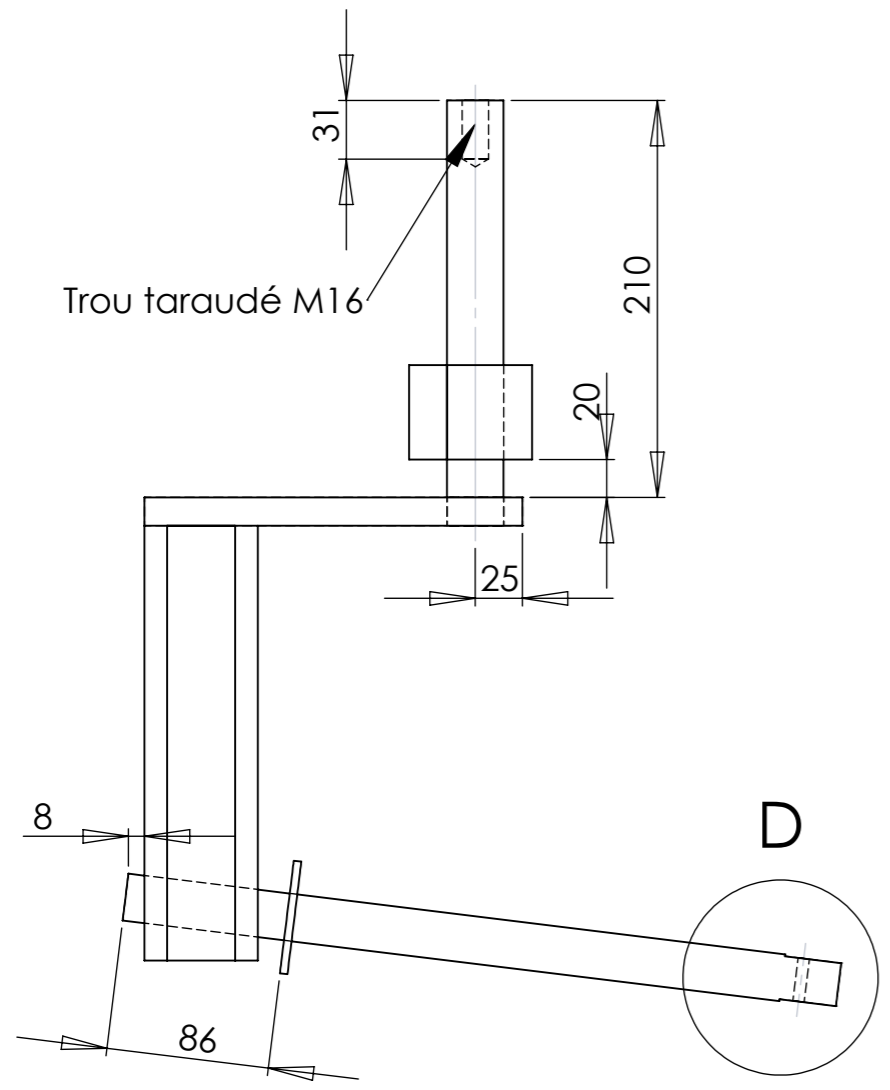
Version 2.0



Outil **Faca Buzuk** Pièce **D - Bras de rouleau flan** Qté **2**



N°	Désignation	Longueur	Qté
D1	Bague tournée \varnothing ext 50 ; \varnothing int 31	60	2
D2	tube carré 45 x 5	750	1
D3	Fer plat 40 x 10	120	1
D4	Fer plat 50 x 20	150	1
D5	Cornière 60 x 60 x 5	190	1
Ecrou	Ecrou M18		2



N°	Désignation	Longueur	Qté
E1	étiré rond Ø30	225	1
E2	Fer plat 60 x 15	200	1
E3	étiré rond Ø25	380	1
E4	tube carré 60 x 6	230	1
E5	Fer plat 50 x 20	120	1
E7	Fer plat 50 x 20	45	1
-	Rondelle Ø24 série LU		1

Date 12/11/2015

Version 2.0

Outil **Faca Buzuk**



Pièce **Coupelle rouleau**

Qté 12

Coupelle toile laser pour rouleau faca Ø300 ep6

ACIER S235 - EPAISSEUR 6mm

