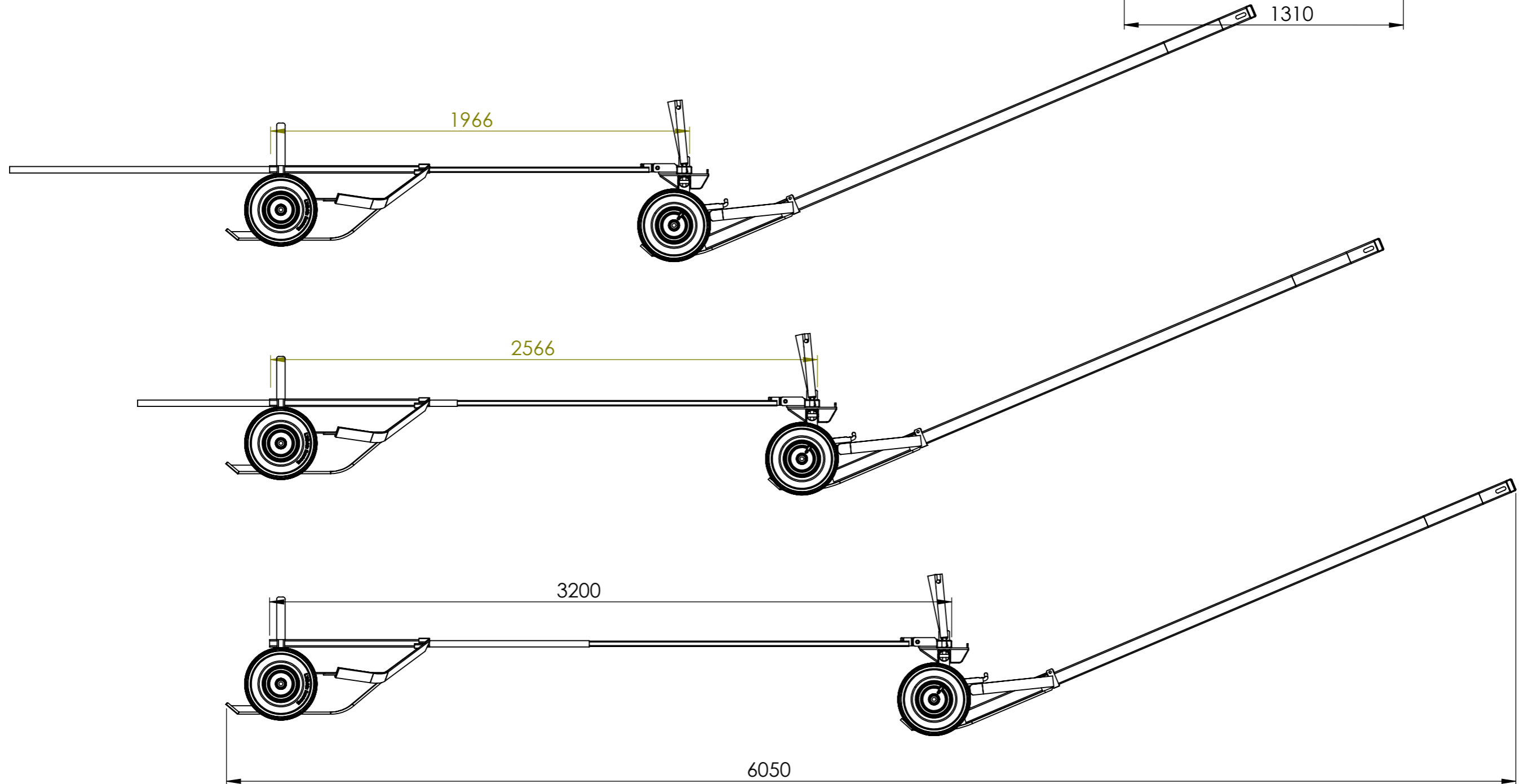
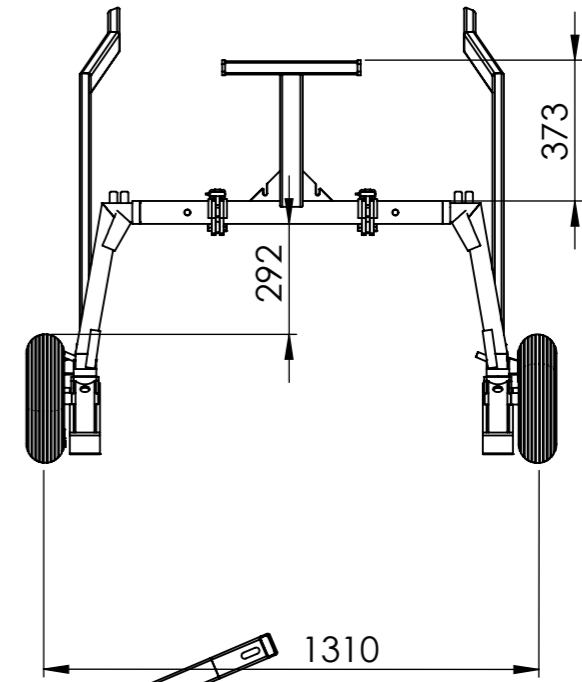
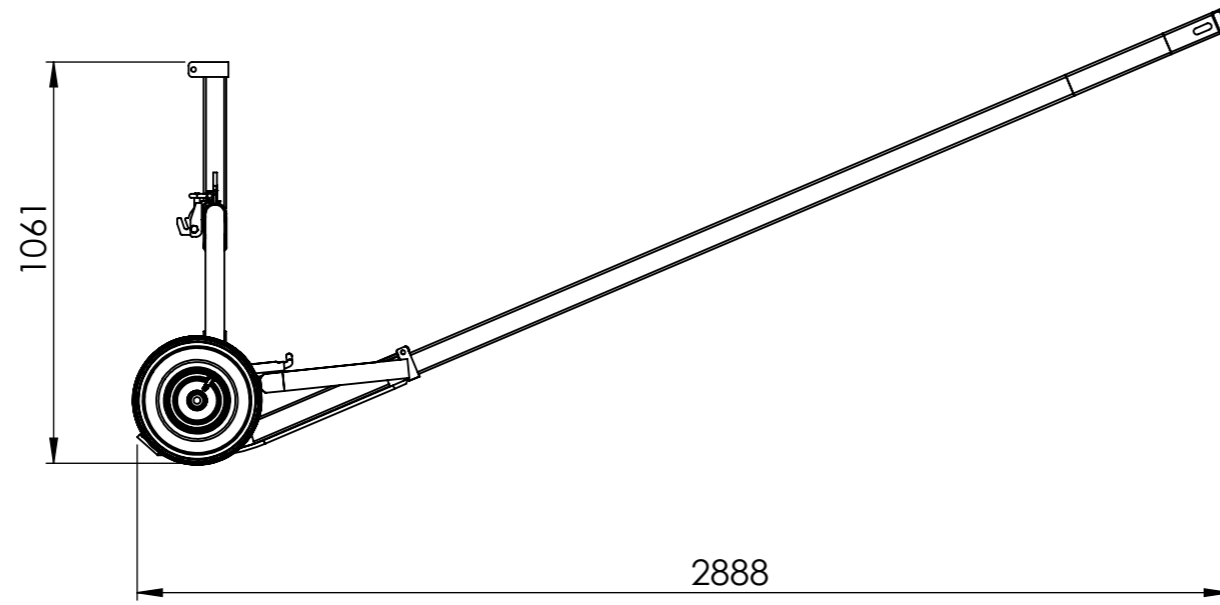


Version	1.0	Qté	1
Date	17/02/2015		
Outil	Porteur		
Pièce	Nomenclature générale		

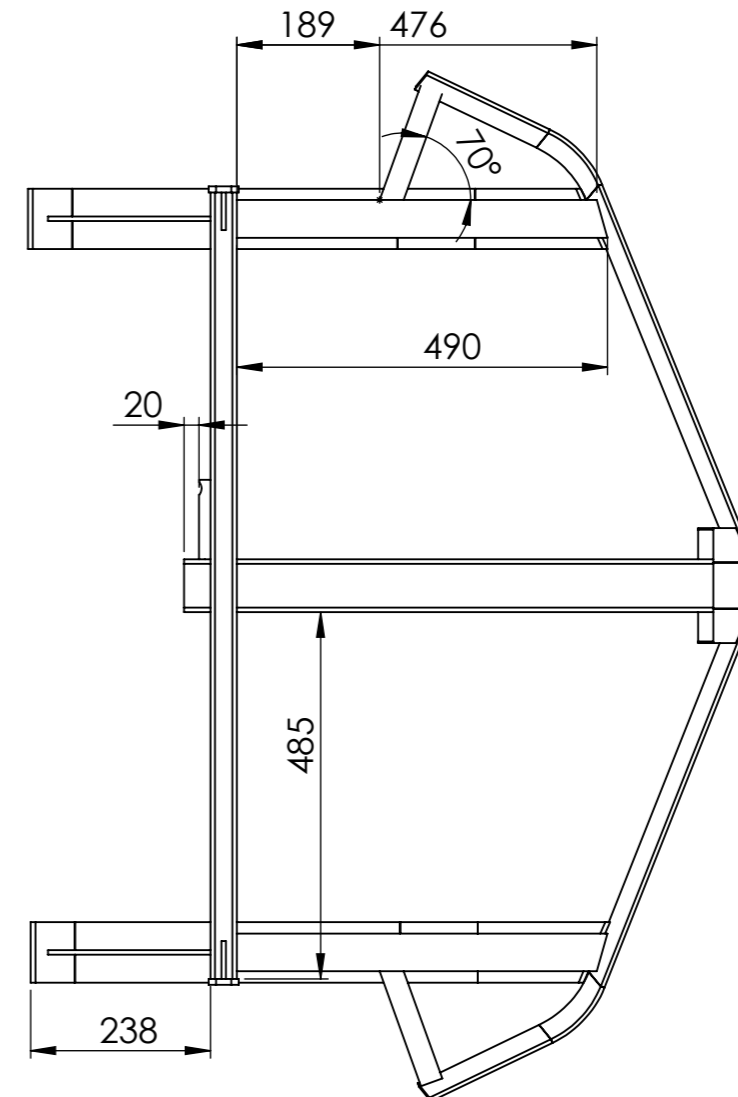
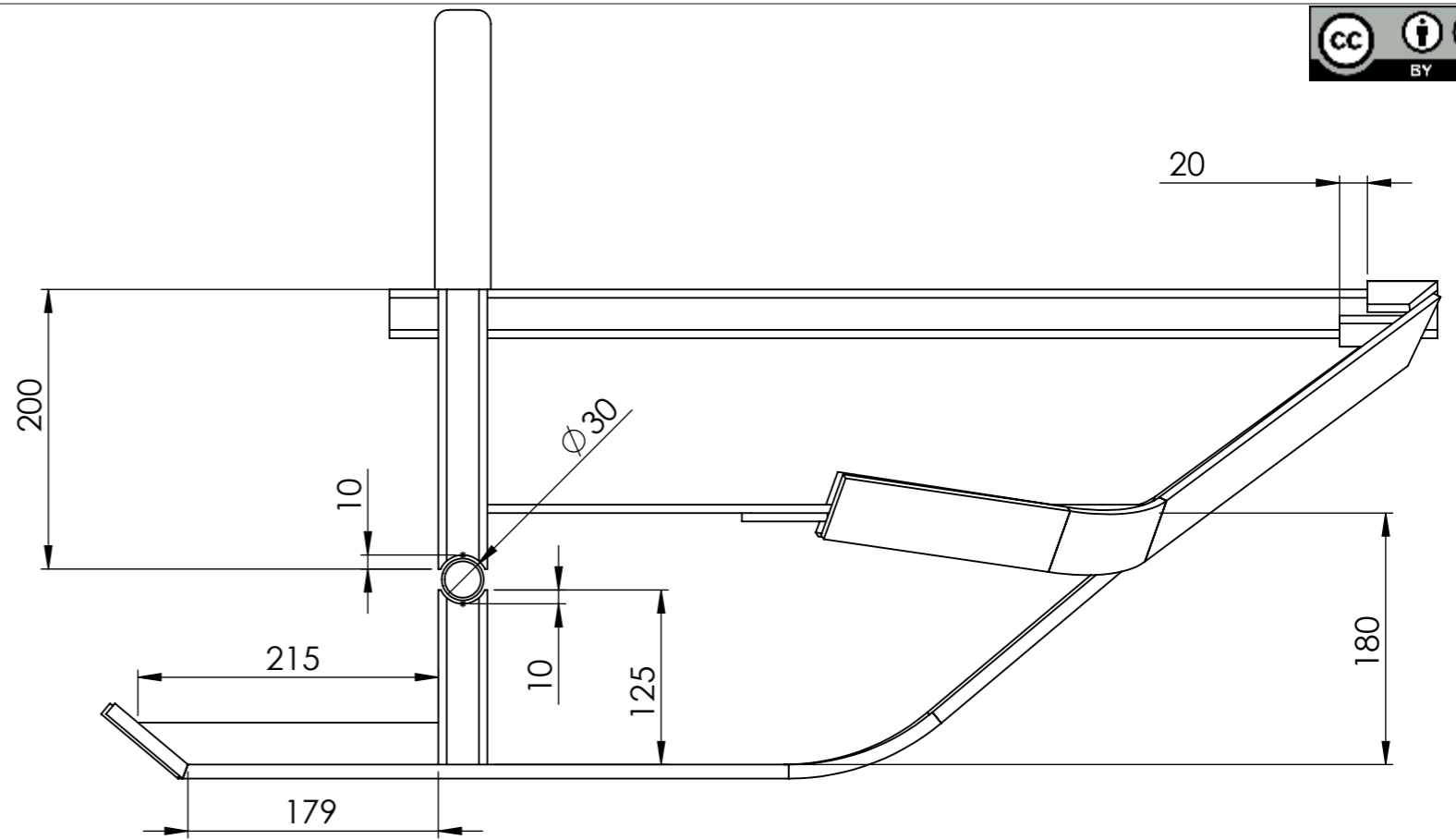
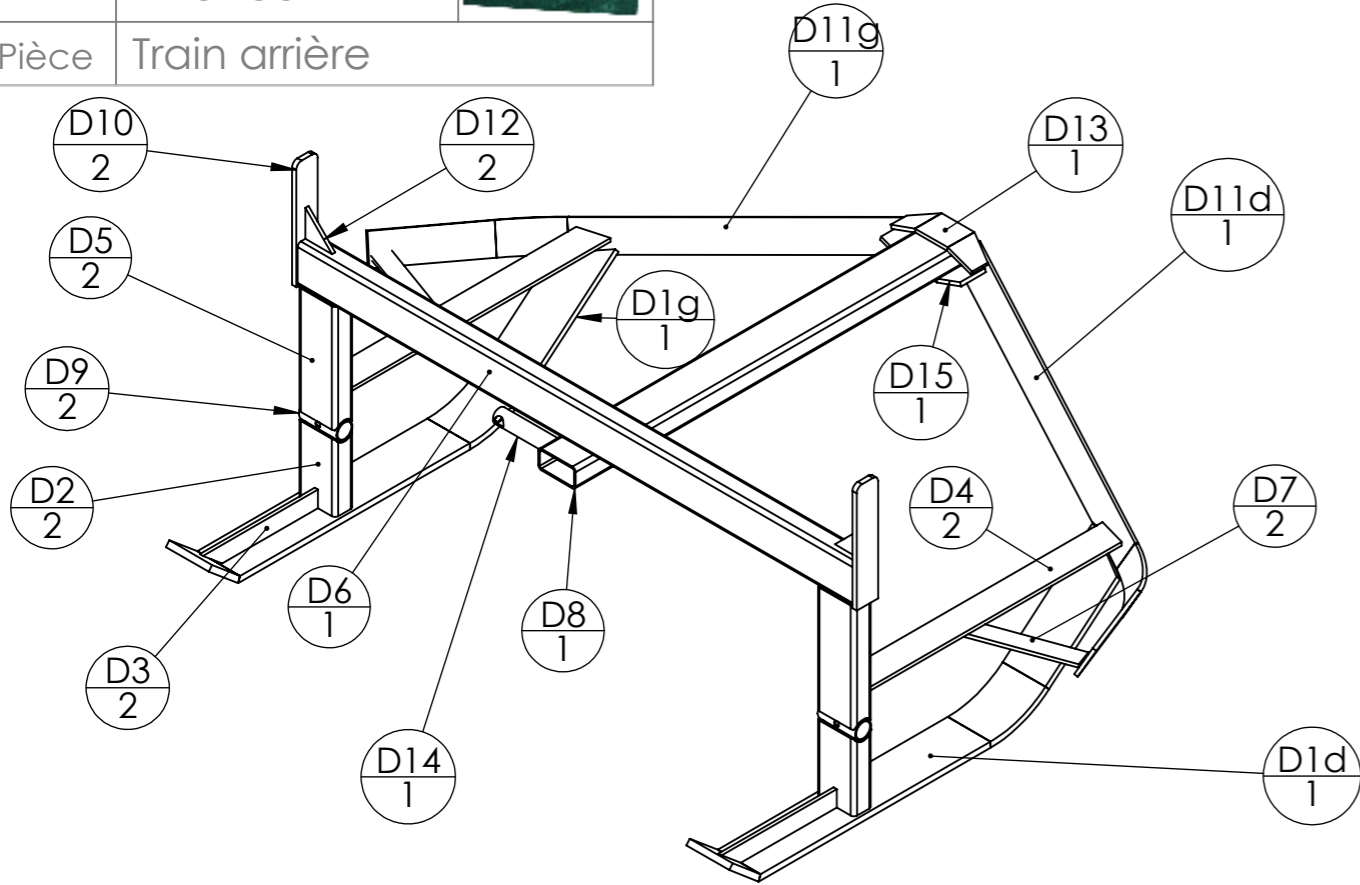


N°	Désignation	Qté
1	Patin droit (A)	1
2	Patin gauche (A)	1
3	Brancard droit (B)	1
4	Brancard gauche (B)	1
5	Train arriere (D)	1
6	Longeron (E)	1
7	Essieu avant (F)	1
8	Tourelle (G)	1
10	Arche (H)	-
11	Ridelle avant (M)	2
12	Potence (N)	-


Version	1.0	Qté	1
Date	17/02/2015		
Outil	Porteur		
Pièce	Encombrement		



Version	1.0	Qté	1
Date	17/02/2015		
Outil	Porteur		
Pièce	Train arrière		

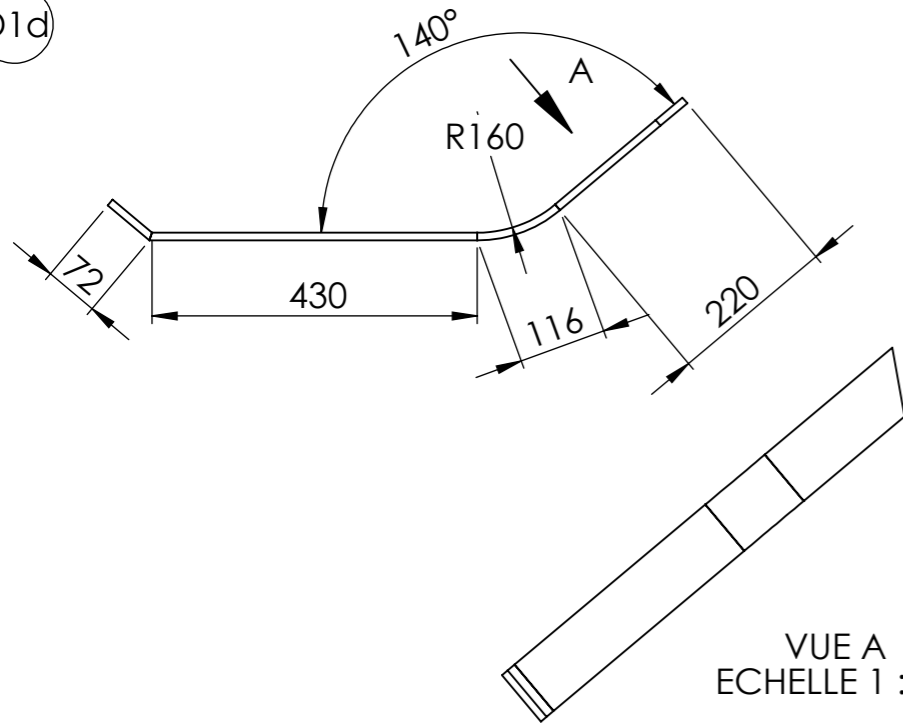


N°	Désignation	Longueur	Qté
D2	Tube rectangulaire 70 x 35 x 3	125	2
D3	Fer plat 30 x 6	215	2
D4	Fer plat 50 x 6	490	2
D5	Tube rectangulaire 70 x 35 x 3	200	2
D6	Tube rectangulaire 70 x 35 x 3	1040	1
D7	Fer plat 30 x 6	180	2
D8	Tube rectangulaire 70 x 35 x 3	750	1
D9	Tube rond 30 x 2	70	2
D1g	Fer plat 80 x 10	837	1
D1d	Fer plat 80 x 10	837	1
D13	Fer plat 50 x 6	156	1
D15	Fer plat 50 x 6	60	1
D14	Tube rond 25 x 2	105	1
D10	Fer plat 40 x 8	200	2
D12	Fer plat 50 x 6	50	2
D11d	Fer plat 50 x 6	831	1
D11g	Fer plat 50 x 6	831	1

Version	1.0	Qté	1	
Date	17/02/2015			
Outil	Porteur			
Pièce	Train arrière			

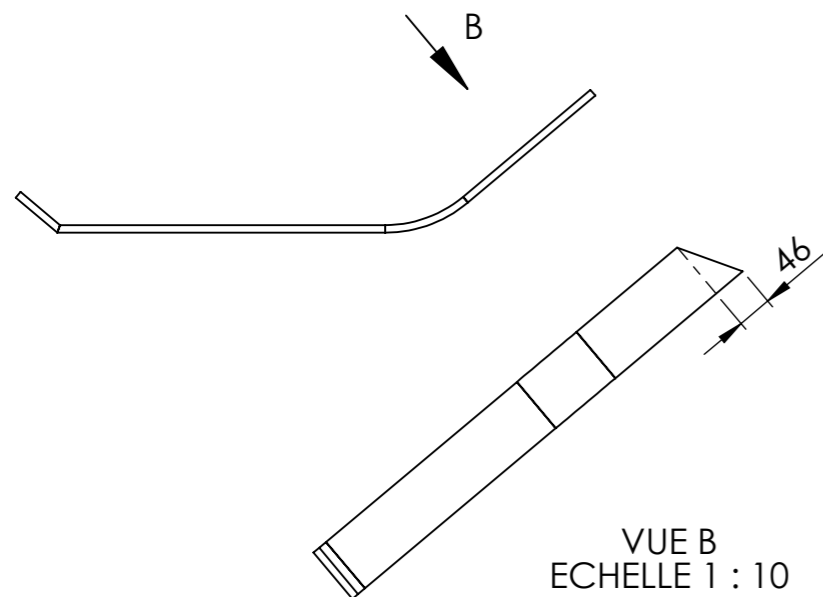


D1d

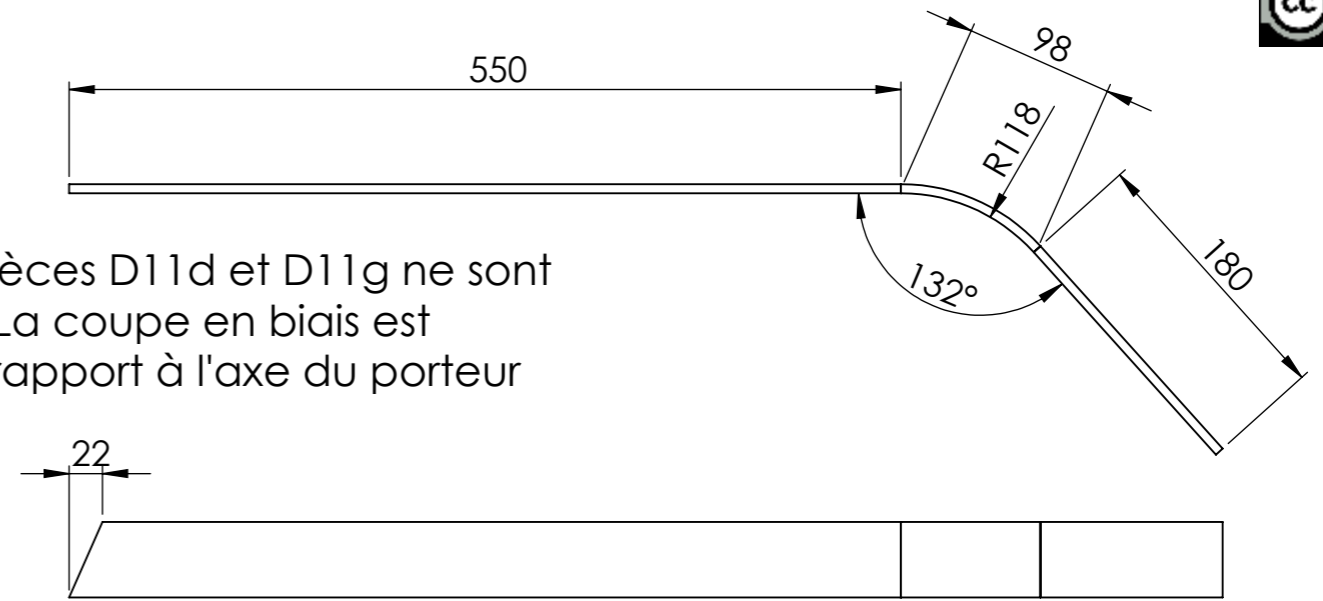


D1g

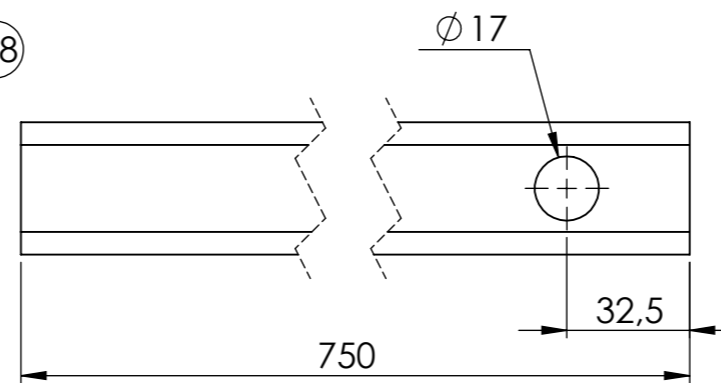
Attention : les pièces D1d et D1g ne sont pas identiques. La coupe en biais est symétrique par rapport à l'axe du porteur



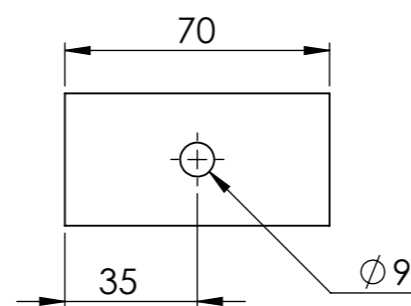
D11d



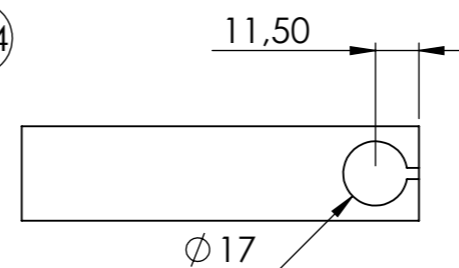
D8



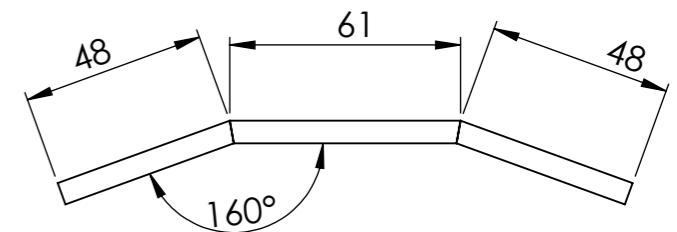
D9



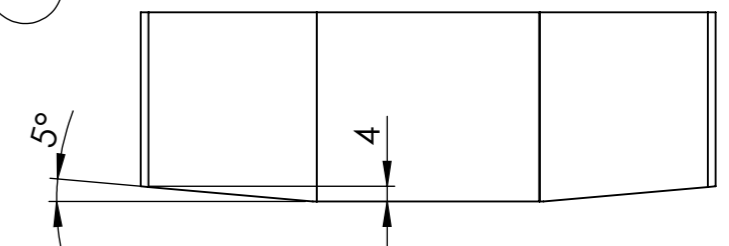
D14



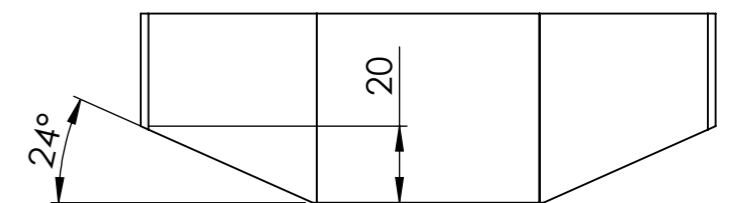
Les pièces D13 et D15 ont le même profil de pliage. Seul l'angle de coupe est différent



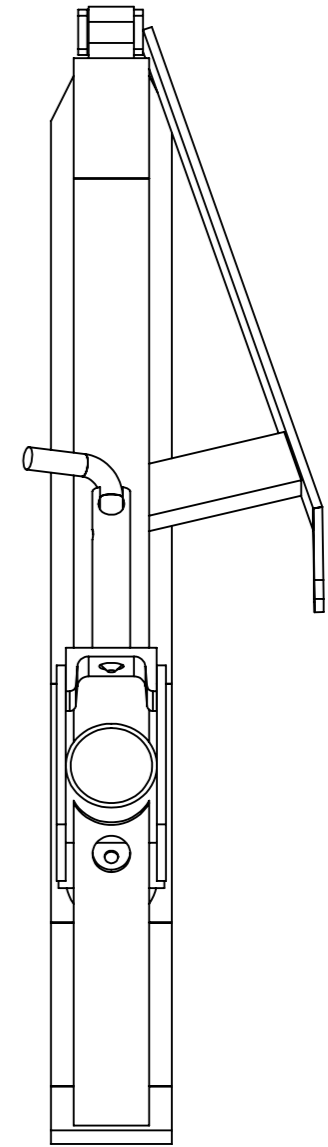
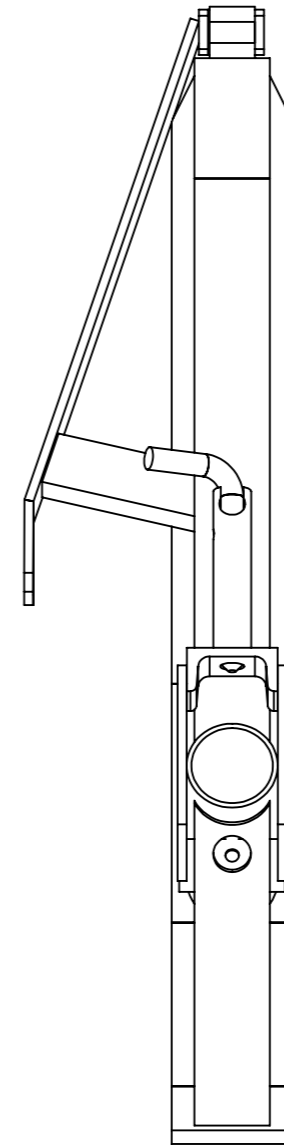
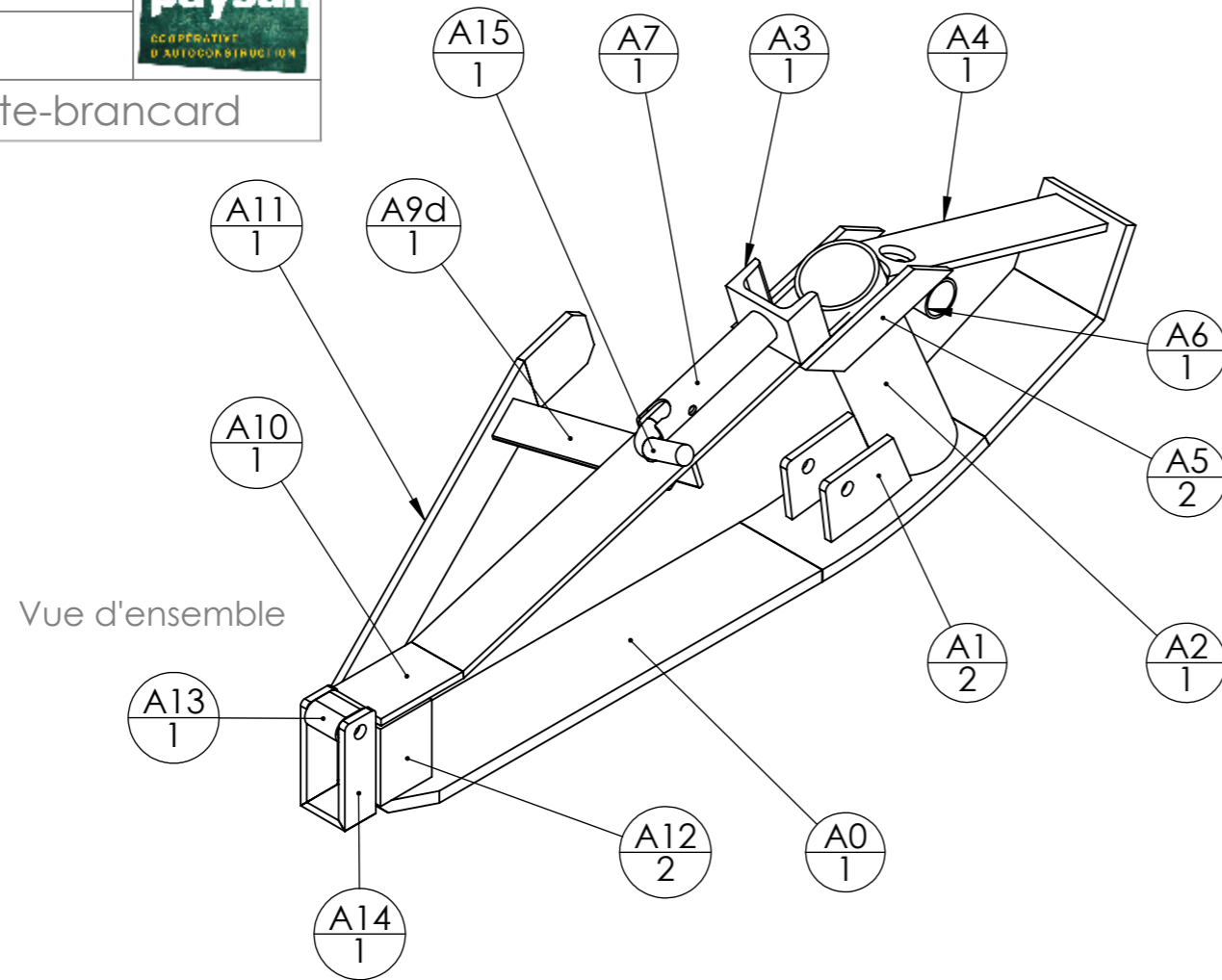
D15



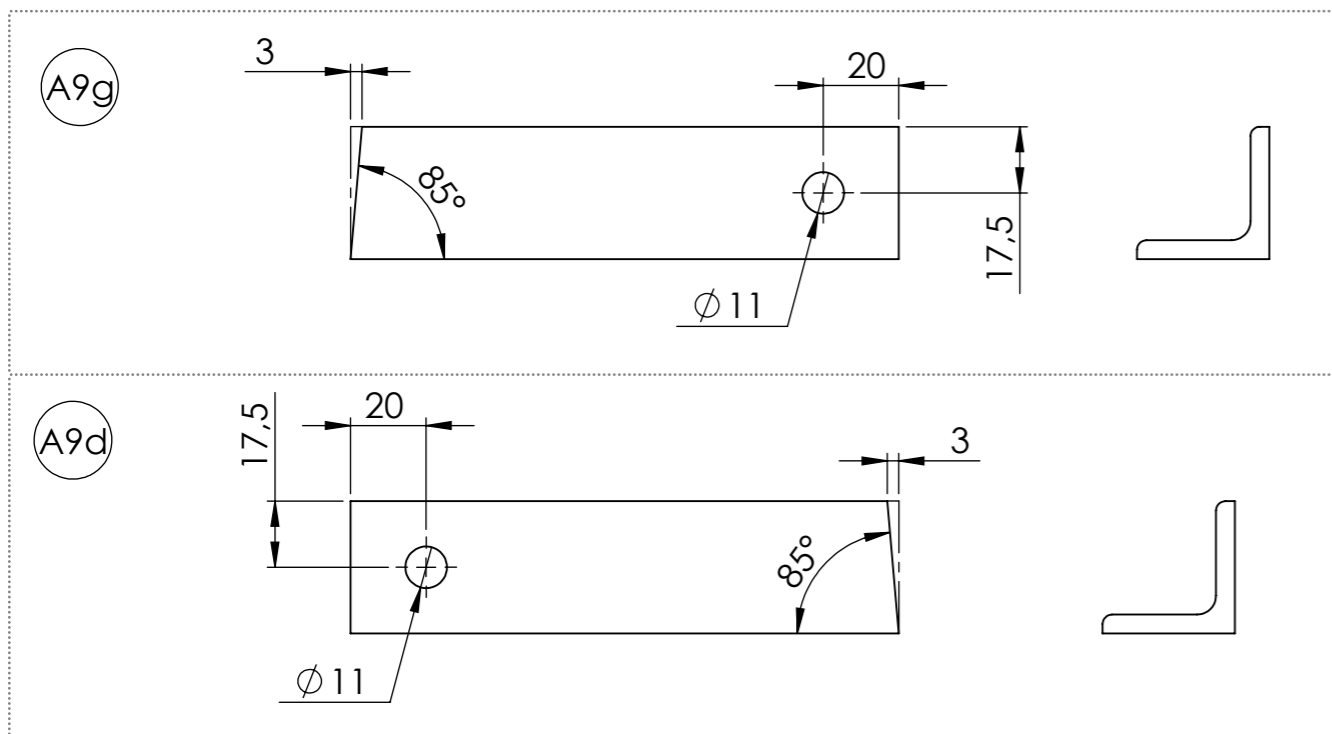
D13



Version	1.0	Qté	1
Date	17/02/2015		
Outil	Porteur		
Pièce	Patin porte-brancard		

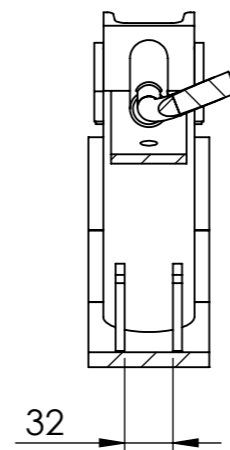
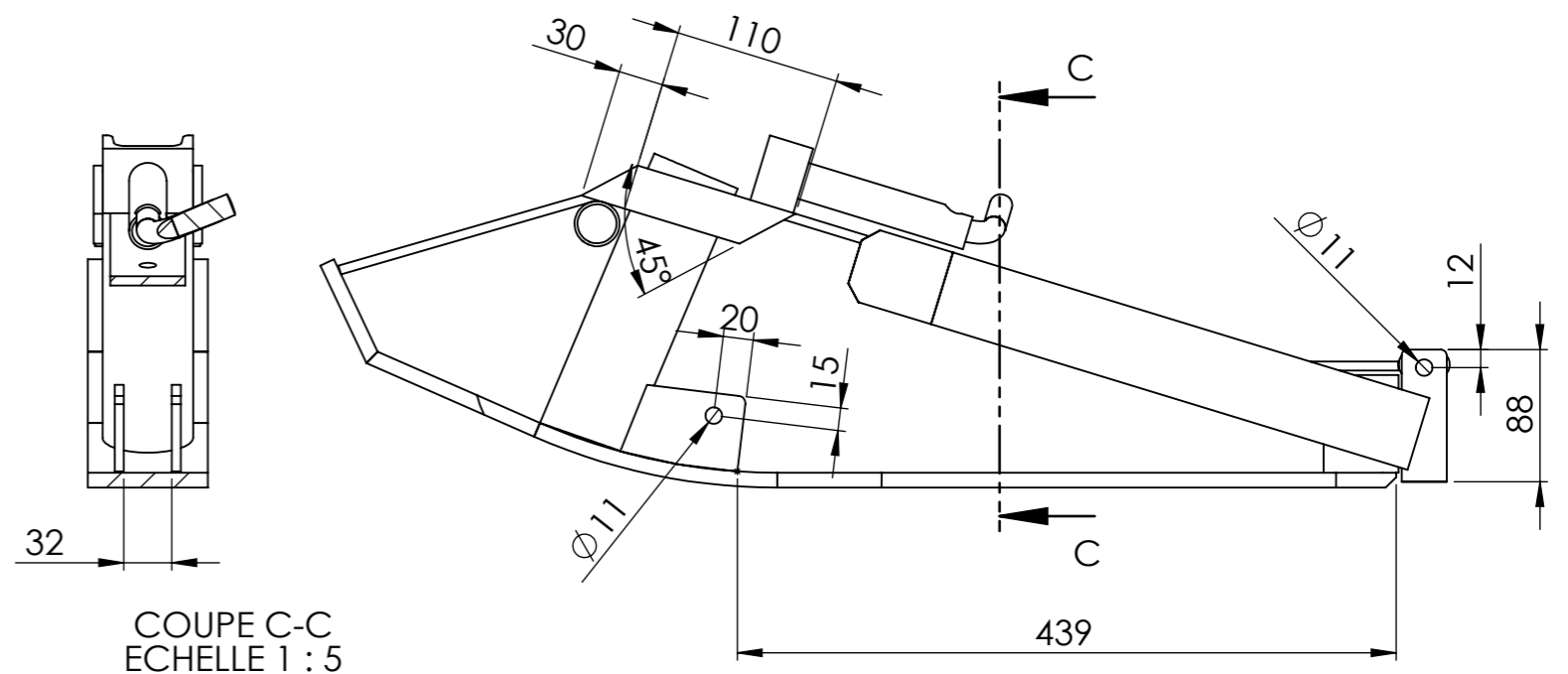
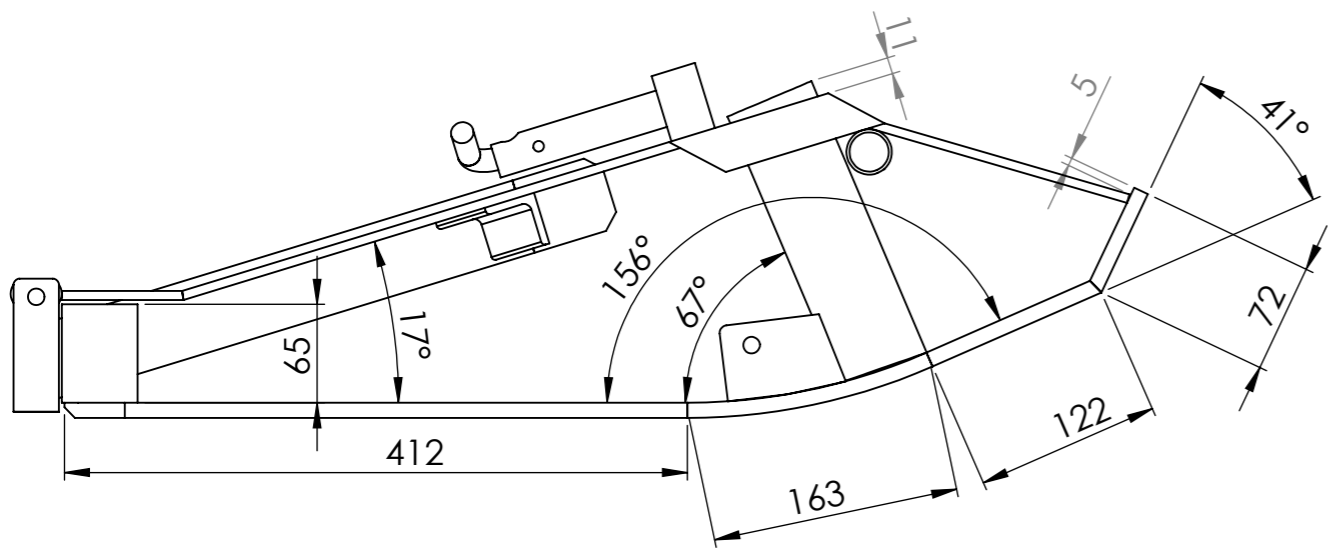
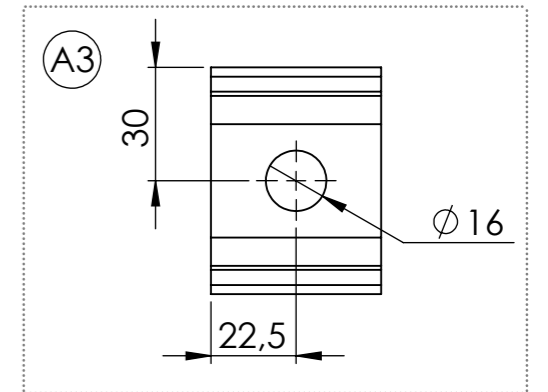
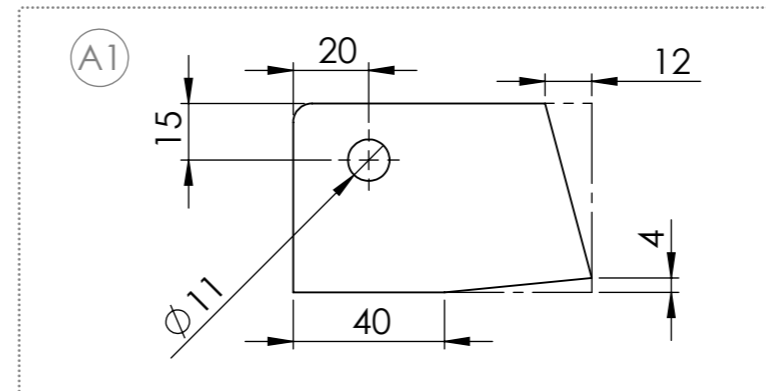
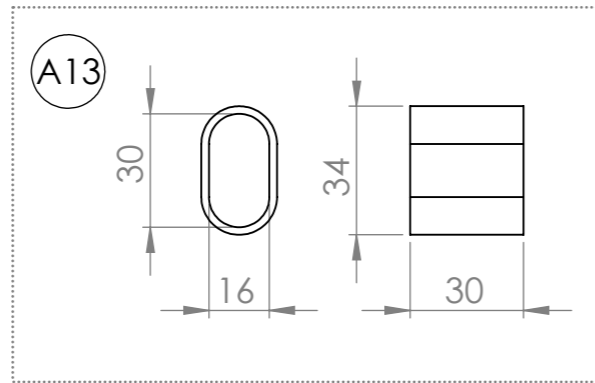
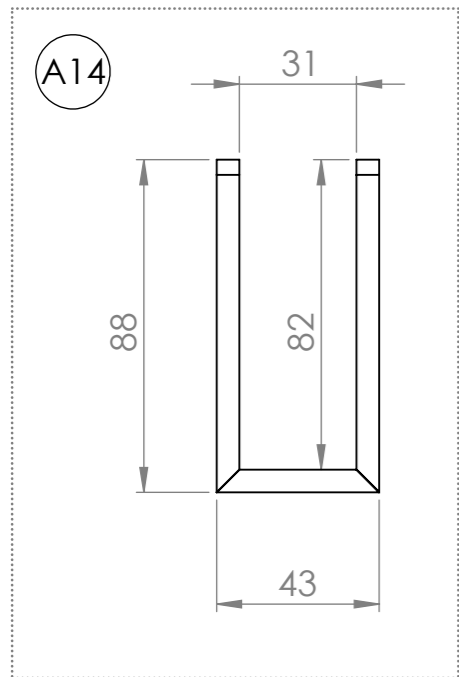
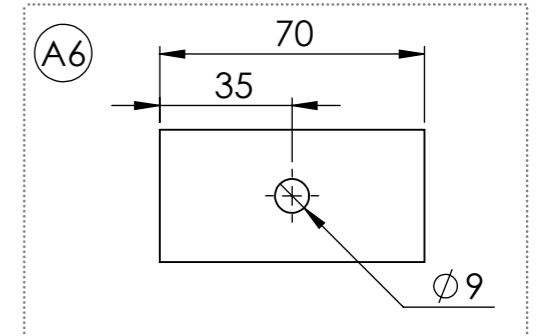
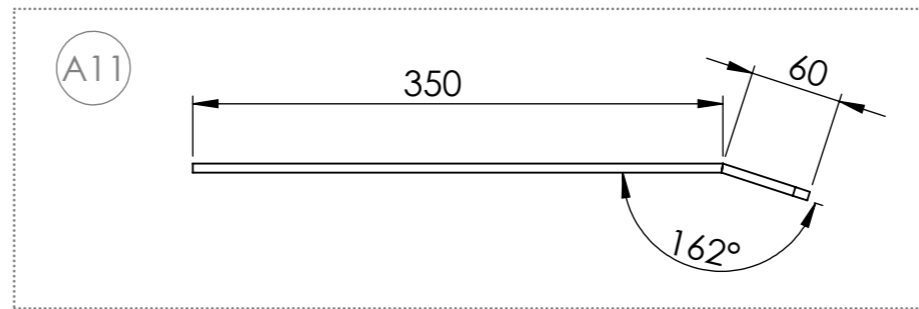
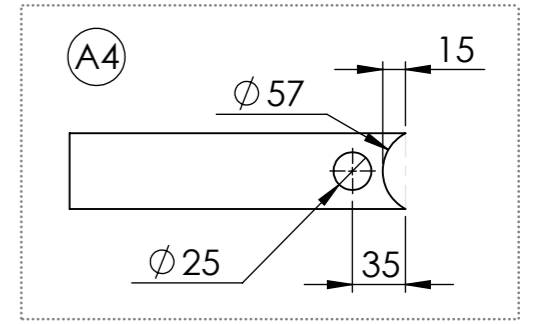
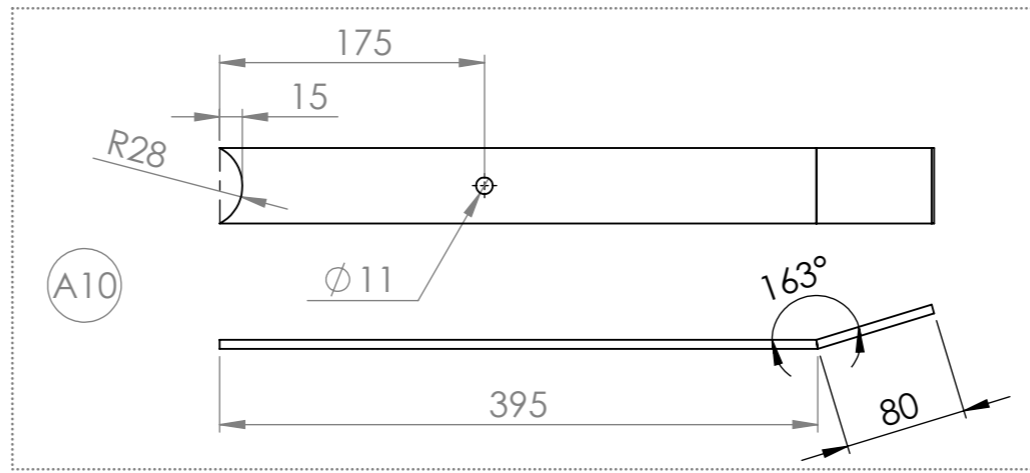
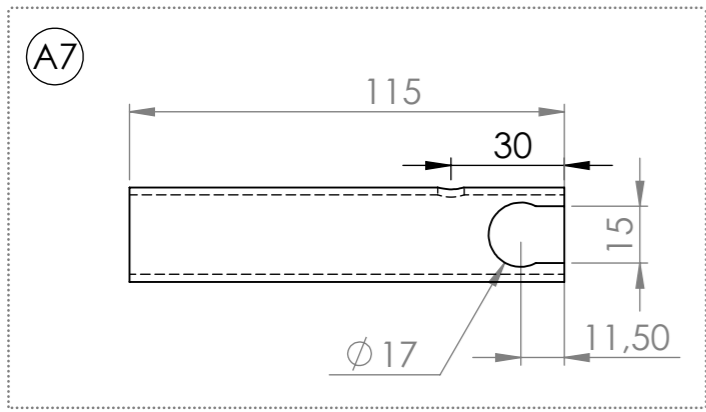


Les patins gauche et droit sont symétriques et leurs pièces sont toutes identiques sauf A9g et A9d



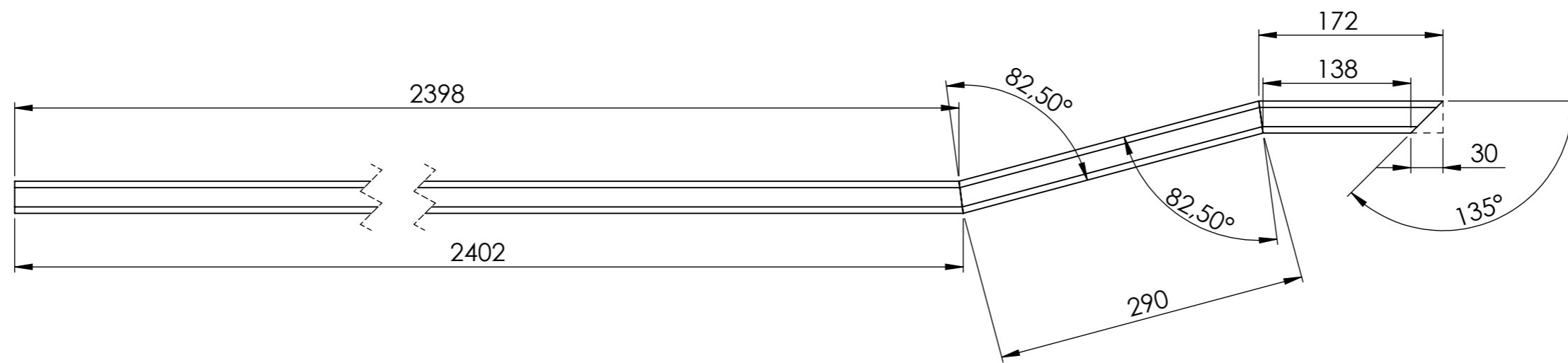
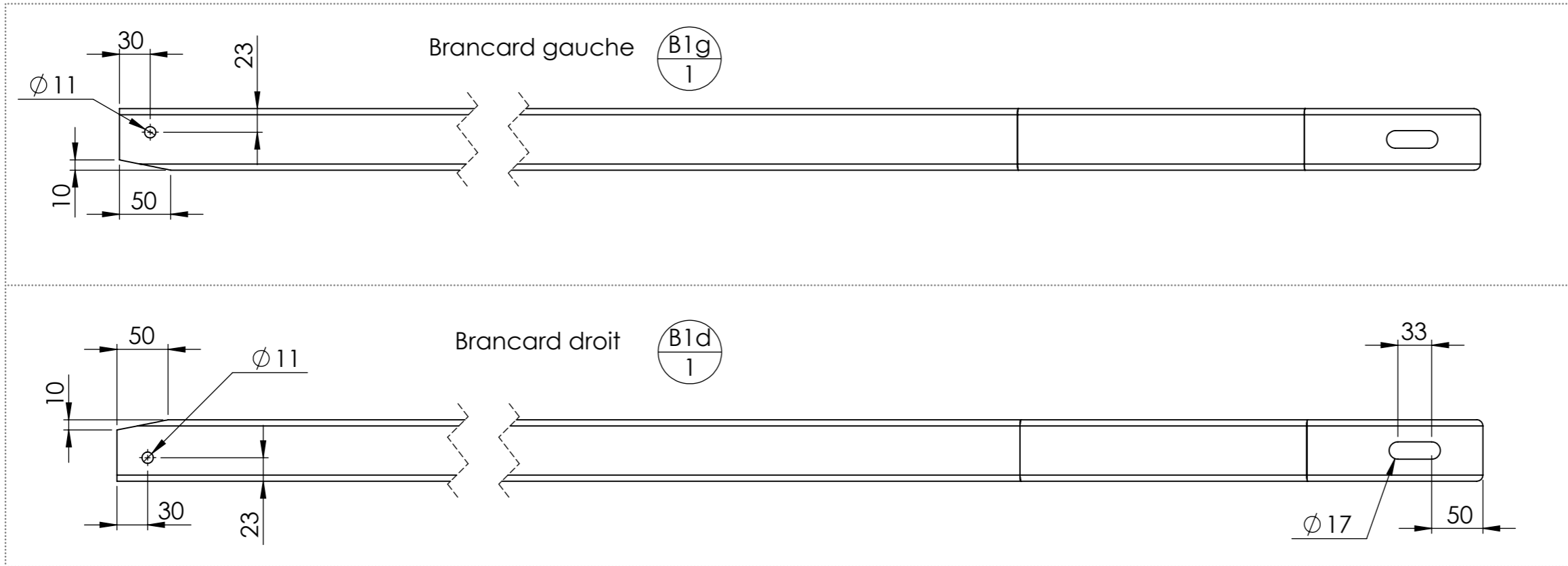
N°	Désignation	Longueur	Qté
A2	Tube rond 60.3 x 3.2	195	1
A0	Fer plat 80 x 10	766.646	1
A1	Fer plat 50 x 6	80	2
A5	Fer plat 30 x 6	140	2
A3	UPN 60 x 30 x 6	45	1
A7	Tube rond 25 x 2	115	1
A15	étiré rond Ø15	140	1
A9d	Cornière 35 x 35 x 5	145	1
A10	Fer plat 50 x 6	475	1
A11	Fer plat 50 x 6	410	1
A12	Fer plat 50 x 6	65	2
A4	Fer plat 40 x 3	222	1
A6	30 x 2	70	1
A13	Tube rond 25 x 2	30	1
A14	Fer plat 30 x 6	37	1

Version	1.0	Qté	1	
Date	17/02/2015			
Outil	Porteur			
Pièce	Patin porte-brancard droit			



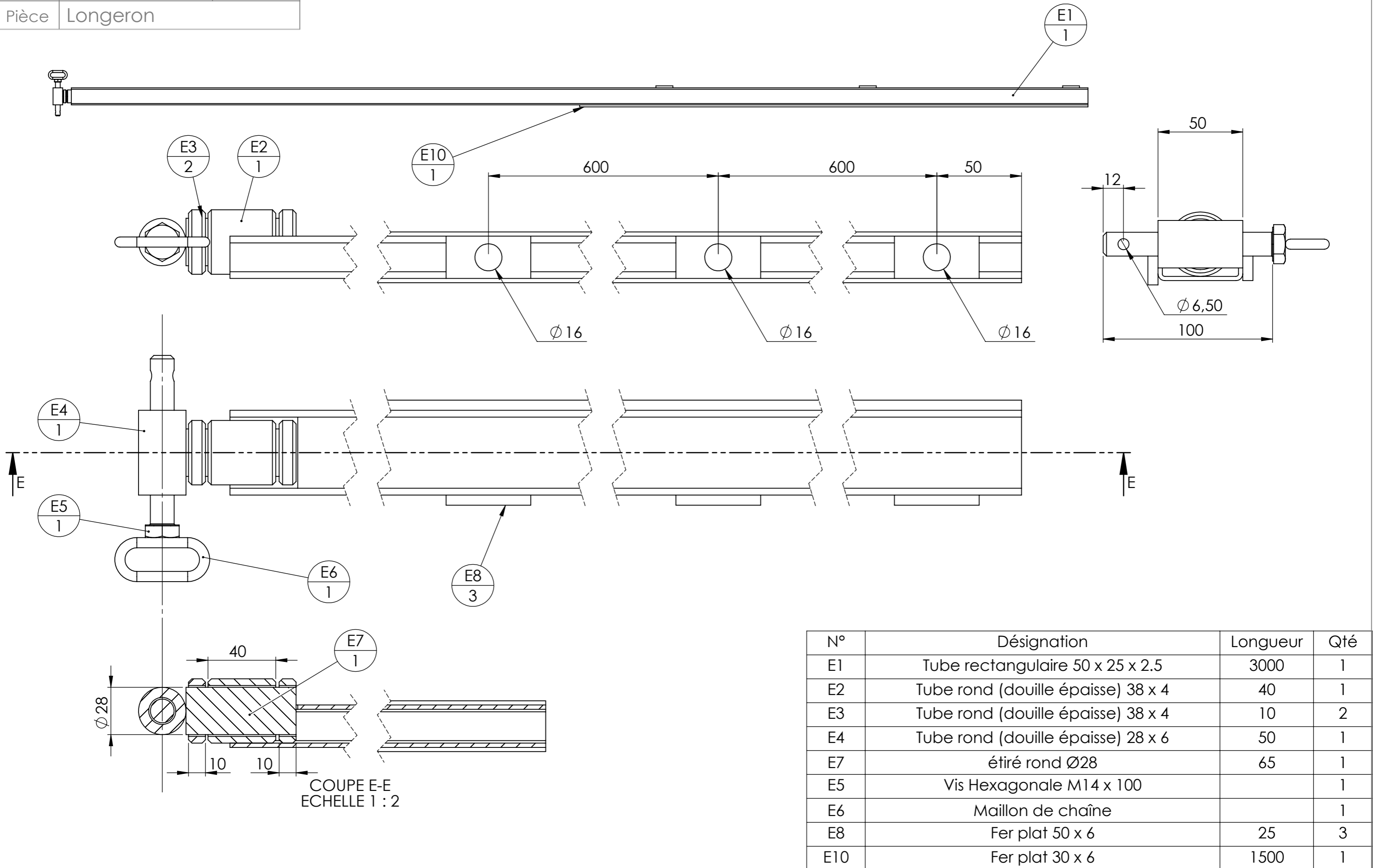
COUPE C-C  
ECHELLE 1 : 5

Version	1.0	Qté	2
Date	17/02/2015		
Outil	Porteur		
Pièce	Brancard		

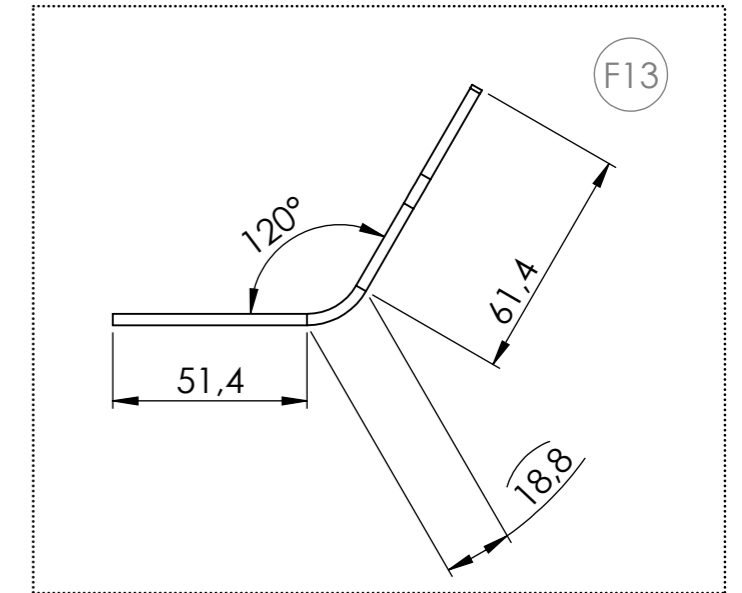
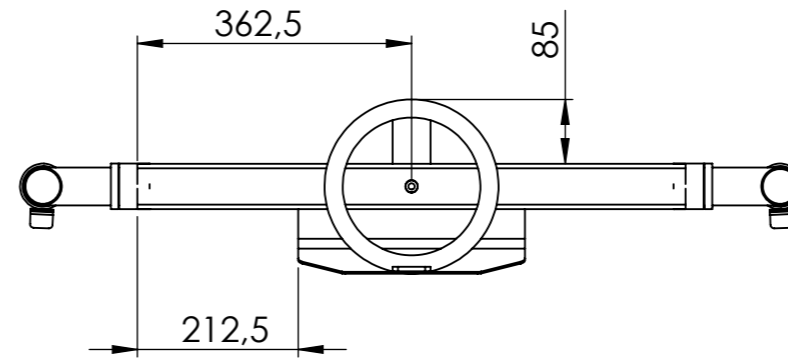
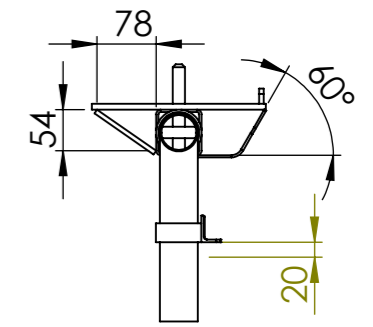
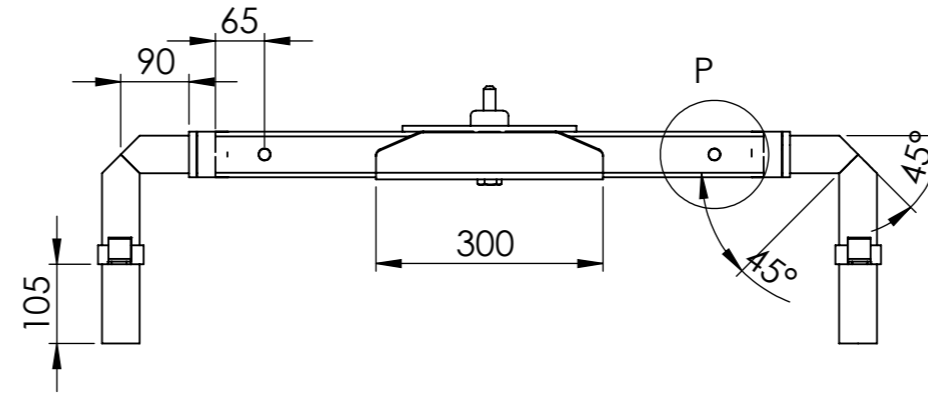
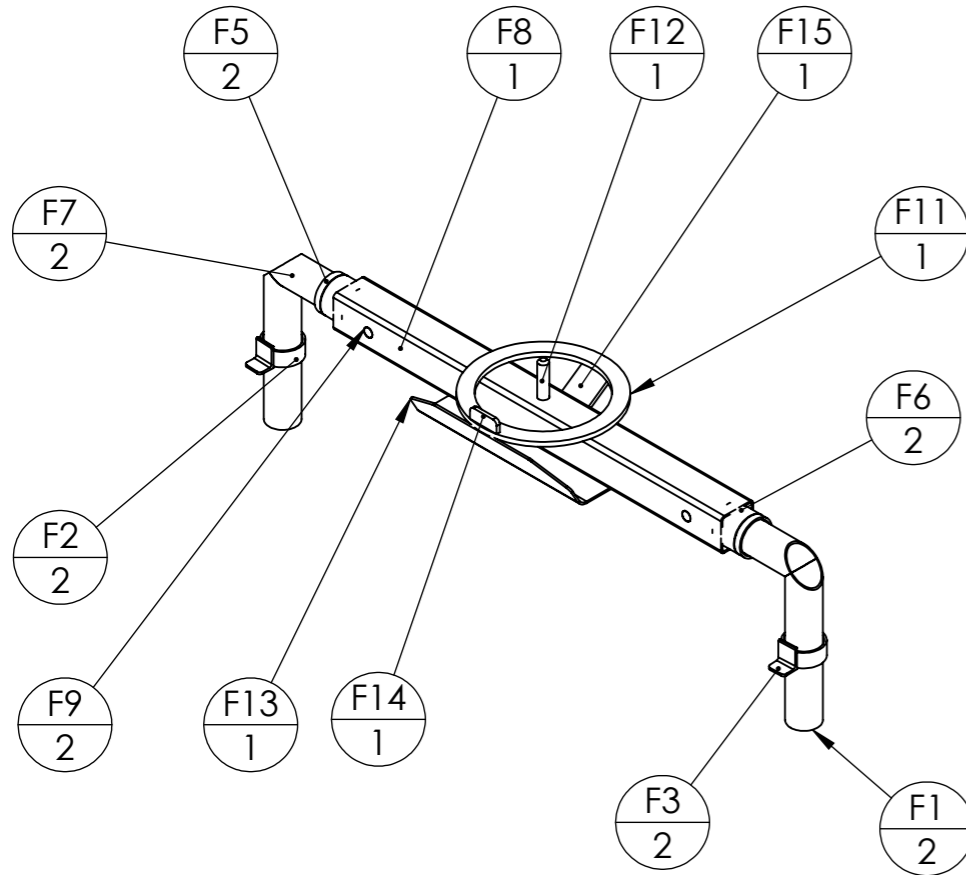


N°	Désignation	Longueur	Qté
B1g	Tube rectangulaire 60 x 30 x 3	3000	1
B1d	Tube rectangulaire 60 x 30 x 3	3000	1

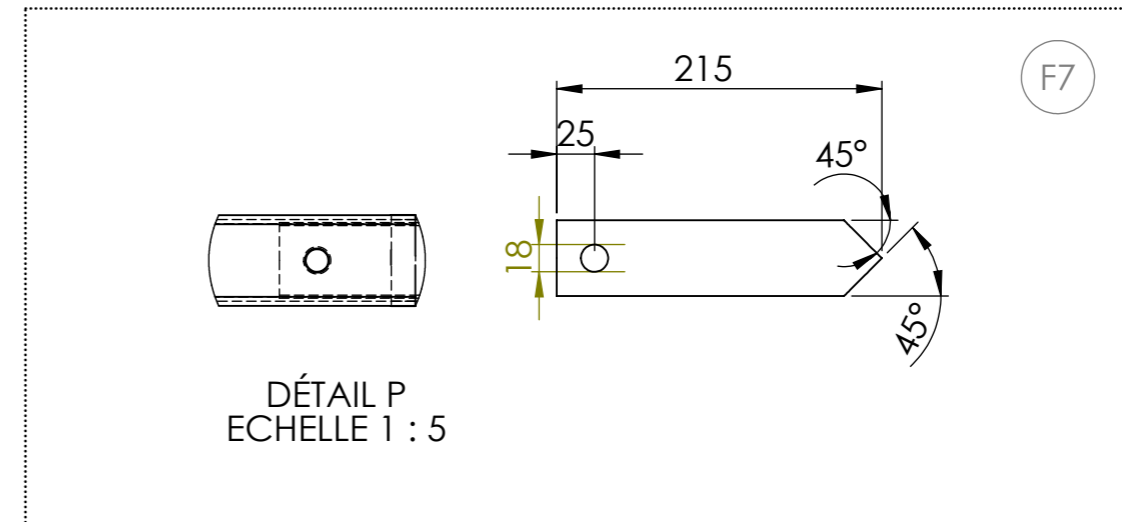
Version	1.0	Qté	1
Date	17/02/2015		
Outil	Porteur		
Pièce	Longeron		



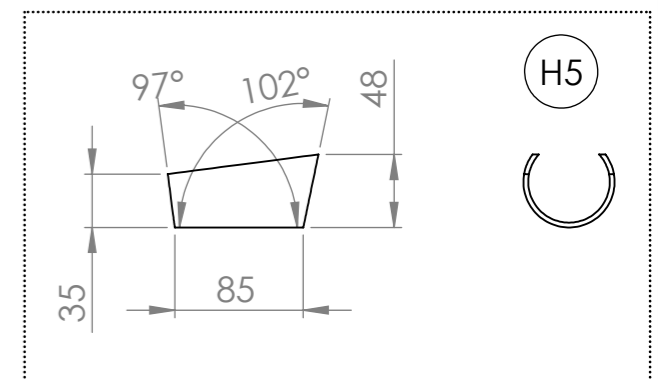
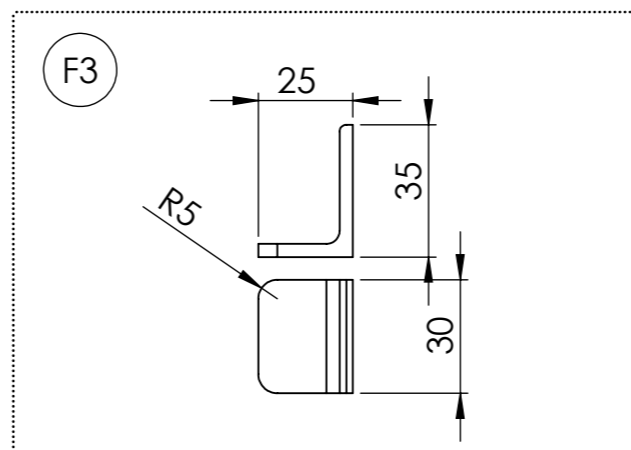
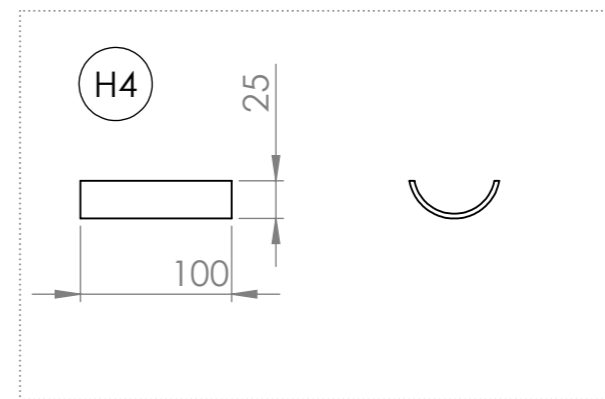
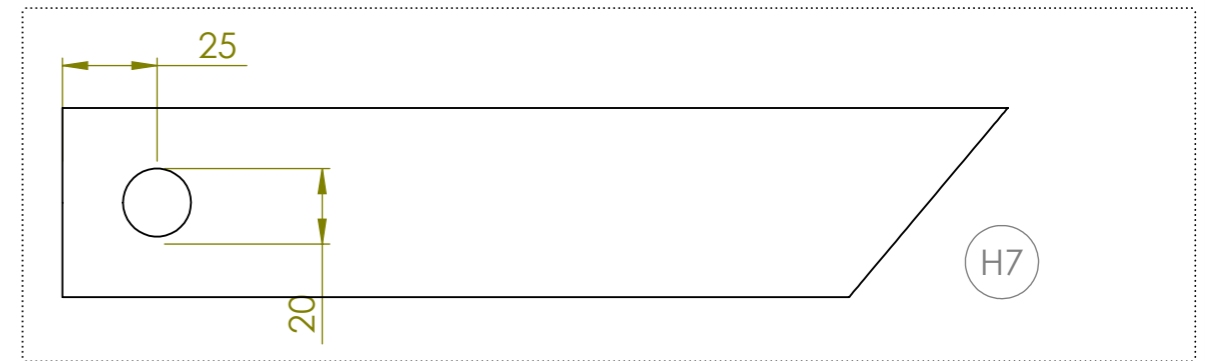
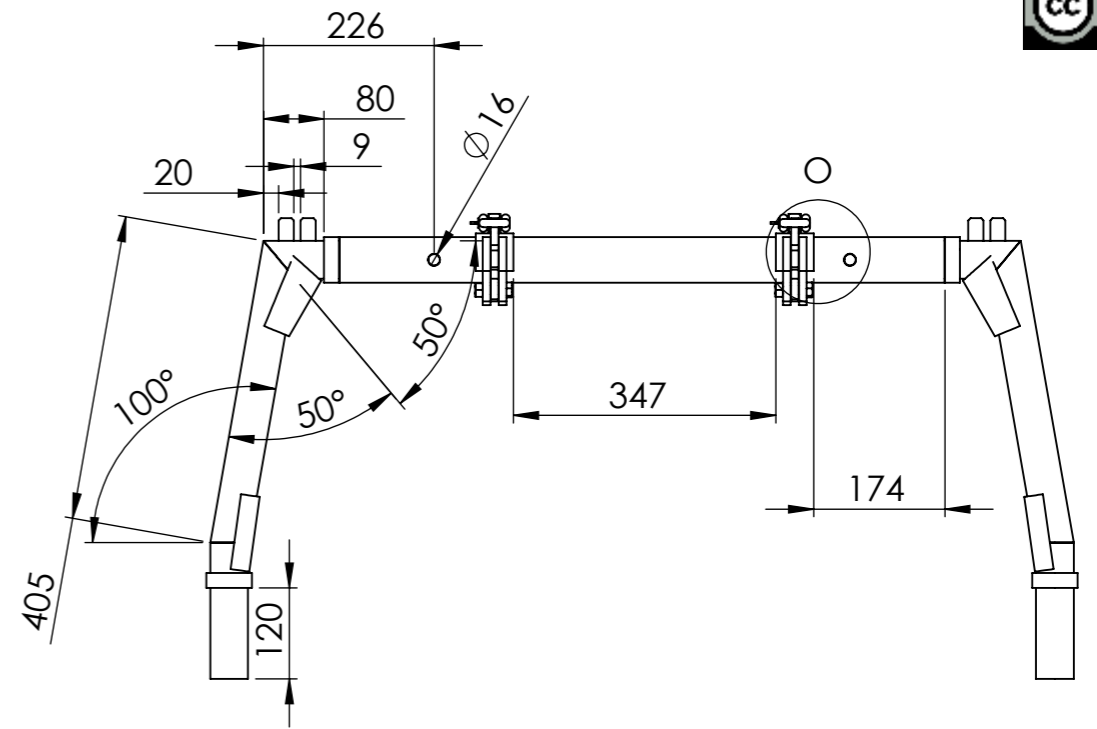
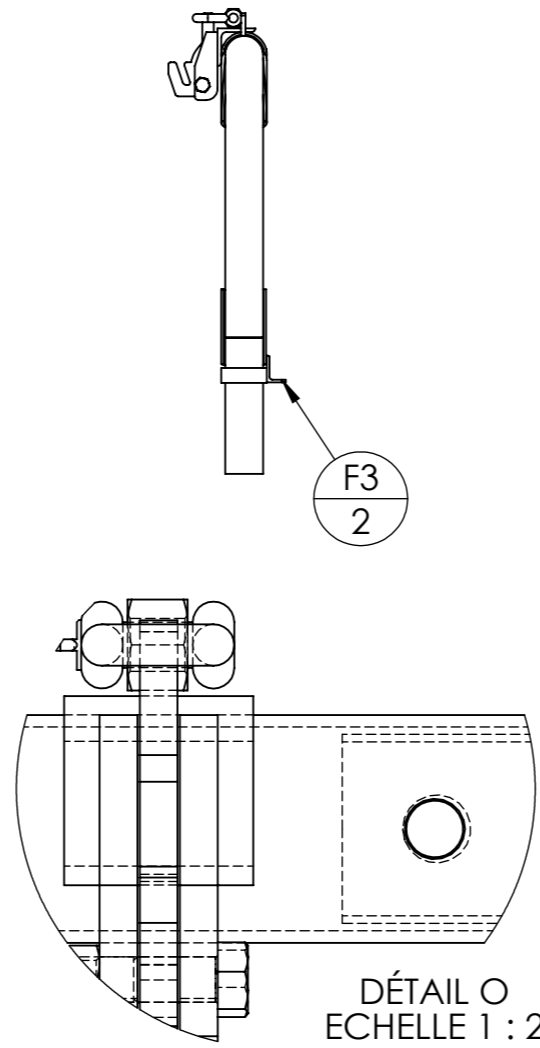
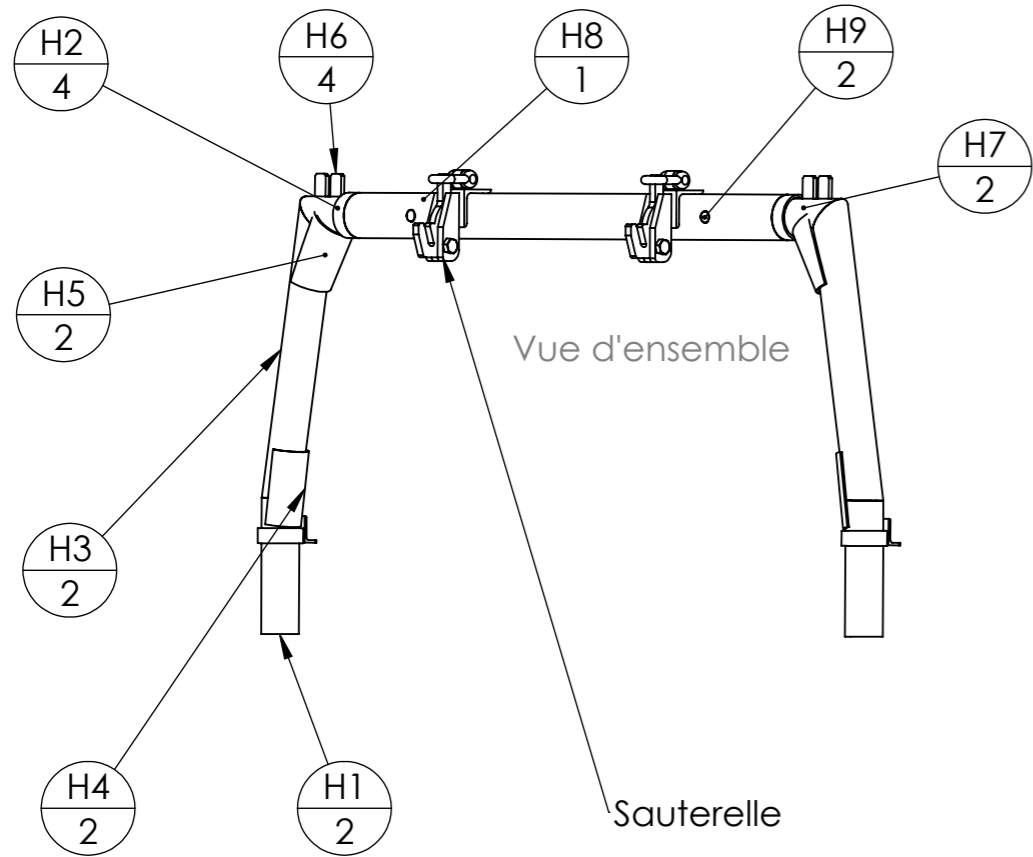
Version	1.0	Qté	1
Date	17/02/2015		
Outil	Porteur		
Pièce	Essieu avant		




N°	Désignation	Longueur	Qté
F1	Tube rond 50 x 2	250	2
F2	Tube rond 60.3 x 3.2	25	2
F3	Cornière 35 x 35 x 3.5	30	2
F5	Tube rond 60.3 x 3.2	10	2
F6	Tube rond 60.3 x 3.2	40	2
F7	Tube rond 50 x 2	215	2
F8	tube carré 60 x 3	725	1
F9	étiré rond Ø15	60	2
F11	Découpe laser		1
F12	Vis hexagonale M16 x 120		1
F13	Tole 3.99	131.6	1
F14	Fer plat 50 x 6	20	1
F15	Fer plat 50 x 6	95	1

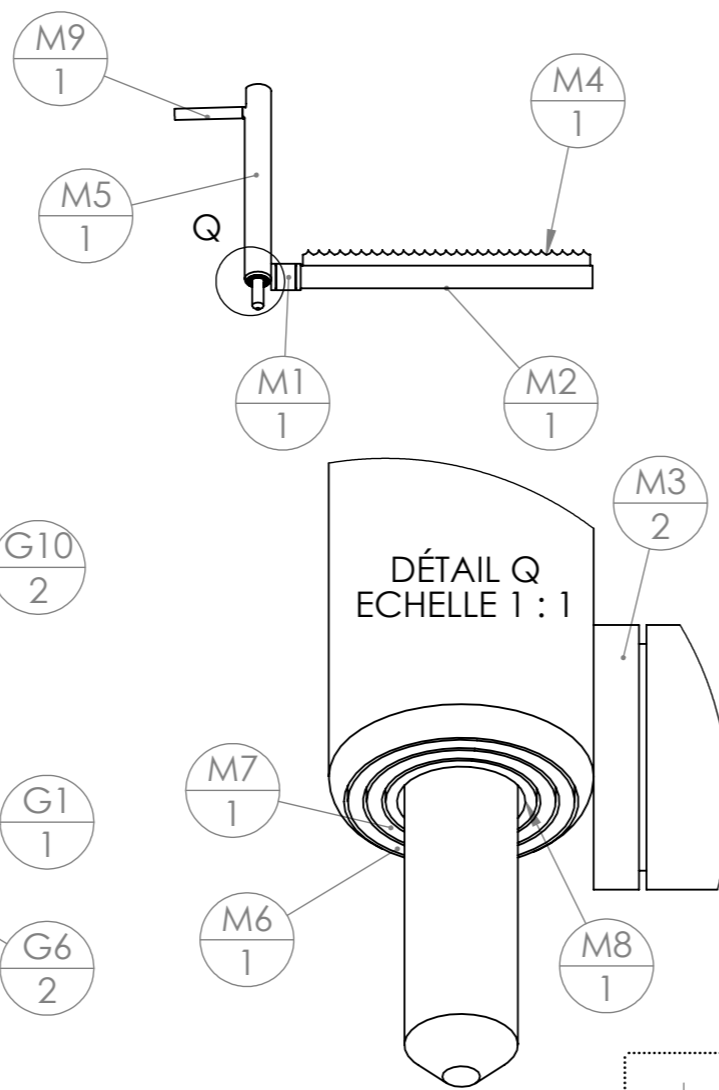


Version	1.0	Qté	1
Date	17/02/2015		
Outil	Porteur		
Pièce	Arche		



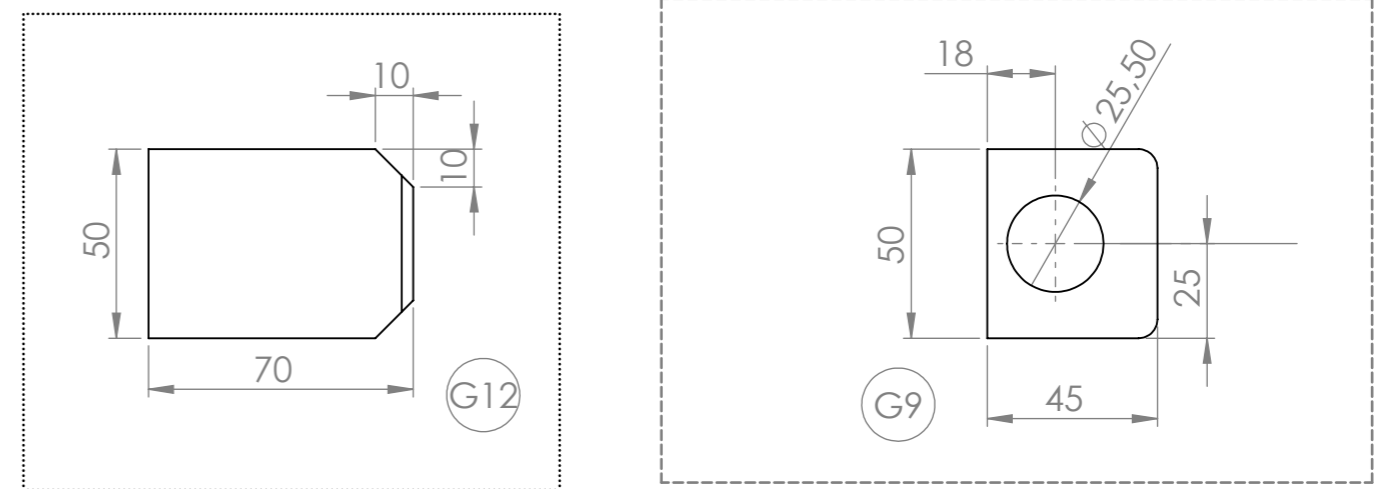
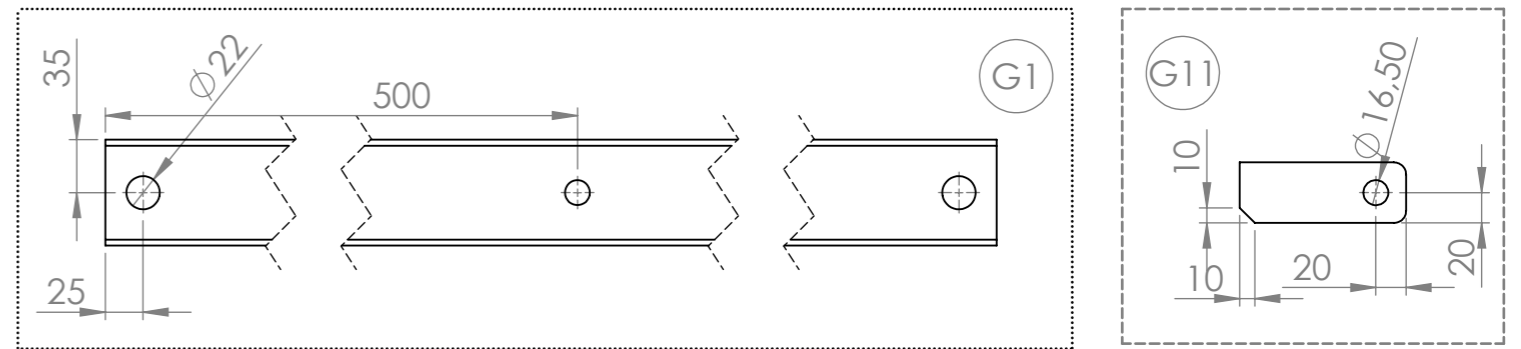
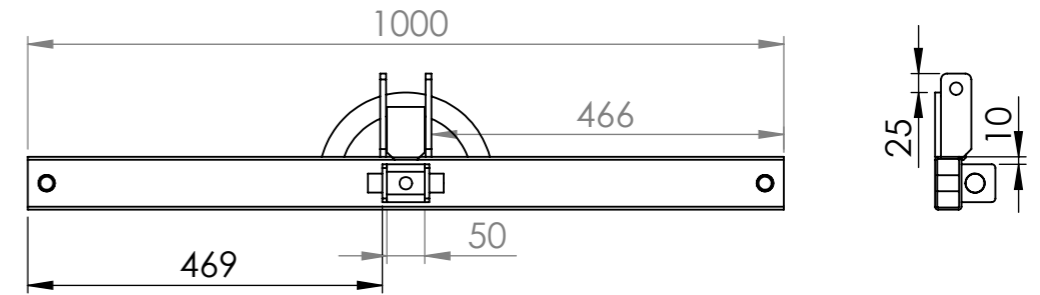
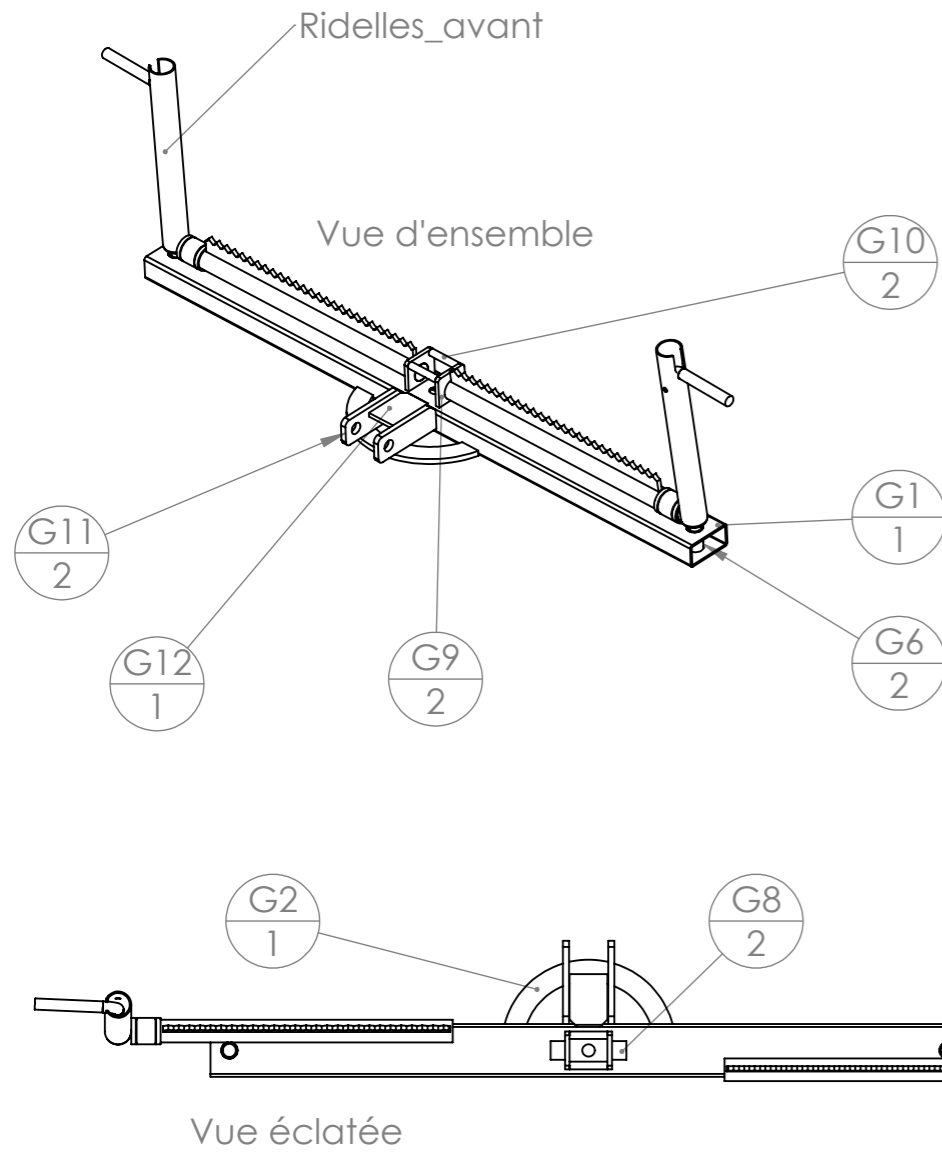
N°	Désignation	Longueur	Qté
H1	Tube rond 50 x 2	180	2
H2	Tube rond 60.3 x 3.2	20	4
H3	Tube rond 50 x 2	405	2
H4	Tube rond 60.3 x 3.2	100	2
H7	Tube rond 50 x 2	250	2
H5	Tube rond 60.3 x 3.2	100	2
H8	Tube rond 60.3 x 3.2	800	1
H6	Fer plat 30 x 6	20	4
H9	étiré rond Ø15	60	2
F3	Cornière 35 x 35 x 3.5	30	2

Version	1.0	Qté	1	
Date	17/02/2015			
Outil	Porteur			
Pièce	Tourelle et ridelles			



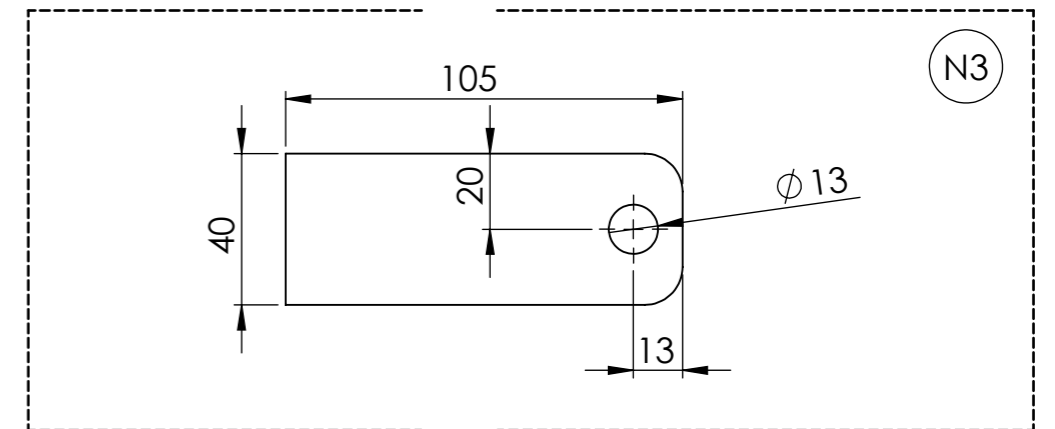
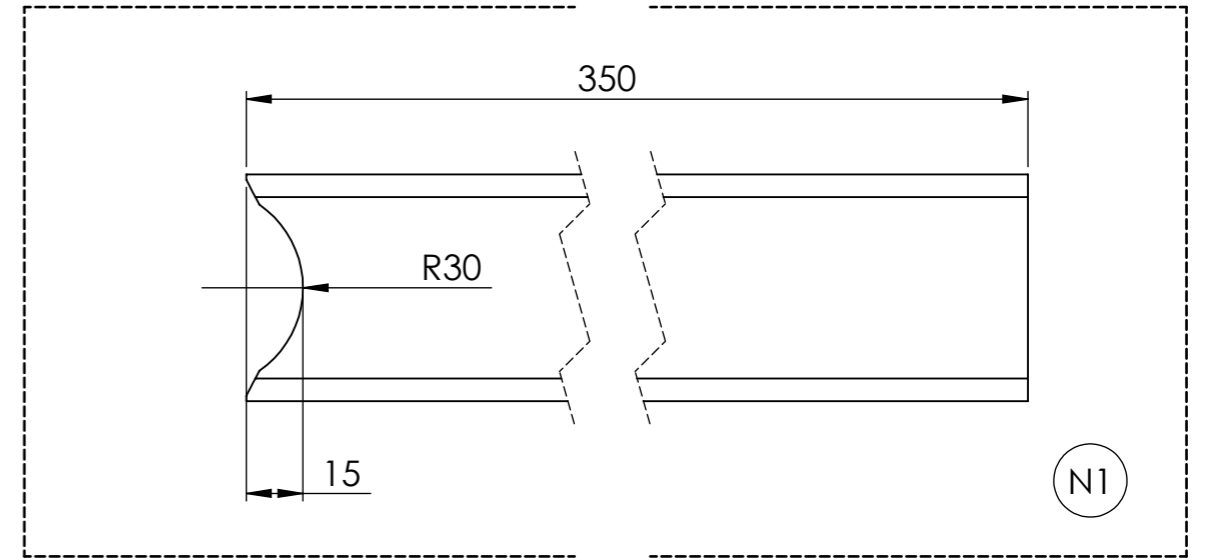
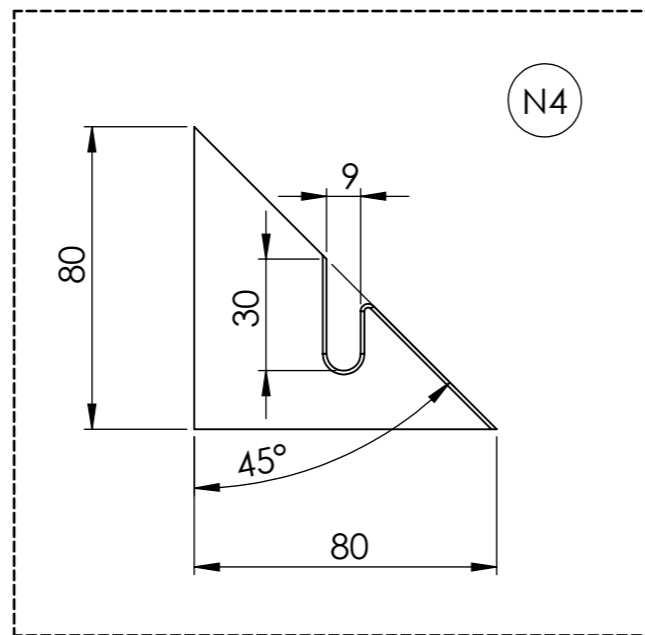
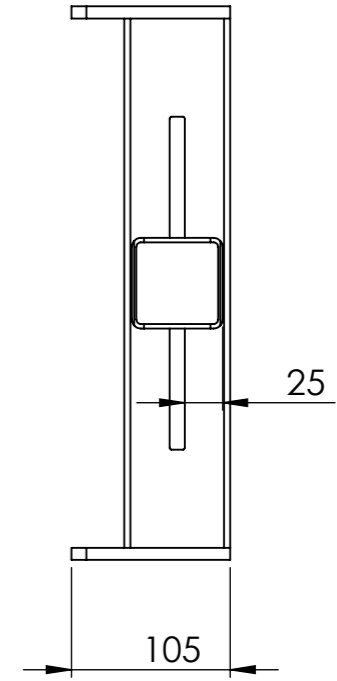
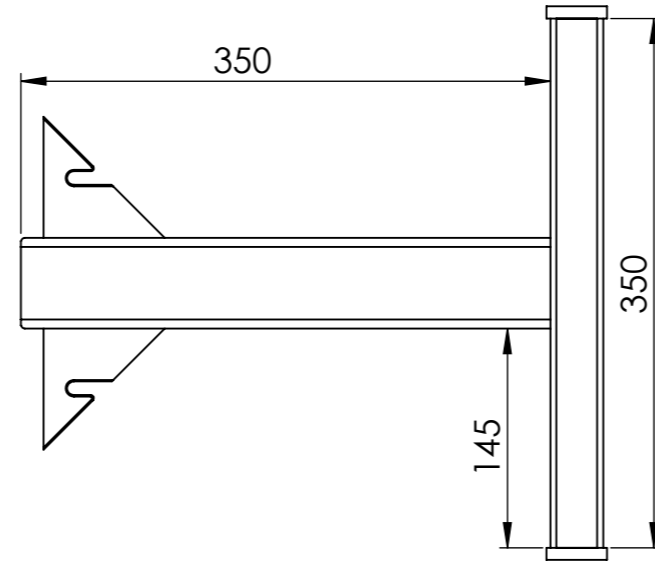
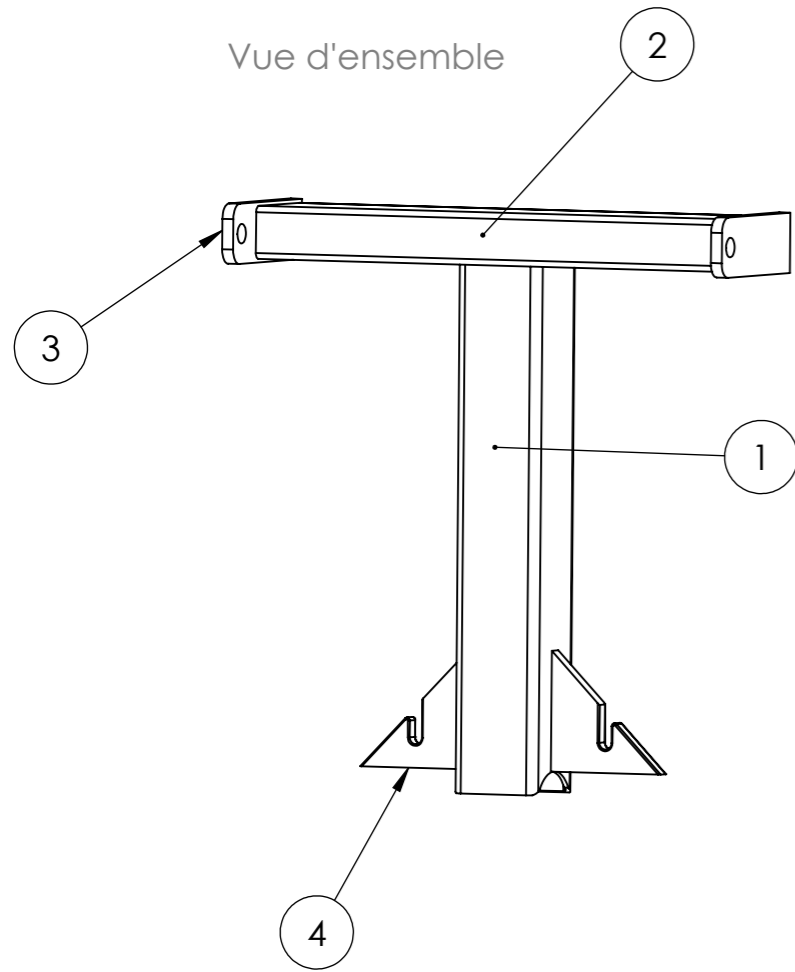
N°	Désignation	Longueur	Qté
M1	Tube rond 35 x 2	25	1
M2	Tube rond 30 x 2	425	1
M3	Tube rond 35 x 2	6	2
M4	Découpe laser		1
M5	Tube rond 35 x 2	300	1
M6	Tube rond 30 x 2	50	1
M7	Tube rond 25 x 2	50	1
M8	tube rond 20 x 1.5	50	1
M9	étiré rond Ø15	310	1

Les pièces M6, M7 et M8 sont soudée par bout entre elles, puis emmenchées et assemblées à M5 par une "soudure bouchon".




N°	Désignation	Longueur	tourelle et ridelles/Quantité
G2	Découpe laser		1
G6	Tube rond 21.3 x 2	35	2
G1	Tube rectangulaire 35 x 70 x 3	1000	1
G9	Fer plat 50 x 6	45	2
G8	étiré rond Ø25	25	2
G10	Etiré rond Ø10	50	2
G11	Fer plat 40 x 8	110	2
G12	Fer plat 50 x 6	70	1
Ridelles_avant	Ridelle avant (M)		2

Version	1.0	Qté	1
Date	17/02/2015		
Outil	Porteur		
Pièce	Potence		

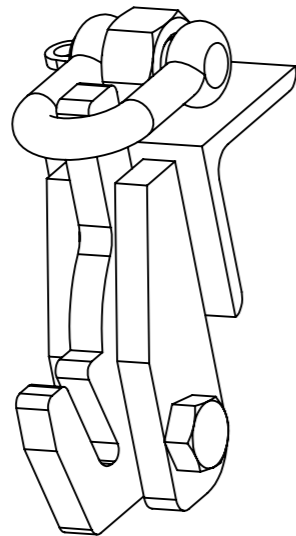


N°	Désignation	Longueur	Qté
N1	tube carré 60 x 3	350	1
N2	Tube rectangulaire 35 x 70 x 3	350	1
N3	Fer plat 40 x 8	105	2
N4	Fer plat 80 x 10	80	2

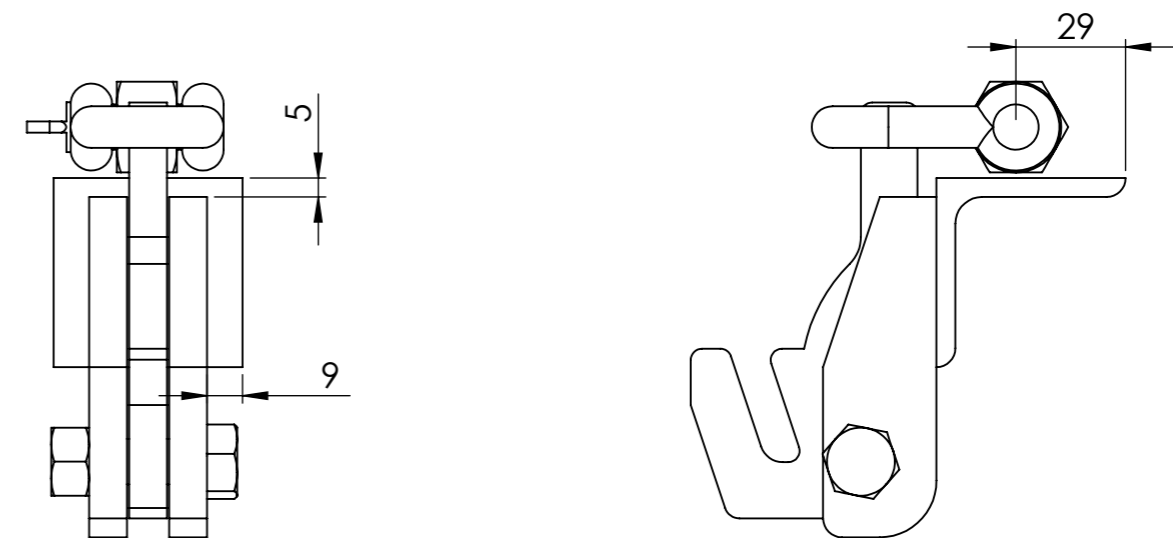
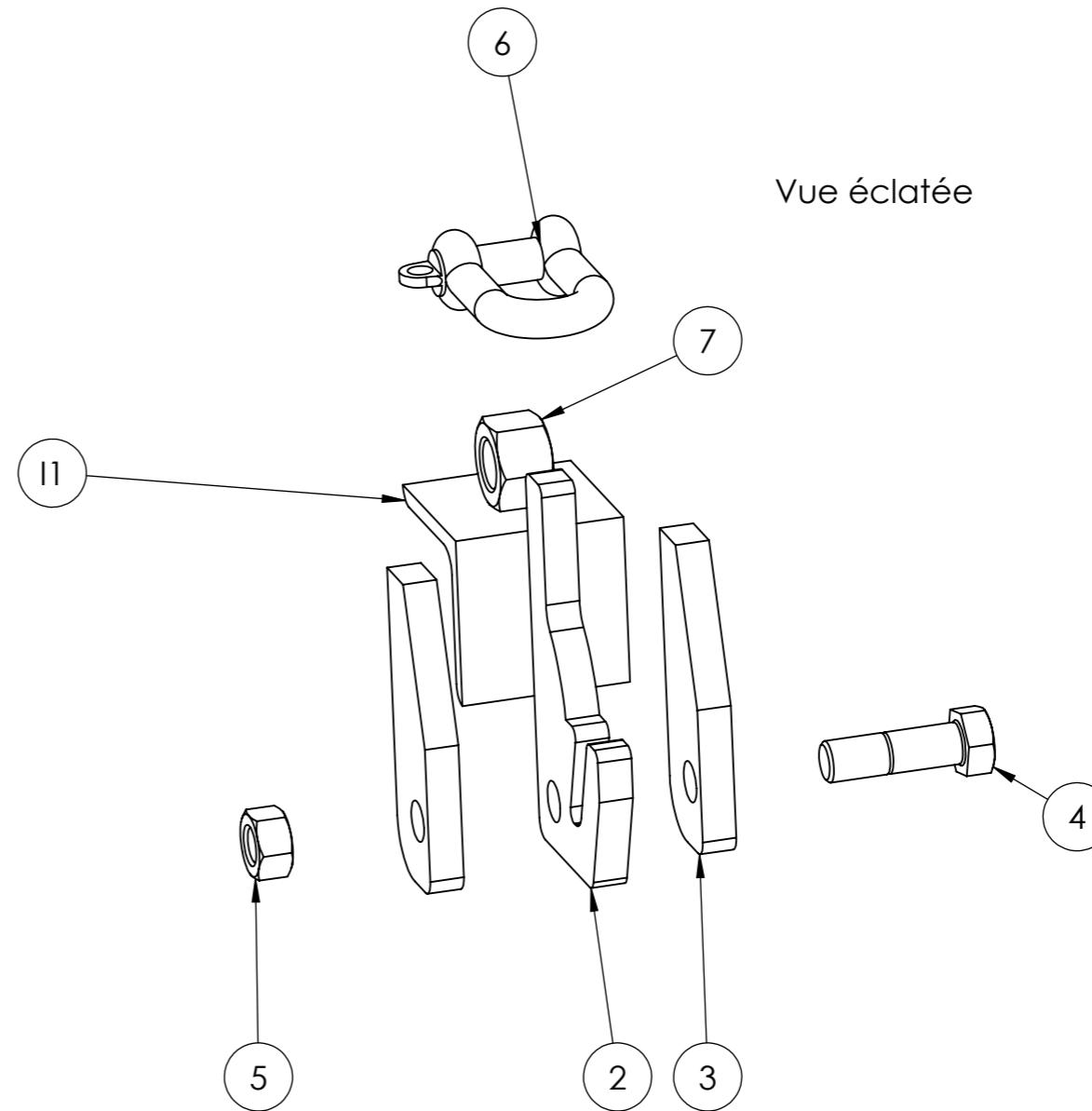
Version	1.0	Qté	1	
Date	17/02/2015			
Outil	Porteur			
Pièce	Mécanisme Sauterelle			




Vue d'ensemble

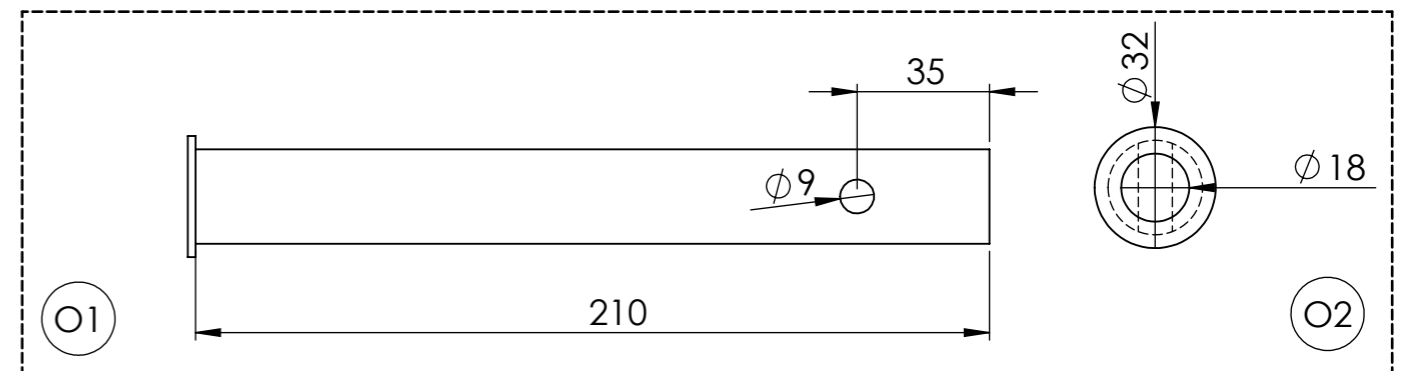
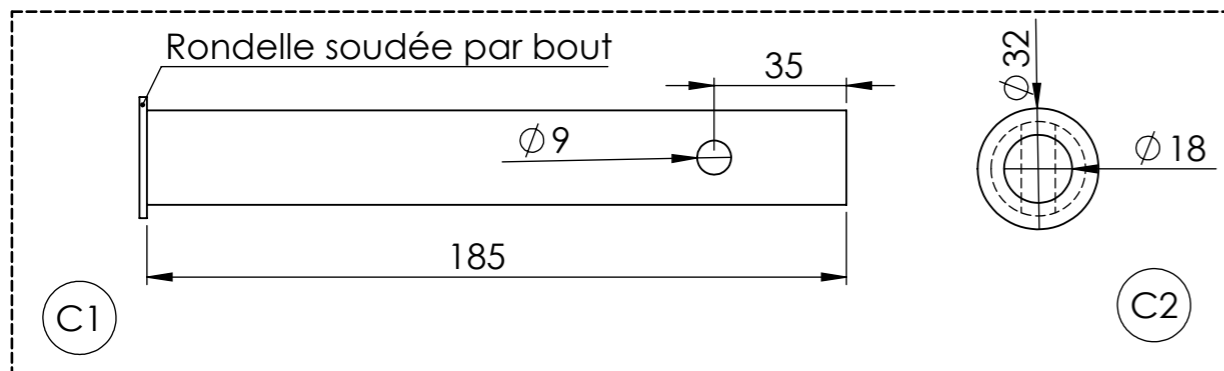
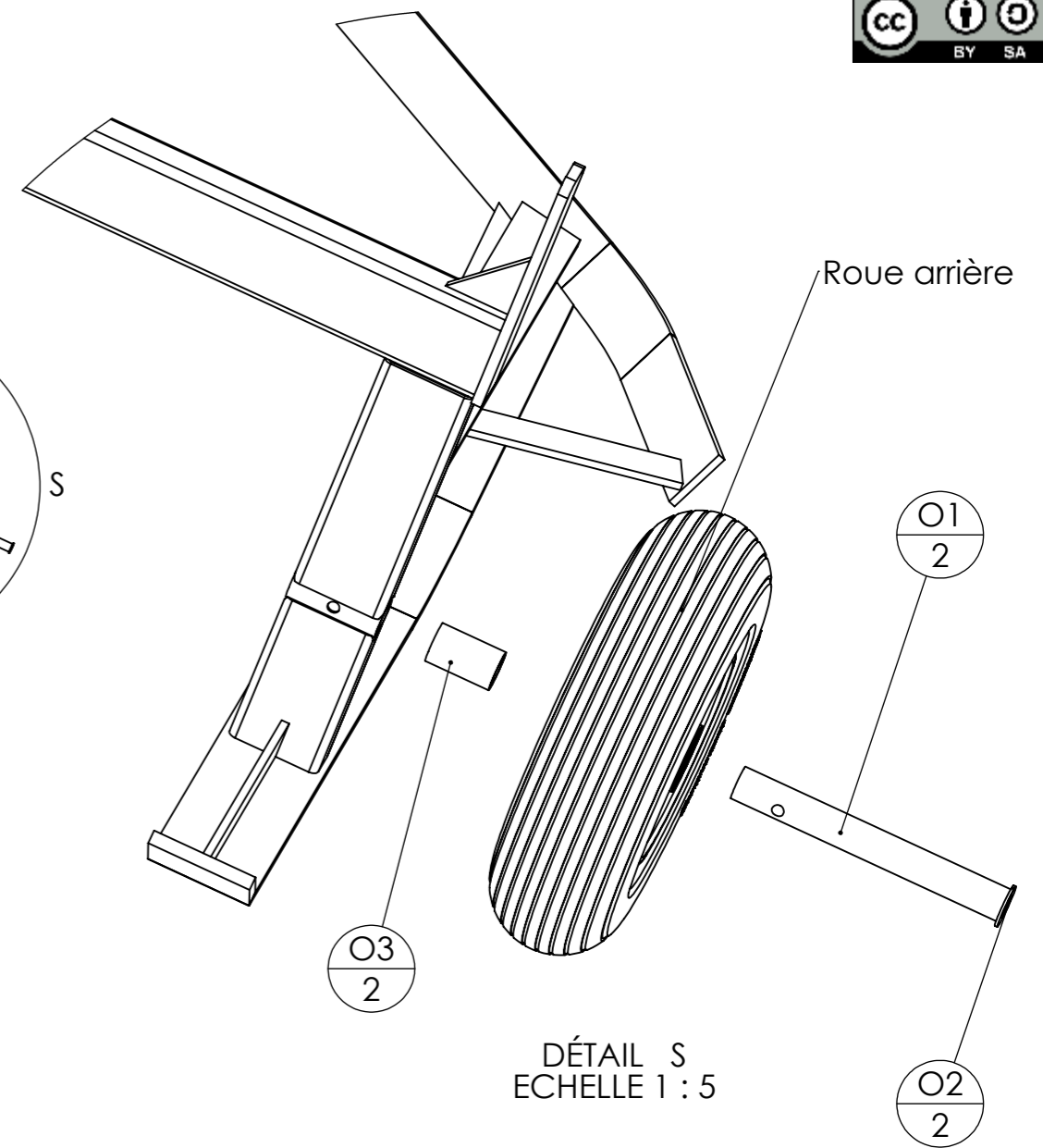
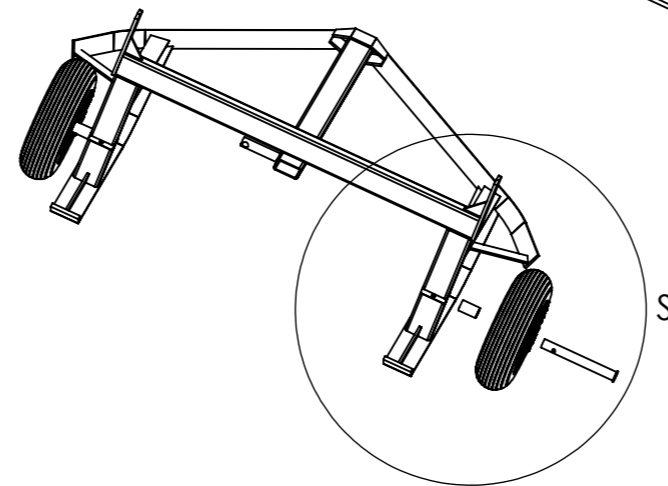
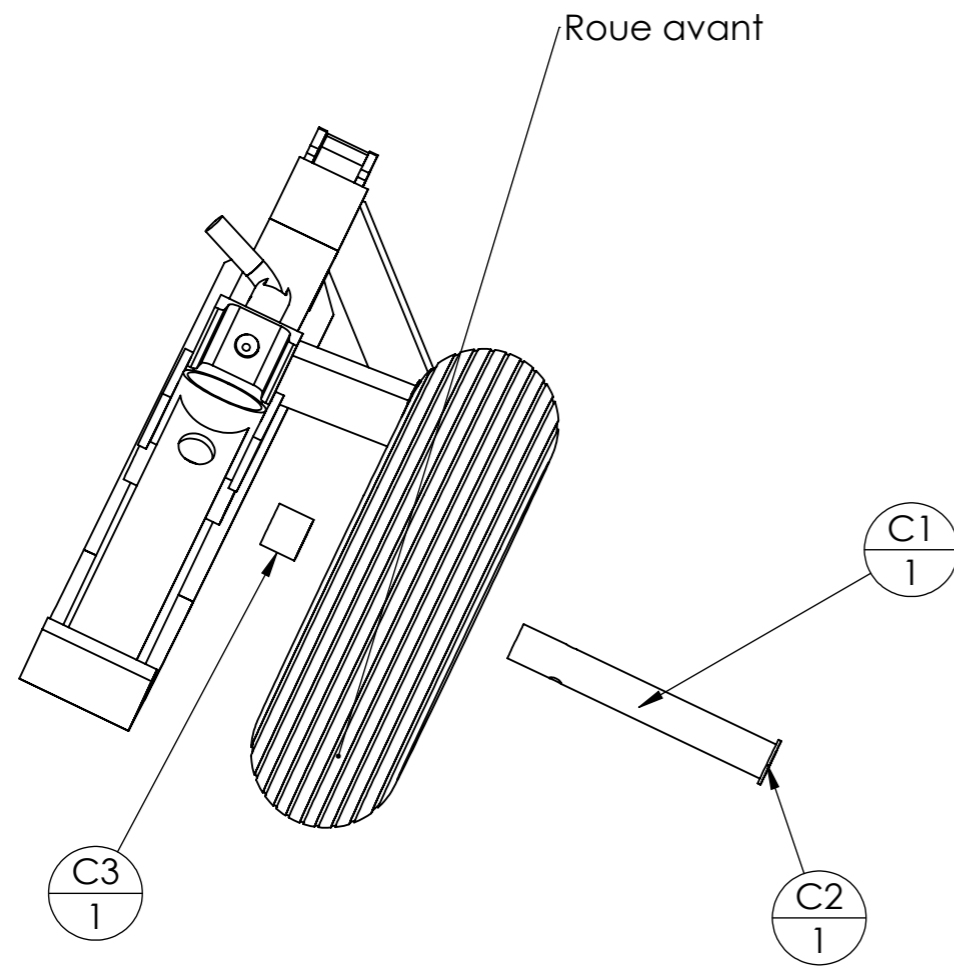


Vue éclatée




N°	Désignation	Longueur	Qté
11	Cornière 35 x 35 x 3	55	1
2	Largueur Sauterelle		1
3	Dormants sauterelle		2
4	Vis M12 L40 Brut		1
5	Ecrou M12 Nylstop		1
6	Manille		1
7	Ecrou M16 Brut		1

Version	1.0	Qté	1	
Date	17/02/2015			
Outil	Porteur			
Pièce	Montage roues			



N°	Désignation	Longueur	Qté
Roue avant			2
C1	étiré rond Ø25	185	2
C2	Rondelle D18		2
C3	Tube rond 30 x 2	25	2
A15	étiré rond Ø15	140	1

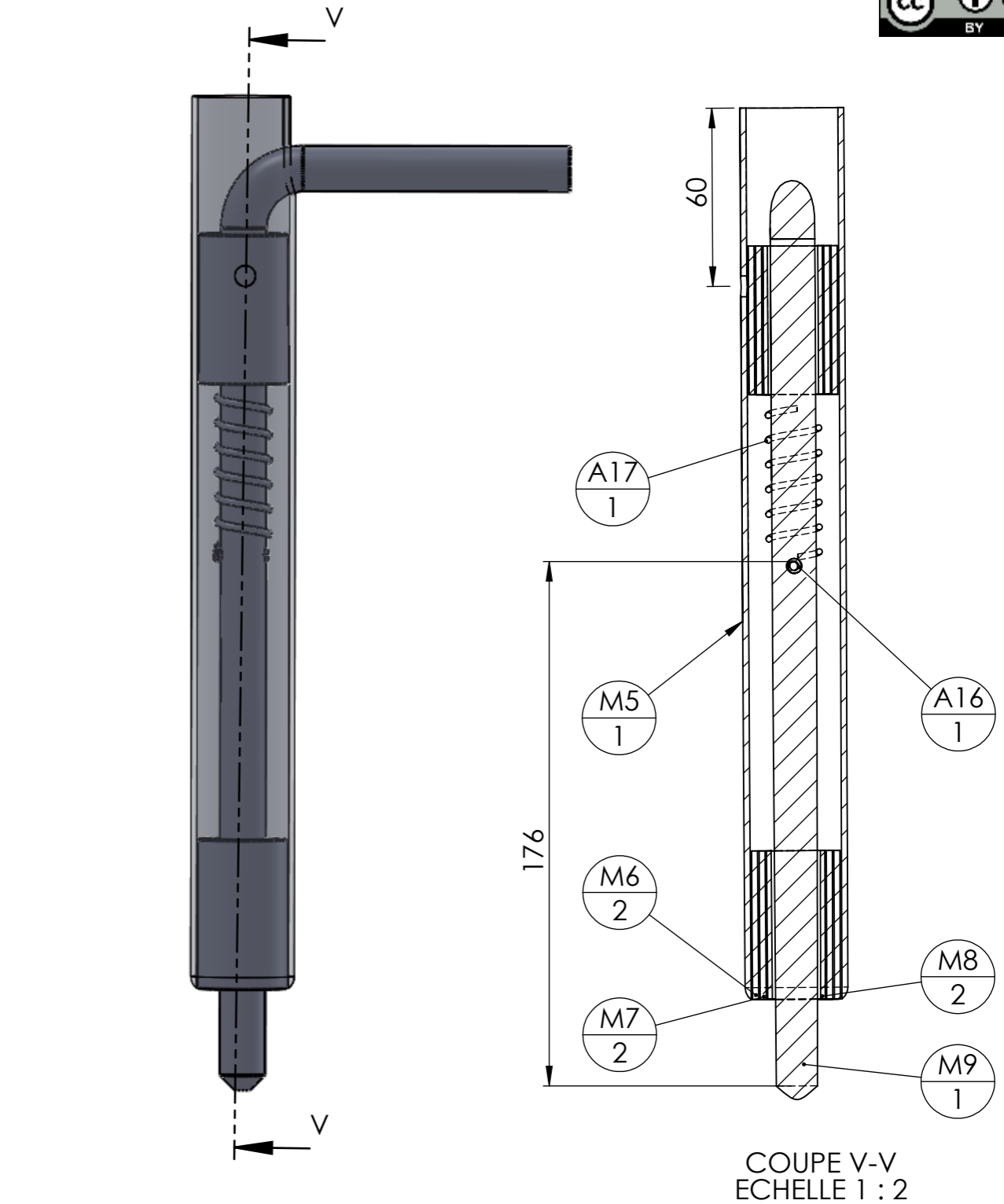
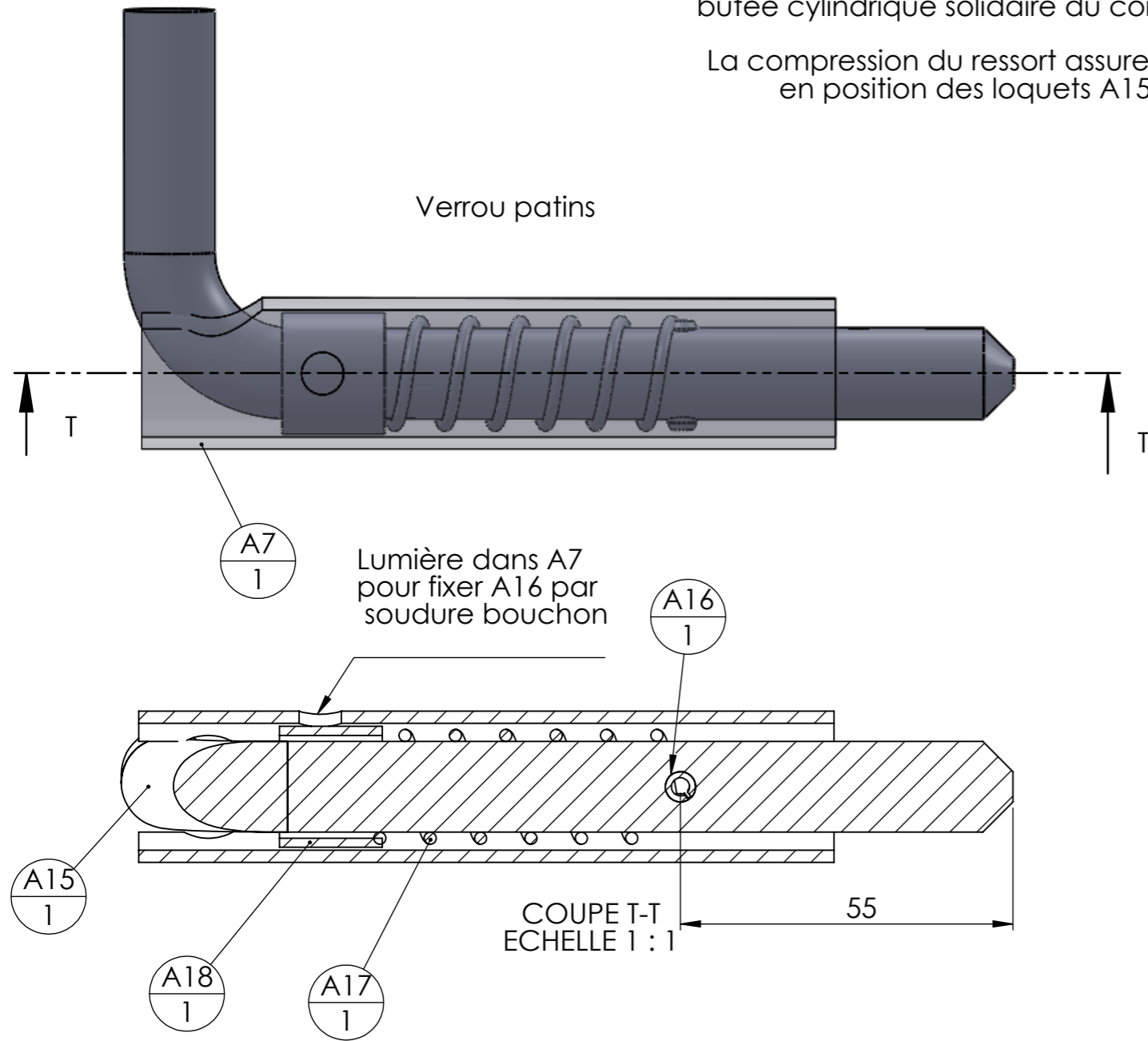
N°	Désignation	Longueur	Qté
Roue arrière			2
O1	étiré rond Ø25	210	2
O2	Rondelle D18		2
O3	Tube rond 30 x 2	50	2

Version	1.0	Qté	1	
Date	17/02/2015			
Outil	Porteur			
Pièce	Verrous à ressort			



Dans les deux cas le ressort est pris en sandwich entre la goupille élastique et une butée cylindrique solidaire du corps principal.

La compression du ressort assure le maintien en position des loquets A15 et M9



N°	Désignation	Longueur	Qté
A7	Tube rond 25 x 2	115	1
A15	étiré rond Ø15	140	1
A16	goupille élastique d5	20	1
A17	Ressort		1
A18	tube rond 20 x 1.5	17	1

N°	Désignation	Longueur	Qté
M5	Tube rond 35 x 2	300	1
M6	Tube rond 30 x 2	50	2
M7	Tube rond 25 x 2	50	2
M8	tube rond 20 x 1.5	50	2
M9	étiré rond Ø15	310	1
A17	Ressort		1
A16	goupille élastique d5	20	1