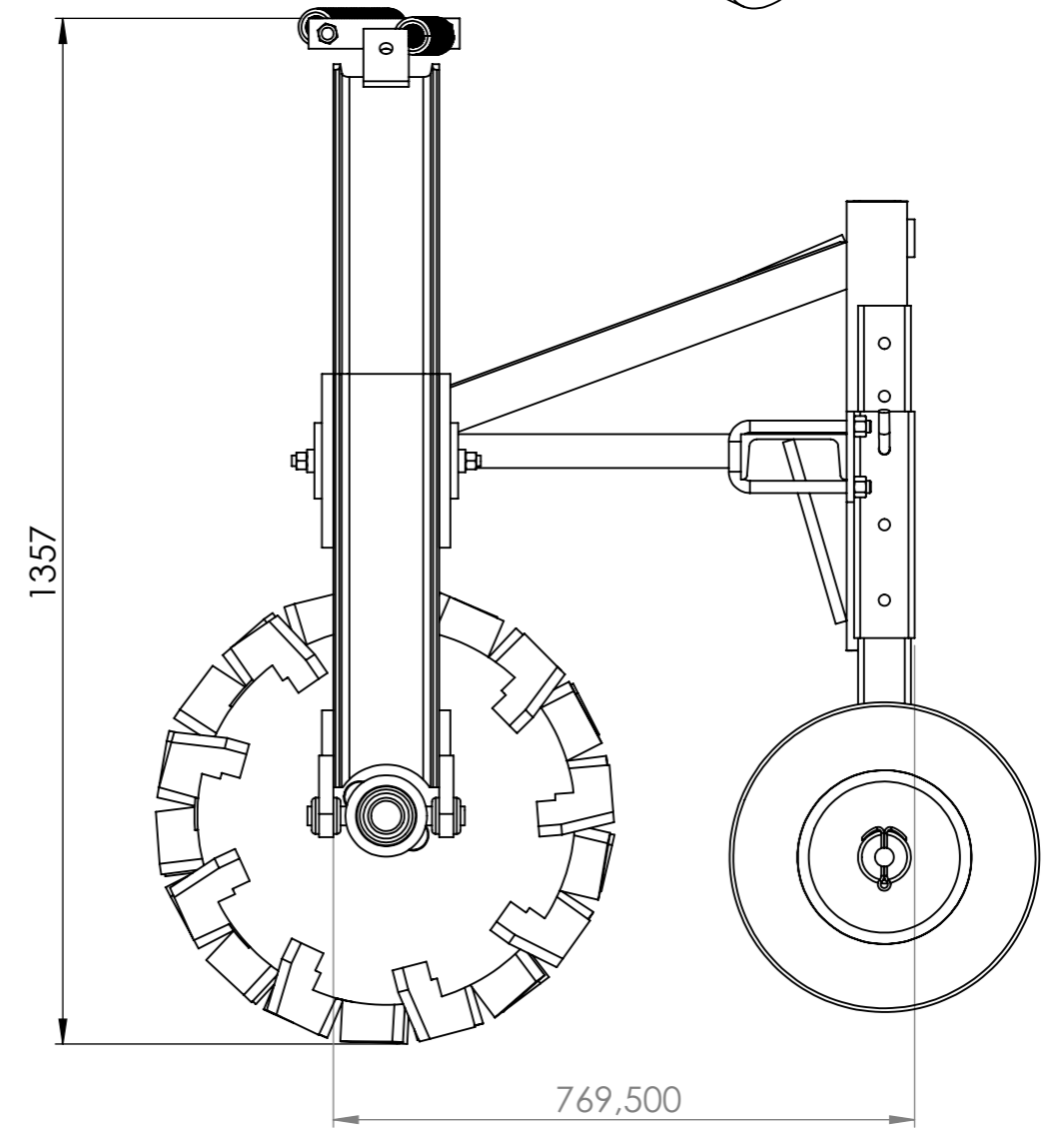
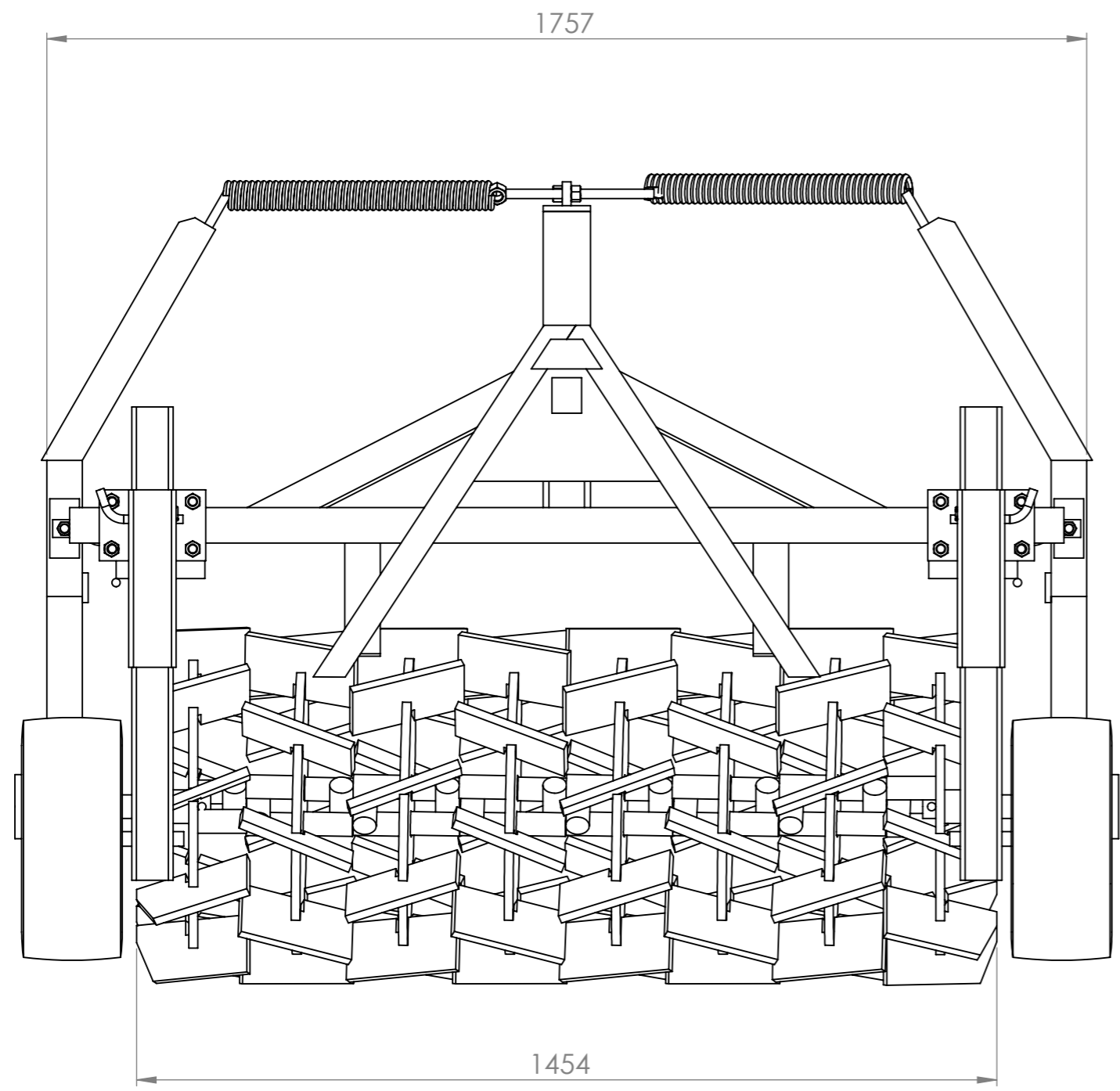
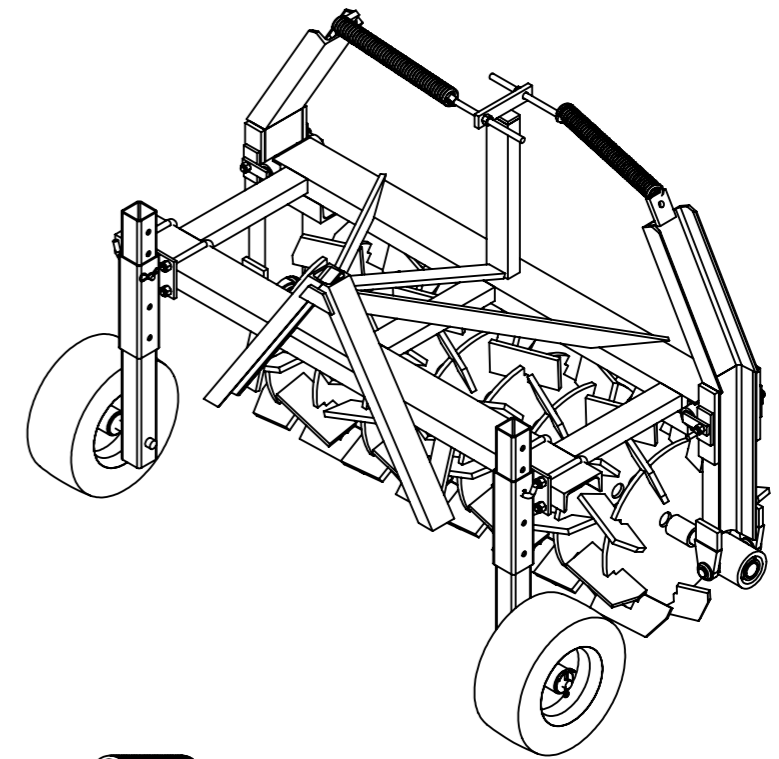
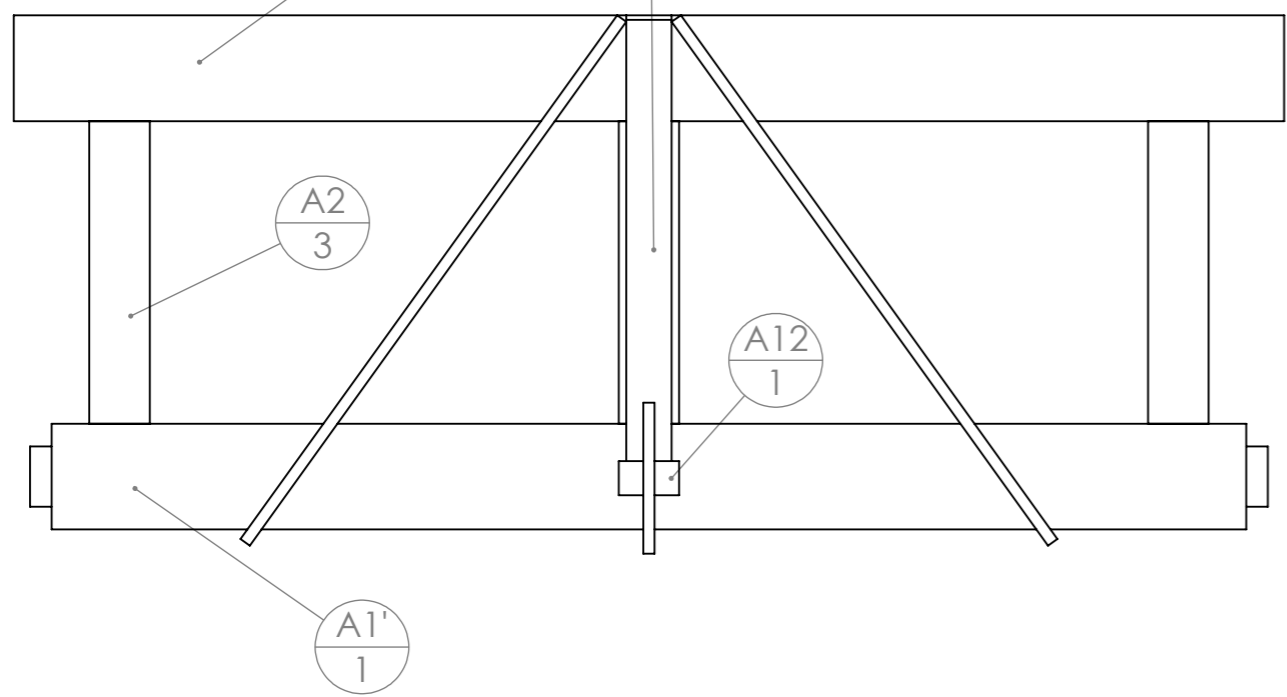
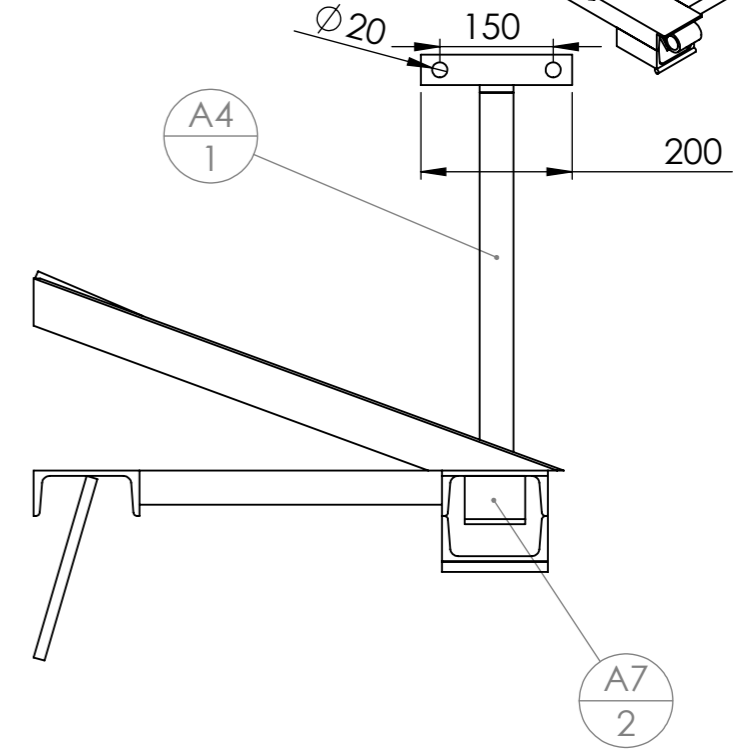
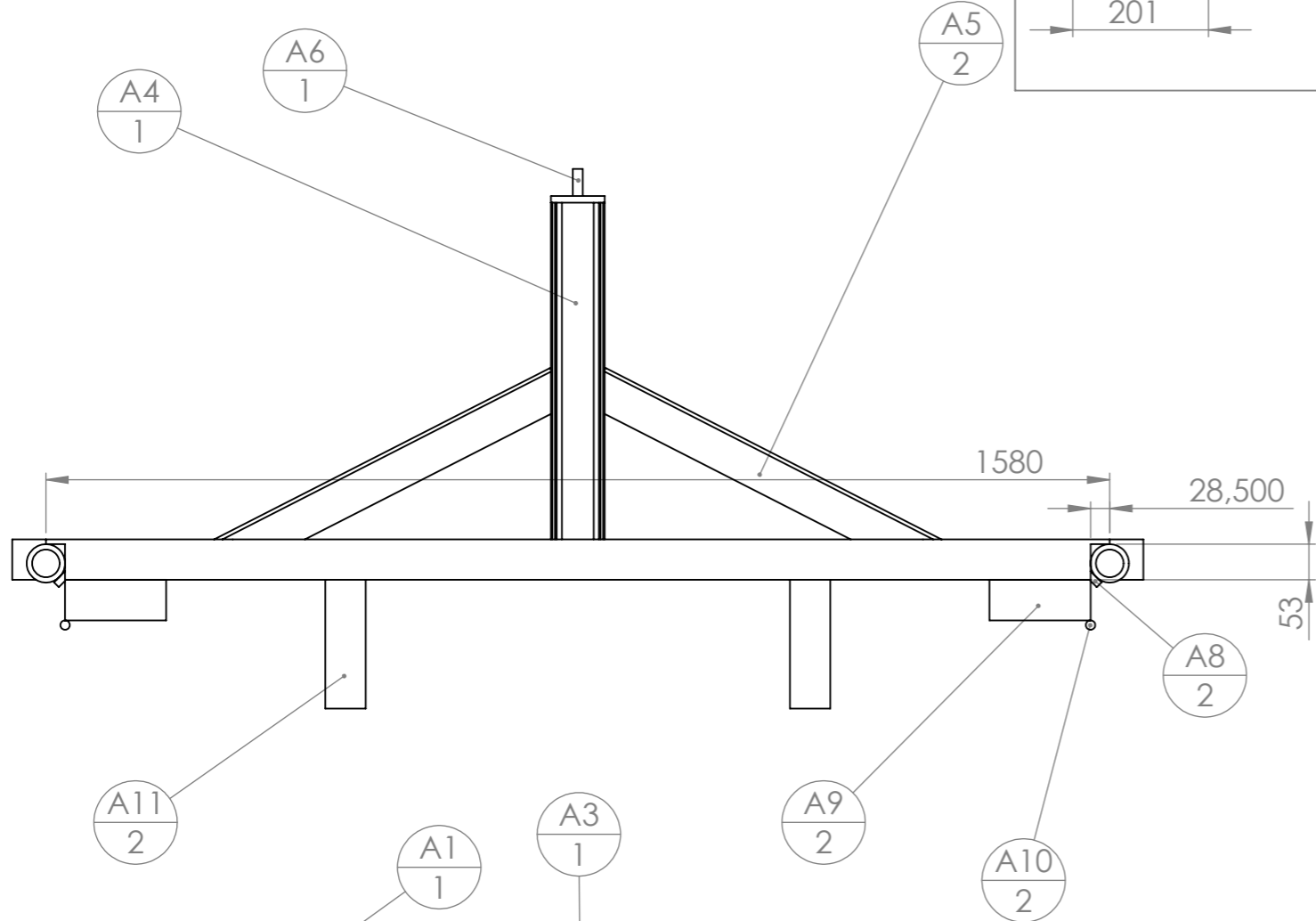
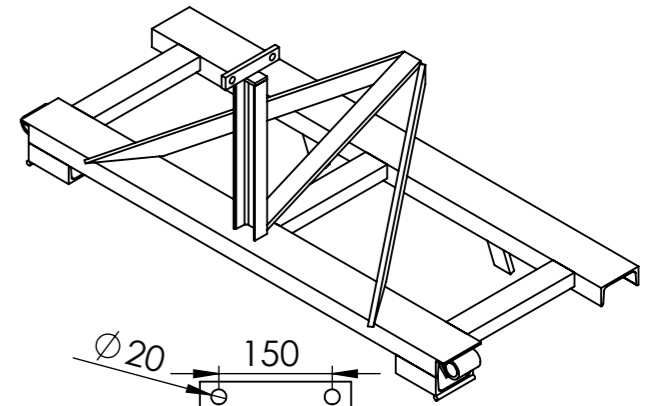
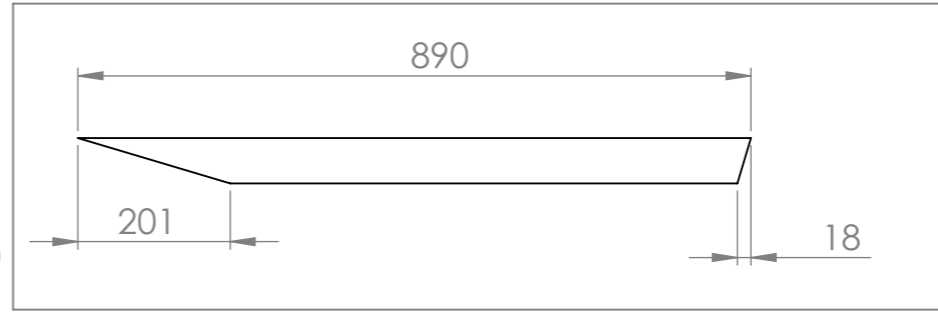
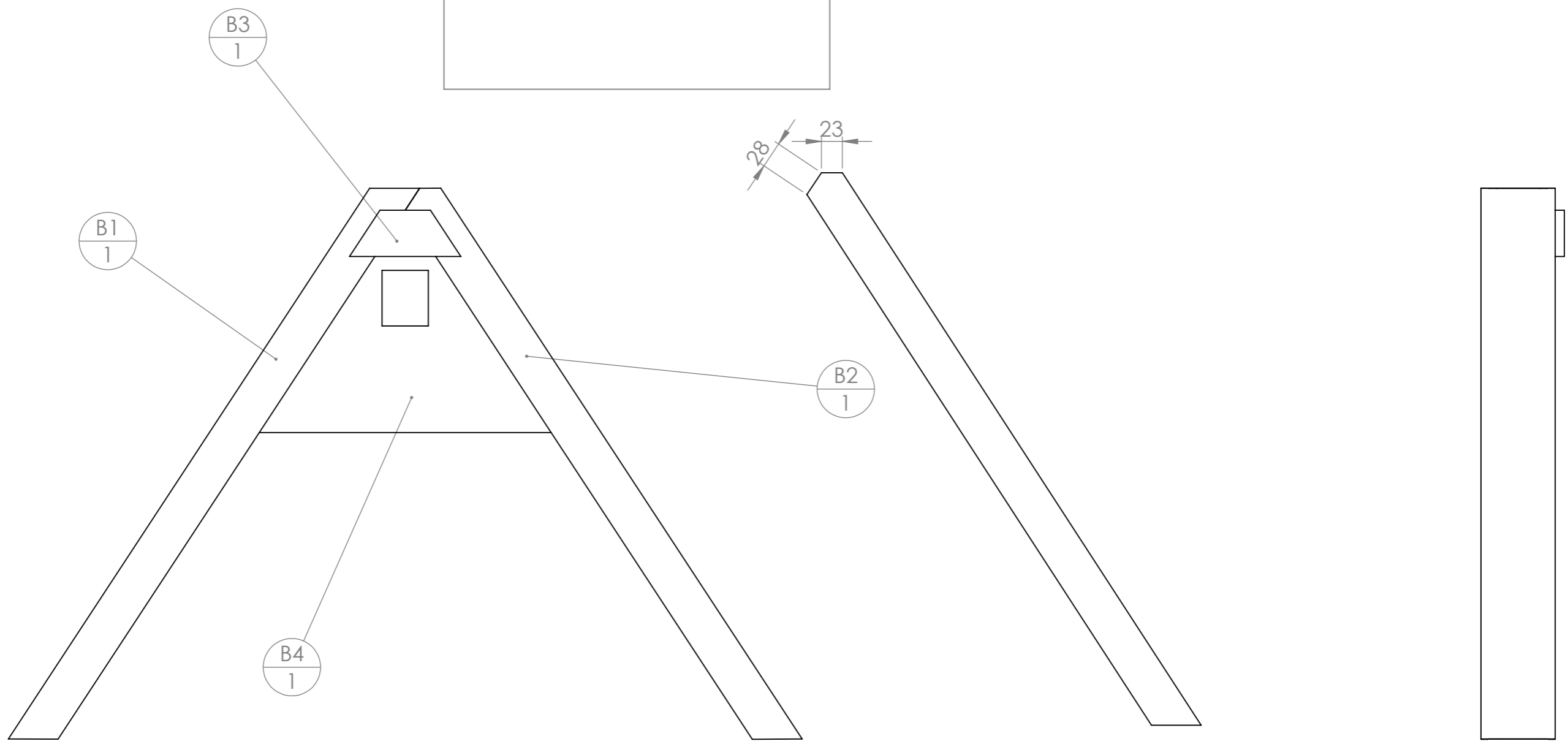
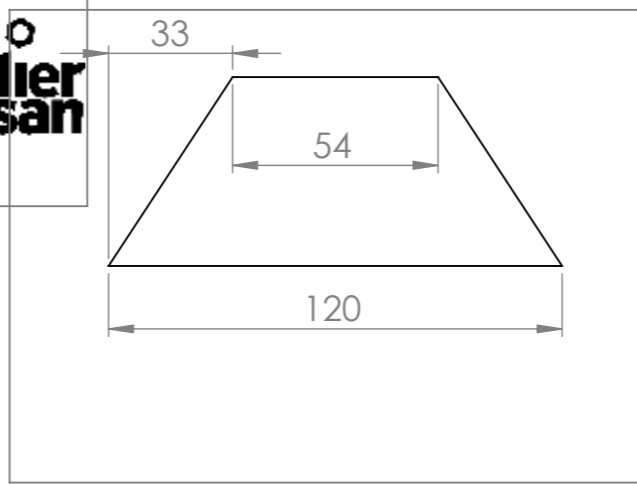


Outil	Roloflex				
Date	10/10/2019	Version	1.1		page n° 1 / 8
Feuille	Vue générale				



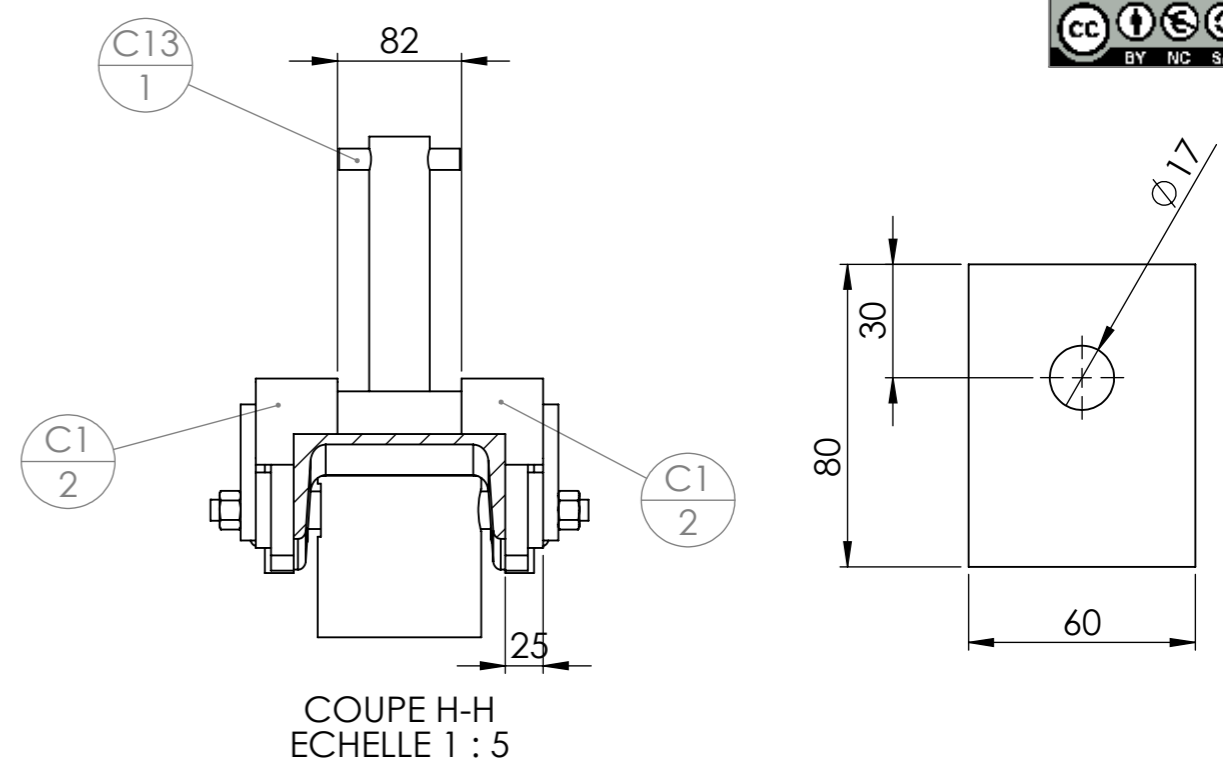
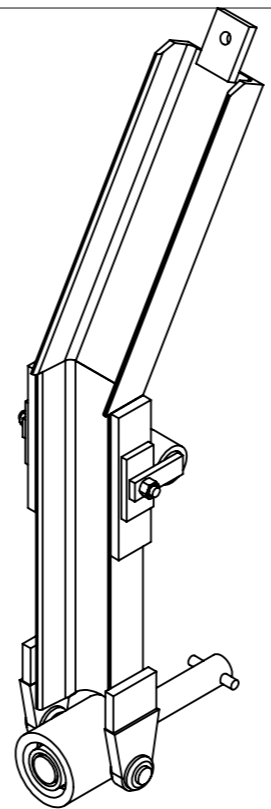
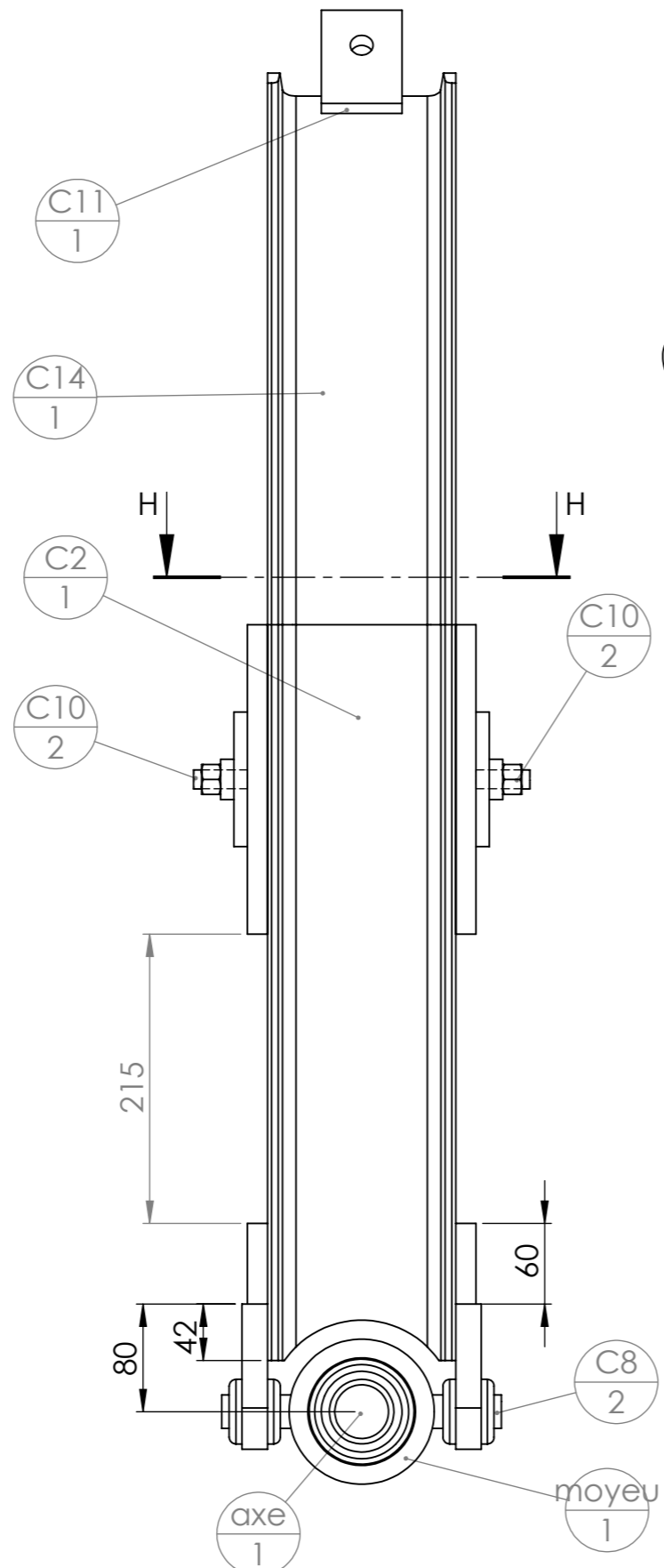
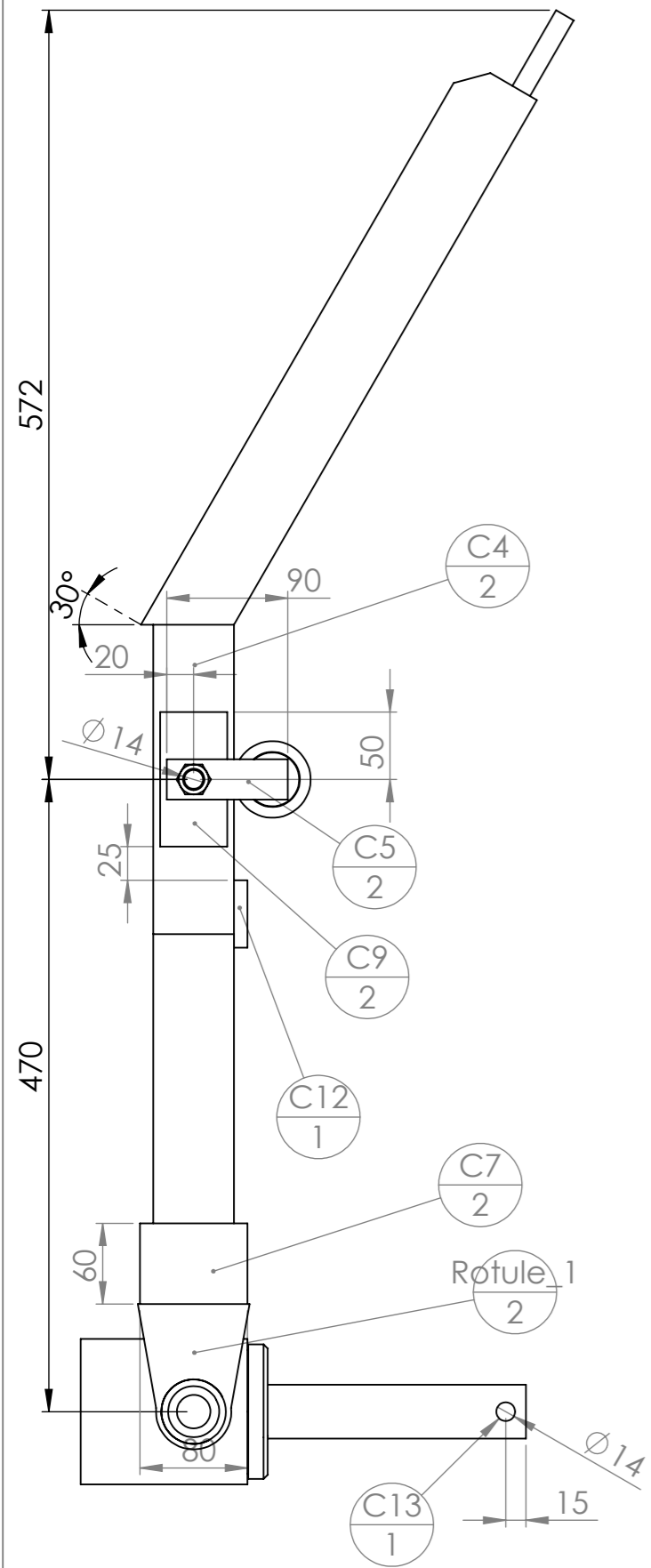


N°	Désignation	Longueur	Qté
A1	UPN 140 x 60	1680	1
A1'	UPN 140 x 60	1580	1
A2	UPN 80 x 45	400	3
A3	Fer plat 60 x 15	635	1
A4	UPN 80 x 45	500	1
A5	Fer plat 60 x 15	890	2
A6	fer plat 60 x 15	200	1
A7	ébauche tubulaire Øint 41 Øext 60	80	2
A8	fer plat 80 x 10	80	2
A9	UPN 140 x 60	150	2
A10	étiré rond Ø14	140	2
A11	Fer plat 60 x 15	250	2
A12	Fer plat 80 x 15	45	1

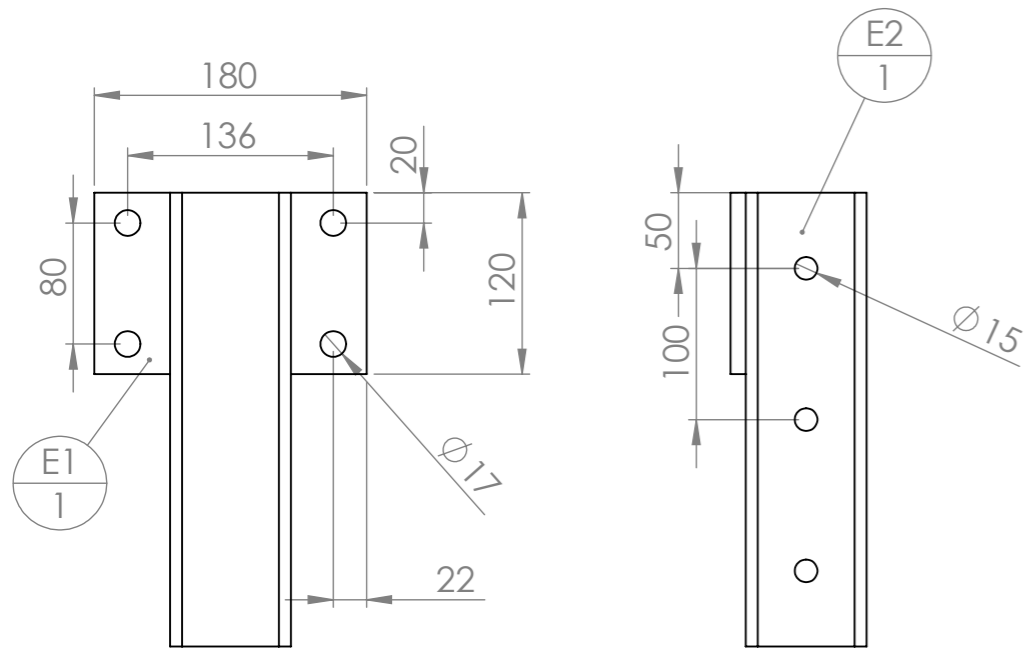


N°	Désignation	Longueur	Qté
B3	Fer plat 50 x 10	120	1
B1	UPN 80 x 45	740	1
B2	UPN 80 x 45	740	1
B4	Tôle triangle intérieure		1

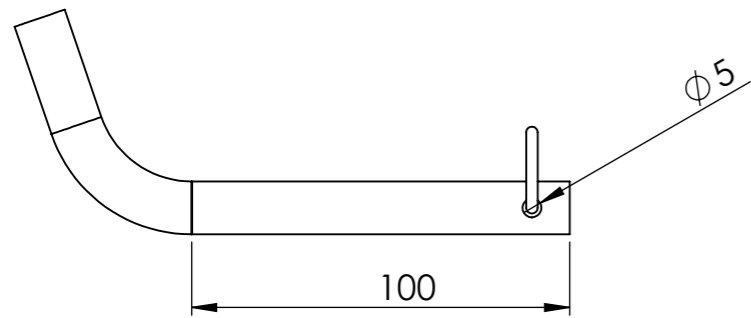
**C5 et C9 sont à percer en Ø14
 C10 est une vis qu'il faut guillotiner
 puis souder dans le perçage de C9**



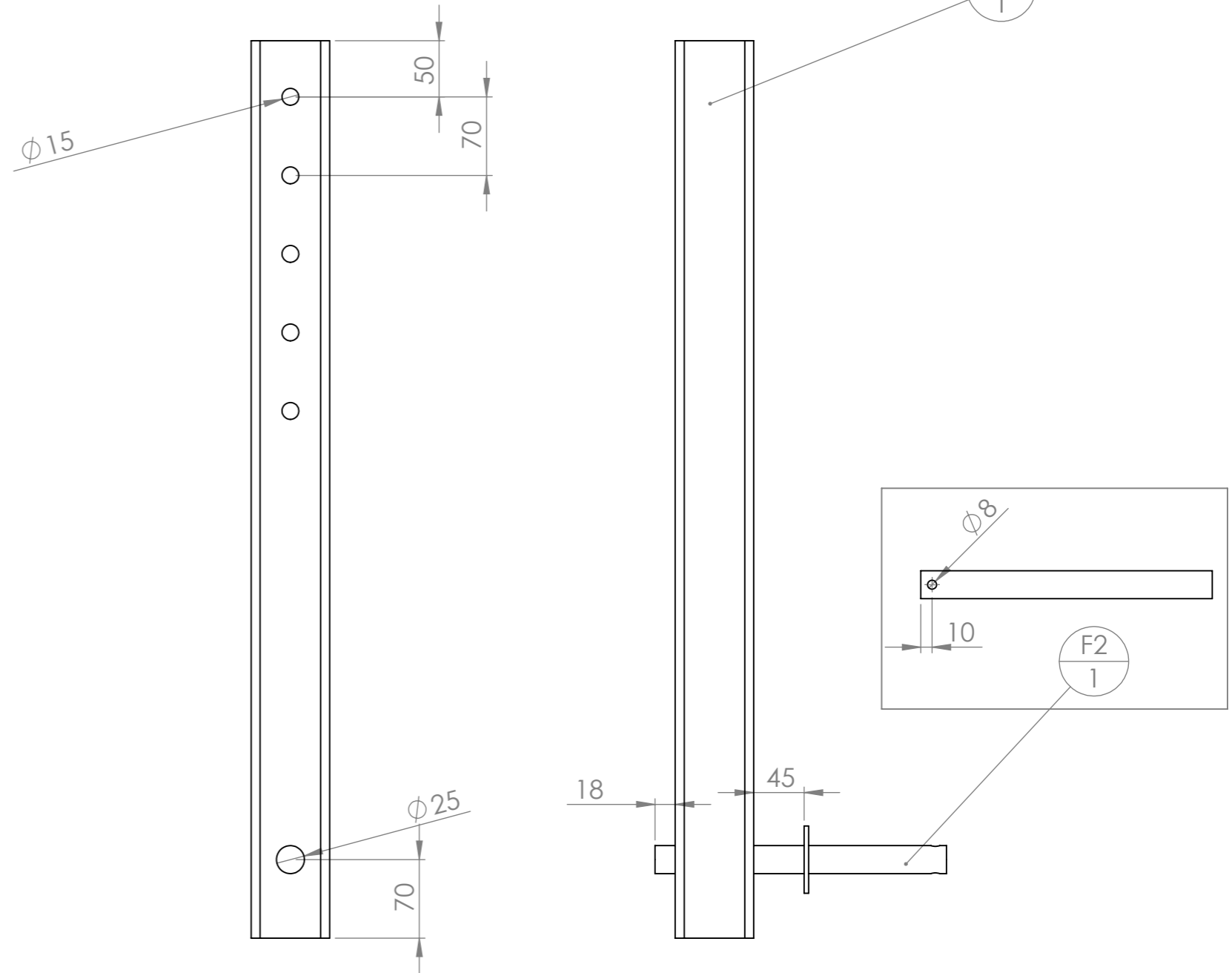
N°	Désignation	Longueur	Qté
C1	ébauche tubulaire Øint 41 Øext 60	54	2
C2	UPN 140 x 60	547	1
C3	étiré rond Ø40	188	1
C4	Fer plat 60 x 15	230	2
C5	fer plat 30 x 10	90	2
C7	Fer plat 60 x 15	80	2
C8	étiré rond Ø25	70	2
C9	Fer plat 50 x 10	100	2
C10	Vis hexagonale M14 x 40		2
C11	Fer plat 60 x 15	80	1
C12	Fer plat 50 x 10	140	1
C13	étiré rond Ø14	80	1
C14	UPN 140 x 60	485	1
axe	étiré rond Ø40	331	1
Ecrou	Ecrou M14 brut		2
Rotule_1	Rotule à souder Ø25		2
Rotule_2	rotule à souder Ø25 pièce n°2		2
roulement 6208	roulement 6208-2RS1		2
butee 51208	butée à bille 51208		1
moyeu	Moyeu roloflex		1
chicane	rondelle de protection roloflex		1
bague a souder	bague à souder roloflex		1



N°	Désignation	Longueur	Qté
E1	Fer plat 120 x 10	180	1
E2	tube carré 80 x 4	300	1



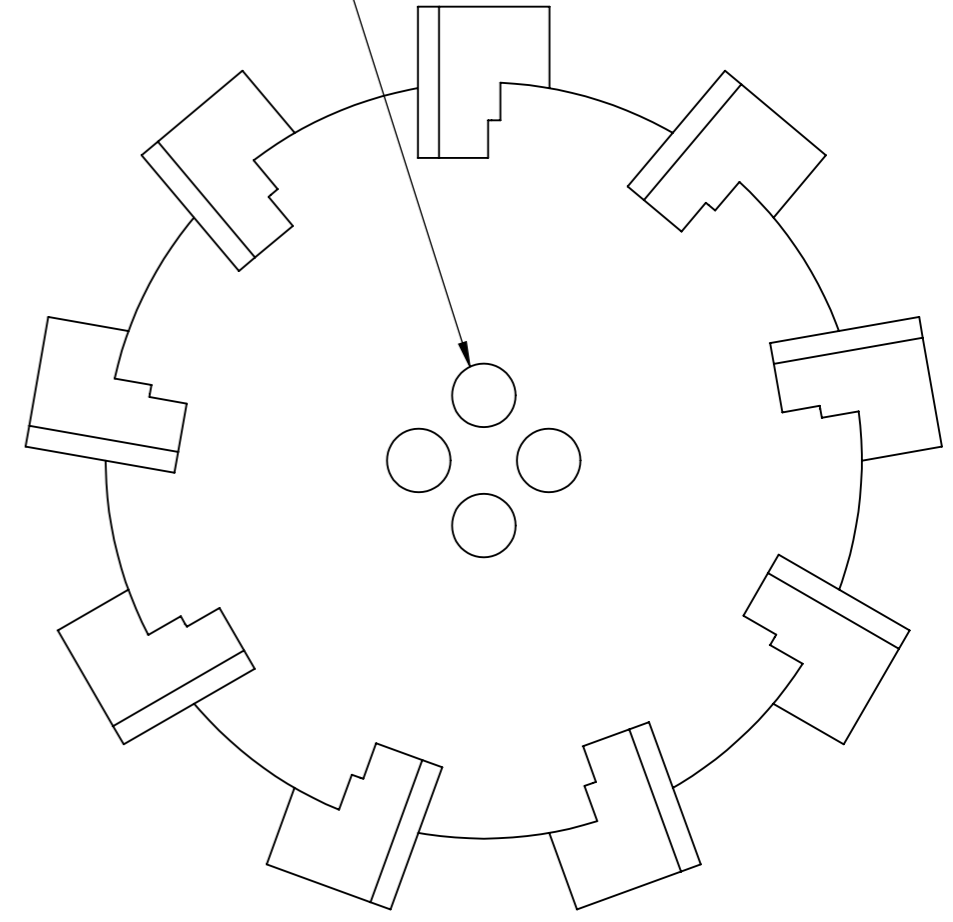
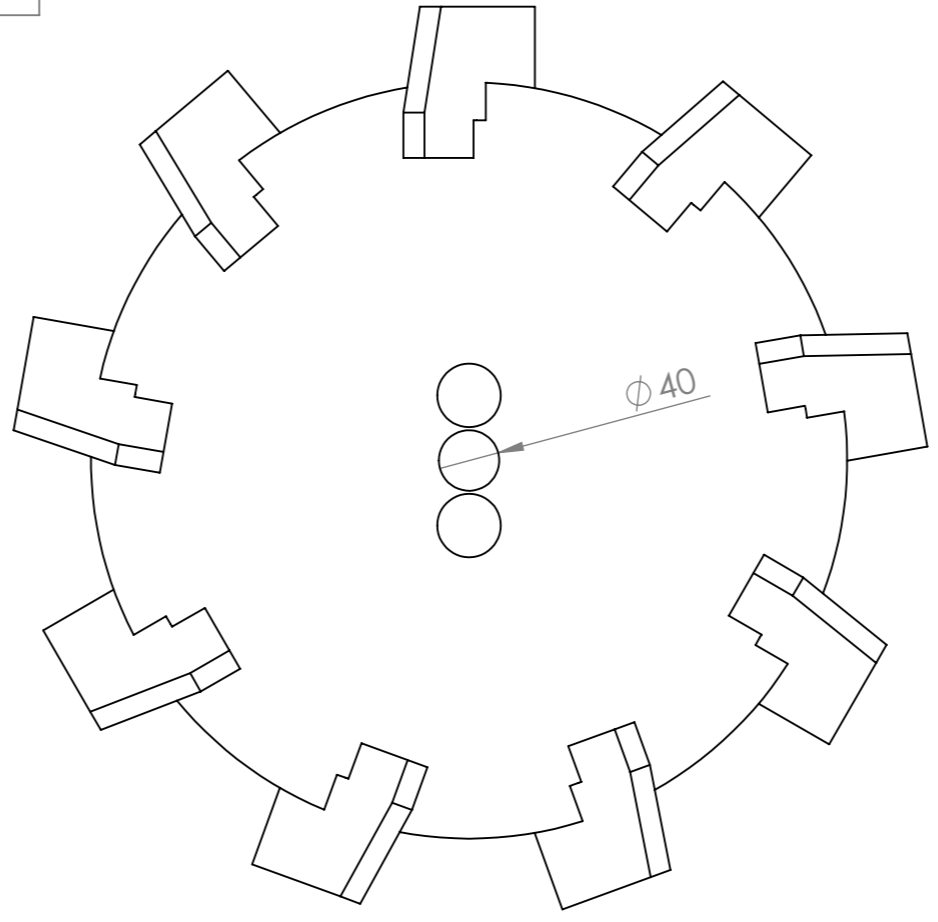
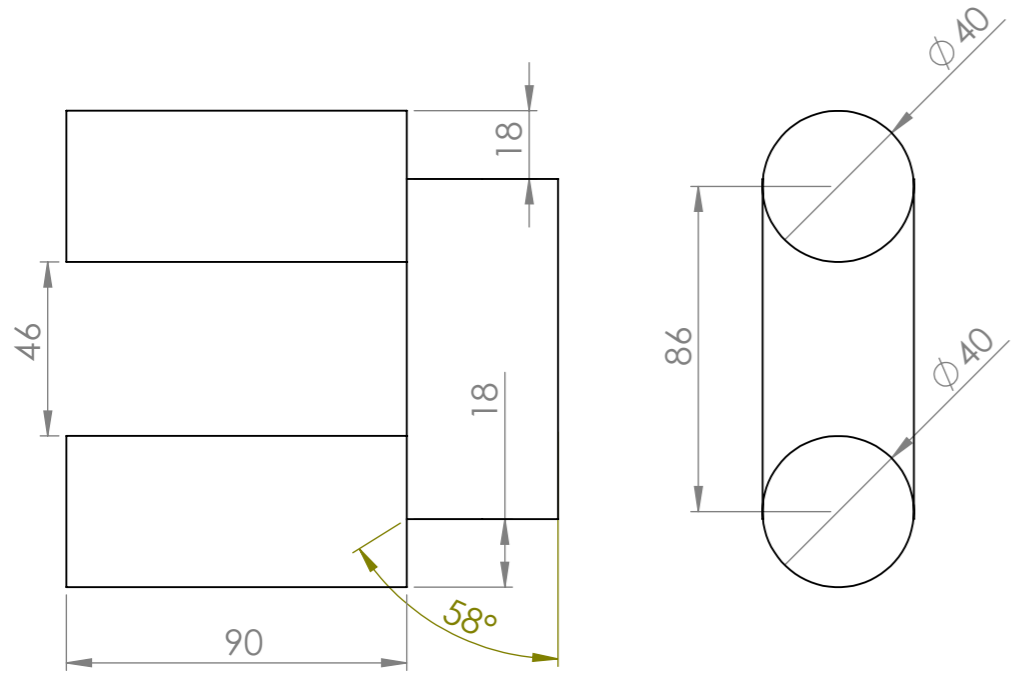
N°	Désignation	Longueur	Qté
Broche pliee 14 L170	étiré rond Ø14	170	1
Goupille beta	Goupille épingle d'axe 15x70 Ø4		1



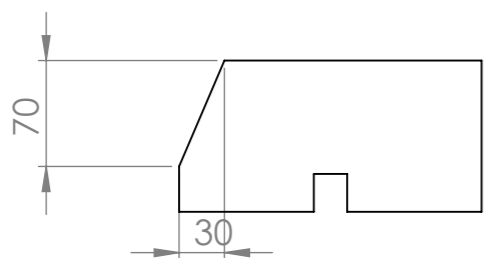
N°	Désignation	Longueur	Qté
F1	tube carré 70 x 4	800	1
F2	étiré rond Ø25	260	1
Rondelle	Rondelle Ø24 série LU		1



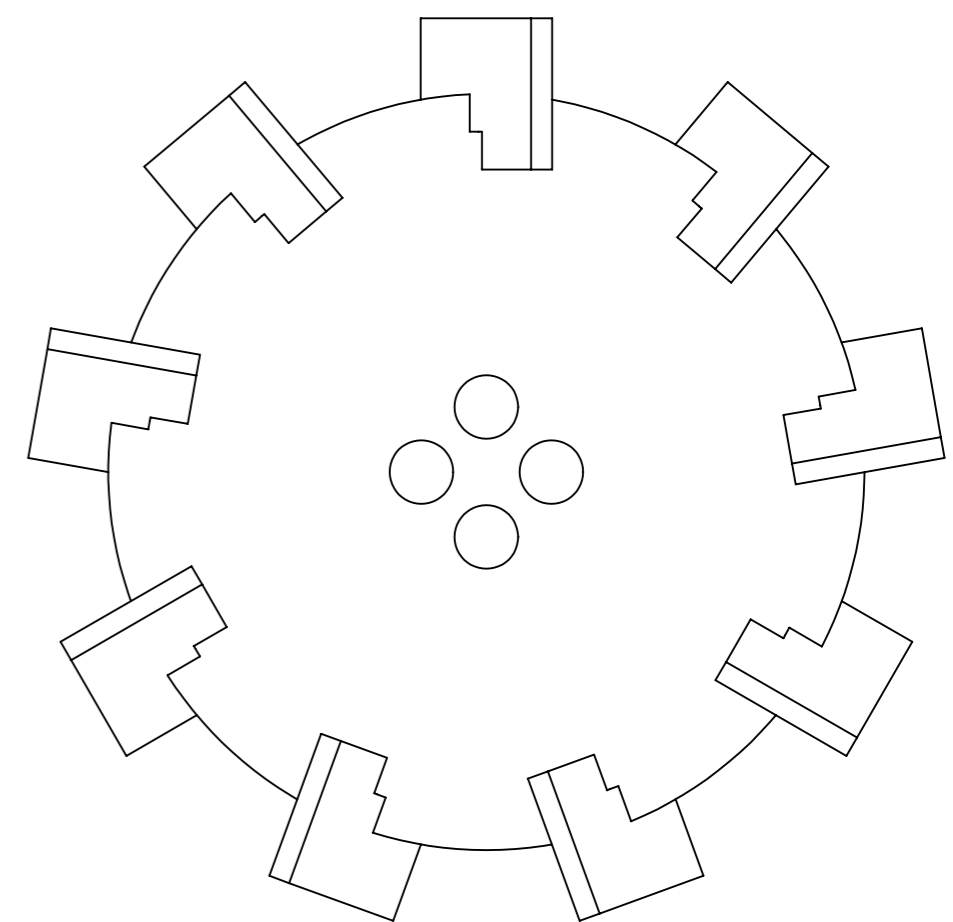
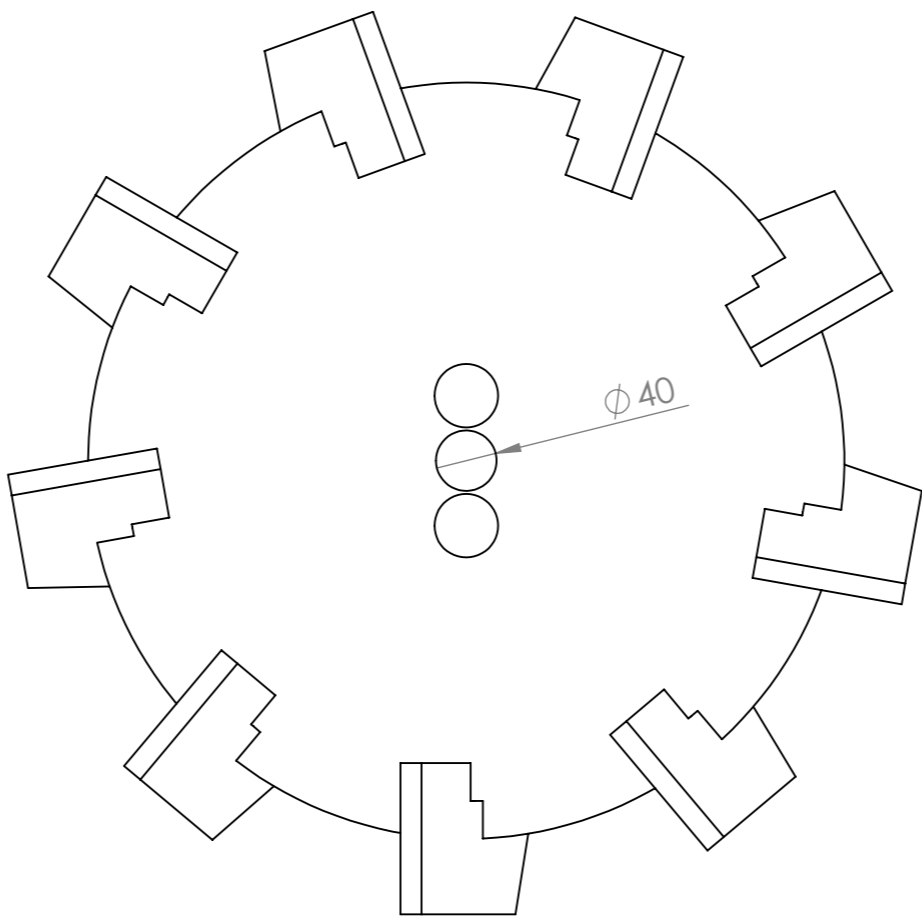
Trous de positionnement des cavaliers en étiré Ø40



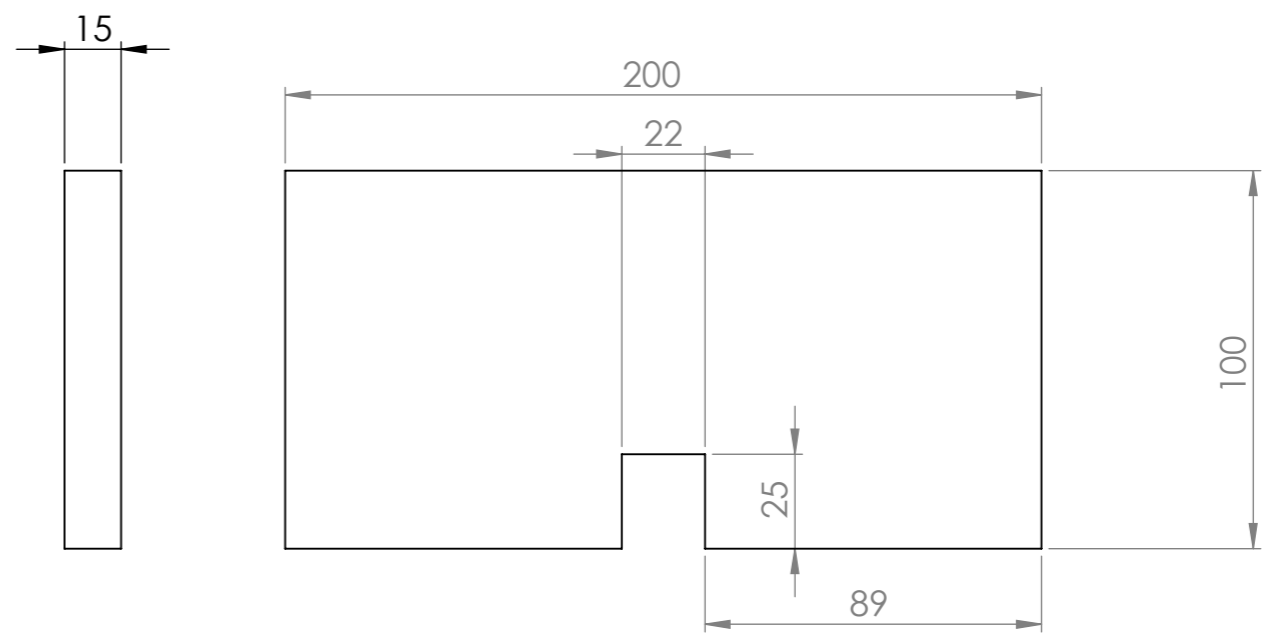
N°	Désignation	Longueur	Qté
G1	étiré rond Ø40 - section de 90mm		2
G2	étiré rond Ø40 - section de 90mm		1



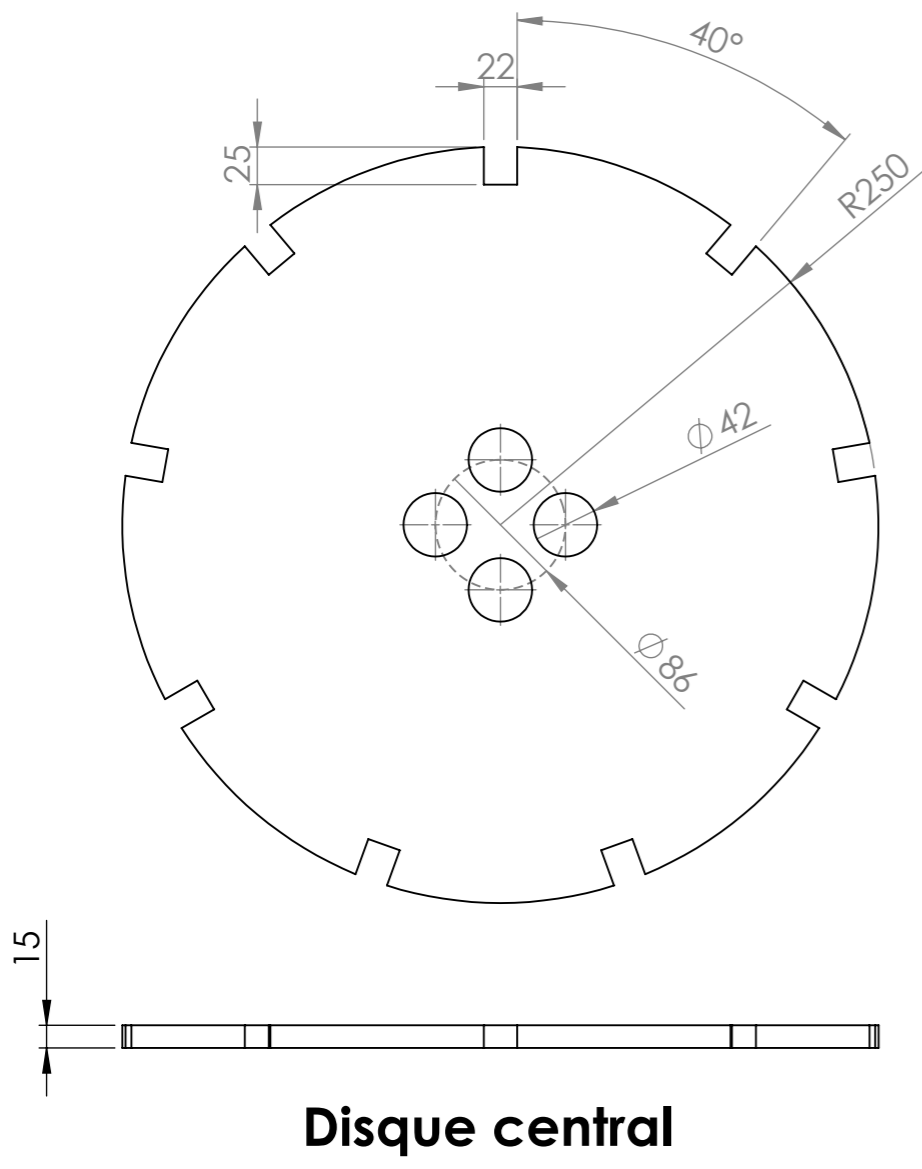
Couteau sur les 2 disques externes



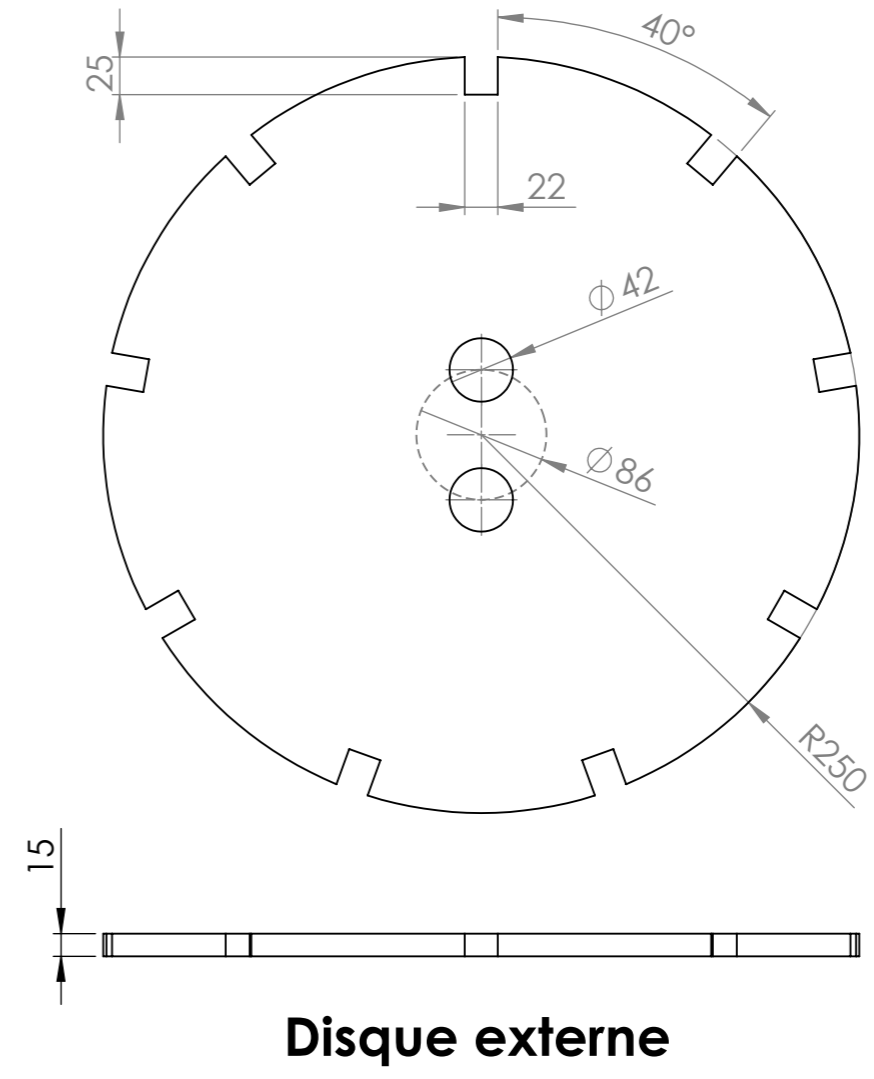
Outil	Roloflex				
Date	10/10/2019	Version	1.1		page n° 7 / 8
Feuille	Pièces découpées au laser				



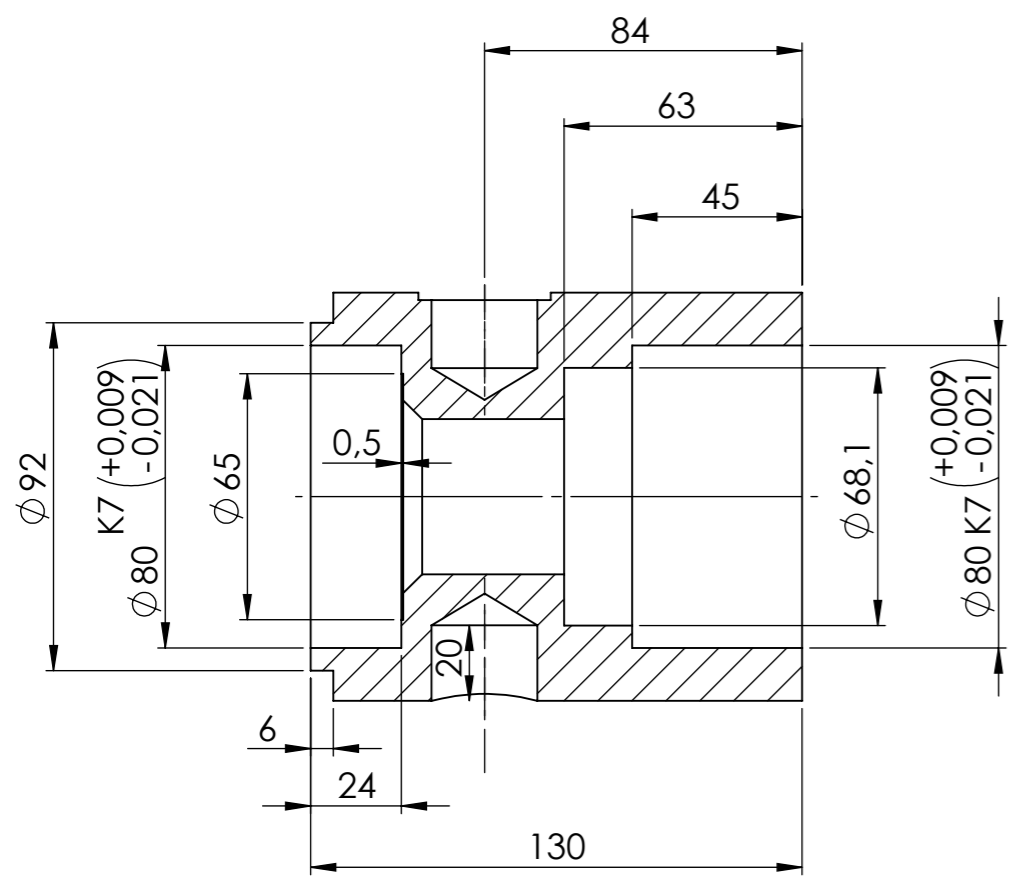
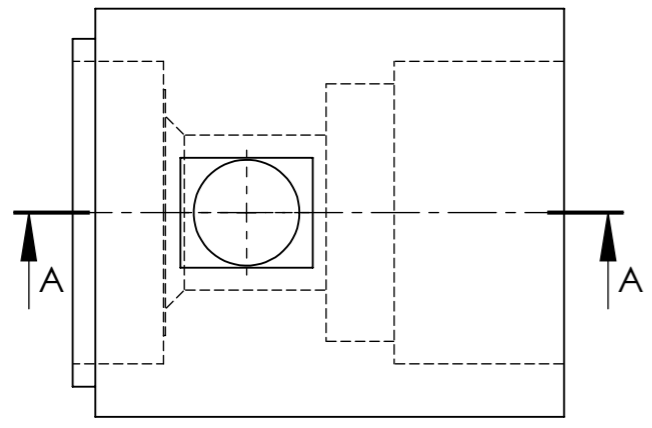
couteau intégral



Disque central

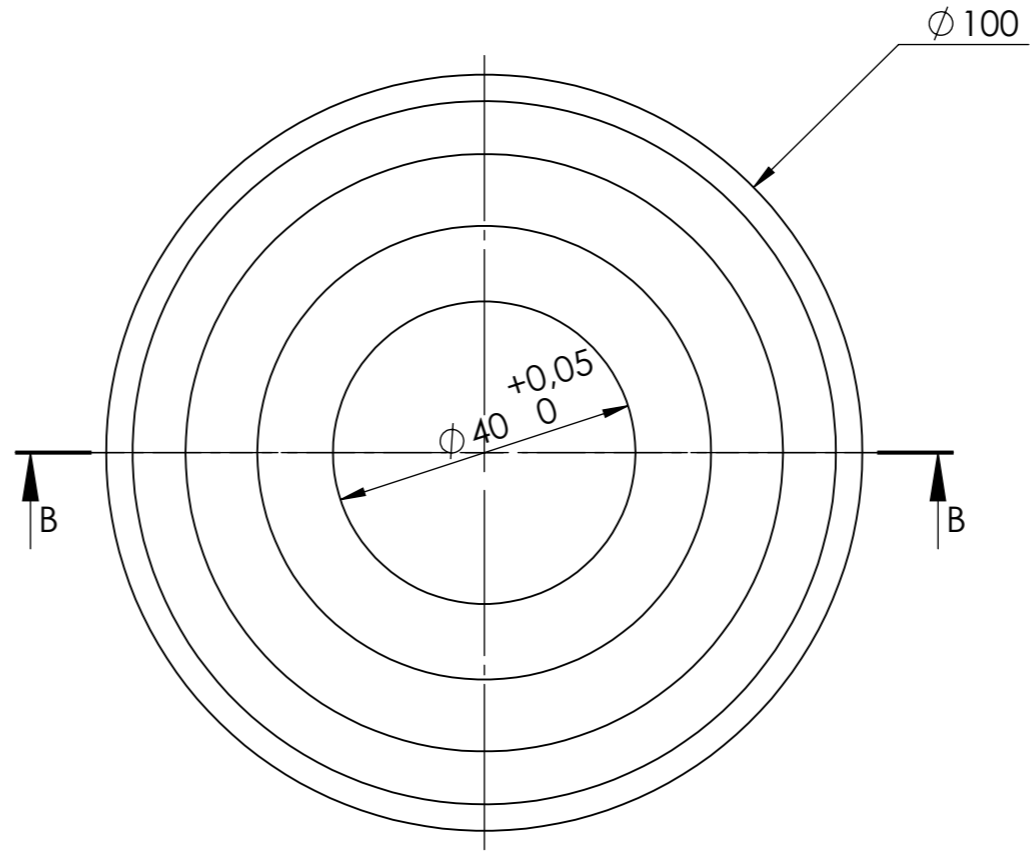
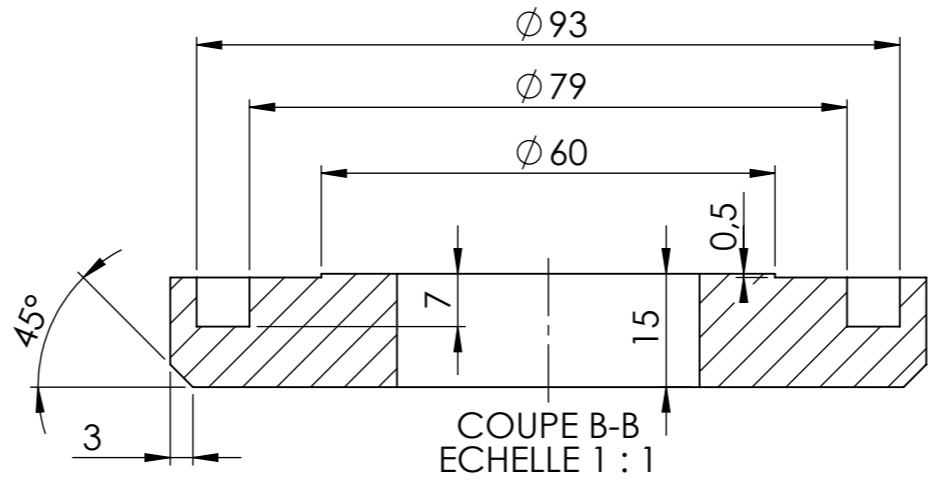


Disque externe

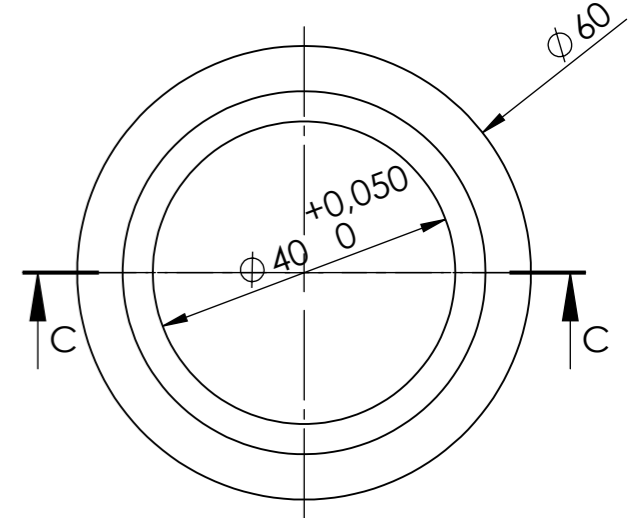
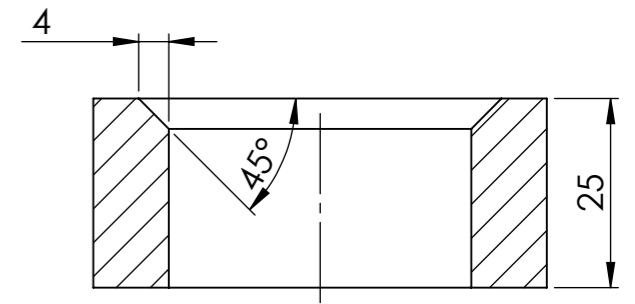


COUPE A-A

Moyeu



Chicane



Bague à souder