



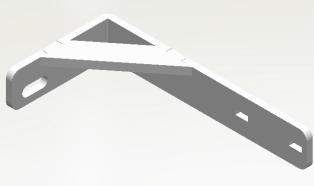
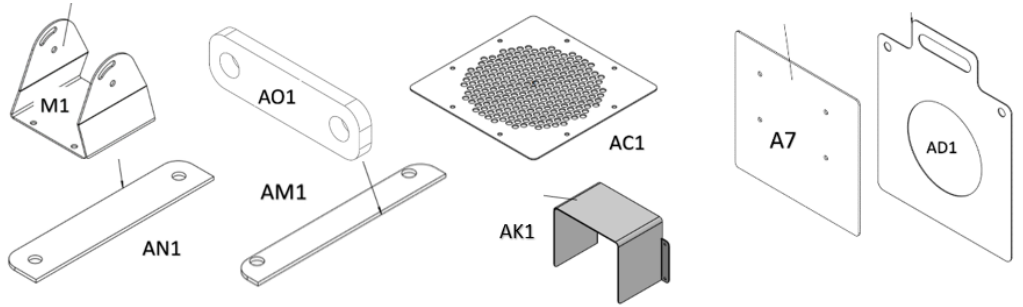
Assemblage de la colonne de tri densimétrique version 1

L'objectif de ce schéma est de faciliter le suivi de l'avancement de l'assemblage de la colonne de tri densimétrique de l'Atelier Paysan. Il suppose que les découpes et perçages sont faits en amont.

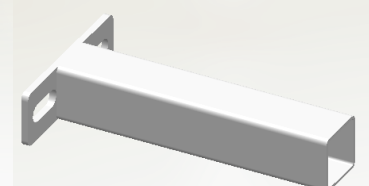
ATTENTION : ce schéma ne se substitue pas aux plans ni aux tutoriels, disponibles ici :

<https://l'atelierpaysan.org/Colonne-de-tri-densimetrique>

Peindre M1, AO1, AC1, A7, AN1, AM1, AK1, tous les AD1



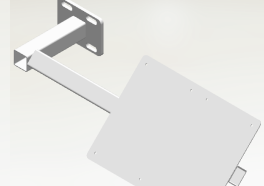
U



AE



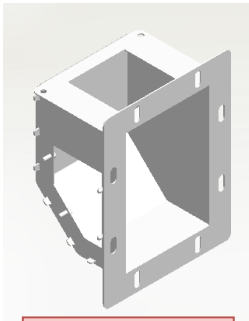
S



H

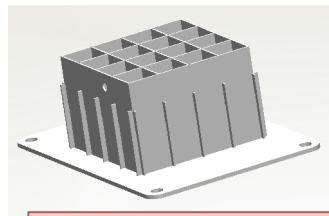


CA

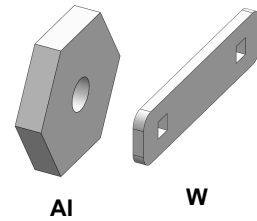


Souder C

Peinture

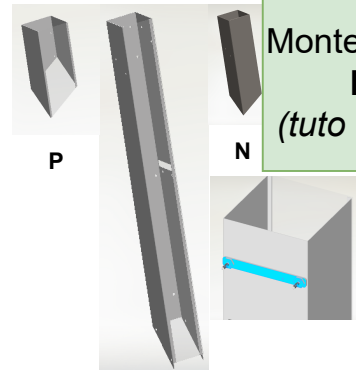


Souder laminaire D
!!! Soudure inox !!!
(tuto - partie 3.4)



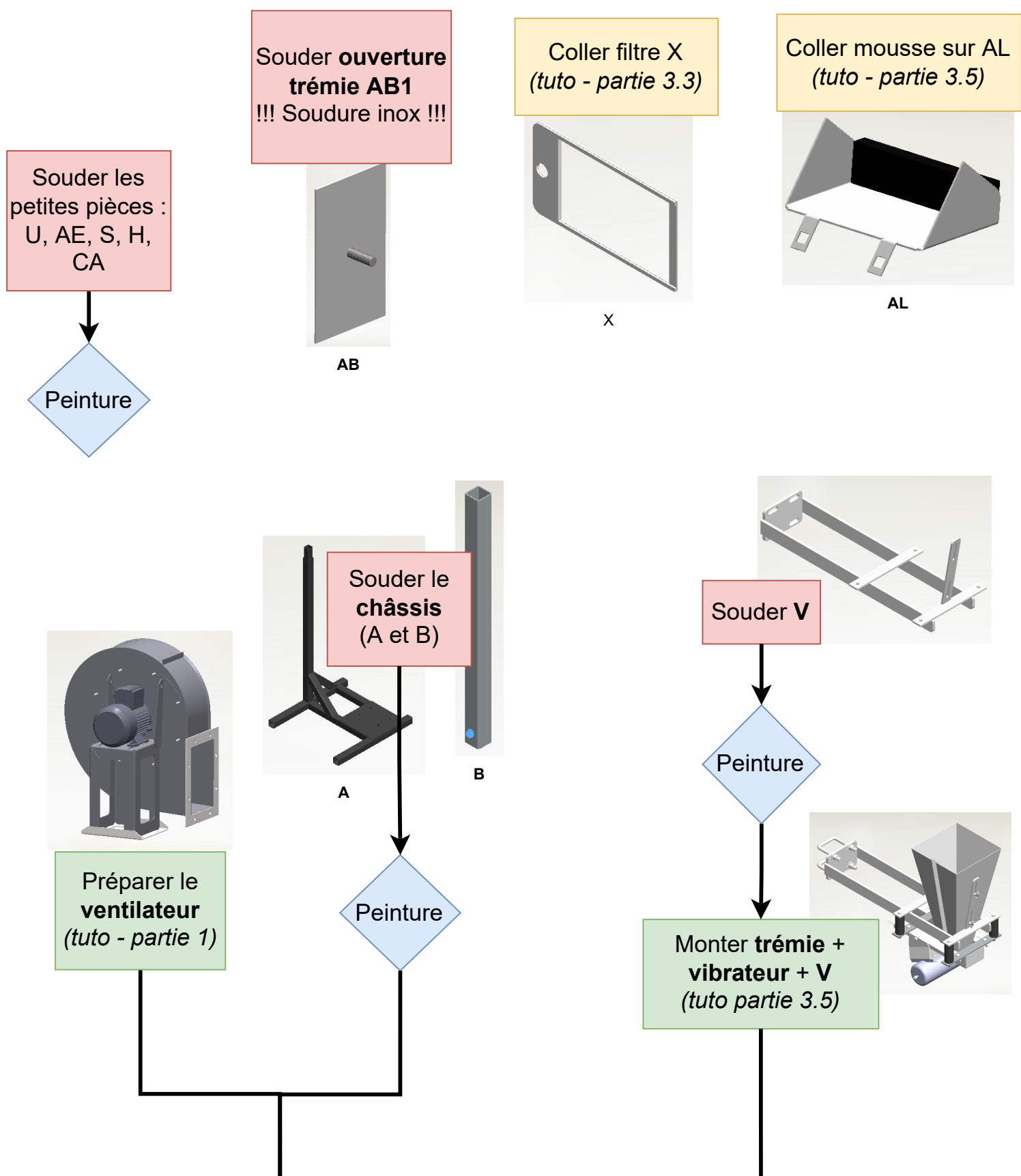
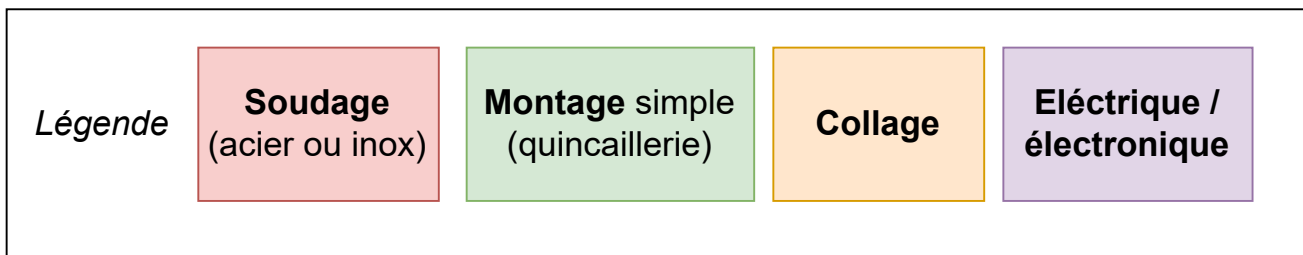
Peindre écrous AI, barrettes W

Tarauder AI

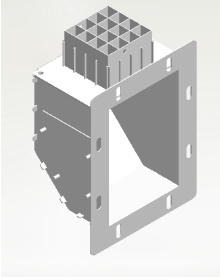


Monter les vis sur P, G, N
(tuto - partie 3.1)

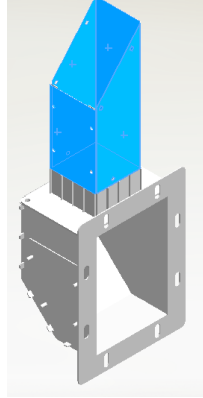
G



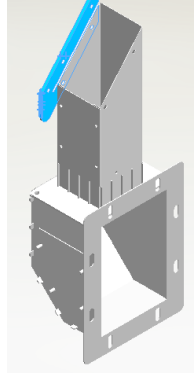
Monter **D sur C**
(tuto partie 4.1)



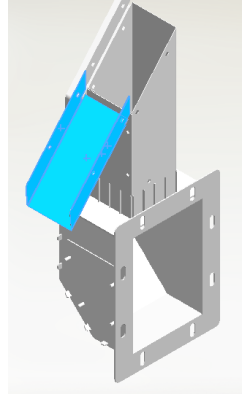
Monter **AF**
(tuto partie 4.2)



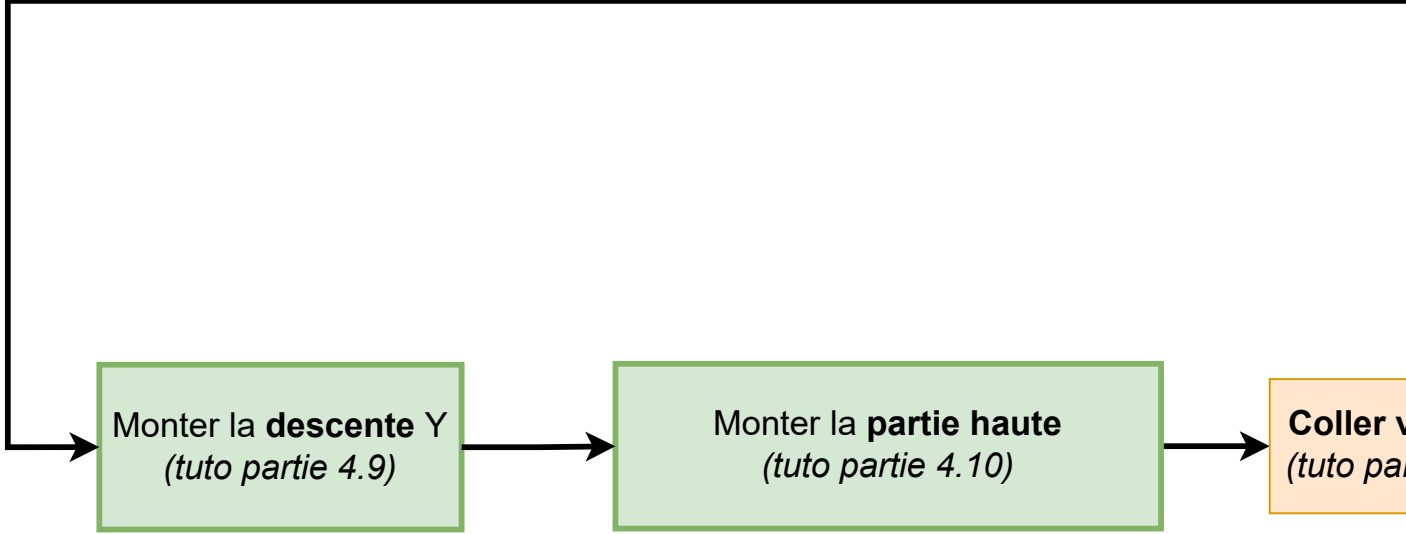
Monter **AH et AG**
(tuto partie 4.3)



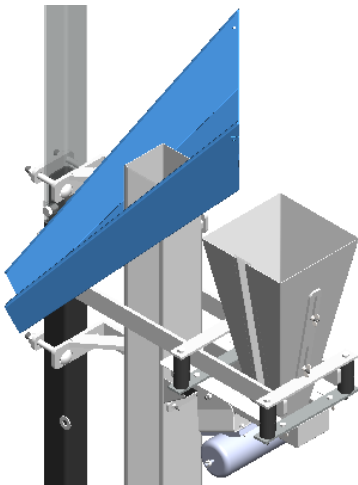
Monter **F**
(tuto partie 4.4)



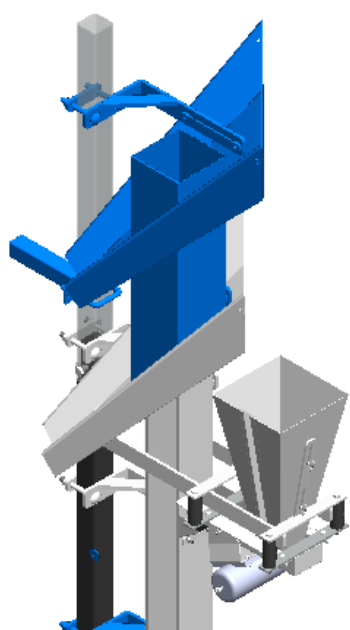
Mo
(tuto p



Monter la **descente Y**
(tuto partie 4.9)



Monter la **partie haute**
(tuto partie 4.10)



Coller v
(tuto pa

