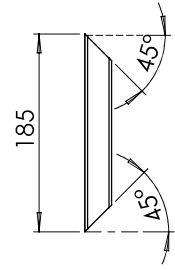
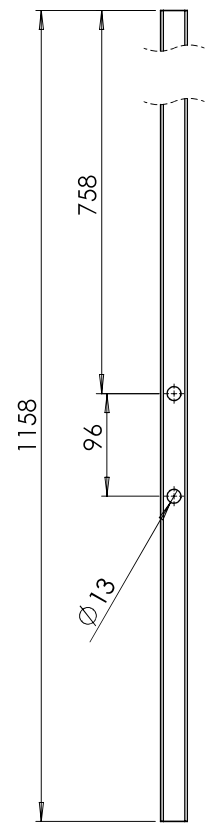


A25 / 2

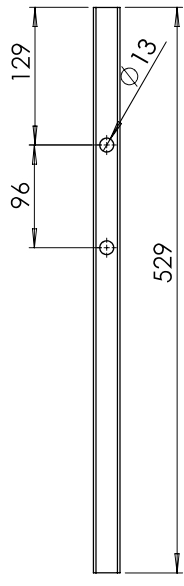


A28 / 2

Si le châssis est raccourci, il faudra recouper un des  $\frac{A28}{2}$  pour dégager les trous de fixation des paliers sur  $\frac{A24}{1}$ .



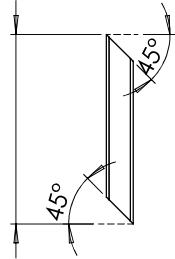
A21 / 1



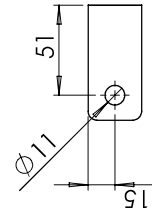
A24 / 1

177

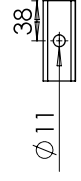
Cote à vérifier



A29 / 1



A33 / 2



A31 / 2