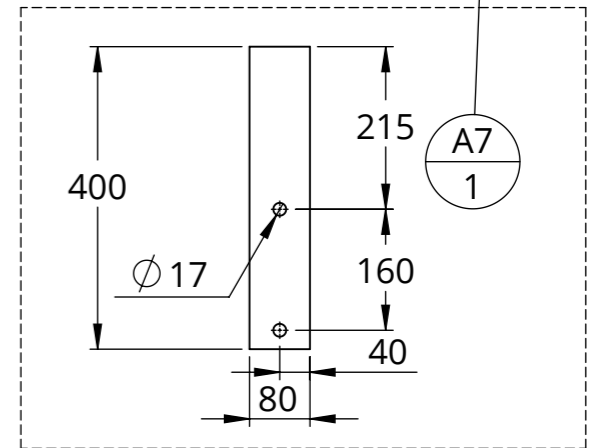
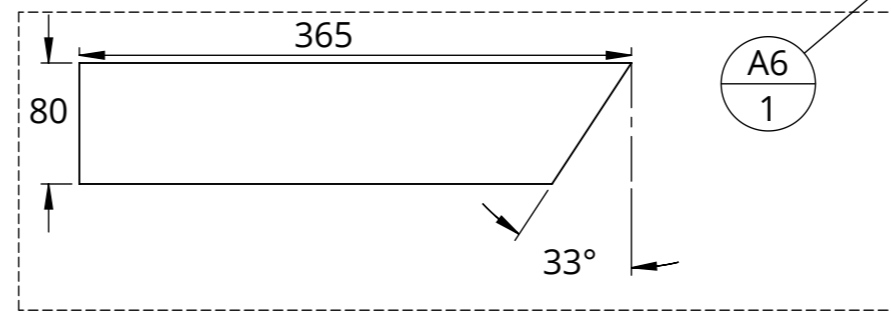
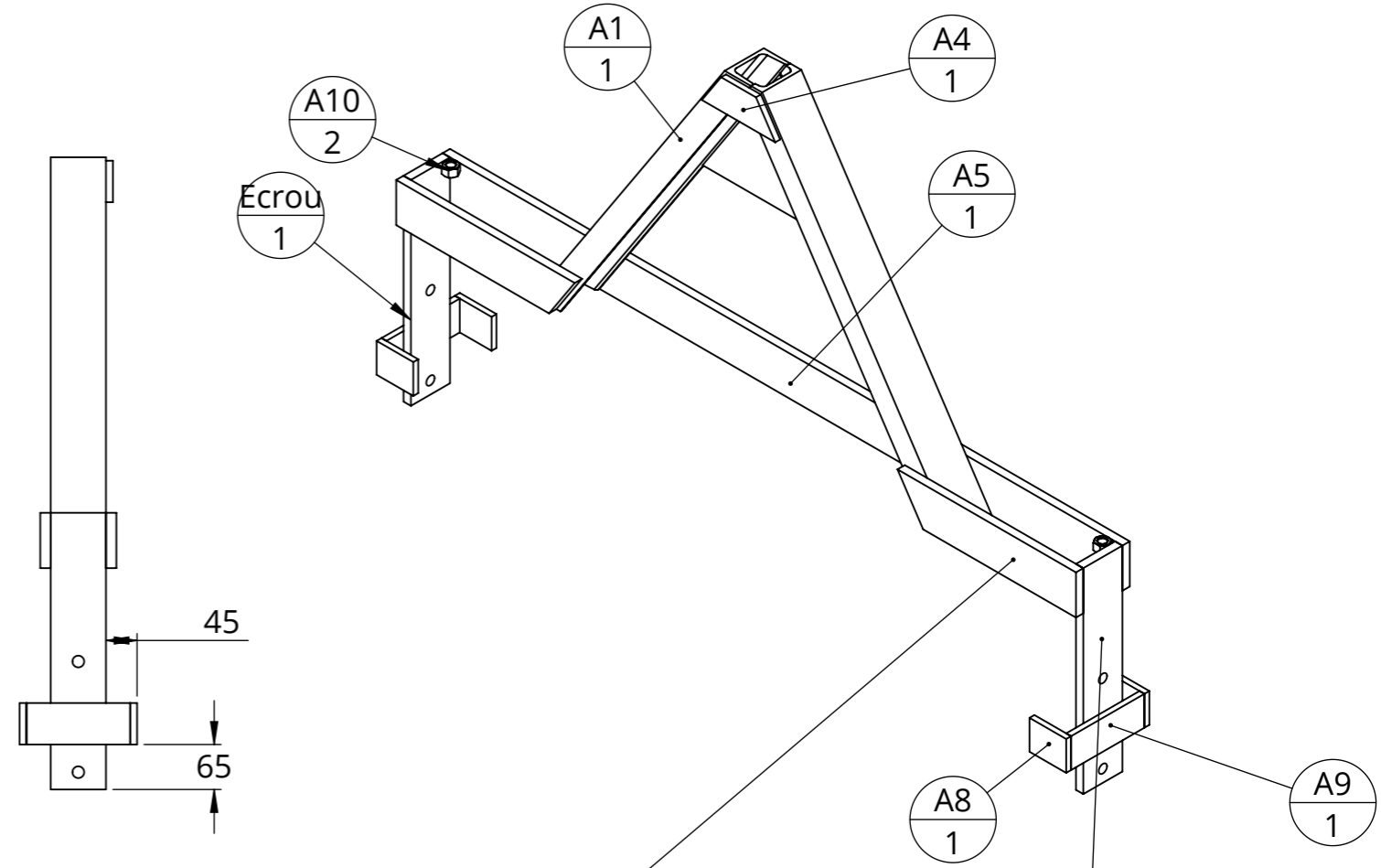
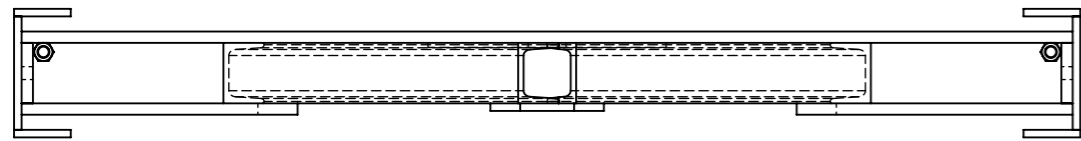
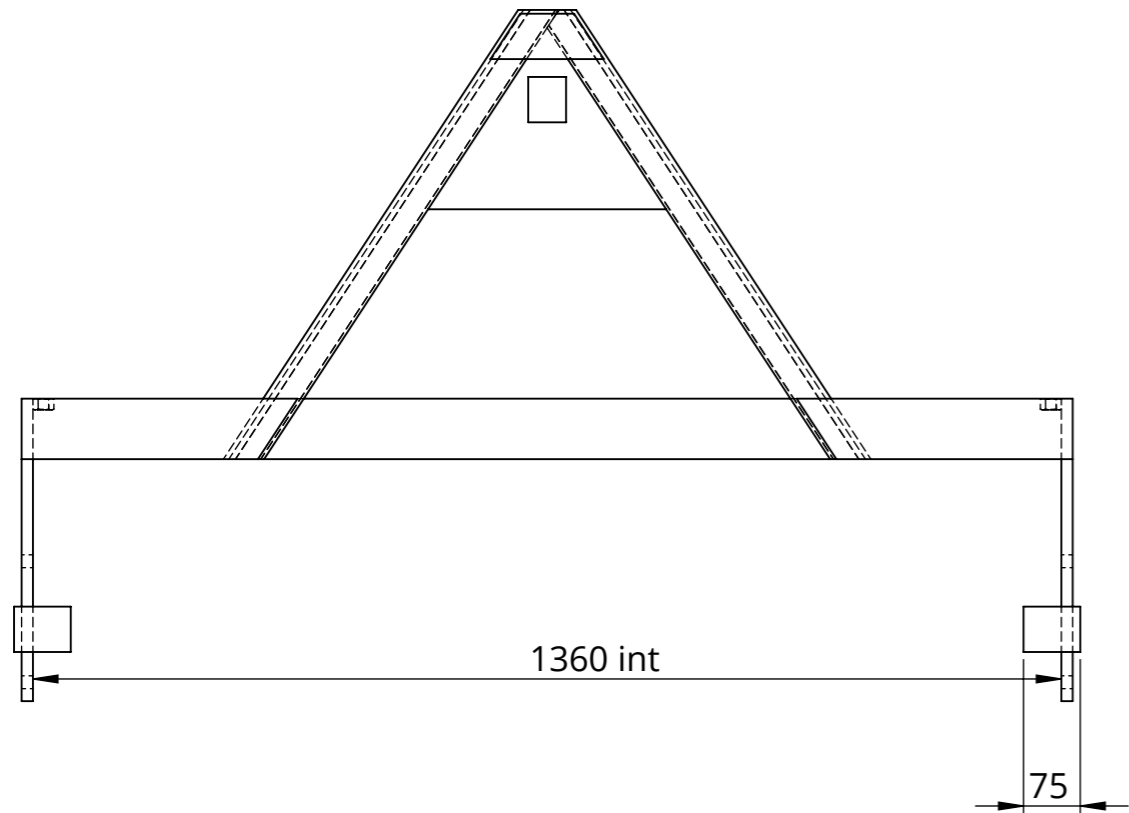


Outil	Rouleau fakir					L'atelier paysan
Date	08/07/2022	Version	2.1	page n°	6 / 19	
Pièce	A - chassis 1200			Qté	1	



repère	Désignation	ANGLE1	ANGLE2	p	LONGUEUR	Quantité
A5	fer plat 80 x 15	0.00	0.00		1390	1
A6	fer plat 80 x 15	0.00	33.27		365	2
A7	fer plat 80 x 15	0.00	0.00	2x Ø17 ;	400	2
A8	fer plat 80 x 15	0.00	0.00		75	4
A9	fer plat 80 x 15	0.00	0.00		150	2
A1	Poutrelle UPN 80x45	33.27°	33.27°		740	1
A2	UPN 80 x 45	33.27°	-		723	1
A3	Tôle triangle intérieure				SPE	1
A4	Fer plat 60 x 10	33.27°	33.27°		150	1
A10	Écrou M16 brut				STD	2